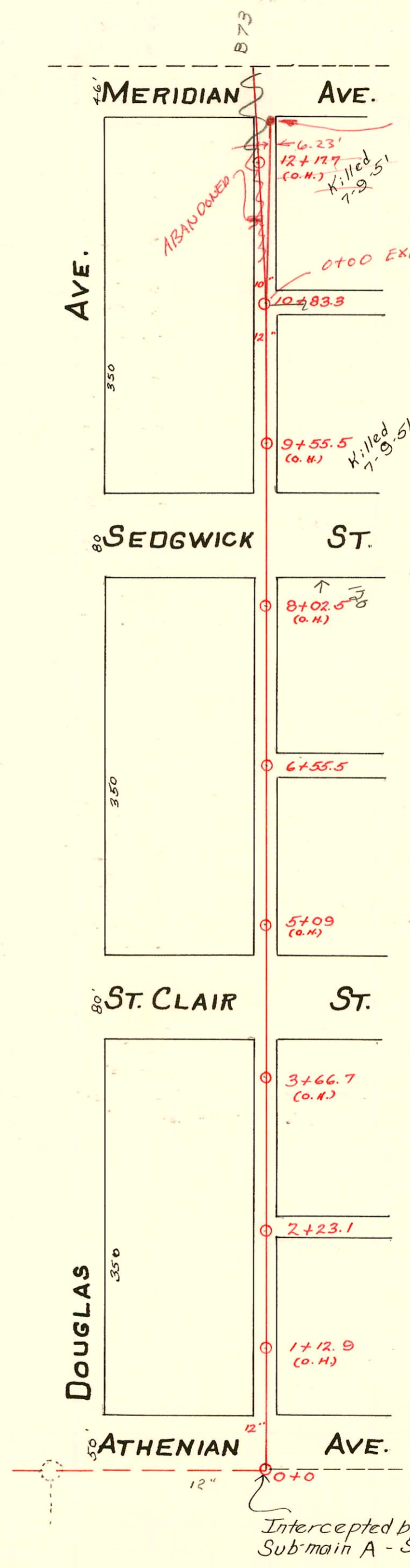


S.S. No. 13-1909

TRAP AREA



1+72.8 MH SHALLOW TRAP 'P'

S.S. Reconstruction in connection with Water Main Replacement in Meridian from Burton to Newell (B9059)

Proj No. 468-B2803  
Index No. 621021  
Built By Wildcat Const.  
Booked per As Built Plan 3-17-99

N →

Intercepted by Lat. 2-Sub-main A - S.S. No. 21.

Repl.  
Sub 2004-01929 7/15/04 119 W Athenian - Mies Const.  
SWR 2006-02754 - full repl. 4" sch 40 PVC, 105' w/2 MH, (3) 24", (1) 45", 4" trap, 10' 4" vlv, 4" clo - Ark. valley, 11/2/00

CONSTRUCTION RECORD						SERVICE RECORD						
STATION	ELEVATION		Depth	MANHOLE	4-INCH "Y" BRANCHES		No. of Permit		House Number		DATE OF PERMITS	
	Ground	Grade			North West	South East	North West	South East	North West	South East	North West	South East
					7.9.51	12+56	15	16758	2436 W Douglas		3-12-63	
				(Killed)	12+31							
				12+17.7 (o.H.)								
12	115.57	109.15	6.42		12+05				2434 W Douglas		5-28-27	
					11+79		#441					
					11+54							
11	116.07	109.05	7.02		11+28		#728		2442 W Douglas		3-7-38	
					10+93.5							
				10+83.3								
					10+68		#1707		2424 W Douglas		12-6-29	
					10+42.5		#113				3-22-15	
10	114.47	108.95	5.52		10+17							
					9+86.5							
					9+59							
					9+51		#77		2406 W Douglas		1-30-28	
9	113.77	108.85	4.92		9+31		#76		2402 W Douglas		1-30-28	
					8+21							
8	113.67	108.75	4.92		7+98		#221		?		2-15-23	
					7+73		#995		?		6-13-19	
					7+47.5							
					7+21.5							
7	113.57	108.65	4.92		6+96		#732		2320 W Douglas		7-1-49	
					6+60.5		#774		2316 W Douglas		9-13-26	
				6+55.5								
					6+42.5		#930				8-1-22	
6	113.47	108.55	4.92		6+17.5							
					5+91.2							
					5+63.5							
					5+38		#212				5-10-12	
					5+12							
5	113.99	108.45	5.64		4+87							
4	113.78	108.35	5.43		3+82							
					3+65		#360				5-8-20	
					3+41.5		#1423				12-22-19	
3	113.98	108.25	5.73		3+16.5							
					2+90.5							
					2+65.5		#37				1-20-20	
					2+42		#36				1-20-20	
				2+23.1								
2	113.68	108.15	5.53		2+10.5							
					1+85		#1259				10-3-19	
					1+59							
					1+33.5		#929				5-21-19	
					1+11							
1	111.58	108.05	3.53		1+01.5		#870				4-29-19	
0	113.68	107.95	5.73	0+0 - same as M.H. 26+96.6 on Page 71								
				↳ Lat. 2, Sub-main "A" S.S. No. 21 intercepts No. 13 here.								
S.S. - Reconst. in conn/w Water Main Replacement in Meridian												
	0+00	115.13	109.03	6.1	0+00							
	1+00	115.09	109.14	6.0								
		114.68	109.22		1+72.8							
Repair- 2003-00958-411403-120 N Sedgwick - Roto Rooter - City wye repair - 4" Pexco 90' W of MH 6+55.5 (7+45.5) 1/2" 2, ITWIN CO, Repair @ Main, shallow, 4" 40 PVC, alley cut												
2002-01803 2326 W Douglas - 612802 Roto Rooter - 2 Fernco, 1H45, ITWIN CO, 4" SCH40 (CORISER ONLY)												
97-60397 478-97 2206 W Douglas - Northern Pipeline												

- #522 - Tap - 112 N. St. Clair - 5-16-28
- #379 - Tap - 122 N. Meridian - 9-23-36 - John Riedel
- #1397 - Private line - 2320 1/2 W. Douglas - 8-26-49 - Wichita P189 Co.
- #1265 - 134 N. Sedgwick - 12-3-28
- #628 - 126 N. Sedgwick - 7-25-27
- #651 - 130 N. Sedgwick - 5-1-23
- #569 - 151 St. Clair - 4-19-23
- #1268 - 9-29-22
- #426 - 5-1-22
- #1285 - 12-28-21 - 40' N. of 6+55.5 - Tap.
- #829 - 11-8-20 - Tap 120' N. of M.H. 6+55.5
- #488 - 6-9-21 - Tap.
- #772 - 8-24-21 - 100' S. of M.H. in Grand
- #115 - 2-17-22 - 126 N. Sedgwick
- #1761 - 11-30-23 - 157 N. St. Clair
- #370 - 5-5-26 - 158 N. Sedgwick
- #62 - 2-25-29 - 140 N. Sedgwick - 36' N.
- #63 - 2-25-29 - 144 N. Sedgwick - 61' N.
- #16757 - 2436 W Douglas - Seal off - 3-12-63 Justice P189