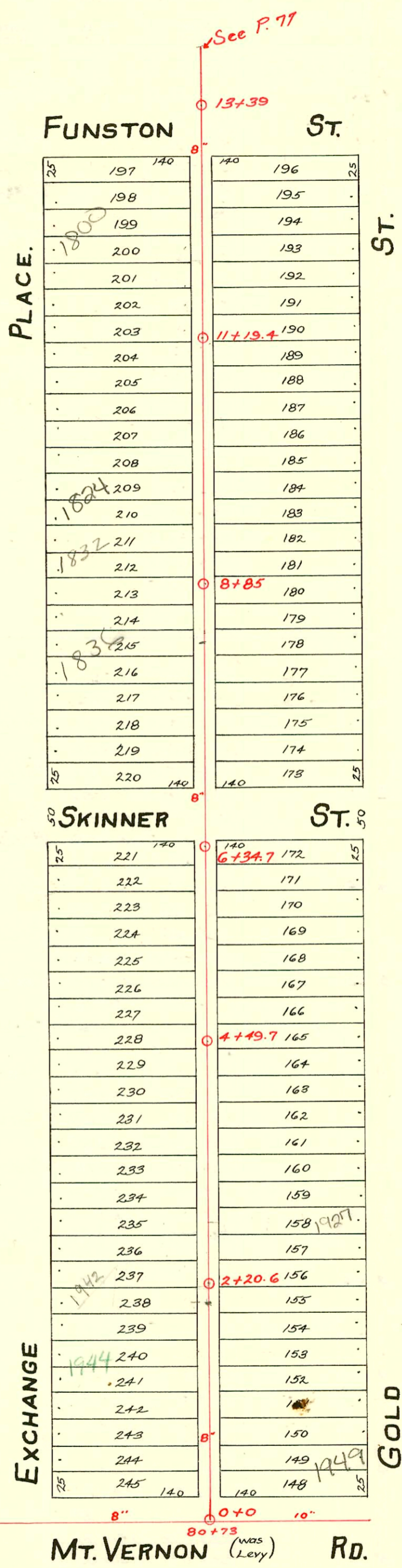


LAT. 17-DIST. C-S.S. No. 20  
 CHAPIN & FOSTER-1928.



2000-02239-10/12/00-1836 Exchange-Kansas Ditch-4" SCH40-Repl all but lower 4' of sewer-TWIN CO, 1H45-No alley cut  
 2001-02437-10/1/01-1607 S Gold-Roto-Pipe Burst Replacement-4" PE SPRIT-Wye Repair 25.9'W of DE MH (+28(+02.1))  
 Replaced entire line-4" two way co @ house, 2H22, 1V22  
 2003-00340-2/6/03-1949 S Gold-Clearwater EX-4" 40 PVC-6" wye repaired by city-TWIN CO 14' from house, replaced  
 all but upper 14', 1H45, dirt alley cut

CONSTRUCTION RECORD

SERVICE RECORD

STATION	ELEVATION		Depth	MANHOLE	4-INCH "Y" BRANCHES		No. of Permit		House Number		DATE OF PERMITS	
	Ground	Grade			North West	South East	North West	South East	North West	South East	North West	South East
79	99.02	96.89	2.13									
80	98.88	96.99	1.89									
	100.48	97.07	3.41	80+73								
0+0	100.45	97.20	3.25	0+0	0+24	0+21.5	#3135	2003-240	618 W. Levy	1949 R	11-7-52	
					0+49.5	0+47	#418	#1046	1948 Exchange	Gold	8-30-49	
					0+75.5	0+73	#1892		1946 Exchange	Gold	7-6-49	
1+0	100.55	97.30	3.25		1+01	0+98.5		#716	1945	Gold		7-15-30
					1+27.5	1+25						
					1+52.5	1+50	260025	#272	1944 Exchange	1943 Gold	2-22-77	3-7-52
					1+79.5	1+77						
2+0	101.15	97.40	3.75		2+04	2+01.5	#1155		1940 Exchange		5-26-50	
				2+20.6	2+29.5	2+27		#116	1931 Gold			12-12-33
					2+55	2+52.5	#1157	#1190	1938 Exchange	1929 Gold	5-26-50	6-17-86
					2+80.5	2+78		#366	1927 Gold			8-30-29
					2+80.5	2+78			1932 Exchange			10-14-88
3+0	100.05	97.50	2.55		3+06	3+03.5	#3978				3-1-51	4-15-30
					3+32	3+29.5						
					3+57.5	3+55						
					3+83.5	3+81	#121	#244	1918 Exchange	1923 Gold	3-5-56	6-30-26
4+0	100.05	97.60	2.45		4+09.5	4+07		#1275		1921 Gold		9-12-29
				4+49.7	4+35.5	4+33						
					4+60.5	4+58	#146	#1079	1912 Exchange	1913 Gold	3-3-30	8-16-29
					4+86	4+83.5						
5+0	100.65	97.70	2.95		5+11.5	5+09	#1199	#954	1910 Exchange	1909 Gold	6-5-50	10-16-30
					5+35	5+32.5						
					5+60	5+57.5	#1701	#2001-03100	1908 Exchange	1905 Gold	7-21-50	10-18-50
					5+85	5+82.5	#2390		623 W Skinner		9-15-50	
6+0	101.55	97.80	3.75	5'S. of St. Skinner 6+34.7	6+12	6+09.5	#1140			1901 Gold		12-19-46
					7+01	6+98.5	#1886		1848 Exchange		7-16-52	
7+0	101.28	97.90	3.38		7+26	7+23.5		#424		1847 Gold		4-28-30
					7+52.5	7+50						
					7+78	7+75.5	#4059	#770	1838 Exchange	1841 Gold	2-6-53	8-1-30
8+0	100.68	98.0	2.68		8+02.5	8+0						
					8+29.5	8+27	#2305	#841	1836 R Exchange	1839 Gold	10-12-00	7-13-49
					8+54.5	8+52	#1665		1832 Exchange		11-2-49	9-8-69
				8+85	8+80	8+77.5					2-25-48	
9+0	100.08	98.10	1.98		9+07	9+04.5						
					9+31.5	9+29	#1744	#1044	1828 Exchange	1831 Gold	9-21-49	2-12-42
					9+57.5	9+55	#2152		1824 R Exchange	1827 Gold	6-27-03	8-31-50
					9+84	9+81.5		#1196				9-3-29
10+0	101.98	98.20	3.78		10+09	10+06.5						
					10+34.5	10+32						
					10+57.5	10+55	#3489		1822 Exchange		3-1-50	
					10+84	10+81.5		#1197		1821 Gold		9-3-29
11+0	102.48	98.30	4.18		11+10	11+07.5	#2017	#3773	1814 Exchange	1817 Gold	7-29-52	7-5-41
				11+19.4	11+37	11+34.5						
					11+62	11+59.5	#437	#2359	1812 Exchange	1811 Gold	8-18-31	8-30-52
					11+87	11+84.5		#1577		1805 Gold		11-15-66
					12+12	12+09.5						11-15-66
					12+37	12+34.5	#4123	#1577	1800 Exchange		8-23-41	11-1-29
13+0	102.08	98.50	3.58	13+39	12+66	12+63		#571		607 W. Furston		5-21-49
								#506		1801 Gold		5-16-30
Lines in Alley S. of Harry, Gold	0+0	104.55	99.68	4.87	0+0	0+13		#1858	611 W. Harry		11-13-59	
						0+39.5		#3278			4-5-41	
St. West. Plat P. 77	1+0	105.15	99.78	5.37		0+61.5	0+64		#1071	1617 Gold		8-15-29
Line East	1+28	105.05	99.81	5.24	1+28	1+15.5		#42244				11-13-73
Line West	0+0	104.55	99.68	4.87	0+0	0+25						
						0+52	0+54.5					
					1+05	1+05	0+80					
Line in Alley N. of Osie, W. from M. H. 21+69.2 on Line in Alley W. of Gold.	0+0	104.21	99.37	4.84	0+0	0+17.5		2001-02992	1601 S Gold St		11-26-01	
						0+42.5	0+68		#851	620 W. Osie		7-19-43
						0+92.5	0+95		#4560	624 W. Osie		5-2-55
						1+19.5	1+46		#177	628 W. Osie		2-23-52
						1+72	1+94					
2+0	103.21	99.57	3.64									
2+06.7	103.21	99.58	3.63	2+06.7								

Plat Page 77.

#336 Tap - 2001 Gold - 7-7-37 - H.J. Geile - #10.00 Special Fee Paid  
 #1809 Tap - 1927 Gold - 11-9-44 - W.A. Zahourek.  
 #3697 Tap at 1+00 Gold - 1-15-51 - Kendall Pibq. 112201 Wichita Exc - 510' from main + 23' W of MH  
 #5082 Tap - 1825 Gold - 6-25-51 - J.O. McDonald  
 #111 Tap - 1902 Exchange - 2-18-52 - E.B. Brinnon  
 #6373 Tap - 1830 Exchange - 9-8-53 - Roy Farrell  
 C 56794 L.O. Don Colman - 1944 Exchange - 7-20-76 (14566)  
 #3935 1808-10 Exchange 8-18-81 (Colman) (11462.0 Wye) (42.6 N of MH)