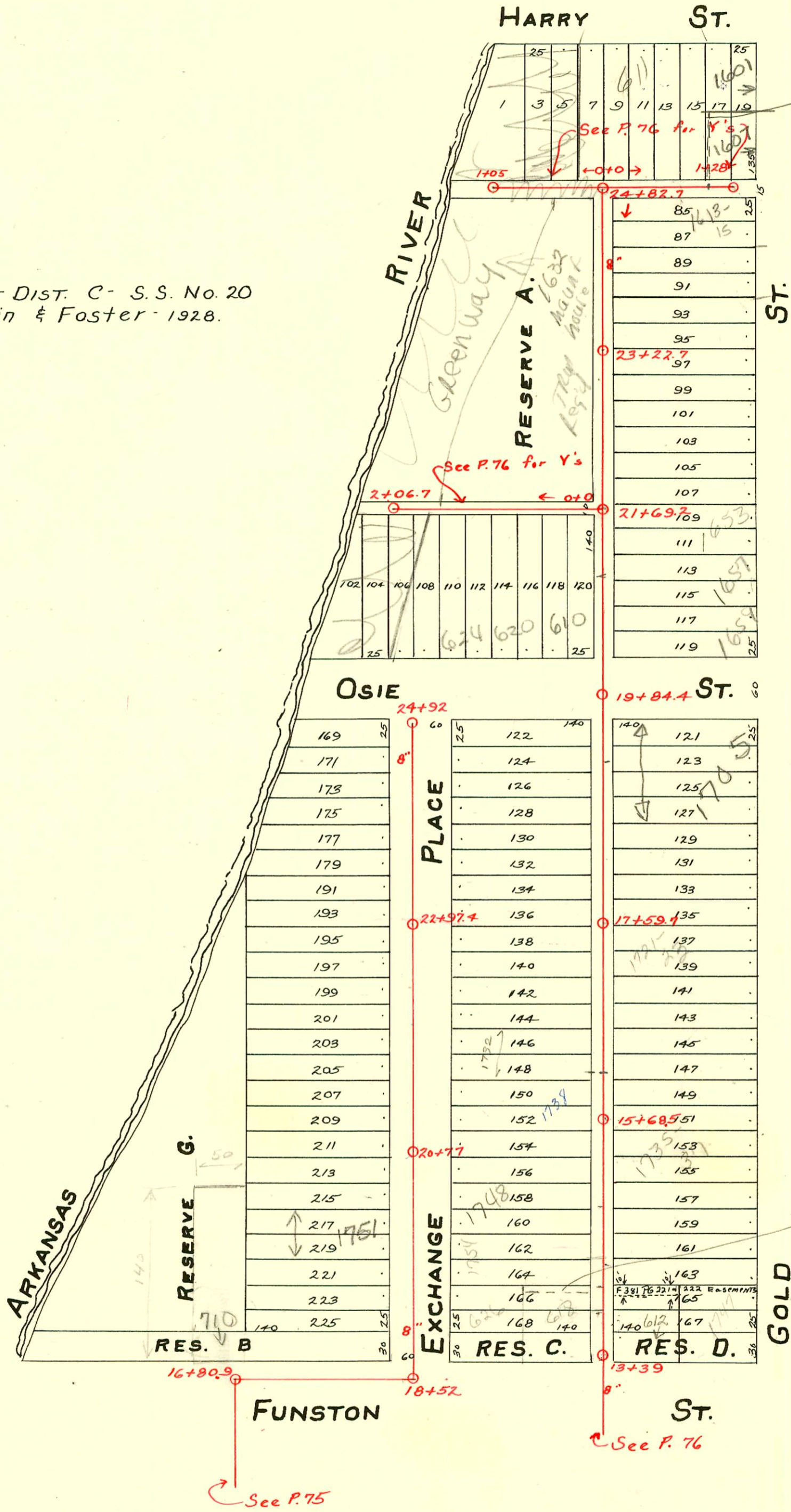


LAT. 17-DIST. C- S.S. No. 20
Chapin & Foster - 1928.



1607 S Gold
W. 5' of S 65' of
Lot 17 granted
as sewer easement
to 1601 Gold
Film 2336
page 6001
12/5/2001
PK

618 a Funston
Palo S' Esm +
granted to
GAB Funston
see the

See P. 76 for Y's

See P. 76 for Y's

See P. 76

See P. 75

CONSTRUCTION RECORD

SERVICE RECORD

STATION	ELEVATION		Depth	MANHOLE	4-INCH "Y" BRANCHES		No. of Permit		House Number		DATE OF PERMITS	
	Ground	Grade			North West	South East	North West	South East	North West	South East	North West	South East
Line in Exchange Pl. from Funston to Osie.	18+0	101.89	99.01	2.88	18+52	18+95.7						
	19+0	101.57	99.11	2.46		19+21.2	#3454		1755 Exchange		2-24-50	
						19+47.7						
						4" PVC - 60						
						19+72.7		#3453		1751 R Exchange		4-11-53
						19+98.4						2-24-50
	20+0	103.07	99.21	3.86		20+26.4		#3452		1745 Exchange		2-24-50
						20+49.7						
					20+77	20+75.3		#3451		1741 Exchange		2-24-50
						21+01.7						
	21+0	103.37	99.31	4.06		21+27.2						
						21+52.7		#2076		1735 Exchange		5-28-45
						21+78.4		#1911		1727 Exchange		7-16-52
	22+0	101.97	99.41	2.56		22+05						
						22+29.7		#125		1721 Exchange		2-19-52
					22+56.1							
					22+81.4							
				22+97.4	22+99.4							
23+0	101.67	99.51	2.16		23+06.7							
					23+33.1							
					23+59.2							
					23+84.3							
24+0	103.07	99.61	3.46		24+09.7							
					24+33.4							
					24+59.7							
25+0	102.17	99.71	2.46	24+92	24+94.1							
Line in Alley W. of Gold from Funston No.	13+0	102.08	98.50	3.58	13+39	13+57	13+54.5	5065 #935	624 W. Funston	1751 Gold	8-5-57	9-4-30
	14+0	102.62	98.60	4.02		14+08.5	14+06	#1054	1754 Exchange	1743 Gold	2-25-53	2-9-30
						14+33.5	14+31	#4204 #64				
						14+58.5	14+56					
						4" SCH 40 14+90						
						14+83.5	14+81	2001-00258 #3201 #1053	1748 R Exchange	1739 Gold	2-6-51	8-13-29
	15+0	102.02	98.70	3.32		15+08.5	15+06					
						15+36.5	15+34	#3200	1742 Exchange	1735 Gold	2-2-50	5-8-30
					15+68.5	15+61.5	15+59	#3199	1738 Exchange		2-2-50	
						15+89	15+86.5					
	16+0	103.69	98.80	4.89		16+14	16+11.5	#3198	1732 Exchange	1731 Gold	2-2-50	8-27-54
						16+39.5	16+37					
						16+66	16+63.5	#4686	1728 Exchange		5-16-51	
						16+91.5	16+89	#1062				
	17+0	104.11	98.90	5.21		17+16.5	17+14	#858	1720 Exchange	1725 Gold	5-4-50	8-14-29
						17+42	17+39.5					
					17+59.7	17+67.5	17+65	#4684	1718 Exchange	1721-29 Gold	5-16-51	7-30-45
						17+93.5	17+91					
	18+0	103.62	99.0	4.62		18+19.5	18+17	#4685	1214 Exchange	1711 Gold	5-16-51	10-31-29
						18+45	18+42.5					
						18+71	18+68.5	#3197	1708 Exchange		2-2-50	
						18+96	18+93.5					
	19+0	103.74	99.10	4.64		19+21	19+18.5	#2492	1702 Exchange	1705 Gold	11-16-49	4-10-03
						19+84.4	19+81.5					
	20+0	102.46	99.20	3.26		20+21.5	20+19	#1307	610 Osie	1659 S. Gold	12-19-47	5-19-52
					20+47	20+44.5	#1316					
					20+69.5	20+67	#331					
21+0	103.76	99.30	4.46		21+0							
					21+26							
				21+69.2	21+67	21+64.5	#177		1653 Gold		2-29-28	
					21+74		#2975		1649 Gold		11-4-50	
22+0	104.16	99.40	4.76		22+01.5	21+99						
					22+28	22+25.5						
					22+54.5	22+52	#1589		1637 Gold		11-4-29	
					22+76.5	22+74	#1565		1633 Gold		10-31-29	
23+0	104.26	99.50	4.76		23+02.5	23+0	#81425		1631 Gold		4-3-64	
				23+22.7	23+28	23+25.5						
					23+53.5	23+51						
					23+79	23+76.5	#52507		1621 Gold		11-20-75	
24+0	104.76	99.60	5.16		24+05	24+02.5						
24+82.7	104.41	99.68	4.73	24+82.7	24+30	24+27.5	#42244		1613-15 So. Gold		11-13-73	

2001-00258 - 21601 - 1748 S Exchange - McClung - (Prev msmt wrong) 4" SCH 40, 4" wye rep 78' S of MH 15+68.5 (14+90)
 Replaced entire line - 1 Twinco, 1V22, Dirt Alley Cut

#6712 - Tap - 1739 Gold - 10-15-53 - Joe McDonald
 #4205 - Tap - 626 W. Funston - 2-25-53 - Frederick Pibq. Co.
 #1606 - Tap - 601 W. Harry - 3-17-47 - Geo. Magruder.
 #3425 - Tap - 710 W. Funston - 2-23-50 - Chas. Burgan - (#2000 Special Fee Paid 2-23-50) (4" ABS)
 #3455 - Tap - 1759 Exchange - 2-24-50 - Eugene Reynolds.
 #1514 - Tap - 1751 Exchange - 6-3-52 - Kendall Pibq. Co.
 #00804 - 1747 S. Gold - 7-18-50 (Exceed Love) MH 13+39 (14+03.0) (6" N of MH)
 #17805 - 1735 S. Gold - 2-2-57 - Jerry Roodman N.C. (Tap 15+33.5)
 SW 2200 - 0174 - 626 W. Funston - 4" sch 40 PVC, 6" wye @ 68.9' N of MH - Redd (Ind 7/1/00)