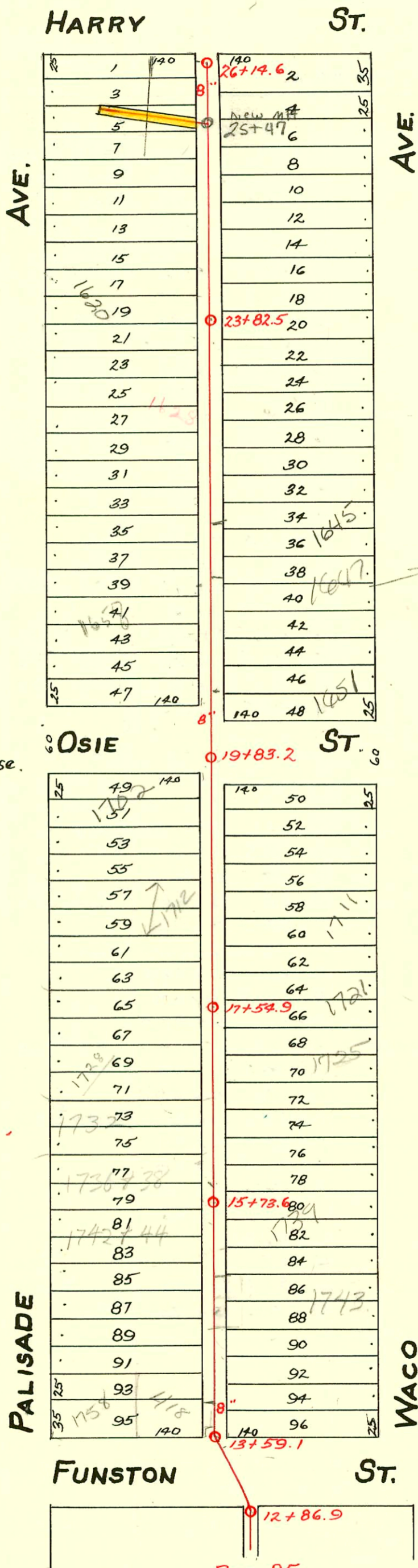


LAT. K- DIST. C- S. S. No. 20- 1919

Easement dated Nov. 29, 1921, by and between Walter Creal & Ida Creal, his wife, and City of Wichita of the second part. Five (5) ft. on each side of a line beginning at a point one hundred (100) ft. west and fifty-one (51) ft. south of the N.E. corner of Lot 1, Palisade Ave., Howard Street Addition to the City of Wichita; thence in a southeasterly direction to a point fifty (50) ft. west and sixty-three ft. south of the northeast corner of said lot 1. And said second party is hereby granted the right to enter upon said premises at any time for the purpose of constructing, operating, maintaining and repairing such sewer and sewer system. Signed Walter Creal - Ida Creal

Easement dated Nov. 29, 1921, by and between Samuel Spease and Gertrude Spease, his wife, and City of Wichita of the second part. Five (5) ft. on each side of a line beginning at a point sixty-three (63) ft. south and fifty (50) ft. west of the north east corner of Lot One, Palisade Ave., Howard Street Addition to the City of Wichita; thence in a southeasterly direction to a point in the center of the Alley east of Palisade Ave. and sixty-seven (67) ft. south of the center of a sanitary sewer manhole in said alley immediately south of Harry St. Said second party is hereby granted the right to enter upon said premises at any time for the purpose of constructing, operating, maintaining and repairing such sewer and sewer system. Signed Samuel Spease & Gertrude Spease.



1607 SWACO - Front House
 can for front house is 129' s.
 of MH 5445247
 city crew recommend using 4" PUC40
 17' of 4" sch 40
 (15) 4" shear coupled
 per T. Cox 6/29/05

2003-03299 12/16/03 418 W Funston
 Twinco, 1H45, 2V45, R4Criser 12'
 W of MH 13+59.1 (13+70.1) 4" 40PUC

- 2000-02696- 12/1/00- 1702 S Palisade- Kansas Ditch- 4" sch 40 - Replaced all but lower 6' - TWIN CO,
- 2002-02330- 8/26/02- 1748 S Palisade- Dales Pibg- 4" PESPR17 - Pipe burst replacement - TWIN CO @ house, Replace entire line- 4" city tap into new. 5' section of city main - 31' W of MH 13+59.1 (13+87.1) 1H45, 2V45, dirt alley cut
- 2002-00537- 2/27/02- Olson Sewer- 1721 S Waco- 4" PUC40 - TWIN CO
- 2006-00428- 4/6/06- Bob Swer - 1791 S Waco - 4" sch 40 PUC, twinco

CONSTRUCTION RECORD						SERVICE RECORD						
STATION	ELEVATION		Depth	MANHOLE	4-INCH "Y" BRANCHES		No. of Permit		House Number		DATE OF PERMITS	
	Ground	Grade			North West	South East	North West	South East	North West	South East	North West	South East
14	105.18	97.82	7.36	13+59.1	13+68.4	13+65.9	#2343	#100	#18 W. Funston	see next pg	3-24-49	2-1-24
				13+90.5	13+88.0	#539	#1758	Faliscade	see next pg	8-5-47		
15	105.28	97.92	7.36	14+15.0	14+12.5		#892		1752 R Faliscade		5-19-47	12-22-23
				14+42.8	14+40.3	#48		1755 S. Waco				6-16-36
				14+65.3	14+62.8	#216	#1748	Faliscade	1743 S. Waco		11-6-46	10-26-67
				14+90.0	14+87.5	#891	#1817	Faliscade				12-11-23
				15+15.0	15+12.5	#19062	#174244	Faliscade	1739 S. Waco		8-5-66	4-6-67
16	104.78	98.02	6.76	15+40.2	15+37.7		#6139	#861	1736-38 Faliscade	1739 S. Waco	8-5-66	10-4-47
				15+65.2	15+62.7		18063		1739 S. Waco			4-6-67
				15+73.6			#86143		1730 Faliscade		8-8-66	
				15+89.7	15+86.9	#138	#1824	Faliscade			8-5-66	
				16+14.4	16+11.9	#1422		1735 S. Waco				10-5-29
17	104.68	98.12	6.56	16+39.4	16+36.9		#416		1735 Faliscade		11-18-63	
				16+64.6	16+62.1	#774		1729 S. Waco				7-13-25
				16+89.5	16+87.0	#151		1728 Faliscade				3-12-29
				17+14.5	17+12.0	#288	#1941	Faliscade	1725 S. Waco		4-2-29	6-2-65
				17+39.5	17+37.0							3-15-75
18	105.38	98.22	7.16	17+64.5	17+62.0		#83	#1316	174 Faliscade		2-20-31	9-6-23
				17+89.7	17+87.2							
				18+14.5	18+12.0	#2189	#91	1712 R Faliscade	1711 S. Waco		10-6-94	3-9-75
				18+39.5	18+37.0							9-25-24
				18+64.7	18+62.2	#1290		1706 Faliscade				8-30-23
19	104.68	98.32	6.36	18+89.9	18+87.4		#942				11-15-46	
				19+14.5	19+12.0	#80		1702 R Faliscade	see next pg 1709 W. Osie		11-1-00	2-13-24
				19+39.9	19+37.4	#1842	#1047				3-23-48	8-12-29
				19+83.2								
				20+20.5	20+18.0	#860	#1096	1660 Faliscade			8-4-25	12-23-26
21	104.83	98.52	6.31	20+45.5	20+43							
				20+70.4	20+67.9							
				20+95.5	20+93.0							
				21+21.0	21+18.5	#1560		1658 Faliscade			11-16-71	
				21+46.1	21+43.6	#1083		1649 S. Waco			7-7-24	12-20-26
22	105.43	98.65	6.81	21+70.7	21+68.2		#945	#1082	1645 R Faliscade	1647 S. Waco	7-18-03	12-20-26
				21+95.5	21+93.0							6-2-23
				22+20.5	22+18.0	#995		1632 Faliscade			9-3-24	
				22+46.2	22+43.7	#627	#695	1628 Faliscade	1637 Waco		5-29-29	5-9-23
				22+69.8	22+67.3	#585		1626 Faliscade			5-21-29	
23	105.43	98.72	6.71	22+95.7	22+93.2							
				23+20.5	23+18.0	#381	#1310	1628 Faliscade	1631 S. Waco		4-15-25	12-7-25
				23+45.0	23+42.5	#986	#1493				5-1-24	10-9-23
				23+70.0	23+67.5							
				23+82.5								
24	105.53	98.82	6.71	23+95.5	23+93.0							
				24+20.3	24+17.8	#1084		1621 S. Waco			5-12-24	
				24+46.4	24+43.9	#1696					11-16-23	
				24+71.5	24+69.0	#1929		1620 Faliscade			8-25-24	
				24+96.3	24+93.8	#1916	#212				8-22-24	3-24-21
25	105.92	98.92	7.00	25+21.5	25+19.0							
				25+46.9	25+44.4	#1127	#443	1607 S. Waco		11-15-21	5-27-26	
				25+71.5	25+69.0	#445					3-29-23	
				25+94.0		#390					3-20-23	
				26+14.6								

#3976 - Rear - 1739 S. Waco - 2-28-51 - Frederick Plbg. Co.
 #1856 - Top - 415 W. Harry - 7-11-52 - Simmons Plbg. Co.
 #1063 - Top - 417 W. Harry - 6-1-54 - Simmons Plbg. Co.
 #5055 - Top - 1647 S. Waco - Millard Stigers - 6-2-55.
 #C5779 top - 1743 S. Waco - Boyer Plbg - 11-16-67
 #C62035 - 1650 Faliscade - 7-14-77 - La Foy
 #C62037 - Top - 1652 Faliscade - 7-14-77 - La Foy (21+015)