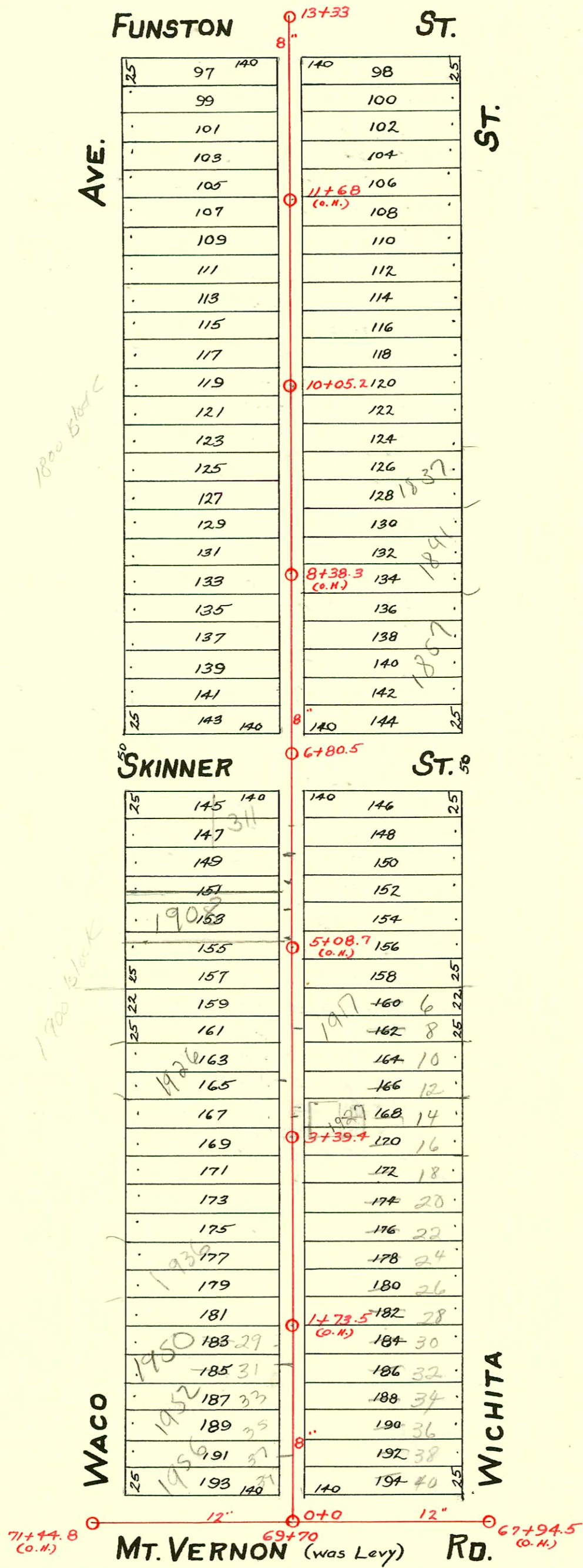


LAT. A - DIST. C - S.S. No. 20 - 1912



CONSTRUCTION RECORD						SERVICE RECORD						
STATION	ELEVATION		Depth	MANHOLE	4-INCH "Y" BRANCHES		No. of Permit		House Number		DATE OF PERMITS	
	Ground	Grade			North West	South East	North West	South East	North West	South East	North West	South East
67	102.67	95.66	7.01	67+94.5 (O.H.)								
68	103.27	95.74	7.53									
69	104.43	95.82	8.61									
	104.53	95.87	8.66	69+70								
70	104.83	95.90	8.93									
71	104.93	95.98	8.95	71+44.8 (O.H.)								
0	104.31	96.05	8.26	0+00	0+33 4" PVC 0+58	0+30.5 0+55.5	#110 #1369	#1098	320 W. Mt Vernon Waco		3-5-56 6-11-24	5-13-24
					0+84	0+81.5	#1411	#411	1952 S. 1953 S. Waco Wichita		7-6-54	7-16-48
1	104.77	96.17	8.60		1+08.5	1+06	#846		1952 S. Waco		4-16-24	
					1+31	1+28.5		#1036	1957 S. Polsee Elbow		12-11-02	8-18-22
					1+56	1+53.5	#420		1946 S. 1940 Waco		3-6-24	
					1+84	1+82	#2218	#413 1/2	Waco		9-30-24	3-6-24
2	104.19	96.29	7.90		2+09.5	2+07		#1104	1936 1938 S. Waco		10-5-25	
					2+35.5	2+33						
					2+61	2+58.5		#1811				12-10-23
					2+86.5	2+84						
3	104.95	96.41	8.54		3+11.5	3+09			1930 S. Waco		11-26-51	
				3+39.4	3+35	3+32.5	#6611	#1791	1927 S. Waco		5-6-24	12-9-23
					3+60.5	3+58	#1031		1923 S. Wichita			12-12-25
					3+86	3+83.5		#1334				
4	105.29	96.53	8.76		4+11	4+08.5			1917 S. Wichita			1-30-28
					4+36	4+33.5		#78				
					4+61.5	4+59	#610		1912 S. Waco		6-4-25	
					4+87	4+84.5						
5	104.45	96.65	7.80		5+14.5	5+12	#541	#992	1908 S. Waco		5-20-25	5-1-24
					5+39.5	5+37						
					5+65	5+62.5		#991				5-1-24
					5+90.5	5+88	#279	#946	1906 S. Waco		3-26-25	4-25-24
6	104.25	96.77	7.48		6+18.5	6+16	#1573	#380	317 Skinner		7-8-24	4-24-22
					6+41.5	6+39						
				6+80.5								
7	105.01	96.89	8.12		7+14.5	7+12	#114				3-30-16	
					7+42.5	7+40						
					7+68	7+65.5	#855				12-17-23	
					7+94	7+91.5	#1856				12-17-23	
8	105.15	97.01	8.14		8+18.5	8+16	#491		1854 S. Waco		5-8-28	
					8+44	8+41.5						
					8+68.5	8+66	#764	#378	1840 S. Waco		6-26-29	3-4-24
					8+94.5	8+92						
9	105.53	97.13	8.40		9+20	9+17.5	#1564	#318	1836 S. Waco	1837 S. Wichita	9-12-49	4-1-25
					9+45	9+42.5						
					9+70.5	9+68						
					9+96	9+93.5						
10	105.66	97.25	8.41	10+05.2	10+21	10+18.5	#292	#608	1824 S. Waco		6-19-46	8-2-20
					10+46.5	10+44	#1957		1822 S. Waco		5-29-42	
					10+72	10+69.5						
					10+97.5	10+95	#1849	#479		1817 S. Wichita	12-15-23	8-5-46
11	104.45	97.37	7.08		11+25.5	11+23						
					11+50.5	11+48						
					11+76	11+73.5	#1517		1810 S. Waco		6-4-52	
						11+99						
12	104.75	97.49	7.26		12+01.5							
					12+27	12+24.5		#326				6-11-13
					12+52.5	12+50		#2209	1805 S. Wichita			8-7-45
					12+77.5	12+75	#597				3-27-24	
13	104.40	97.61	6.79	13+33								

2002-03341-12/1/02-1950 S Waco - Rons P/bg - 4" PVC - 4" CITY TAP INTO NEW 3' section of main - 131'
 N - Replaced 3' of sewer only - Dirt Alley cut

2003-00071-1/8/03-1950 S Waco - Rons P/bg - 4" PVC - Replace ad but lower 8' and upper 9' - 1422,
 1422 - 4" TWN @ house - Dirt Alley cut

96-20857 12-13-96 1956 S. Waco - Rep

96-14895 7 9-10-96 (311 W SKINNER) Henning

Tap #1018-1926 S. Waco - 7-29-38 - Vernon Shellenberger.
 #3071 - Tap - 1837 S. Wichita - Phipps P/bg. 11-16-56
 #58923 - tap - 1940 S. Waco - addn. - 12-1-76 - Al Henning (1+84)