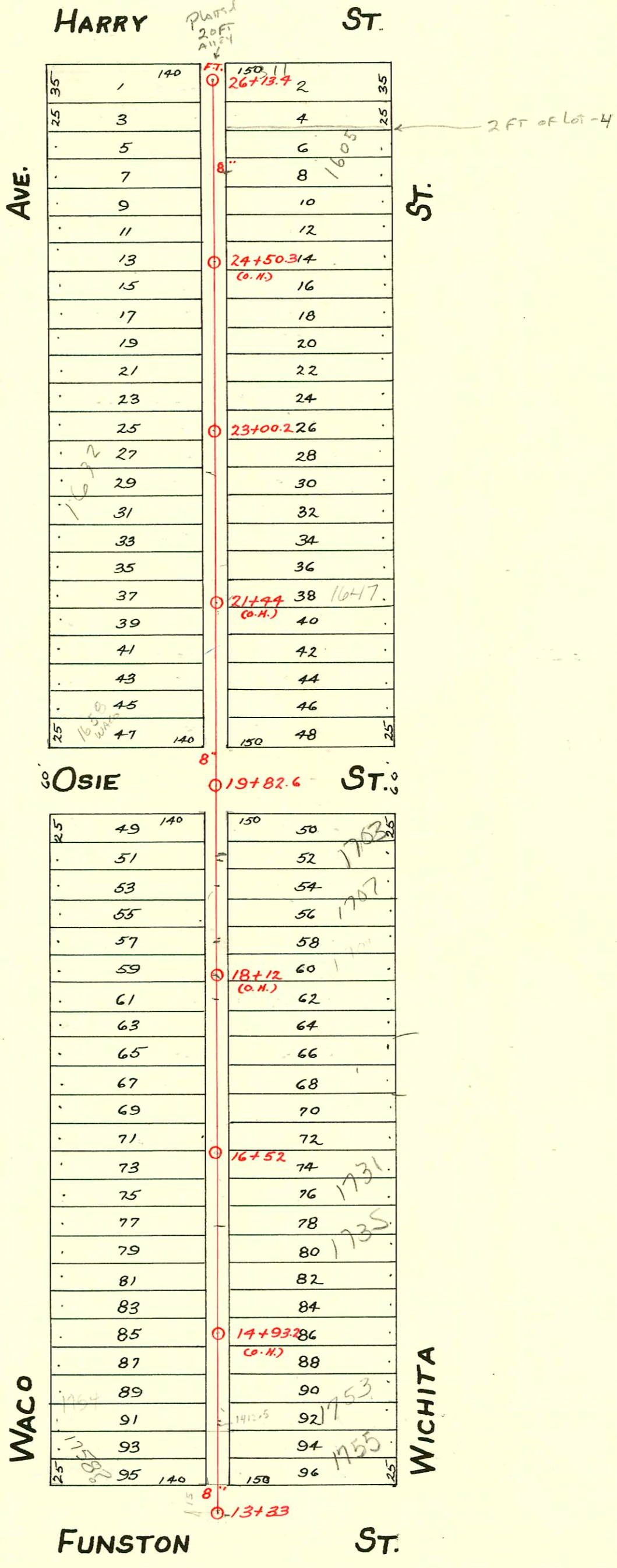


LAT. A - DIST. C-S.S. No. 20-1912



CONSTRUCTION RECORD

SERVICE RECORD

STATION	ELEVATION		Depth	MANHOLE	4-INCH "Y" BRANCHES		No. of Permit		House Number		DATE OF PERMITS		
	Ground	Grade			North West	South East	North West	South East	North West	South East	North West	South East	
13	104.40	97.61	6.79	13+33	13+64	13+79.5	#361	#568	1756 S Waco	1755 S Wichita	3-3-24	12-2-12	
14	104.77	97.73	7.04		13+89.5	13+87	#1887	#3452	1754 S Waco	1753 S Wichita	12-21-23	5-8-41	
					14+15	14+12.5							
					14+40.5	14+38							
15	105.05	97.85	7.20		14+66	14+63.5	#579	#1334		1743 S Wichita	12-21-23	9-10-23	
					14+91.5	14+89							
					15+16	15+13.5	#867						
					15+39.5	15+37							
16	104.66	97.97	6.69	16+52	15+64	15+61.5	#362	#316	1738 S Waco	1735 S Wichita	3-3-24	5-22-14	
					15+89	15+86.5	#1909	#1715	1731 R Wichita	12-27-23	6-6-26	9-2-14-22	
					16+14.5	16+12	#1111						
					16+40	16+37.5	#2107						
17	104.96	98.09	6.87		16+65.5	16+63	#222	#257	1728 S Waco	1728 S Waco	6-20-45	5-14-49	
					16+91	16+88.5							
					17+16.5	17+14							#148
					17+41.5	17+39							#335
18	104.85	98.21	6.64		17+67	17+64.5	#285	#545	1710 S Waco	1705 S Wichita	3-6-23	10-21-24	
					17+93	17+90.5	#1285	#51	1714 S Waco	1703 S Wichita	4-3-50	10-19-23	
					18+18	18+15.5	#1265	#884			8-27-23	11-7-23	9-26-21
					18+43.5	18+41							
19	104.72	98.33	6.39		18+69	18+66.5	#1627	#884					
					18+94	18+91.5							
					19+19.5	19+17							
20	104.18	98.45	5.73	19+82.6	19+44.5	19+42	#727	#823	1657 S Waco		1-4-26	12-12-23	
					20+26.5	20+24							
					20+57.5	20+49							
					20+79	20+76.5							
21	104.32	98.57	5.75		20+26.5	20+24	#319	#966	1657 S Waco	1657 S Waco	4-21-26	5-29-24	
					20+57.5	20+49	#1238	#449	1642 S Waco	1651 S Wichita	11-7-27	7-24-46	
					21+04	21+01.5	#766	#1911			8-23-21	12-27-23	
					21+29.5	21+27							
22	104.73	98.69	6.04		21+57	21+54.5	#262	#543			2-21-24	4-17-23	
					21+82.5	21+80							
					22+08	22+05.5							
					22+33	22+30.5							
23	104.87	98.81	6.06	23+00.2	22+58.5	22+56	#884	#209	#1172	1615 S Wichita	2-15-24	10-23-25	
					22+83.5	22+81							
					23+09	23+06.5							
					23+34	23+31.5							
24	104.21	98.93	5.28		23+60	23+57.5	#240	#890	1611 S Wichita	1609 S Wichita	2-20-23	10-20-27	
					23+84.5	23+82							
					24+10	24+07.5							
					24+35	24+32.5							
25	104.07	99.05	5.02		24+60.5	24+58	#4923	#127	1608 S Waco		6-9-51	2-6-24	
					24+86	24+83.5	#241	#259	1608 S Waco	1601 S Wichita	2-20-23	5-4-17	
					25+11.5	25+09	#192				3-21-21		
					25+37	25+34.5							
26	104.28	99.17	5.11	26+05.6 F.T.	25+60	25+57.5							
					25+80.5	25+88							

2000-011600-5/19/00-1703 S Wichita - Arrowhead Exc - 4" SCH 40, Wye Rep - 77' S of MH 19+82.6 (19705.6) Replace entire line - 1 TWIN CO, 2 H45, Dirt Alley Cut

2001-00363-2/20/01-1735 S Wichita - Padgett Exc - Msmt OK - 4" SCH 40 - TWIN CO, 2V22, 2H22, 2H45

2004-00402-2/17/04-1658 S Waco - Wichita Pibg - 4" PVC 40 4" existing tap 75' N of MH 19+82.6 (19707.6) 1/4" fall, shallow Replaced entire line, dirt alley cut, 4" CO @ house, 1V22, 2H45

C74865 1718 S. Waco Vic R.R. Campbell 10-15-79
 #3109 1758 S Waco 4-13-81 J.C. Lewis (13733.0 N) (13756.3 - 23-3 N)
 C74864-1718 S. Waco - Repair - 10-15-79 (17+92.0)

#2259 - 1653 S. Wichita - Reynolds Pibg. - 9-10-56 - Used old connection.
 #292 - Tap - 1658 S. Waco - Reynolds Pibg. - 3-22-56
 #311 W. Harry - #1380 - W.A. Zahorek - 9-27-29 Harry (25+20.2 + 33.8' E of M.H.)
 #894 - Tap - 1658 S. Waco - Geo. Magruder - 10-9-47 - Wichita Pibg. - see above
 #4922 - Tap - 1608 S. Waco - Rex Robertson - 6-9-51
 #4657 - Tap - 301 W. Harry - 3-27-53 - Joe McDonald