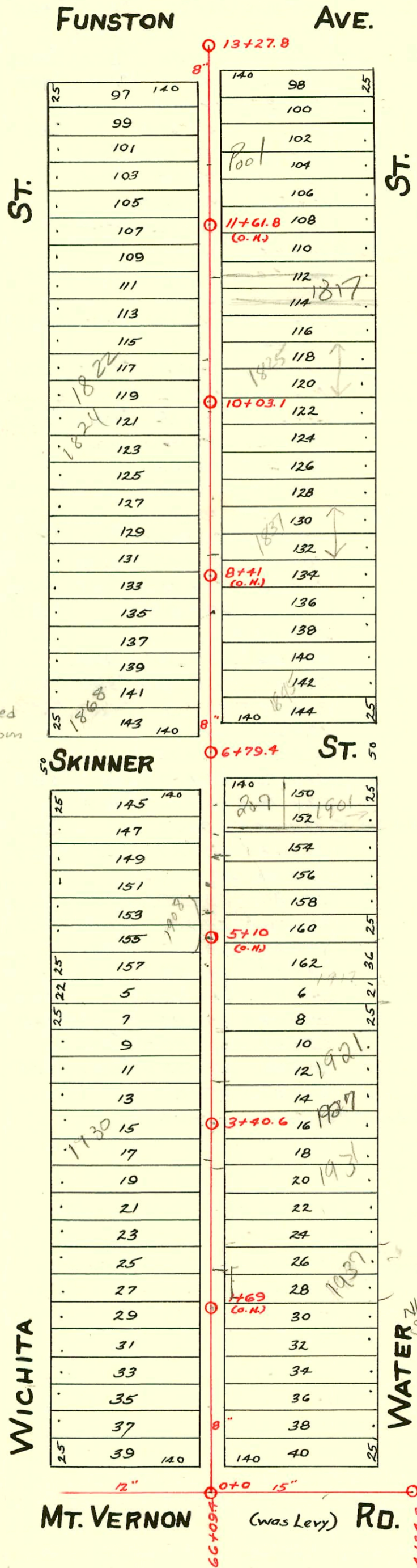
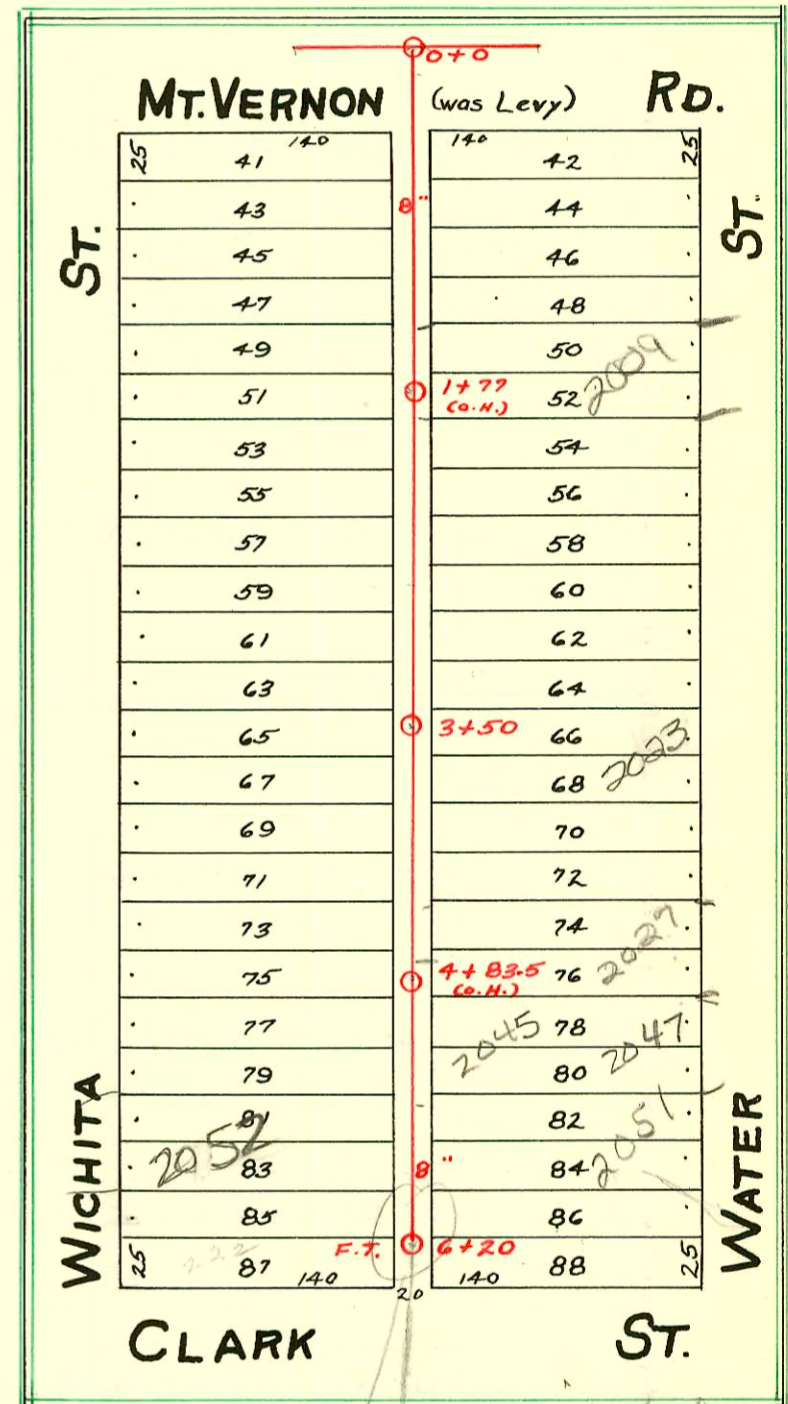


LAT. B - DIST. C - S.S. No. 20  
1912



LAT. I - DIST. C  
S.S. No. 20 - 1915



N/C 2000-02623-11/30/00 - 1868 S Wichita - Brand P1bg - 4" SCH 40 - New house tied into existing 6" clay tile line 1 1/2' from main - Wye is 30.6' N of MH 6+79.4 (7+09.4) TWINCO, 1H22, 1H45, DIRT ALLEY OUT

2003-00765 3/26/03 2009 S water - McCullough Exc - 4" PVC, 1TWINCO, 2V22 - shallow - 148' S of MH 0100 (1148)

SW 2001-01012 4/27/01 207 W Skinner H.D. Mills Const: s/o 12' N of SPL + 3' from RPL  
 98-21606-7 11/27/98 1997 water - McClung's - 4" SCH 40 main rep-city 13.9' N of MH 3+40.9 (3+54.5) 245V, WYE - 2CO, 3V22  
 95-2608-7 2-27-95 1817 S water - s/o 9' N of SPL and 3' from main  
 95-14396-7 9/14/95 1822 S Wichita - 4" sch 40 PVC @ 4" PVC C.O. - 1 4" PVC wye to 2nd knockout, tie off back to exist line  
 # 91-34244-7 11/2/91 1824 S Wichita - Hemming - s/o at main sta 9+67.1  
 2001-01027/0 2045 Water - Rear House - 5/3/01 - McClung's - 4" clay tile line s/o 23' from RPL + 6.5' S of NPL

See Arcue...  
This MH would

SW 2000-02400-2051 S water - 4" sch 40 PVC, 1H1, 1H2, 1H3, 1H4, 1H5, 1H6, 1H7, 1H8, 1H9, 1H10, 1H11, 1H12, 1H13, 1H14, 1H15, 1H16, 1H17, 1H18, 1H19, 1H20, 1H21, 1H22, 1H23, 1H24, 1H25, 1H26, 1H27, 1H28, 1H29, 1H30, 1H31, 1H32, 1H33, 1H34, 1H35, 1H36, 1H37, 1H38, 1H39, 1H40, 1H41, 1H42, 1H43, 1H44, 1H45, 1H46, 1H47, 1H48, 1H49, 1H50, 1H51, 1H52, 1H53, 1H54, 1H55, 1H56, 1H57, 1H58, 1H59, 1H60, 1H61, 1H62, 1H63, 1H64, 1H65, 1H66, 1H67, 1H68, 1H69, 1H70, 1H71, 1H72, 1H73, 1H74, 1H75, 1H76, 1H77, 1H78, 1H79, 1H80, 1H81, 1H82, 1H83, 1H84, 1H85, 1H86, 1H87, 1H88, 1H89, 1H90, 1H91, 1H92, 1H93, 1H94, 1H95, 1H96, 1H97, 1H98, 1H99, 1H100

2003-02865-11/2/03- 2023 S water - Wichita Exc - 1TWINCO, 1H22, 1V22, 1V45, CITY WYE repair, 4" Predco, 9.6' N of 3+50 (3+40.4) shallow, 4" 40 PVC

### CONSTRUCTION RECORD

### SERVICE RECORD

STATION	ELEVATION		Depth	MANHOLE	4-INCH "Y" BRANCHES		No. of Permit		House Number		DATE OF PERMITS	
	Ground	Grade			North West	South East	North West	South East	North West	South East	North West	South East
64	102.16	95.22	6.94									
65	101.96	95.30	6.66									
66	102.37	95.38	6.99									
	102.37	95.59	6.78	66+09.4								
67	102.67	95.66	7.01									
0	102.06	95.80	6.26	0+00	0+25	0+22.5			1954 S. Wichita		10-24-24	
					0+52.5	0+50	#2400					
					0+78	0+75.5	#760					8-22-21
1	102.35	95.92	6.43		1+03	1+00.5	#517				4-11-23	
					1+28.5	1+26	#245					5-24-21
					1+54	1+51.5	#1186				8-9-23	
					1+80	1+77.5	#1447				10-1-23	
2	102.42	96.04	6.38		2+06	2+03.5						
					2+30.5	2+28	#622	#806			4-27-23	3-31-19
					2+56	2+53.5	#754	#1097			5-18-23	11-8-21
					2+91	2+78.5	#830				6-1-23	
3	102.87	96.16	6.71		3+05.5	3+03	#1703				11-19-23	
				3+40.6	3+31	3+28.5	Rep #8-21606-7					
					3+56	3+54.5	#790	#76	1927 S. Water	see next pg	5-26-23	11-28-98
					3+82	3+79.5	#1845	#1207	1921 Water		12-14-23	5-26-24
4	102.37	96.28	6.09		4+07	4+04.5						
					4+32	4+29.5			1919 Water		9-11-23	3-31-22
					4+57.5	4+55	#345	#257				
					4+83	4+80.5		#1042				10-28-21
5	103.31	96.40	6.91		5+08	5+05.5	#173				3-13-22	
					5+32.5	5+30		#532				6-21-21
					5+58.5	5+56	#694				6-20-22	
					5+84	5+81.5		#697				8-8-21
6	103.02	96.52	6.50		6+07	6+04.5	#1029	#1224			8-17-22	12-8-21
				6+79.4	6+32	6+29.5		#1024				10-25-21
7	102.81	96.64	6.17		7+12.5	7+10	#893	#259	1856 S. Water	1846 S. Water	12-15-20	5-10-13
					7+38	7+35.5	#651				6-16-25	
					7+63	7+60.5	#75	#568			1-15-23	5-26-22
					7+88	7+85.5						
8	102.60	96.76	5.84		8+13.5	8+11	#629	#884			7-20-21	6-8-23
					8+39	8+36.5		#411				4-27-22
					8+64.5	8+62	#377	#235	1837 Water		3-4-24	4-21-14
					8+89.5	8+87						
9	103.17	96.88	6.29		9+15	9+12.5	#1062				8-25-22	
					9+40.5	9+38		#1277				12-23-21
					9+65.5	9+63	#1526		1826 S. Wichita		10-29-24	7-1-24
					9+91	9+88.5	#1356	#1825			9-14-23	12-12-23
10	103.36	97.00	6.36	10+03.1	10+17	10+14.5						
					10+42.5	10+40		#555				11-25-12
					10+68	10+65.5		#96				3-4-13
					10+93.5	10+91	#196	#102			2-14-24	3-6-13
11	103.12	97.12	6.00		11+19	11+16.5		#94				3-3-13
					11+44.5	11+42		#528				11-15-12
					11+69.5	11+67	#317				5-19-17	
					11+95	11+92.5	#959				10-11-21	
12	102.76	97.24	5.52		12+21	12+18.5		#13	1806 S. Wichita	1809 S. Water	9-18-24	1-14-13
					12+46.5	12+44	#2138	#526			6-12-16	11-14-12
					12+71.5	12+69	#240					
					12+97.5	12+95						
13	103.23	97.36	5.87	13+27.8								
0					0+56.5	0+54		#515				6-16-21
					0+77.5	0+75	#1780	#487			12-4-23	6-10-20
					0+98.5	0+96						
1	102.36	95.90	6.46		1+25	1+22.5	#1145	#260			5-19-24	4-6-20
					1+51	1+48.5	#810	#264	2009 R. Water	see next pg	4-14-24	3-25-03
					1+75	1+72.5						2-21-24
2	102.57	96.10	6.47		2+01	1+98.5	#1446	#444			10-1-23	9-2-15
					2+27	2+24.5						
					2+53.5	2+51	#1075	#357	2020 S. Wichita		9-29-25	4-20-22
					2+79.5	2+77						
3	102.31	96.30	6.01		3+00.5	2+98	#730				4-8-24	
					3+26.5	3+24						
				3+50	3+45	3+42.5	#131	#2865	2023 R. Water	see next		11-3-03
					3+72.5	3+70						3-28-18
					3+98.5	3+96	#697	#364			4-5-24	7-26-15
4	102.15	96.50	5.65		4+24.5	4+22						
					4+50	4+47.5	#698	#1190			4-5-24	8-9-23
					4+76	4+73.5		#633				11-4-18
5	101.88	96.70	5.18		5+02.5	5+00	#23		2048 S. Wichita	see next pg	5-20-48	
				no fittings	5+28	5+25.5		#1934				8-21-91
					5+51.5	5+49	#75	#1158	2051 S. Wichita	see next pg	2-2-26	9-8-22
					5+78	5+75.5						1-28-92
					5+96	5+93.5	#693				12-6-07	
6	101.96	96.90	5.06		6+14	6+11.5	#787	#134	2056 S. Wichita		7-16-25	3-27-18

#4906-Top-2026 S. Wichita - 6-8-51 - H.H. Creakmore  
 #2357-TGP-221 W. Levy - 8-29-52 - Vaughn Pibq.

#1840 1908 S. Wichita  
 #92-1623-1 1-28-92 2051 S. Water (4" clay 76 ft. so. of M.H.)