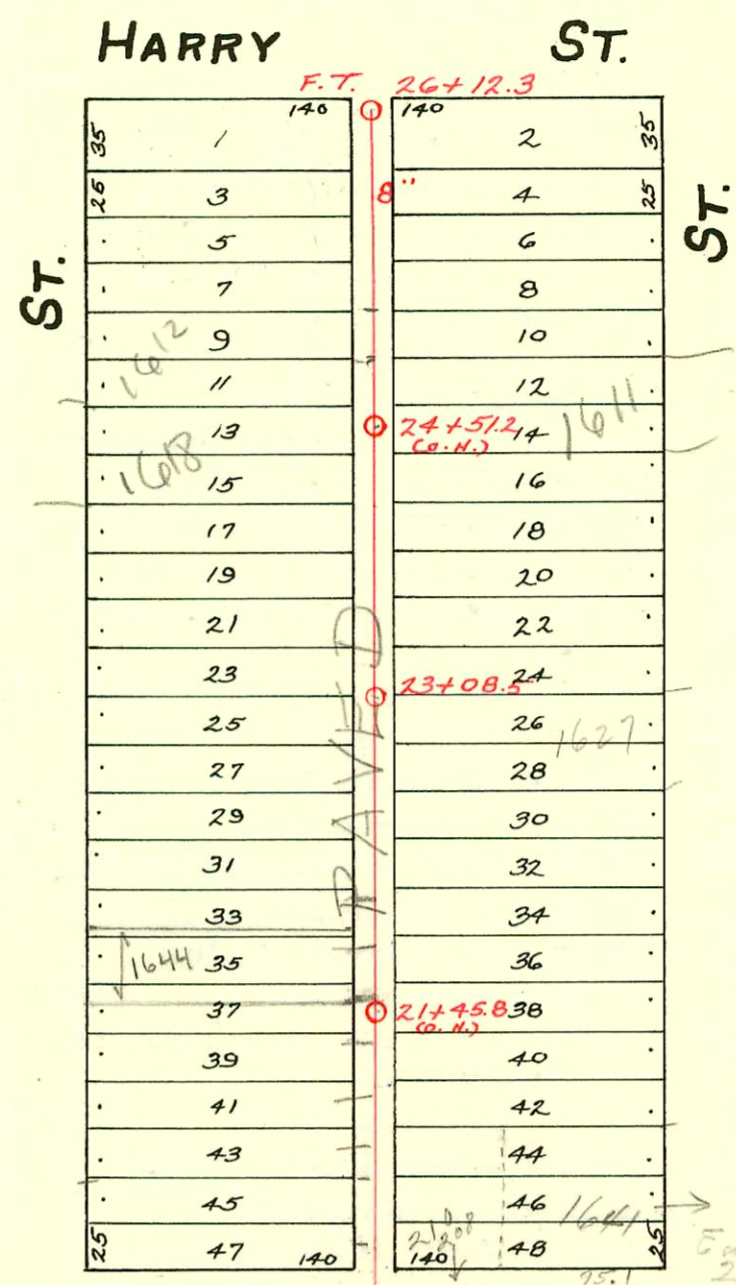
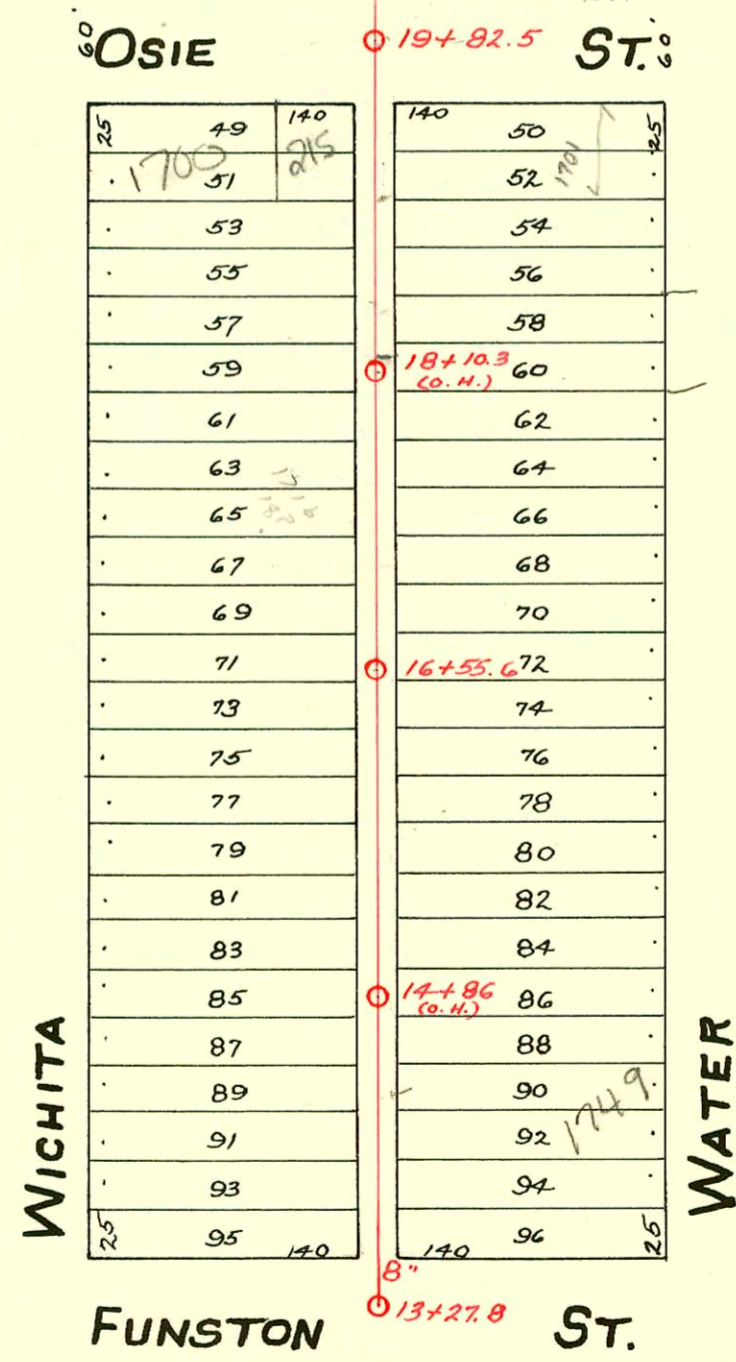


LAT. B - DIST. C - S.S. No. 20 - 1912



→ Easement Registered in Registry of Deeds 2-19-68



WICHITA

WATER

FUNSTON ST.

CONSTRUCTION RECORD						SERVICE RECORD						
STATION	ELEVATION		Depth	MANHOLE	4-INCH "Y" BRANCHES		No. of Permit		House Number		DATE OF PERMITS	
	Ground	Grade			North West	South East	North West	South East	North West	South East	North West	South East
13	103.23	97.36	5.87	13+27.8	13+63.5	13+61						
					13+89.5	13+87	#863	#462			6-5-23	6-2-20
14	103.15	97.48	5.67		14+15	14+12.5	#2485				11-6-24	
					14+40.5	14+38	#862	#249	1749	Water	6-5-23	5-8-13
					14+68.5	14+66	#142	#443			3-18-14	7-20-14
					14+91.5	14+97						
15	103.65	97.60	6.05		15+17	15+14.5		#38				1-29-13
					15+42	15+39.5	#399				12-15-15	
					15+67.5	15+65	#624		1738 S	Wichita	11-18-13	
					15+93	15+90.5						
16	103.46	97.72	5.74		16+18.5	16+16	#405	#551			7-21-13	10-7-13
				16+55.6	16+43	16+40.5						
					16+68.5	16+66	#321	#195	1734 S	1723 S	5-25-14	4-18-13
					16+94.5	16+92		#687				12-31-13
17	103.67	97.84	5.83		17+19.5	17+17	#153	#463		1717 S	4-26-15	8-22-13
					17+44.5	17+42						
					17+70.5	17+68	#1535	#520	1728 S	1709 S	11-14-22	10-26-15
					17+95.5	17+93						
18	102.94	97.96	4.98		18+20.5	18+18	#1053	#193	1708 S	1705	9-23-25	4-16-13
					18+46	18+43.5	#175		Wichita	Water	3-16-21	
					18+71.5	18+69						
					18+97	18+94.5		#272				4-10-20
19	103.47	98.08	5.39	19+82.5	19+22.5	19+20	#409	#89	1654 S	1641 S	7-6-14	7-6-14
20	103.28	98.20	5.08		20+24	20+21.5	#161	#89	1658 S	1641 S	3-6-26	2-22-21
					20+49.5	20+47	#33590	#285	1654 S	1652 S	7-14-22	
					20+75	20+72.5		#285	1652 S	208	4-13-26	10-3-21
					20+98			#589	Wichita	Water		7-5-21
21	103.83	98.32	5.51		21+00.5							
					21+26	21+23.5	#973				8-9-22	
					21+51	21+48.5	#390	#389			4-25-22	5-11-21
					21+76.5	21+74	#487	#656			5-12-22	7-27-21
22	104.01	98.44	5.57		22+02.5	22+00						
					22+27.5	22+25						
					22+53	22+50.5	#550	#583			6-27-21	10-2-14
					22+78.5	22+76	#347				5-16-21	
23	104.70	98.56	6.14	23+08.5	23+04.5	23+02		#223	1627 S	Water		5-11-15
					23+29.5	23+27	#560	#567			11-27-12	12-2-12
					23+55	23+52.5						
					23+80.5	23+78						
24	104.66	98.68	5.98		24+06.5	24+04	#150	#49			4-12-15	1-27-20
					24+31.5	24+29	#482				9-2-13	
					24+57	24+54.5						
					24+82	24+79.5		#552				11-23-12
25	105.02	98.80	6.22		25+09.5	25+05	#218	#218	1612 S	Wichita	8-5-93	4-20-17
					25+33	25+30.5	#545				7-30-17	
					25+58	25+55.5	#694	#646			9-18-17	11-14-18
					25+83.5	25+81						
26	104.40	98.92	5.48	26+12.3 FT.	26+06.5	26+04						

2003-00931-4/9/03-215 W Osie - Roto Rooter - 4" PVC, ITWINCO, 1H22, 1V45, shallow, City Tap 70.6' S of MH 19+82.5 (18+91.9) 4" Predco (NOTE: DID NOT DO PIPE BURST. (TRENCHED LINE TO DO REGULAR REPLACEMENT)

2003-00422 2/18/03 1700 S Wichita - Roto Rooter - Pipeburst Repl 4" PESDR17, 1V22, City wye repair - 4" Predco 76' S of MH 19+82.5 (19+06.5)

2003-00108 1/30/03 1727 S Water - Dutchmans - 4" PVC - ITWIN 90 No msmt

6768 - 1641 S - Water - Dennis - 2-20-68 - top (20+68.3)

#2753 - Tap - 205 W. Harry - 3-1-46 - Harley Riggs -

#5777 - Tap - 1732 S. Wichita - 9-12-51 - Jensen Plbg. Co.

93-9720-7 4/12/93 1637 S Water - 20+91.5 top - 4" PVC #40-115# N of MH in Osie Street
Replaced only last 6' of line in alley. (Concrete Alley Cut)

93-20686-7 2/15/93 1612 S. Wichita - Boardman