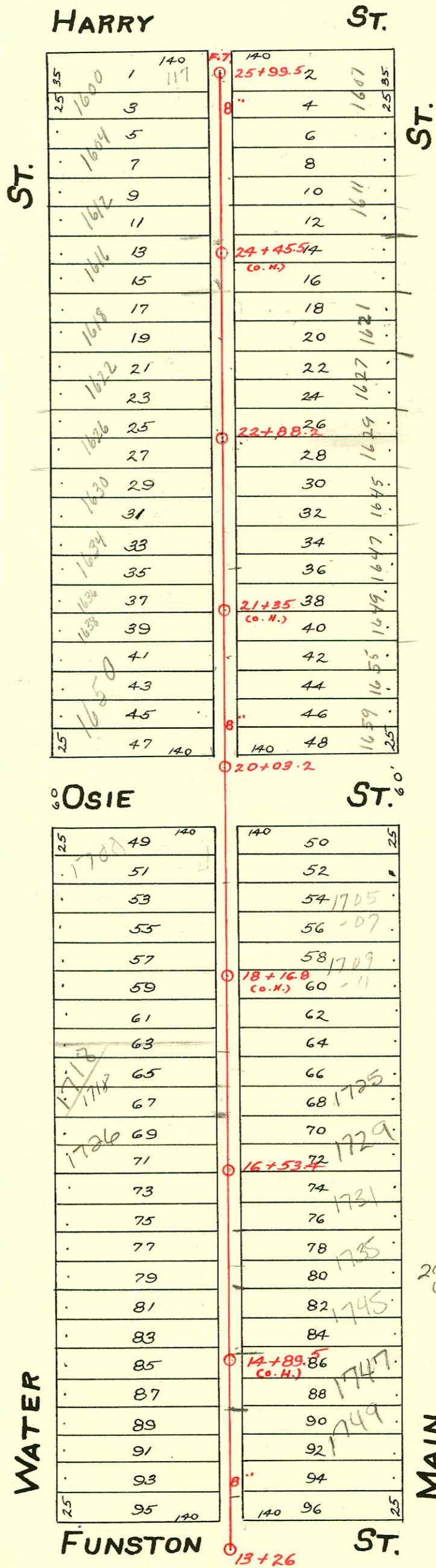
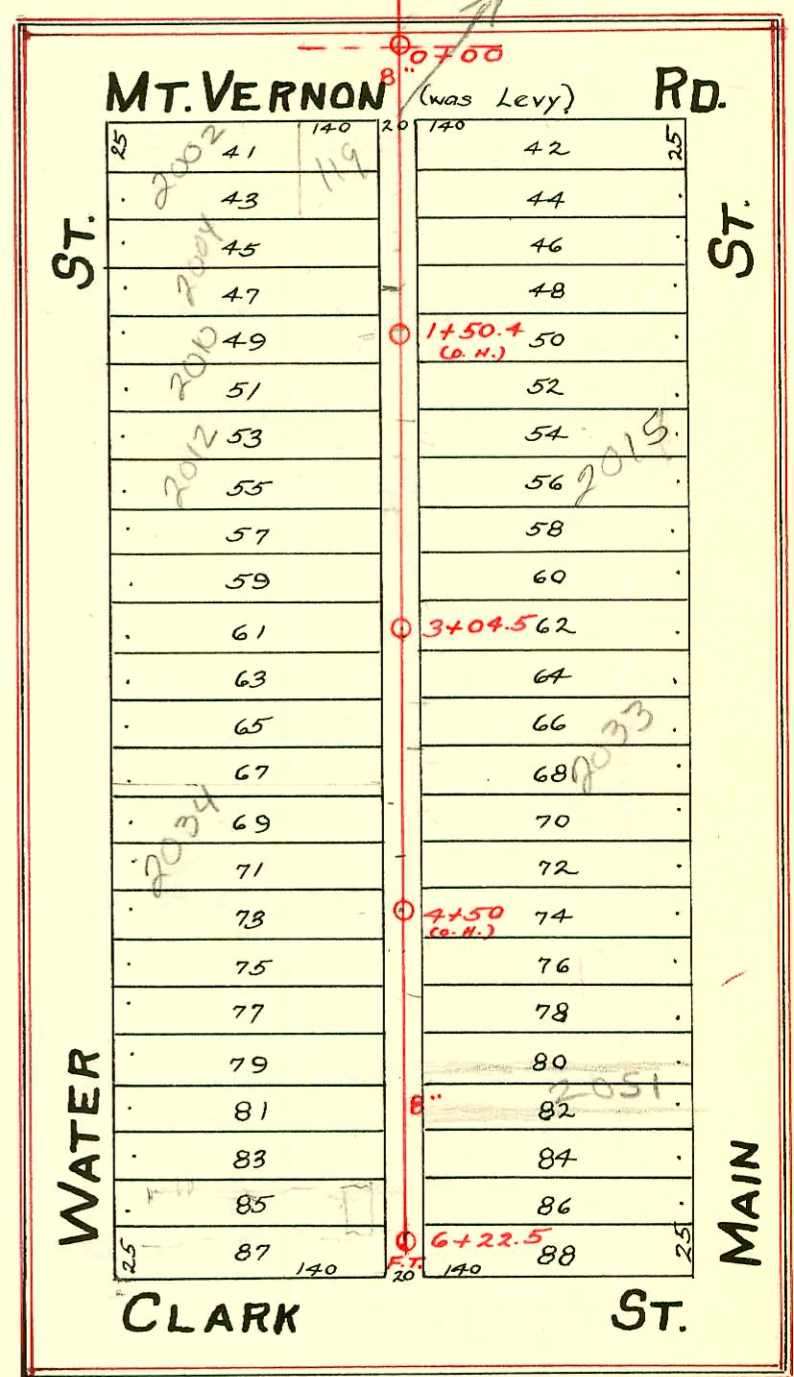


LAT. C - DIST. C - S.S. No. 20
1912



LAT. J - DIST. C
S.S. No. 20 - 1916



2006-00033, 119 W Mt Vernon; Olson SWR
US Sq. MH, (1) twin (2) 22u predec 1-5-00

- 2000-02731 - 12/18/00 - 1725 S. Main - Lubbers Exc - 4" SCH 40 - WYE repair - 83.7' N of MH 16+53.4 (17+37.1)
4" trap installed, ITWIN CO, 1045
- 2001-02043 - 8/16/01 - 1726 S Water - Overnight sucs - City Wye Repair - 4" Predec 19.5' N of MH 16+53.4 (16+72.9) ITWIN CO,
3H22, 1045, Alley cut.
- 2002-03413 - 1747 S Main - Royal Plog - 12/17/02 - 4" PVC - 2 Kickouts, 2 twin 45, 1-4" WYE, 2H45 tied to clay tile
- 2002-01379 - 1749 S Main - McClung - 5/16/02 - 4" PVC - Replaced 9' section from main out - 4" Wye repair
100.8' N of MH 13+26 (14+26.8) 1045, 1H45, 1H22
- 2004-03412 - 1746 S Water - Perry sewer service - 4" PVC, 4' clo @ house, (1) 45 man. (12-30-04)

CONSTRUCTION RECORD						SERVICE RECORD						
STATION	ELEVATION		Depth	MANHOLE	4-INCH "Y" BRANCHES		No. of Permit		House Number		DATE OF PERMITS	
	Ground	Grade			North West	South East	North West	South East	North West	South East	North West	South East
13	103.03	96.84	6.19	13+26								
					13+71.5	13+69		#1374				11-14-19
					13+96.5	13+94		#532	120.22			4-22-43
14	102.47	96.96	5.51		14+22	14+19.5	#531		W. Funston			4-23-43
					14+47	14+44.5	#40	#287	1756-58			1-10-13
					14+72	14+69.5	#7		S. Water			4-14-21
					14+97.5	14+95		#700		1745 S		1-7-13
15	101.55	97.08	4.47		15+23	15+20.5	#1057		main			3-28-16
					15+48	15+45.5		#110				8-21-22
					15+73	15+70.5	#110	#898	1736 S.	1747 S R	see next	10/17/02
					15+99	15+96.5			Water	main		8-20-29
16	101.97	97.20	4.77		16+24	16+21.5		#138		1731 S		2-26-20
					16+47	16+44.5	#663		1730 S.			6-21-28
					16+72.9	16+70	#156		Water R	see next pg		8-16-01
					16+98.5	16+96	#181		1726 S			9-7-22
					16+53.4	16+51	#178		Water			10-16-90
17	102.45	97.32	5.13		17+25.5	17+23		#750	1718 S			9-12-22
					17+51	17+48.5	17+37.1		Water			see next pg
					17+76.5	17+74			1725 S R			12-18-00
					17+99.5	17+97		#896	MAIN			10-5-20
18	103.67	97.44	6.23		18+02	18+24.5	#930					7-27-22
					18+27	18+24.5	#404			1709-11		10-4-21
					18+52.5	18+50	#103		S. Main			7-21-13
					18+78	18+75.5	#112					5-26-72
19	102.10	97.56	4.54		19+03.5	19+01	#12			1705-07		8-29-22
					19+29	19+26.5			S. Main			7-24-13
20	102.42	97.68	4.74	20+03.2	20+24.5	20+22	#1004	#1007				7-9-23
					20+49.5	20+47		#283				6-19-19
					20+75.5	20+73		#615				4-14-21
21	103.41	97.80	5.61		21+00.5	20+98	#97					3-27-16
					21+26	21+23.5						10-16-14
					21+57	21+48.5	#234	#593	1636 S			2-28-23
					21+76	21+73.5		#236	Water			6-1-22
22	103.21	97.92	5.29		22+01.5	21+99		#267				3-31-20
					22+26.5	22+24						5-13-13
					22+57.5	22+49						7-21-93
					22+88.2	22+81	#250	#14804	1626 S	1637 S		5-8-13
					22+96.5	22+94			Water	main		7-10-69
23	103.03	98.04	4.99		23+22	23+19.5	#118					7-11-68
					23+46	23+43.5	#146					8-22-19
					23+72	23+69.5		#500	1619 S	1621 S		3-12-13
24	104.24	98.16	6.08		24+00.5	23+98			Water	main		3-24-13
					24+27.5	24+25		#57				8-27-69
					24+52.5	24+50	#399	#505	1616 S R			6-11-17
					24+81	24+78.5	#509	#273	Water			5-24-90
25	104.36	98.28	6.08		25+05.5	25+03		#196		111 W.		11-8-12
					25+32	25+29.5	#615		Harry			5-9-17
					25+57.5	25+55	#502					3-15-26
					25+89.5	25+79.5		#416				12-31-12
	104.53	98.40	6.13	F.T.								11-4-12
0	101.38	95.25	6.13	0+00	0+46.5	0+44.0	#3	#745		115 W.		6-19-17
					0+72.3	0+69.8			Levy			1-3-22
					0+97.2	0+94.7						8-30-26
1	101.50	95.35	6.15		1+23.0	1+20.5	#254	#528	2006 S			4-2-20
					1+48.5	1+46.0			Water			12-11-16
					1+75.9	1+73.4		#548				7-30-17
					2+01.8	1+99.3	#130			2015 S		11-7-16
2	101.32	95.45	5.87		2+27.5	2+25	#893	#745	main			2-25-20
					2+52.5	2+50						10-11-17
					2+78.1	2+75.6						12-5-17
					2+95.8	2+93.3	#746					10-12-17
3	101.35	95.55	5.80	3+04.5	3+19.0	3+16.5						
					3+45.0	3+42.5		#1389				11-20-19
					3+69	3+66.5	#1503	#700	2033 R			9-15-20
					3+94.5	3+92.0			main			11-8-22
4	102.00	95.65	6.35		4+20.5	4+18	#129					
					4+45.5	4+43	#295		2034 S			12-28-21
					4+70.5	4+68	#758		Water			2-25-20
					4+96.5	4+94		#676				4-18-21
5	101.95	95.75	6.20		5+21.7	5+19.2	#759		2042 S			1-14-88
					5+47.7	5+45.2		#124	Water			9-13-26
					5+73.7	5+71.2	#795	#123				9-13-26
					5+96.7	5+94.2	#2170	#657	2044 S			9-13-26
6	102.05	95.85	6.20		6+14.5	6+12	#1225		Water			3-4-21
					6+22.5	6+20			100 W. Clark			5-10-19
												3-4-21
												4-20-48
												11-29-57
												12-9-21

#412- Tap- 40' S. of 20+03.2 - 5-15-21
 #1208- Tap- 12-5-21
 #412- Tap- 5-15-21
 #2021- Used old connection - 1650 S. Water - 10-14-49 - Carl E. Carr P1bg.
 #2123- " " " " - 1601 S. Main - 8-28-56 - Creekmora P1bg.
 #3409- Tap- 1601 S. Main - Don Hand, Jr. - 12-27-56 - wye 25+88.5 4" PVC 40- Alloy Cut
 #15190- Tap 1618 S. Water - al Henning - 2-14-60 (23+77.2)
 #C 7596- 117 W. Harry - Seal off - 3-27-68 - al Henning
 (conn. with 1600 S. Water (25+57.5))
 26001 - 1649 S. Main - 8-23-98 - repair (21+30.2)
 #24659 1-23-70 2034 S. Water - W. Bowles (Tap 4+37.5)