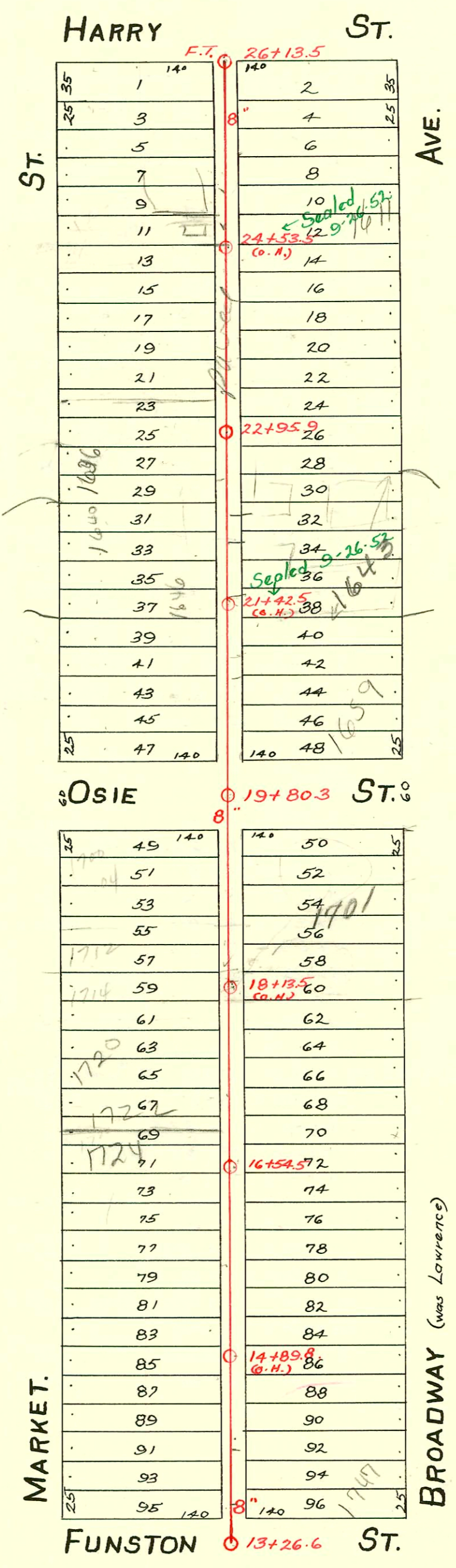


LAT. E-DIST. C-S.S. 20  
1912



SWF 2001-02594 10/18/61 1724 S Market Reddi Root: Partial Pipe Burst Just off 60' PE SDR17  
 10' from house, 2' from main - 4" Wye Repaired - 13' N of MH 16+54.5 (on msmt) Replaced entire line, 1H45, 1H72,  
 94-88797 6/10/94 1747 S. Broadway  
 92-223879 8/20/92 1722 S. Market<sup>SP</sup> Henning - 4" clay sp 244' S. of  
 a mt.

CONSTRUCTION RECORD						SERVICE RECORD						
STATION	ELEVATION		Depth	MANHOLE	4-INCH "Y" BRANCHES		No. of Permit		House Number		DATE OF PERMITS	
	Ground	Grade			North West	South East	North West	South East	North West	South East	North West	South East
13	102.84	96.27	6.57	13+26.6	13+63.5	13+61	#17		1747 S. Broadway		6-10-94-R	3-24-13
14	103.21	96.39	6.82		13+86.5	13+84	#349		1742 S. Market		5-4-20	
					14+12	14+09.5	#777	#23	1750 S. Market		7-19-28	1-5-20
					14+42	14+39.5	#1287		1742 S. Market		12-7-28	
					14+68	14+65.5	#184	#1094			3-2-28	7-24-19
					14+98	14+95.5						
15	103.39	96.51	6.88		15+21	15+18.5	#270				4-8-21	
					15+46	15+43.5	#349		1738 S. Market			6-21-13
					15+71.5	15+69	#170					3-9-20
					15+96.5	15+94						
16	103.13	96.63	6.50		16+22	16+19.5	#258				4-15-20	
				16+54.5	16+45	16+42.5	#4657		1724 S. Market	1701 S. Broadway		7-22-13
					16+67.5	16+65.3	#801				9-6-21	3-6-21
					16+90.5	16+88						11-7-91
17	103.07	96.75	6.32		17+15.5	17+13	#660		1724 S. Market		7-28-21	
					17+47	17+38.5	#670				12-13-20	
					17+66	17+63.5	#876		1716 S. Market		2-19-64	
					17+94.5	17+92	#650				11-19-29	
18	103.17	96.87	6.30		18+19.5	18+17			1701 S. Broadway			9/8/75
					18+44.5	18+42						
					18+70	18+67.5	#820		1704 S. Market		7-13-22	
					18+95.5	18+93	#334					3-6-23
19	103.16	96.99	6.17		19+21.5	19+19	#2494		1702 S. Market		7-12-40	
				19+80.3	19+44.5	19+42	#447		1657 S. Broadway			4-6-56
20	103.29	97.11	6.18		20+21	20+18.5	#3129	#1041	1660 S. Market		1-23-50	5-7-24
					20+49.5	20+47	#483		1657 S. Broadway			6-10-49
					20+74.5	20+72						
						20+98	#217					4-28-13
21	103.82	97.23	6.59		21+00.5							
					21+25.5	21+23	#11		1643 S. Broadway		1-11-21	
					21+51	21+48.5	#2709					9-29-52
					21+76.5	21+74						
						21+99	#433		1633 S. Broadway			4-29-25
22	103.82	97.35	6.47		22+01.5		#1155		1648 S. Market		8-9-49	
					22+27	22+24.5	#694					1-11-19
					22+52	22+49.5	#346	#1786	1631 S. Broadway		7-18-22	9-22-49
				22+95.9	22+77.5	22+75						
23	104.07	97.47	6.60		23+02.5	23+00	#414					7-25-18
					23+27.5	23+25	#150					
					23+53	23+50.5	#1047		1621 S. Broadway		3-26-17	9-23-25
					23+78.5	23+76						
24	104.13	97.59	6.54		24+04	24+01.5	#866		1620 S. Market		8-5-25	
					24+29.5	24+27	#84					3-20-16
					24+51.5	24+49						
					24+76	24+73.5	#9776	#2252	1611 S. Broadway		7-25-68	8-15-59
						24+99						4-22-40
25	104.36	97.71	6.65		25+01.5		#1099		Market		5-13-24	
					25+27	25+24.5	#6219		1605 S. Broadway			8-19-53
					25+52.5	25+50						
					25+77.5	25+75	#1087		211 E. Harry			7-23-23
26	104.76	97.83	6.93	26+135 FT.	26+04	26+01.5	#348		217 E. Harry			5-6-27

HC SWR2000-02171-1704 S market - Tap @ 132' S g mth, saddle, (1) twin clo, (2) 4SH, (1) 4SV - Central Air - 9/1/16

S/P SWR2000-02814 (1714 S market) - Central Air - 1/9/16

2002-00380-2113/22-1643 S. Broadway - A Good Plbr - 4" PVC40 Replaced all but lower 2' - Shallow - Existing 4" TWIN CO @ Bidg - Paved alley cut

264355-1739 S. Market - 12-7-97 - Ketcher & ...  
 #1277 - Tap - 1646 S. Market - 5-17-52 - Roy Yackley  
 #3073 - Tap - 1616 S. Market - 10-31-52 - Brodie Plbr.  
 #876 - Tap - 1614 S. Market - Lawhead - 8-17-28  
 #587 - Tap - 208 E. Funston - 5-21-29 - Simmons Plbr.  
 #1979 - Tap - 1621 S. Broadway - 2-21-49 - Callison Plbr.  
 #51 - Tap - 1616 S. Market - 4-21-49 - Coleman Plbr. Co.  
 #4374 - Used old connection - 1631 S. Broadway - 3-7-53 - Joe's Plbr. Co.  
 #1354 - Tap - 1700 S. Market - 7-5-56 - La Foy Plbr.  
 8885 Broadway - 1623 S. Broadway Lee Tade 12-23-58 24+36.5  
 12161 Traders first line connection 1623 S. Broadway Lee Tade 1-18-60  
 #20028-12488 - 1659 S. Broadway Coleman -  
 #1701 S. Broadway - New Bank Bldg -  
 Superseded by work m/s - (1616 S. Market) 4" PVC 40  
 #8886 - Traders 1623 S. Broadway Lee Tade 12-24-58