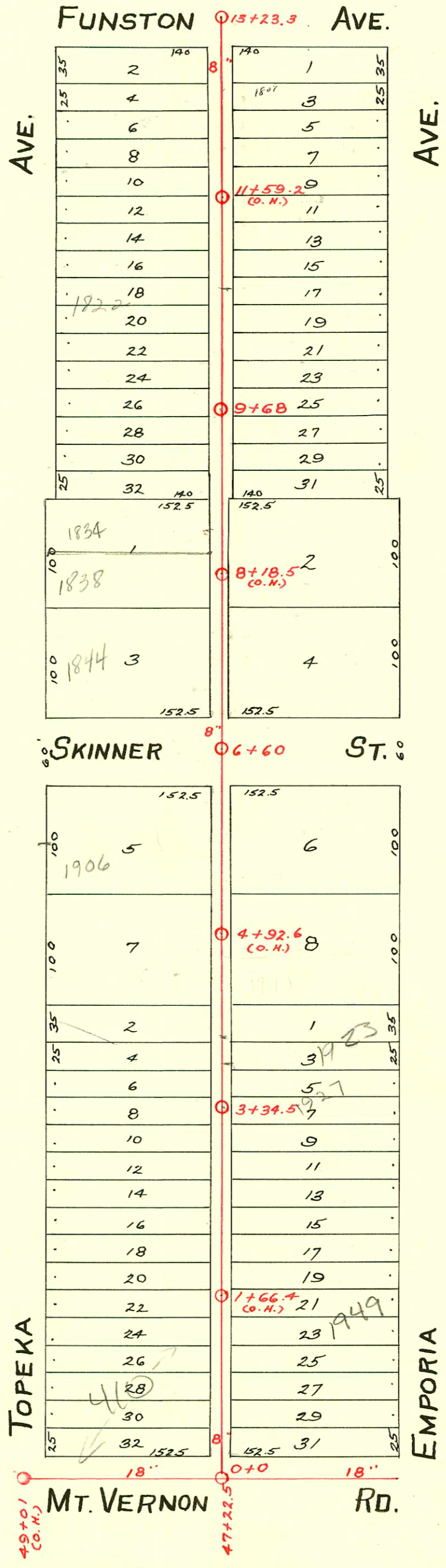


LAT. G. - DIST. C - S.S. No. 20  
1912



CONSTRUCTION RECORD							SERVICE RECORD					
STATION	ELEVATION		Depth	MANHOLE	4-INCH "Y" BRANCHES		No. of Permit		House Number		DATE OF PERMITS	
	Ground	Grade			North West	South East	North West	South East	North West	South East	North West	South East
46	103.38	93.58	9.80									
47	103.21	93.66	9.55									
	103.21	93.68	9.53	47+22.5								
48	103.21	93.74	9.47									
49	102.81	93.82	8.99	49+01 (G.H.)								
0	102.85	94.15	8.70	0+00	0+25	0+22.5	#1927	#331	410 Mt. Vernon	1949 S. Emporia	8-25-24	5-2-27
					0+51	0+48.5	C646					
					0+76	0+73.5	#838		1957 S. Topeka	1957 S. Emporia	7-13-49	1-3-23
					0+99	0+99	#513		1948 S. Topeka	1948 S. Emporia	11-4-41	
1	103.02	94.27	8.75		1+01.5							
					1+27	1+21.5	#1113		1948 S. Topeka	1953 S. Emporia	11-14-47	11-1-41
					1+49.5	1+47	#500		1944 S. Topeka	1943 S. Emporia	8-5-48	9-15-41
					1+74.5	1+72	#613	#97				
						1+97.5						
2	101.31	94.39	6.92		2+00							
					2+25	2+22.5	#642	#98	1938 S. Topeka	1937 S. Emporia	8-22-47	9-15-41
					2+50	2+47.5	#673		1934 S. Topeka	1933 S. Emporia	8-22-47	8-21-41
					2+75.5	2+73	#671					
						2+98		#414				
3	100.00	94.51	5.49		3+00.5							
				3+37.5	3+26	3+23.5	#640	#424	1928 S. Topeka	1927 S. Emporia	8-22-47	8-23-41
					3+52	3+49.5						
					3+76.5	3+74	#639	#3800	1922 S. Topeka	1923 S. Emporia	8-22-47	7-11-41
						3+99.5						
4	99.90	94.63	5.27		4+02							
					4+26	4+23.5						
					4+52.5	4+50	#656		1917 S. Emporia	1915 S. Emporia	8-25-47	11-20-45
					4+78	4+75.5	#2464					
5	100.11	94.75	5.36		5+03.5	5+01	#2194		1916 S. Topeka		8-15-52	
					5+28.5	5+26						
					5+53.5	5+51						
					5+78.5	5+76		#2463		1913 S. Emporia		11-20-45
6	100.14	94.87	5.27		6+04	6+01.5						
				6+60								
					6+99	6+96.5		#1119		1859 S. Emporia		11-14-47
7	99.94	94.99	4.98		7+24.5	7+22	#1292		1860 S. Topeka	1853 S. Emporia	12-2-25	11-7-46
					7+50.5	7+48		#901				
					7+75.5	7+73						
						7+99		#900		1849 S. Emporia		11-7-46
8	100.87	95.11	4.76		8+01.5							
					8+27	8+24.5	#185		1838 S. Topeka	1843 S. Emporia	3-12-26	11-7-46
					8+52	8+49.5	#133	#899			1-25-23	
					8+78.5	8+76						
9	101.27	95.23	6.04		9+03.5	9+01						
					9+29	9+26.5						
				9+68	9+54.5	9+52						
					9+77.5	9+75						
10	101.21	95.35	5.86		10+03	10+00.5	#1455				11-3-22	
					10+29	10+26.5	#278				4-6-22	
					10+54.5	10+52						
					10+80.5	10+78	#18	#155	1820 S. Topeka		3-28-33	9-7-22
11	101.45	95.47	5.98		11+04.5	11+02	#1475		1816 S. Topeka		10-15-29	
					11+32	11+29.5		#633				4-30-23
					11+55.5	11+53	#853		1812 S. Topeka		10-10-27	
					11+80	11+77.5		#1333				10-11-22
12	101.15	95.59	5.56		12+06	12+03.5						
					12+28.5	12+26	#1050				8-22-22	
					12+57	12+54.5		#1379		1807 S. Emporia		9-19-23
					12+80	12+77.5						
13	101.65	95.71	5.94	13+23.3								

#897 Tap at 9+61 - 1833 S. Emporia - 11-7-46 - Frederick Pibq.  
 #898 - Tap at 9+105 - 1839 S. Emporia - 11-7-46 - Frederick Pibq.  
 #1554 - Used old connection - 330 E. Harry - 9-9-49 - Brodie Pibq. Co.  
 #2971 - Tap - 423-25 E. Funston - 12-30-49 - Chas. W. Burgon.  
 #1802 - Tap - 1902 S. Topeka - 7-7-52 - Scotty Clark Pibq.  
 22096 #1803 - Tap - 1906 S. Topeka - 7-7-52 - Scotty Clark Pibq. - 11-28-88 - Repair - at Henry - Repair tap 116 S of 11th (5443,5)  
 #3328 - Tap - 308 E. Funston - 2-8-55 - Frederick Pibq.