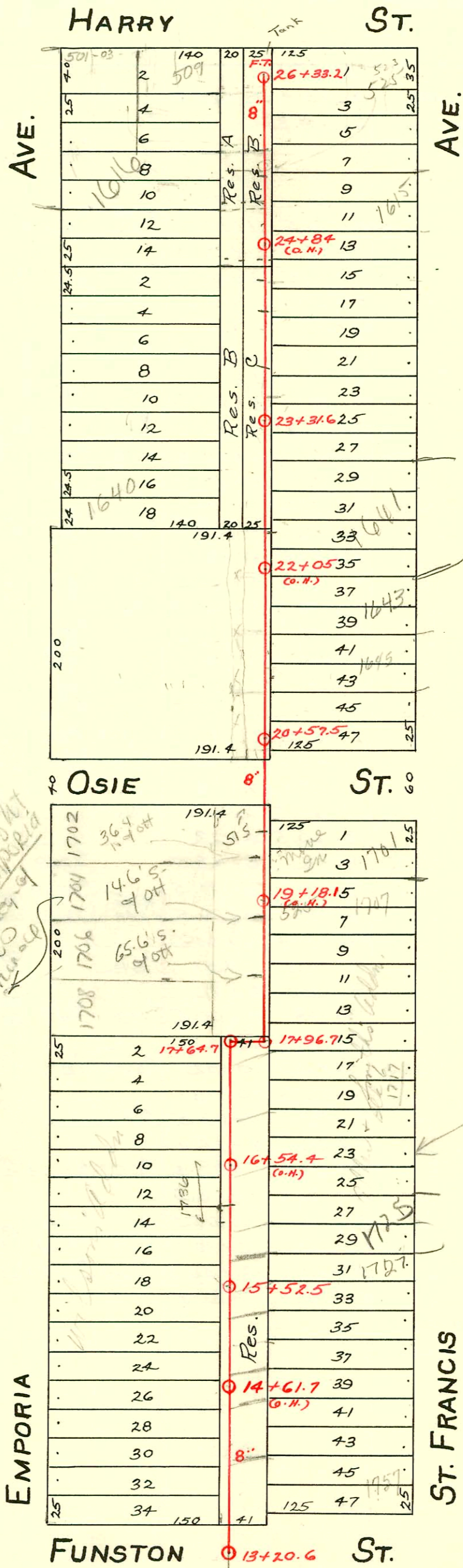


LAT. H - DIST. C - S.S. No. 20

1913



Ownership of S.S. No. 20  
 granted by the State  
 to Council of City of Emporia  
 and recorded with Key-Map  
 on 2/25/13. NO  
 specific area mentioned  
 3/26/13

Right-of-way 5' wide for constructing "Y" branch connections across Res. A, Strong & Rogers Addn. in line with the following lot lines extended across the said Reserve; the south lines of lots 2, 6, 10 & 14, Emporia Ave., Strong & Rogers Addn. Contracts for Reserves A & B \$10<sup>00</sup> Ord. 4610 Passed 9-6-12. Above includes Right-of-way for Lateral thru Res. B.

Right-of-ways 5' wide for constructing "Y" branch connections across Res. B, Koenig's Addn. in line with the following lines extended across said Reserve; The south line of lots 4, 8, 12 & 16, Emporia Ave., Koenig's Addn. Contract for Reserves B & C, Koenig's Addn. \$25<sup>00</sup> Ord 4610 Passed 9-16-12.

Right-of-ways for tract beginning at a point in the N. line of Osie St. 25' W. of S.E. Cor. Lot 16, Emporia Ave., Chase Addn. N. parallel with Emporia Ave 200' ± to S.W. Cor., Res. C, Koenig's Addn. W 15', S. 200' ± to Osie St., E. 15' to beginning.

Right-of-ways 5' wide for constructing "Y" branch connections along the east 40 ft. of the following lot lines: The North line of lots 16, 12, 8, 4, Emporia Ave., Chase Addn. Ord. 4610. Passed Sept. 16, 1912. Damage \$1<sup>00</sup>

Right of way condemned for Lateral on tract beginning at the N.E. cor. Lot 2, Emporia Ave, Wilson's Addn., thence N. parallel with Emporia Ave. 200' ± to Osie St., thence E. 15', thence S. 200' ± to N. line Reserve in Wilson's Addn. also -

Right-of-ways 5' wide condemned for "Y" branch connections across the following described tract: Beginning at the N.E. Cor. Lot 2, Emporia Ave., Wilson's Addn., thence N. parallel with Emporia Ave. 200' ± to Osie St., thence E. 41' to Allen & Smith's Addn., thence S. 200' ± to Res. in Wilson's Addn., thence W. 41' to beg. in line with the following lot lines extended across said tract: The N. line lots 13, 9 & 5, St. Francis Ave., BIK. 6, Allen & Smith's Addn. Contract \$15<sup>00</sup> Ord. 4610 - Passed Sept 16, 1912.

Right-of-ways 5' wide condemned for "Y" branch connections across Res. in Wilson's Addn. in line with the following lot lines extended across the said Reserve; the North line of lots 45, 41, 37, 33, 29, 25, 21 & 17, St. Francis Ave., BIK. 6, Allen & Smith's Addn. 41' X 425' Ord 4610 Passed Sept. 16, 1912 - Amount allowed \$30<sup>00</sup>

Also the W. 15' Res. in Wilson's Addn. for sewer lateral.

### CONSTRUCTION RECORD

### SERVICE RECORD

STATION	ELEVATION		Depth	MANHOLE	4-INCH "Y" BRANCHES		No. of Permit		House Number		DATE OF PERMITS	
	Ground	Grade			North West	South East	North West	South East	North West	South East	North West	South East
13	100.86	95.19	5.67	13+20.6	13+50.5	13+48	#1869		1760 S. Emporia	1757 S. St. Francis	10-3-39	
					13+75.5	13+73		#726				9-28-46
					13+96	13+93.5	#1870		1756 S. Emporia	1751 S. St. Francis	10-3-39	
14	100.52	95.31	5.21		14+21	14+18.5		#645				8-22-47
					14+47	14+44.5	#3261	#1	1750 S. Emporia	1745 S. St. Francis	4-1-41	11-10-42
					14+72	14+69.5						
					14+95.5	14+93	#3390	#679	1744 S. Emporia	1743 S. St. Francis	4-28-41	6-11-29
15	98.78	95.43	3.35		15+20.5	15+18						
					15+52.5	15+48.5						
					15+74	15+71.5	#3228	#58	1740 S. Emporia	1727 S. St. Francis	3-25-41	2-12-25
					15+96.5	15+94						
16	100.14	95.55	4.59		16+22	16+19.5	#3418		1736 S. Emporia		5-2-41	
					16+47	16+44.5						
					16+75.5	16+73	#3417	#1730	1728 S. Emporia	1725 S. St. Francis	5-2-41	7-28-24
					16+99.5	16+97		#1494		1723 S. St. Francis		2-21-47
17	101.98	95.67	6.31		17+23	17+20.5	#3333		1722 S. Emporia		4-17-41	
					17+48.5	17+46						
					17+64.7							
					17+96.7							
18	104.00	95.79	8.21		18+04.5	18+02 E		#1327	1708 S. Emporia			10-27-19
					18+27	18+24.5	09-03295					
					18+52.5	18+50	#511	#3683	1709 S. Emporia	1713 S. St. Francis	12-27-00	1-12-57
					18+78	18+75.5	#100999	#6	1704 S. Emporia	1705 S. St. Francis	3-26-07	1-15-35
19	104.58	95.91	8.67		19+03.5	19+01	#190				2-7-23	
					19+29	19+26.5						
					19+54.5	19+52.0	#403	23789	1702 S. Emporia	1701 S. St. Francis	3-22-23	8-23-89
					19+81.5	19+78						
20	104.22	96.05	8.17	20+57.5	20+41.5	20+39						
					20+66	20+63.5		#305				2-26-24
					20+91.5	20+89	#503				4-9-23	
21	104.22	96.17	8.05		21+16	21+13.5	#20588	#656	1652 S. Emporia		5-3-88	5-19-94
					21+40.5	21+38	#127	#623			6-2-47	4-27-23
					21+66.5	21+64						
					21+89.5	21+87						
22	103.75	96.29	7.46		22+15.5	22+13	#546		1640 S. Emporia	1641 S. St. Francis	4-17-23	12-24-01
					22+38.5	22+36	#929	#157			8-22-25	3-1-20
					22+66.5	22+64						
					22+90	22+87.5	#1088					11-7-21
23	103.48	96.41	7.07		23+17	23+14.5						
					23+31.6	23+42.5						
					23+52.5	23+50						
					23+78	23+75.5	#148	#571		1621 S. St. Francis	3-25-13	10-10-68
24	103.54	96.53	7.01		24+02.5	24+00	#10877	#657		1619 S. St. Francis		16-10-68
					24+25.5	24+23	#816		1618-20 S. Emporia		4-7-52	5-2-23
					24+51.5	24+49						
					24+76.5	24+74		#391				5-11-21
					24+99.5							
25	103.98	96.65	7.33		25+02		#2966		1622-24 S. Emporia	1615 S. St. Francis	11-2-50	3-2-69
					25+24	25+21.5	#503	#1376	1610 S. Emporia	525 E. Harry	8-30-46	11-15-19
					25+50	25+47.5	#114	#1164			2-17-22	10-12-48
					25+78	25+75.5						
					25+99							
26	103.93	96.77	7.16		26+01.5			#90				3-1-13
					26+16.5	26+14						
					26+26.5	26+24						
	103.98	96.81	7.17	26+33.2	F.T.							

2003-00799-312663-1704 S Emporia - Wichita Exc - 4" PVC Replentireline - 1445, 3422, 1700, 1-1/2", 1445, 1022, CITY WYE  
 repair 4" Piped 106.8' N of Mt 17476.7 (19403.5)  
 2002-02630-1717 S St Francis - 9/24/02 - Roto Rooter - 4" PVC, 1445, 1700 - NO MSMT

C13482-527 E. Harry - 4-9-69 - Ref. Roberton. Pllg - 2 wye, 25+21.5  
 C4732-509 E. Harry (addr) 9-6-67 - Joe Spaulding - top (26+17.8)

#669 - ConBwye - 1620 S. Emporia - 4-19-54 - Joe McDonald  
 #2680 - Top - 523 E. Harry - 2-8-46 - Chester Davidson.  
 #2887 - Top - 1633 S. St. Francis - 4-1-46 - J.N. Hanna.  
 #640 - Top - 509 E. Harry - 9-10-46 - Davidson Pllg.  
 #1163 - Top - 523 E. Harry - 10-12-48 - Joe's Pllg. Co.  
 #4235 - Top - 523 E. Harry - 3-30-51 - Frederick Pllg. Co.  
 #3295 - Top - 515-17 E. Osie - 2-2-55 - Frederick Pllg. Co. (19+78)  
 #2934 - Top - 515 E. Osie - 12-27-49 - Frederick Pllg. Co. (?)  
 #4415 - Top - 518 E. Funston - 3-11-53 - R. La Foy  
 5277 top 1757 S. St. Francis 9-12-57 Spaulding

94-199781 11-23-96 1616 S. Emporia 25+65.2  
 94-19415-7 11-30-94 1616 S. Emporia 25+49-4" NW