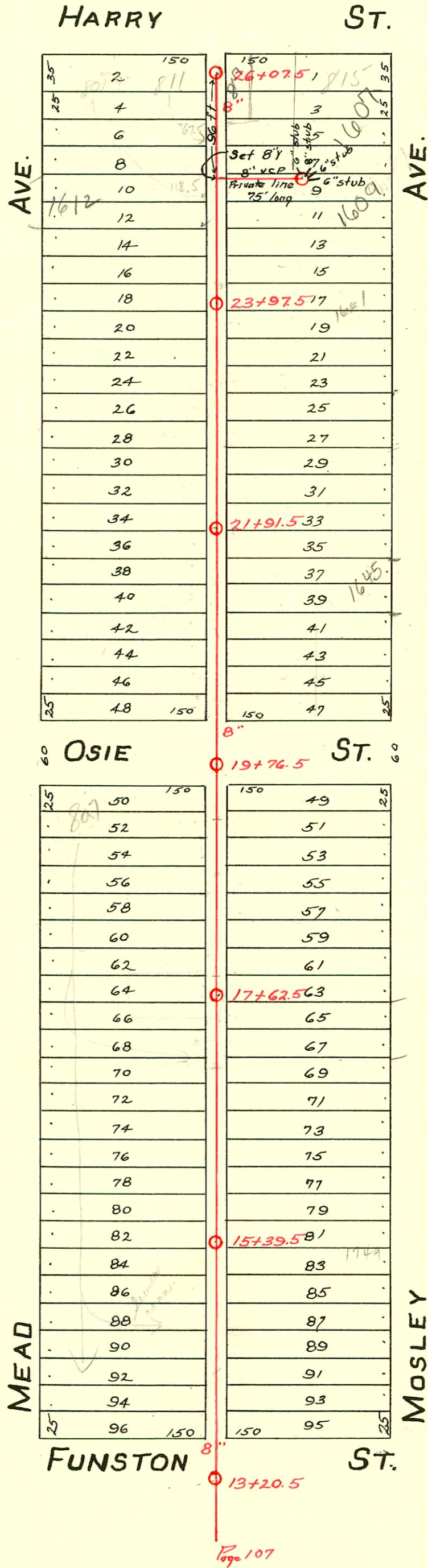


L A T. 5 · DIST. C · S.S. No. 20
1923



Private line 96' So. of M.H. 26+07.5 East 75'
Grade is 4 1/2' at M.H. - 6 1/2' at wye in City Sewer.
Constructed April 21, 1948 - W.B. Carter.

CONSTRUCTION RECORD

SERVICE RECORD

STATION	ELEVATION		Depth	MANHOLE	4-INCH "Y" BRANCHES		No. of Permit		House Number		DATE OF PERMITS		
	Ground	Grade			North West	South East	North West	South East	North West	South East	North West	South East	
13+0	104.17	95.44	8.73	13+20.5	13+50	13+52.5	#581		808 E. Furston		5-10-65		
					13+74.6	13+77.1	C42375	#670	1757 S. Mosley		5-19-39		
					14+00.3	14+02.8	#3646		807 E. Harry		11-26-73	7-2-30	
14+0	104.62	95.59	9.03	14+25.4	14+27.9	14+20.5	#6168	#338	1748 S. Mead	1755 S. Mosley	10-19-51	4-27-26	
					14+76.6	14+79.1	C64658	#1147	807 E. Harry	1753 S. Mosley	12-29-77	12-29-27	
15+0	104.39	95.74	8.65	15+39.5	15+27.7	15+01.8		#1657	1749 S. Mosley			11-21-29	
					15+53.7	15+56.2							
16+0	104.62	95.89	8.73	16+04	16+06.5	16+78.6	16+81.1	#68	1725 S. Mosley		2-18-69	2-2-26	
					16+29.3	16+31.8							
					16+54.8	16+57.3		#32	1728 S. Mosley			1-18-26	
					16+79.7	16+82.2							
17+0	104.77	96.03	8.74	17+04.8	17+07.3	17+62.5	17+30.4	17+32.9			8-3-61		
					17+56	17+58.5		#4452	1717 S. Mosley			4-24-51	
					17+81	17+83.5							
18+0	104.01	96.18	7.83	18+06.6	18+09.1	18+31.5	18+34	18+57.4	18+59.9	18+82.8	18+85.3	18+07.6	19+10.1
					19+07.6	19+10.1	C62659	#4451	815 E. Harry	1711 S. Mosley	8-25-77	4-24-51	
					19+33.2	19+35.7		#11	1707 S. Mosley			1-6-26	
19+0	104.04	96.33	7.71	19+76.5	19+33.2	19+35.7	19+37.2	19+39.7	19+41.2	19+43.7	19+46.2	19+48.7	19+51.2
					20+34	20+36.5	#26	#853	807 E. Harry	1659 S. Mosley	10-19-45	3-13-78	7-11-29
20+0	103.87	96.48	7.39	20+34	20+36.5	20+60	20+62.5	20+85.5	20+88	21+10.6	21+13.1	21+36.6	21+39.1
					21+10.6	21+13.1							
21+0	104.29	96.63	7.66	21+36.6	21+39.1	21+91.5	21+62	21+64.5	21+84.7	21+87.2	22+10	22+12.5	22+35.5
					21+62	21+64.5							
22+0	104.70	96.78	7.92	22+10	22+12.5	22+35.5	22+38	22+61.2	22+63.7	22+86.7	22+89.2	23+12	23+14.5
					22+35.5	22+38							
23+0	104.52	96.93	7.59	23+12	23+14.5	23+37.4	23+39.9	23+97.5	23+63.2	23+65.7	23+86.3	23+88.8	24+11.8
					23+37.4	23+39.9							
					23+63.2	23+65.7	#359	#1265	1618 S. Mead	1619 S. Mosley	7-5-46	1-2-82	8-21-81
24+0	104.18	97.08	7.10	24+11.8	24+14.3	24+37.4	24+39.9	24+63	24+65.5	24+89	24+91.5	25+14.1	25+16.6
					24+11.8	24+14.3	#63	#1256	1612 S. Mead	801 E. Harry	7-10-34	11-19-25	11-24-25
					24+37.4	24+39.9		#1276	1612 S. Mead	801 E. Harry	5-13-69	8-4-26	
25+0	103.82	97.23	6.59	25+14.1	25+16.6	25+40	25+42.5	25+65.8	25+68.3	25+91.3	25+93.8	26+07.5	26+10.0
					25+40	25+42.5	#2203	#353	811 E. Harry	815 E. Harry	9-29-24	4-10-28	
26+0	103.92	97.38	6.54	26+07.5	26+10.0	26+34	26+36.5	26+60	26+62.5	26+85.5	26+88	27+10.6	27+13.1
					26+34	26+36.5							
26+075	103.92	97.39	6.53	26+07.5	26+10.0	26+34	26+36.5	26+60	26+62.5	26+85.5	26+88	27+10.6	27+13.1

19776.5

97-74671 S-247 1634 S. Mead (includes pretreatment add) -
 95-157907 105-95 1607 S. Mosley - Henning - S/O in, MH on Private Line

Only 3 seal off. were required for 807 E. Harry - C42375, 42379 + 42380 - 11/26/73 by Al Henning
 C28947 - 809 E. Harry - 11-11-71 - (26+62.8)
 B4283 - 807 E. Harry - 10-6-65
 C14072 - 1618 S. Mead - 5-13-69 - Top (24+97.9)
 #6052 - Top - 1634 S. Mead - 8-5-53 - Joe McDonald
 #217 - Top - 1609 S. Mosley - 4-23-31 - Miller & Cherry Pibq. Co.
 #2650 - Top - 807 E. Harry - 2-4-46 - Davidson Pibq. Co. - 11-26-73 - Al Henning (18+42.5)
 #358 - Top - 1618 S. Mead - 7-5-46 - J.N. Hanna
 #2171 - Private line connection - 1607 S. Mosley - 4-21-48 - W.B. Carter
 #1488 - Private line - 825 E. Harry - 11-11-48 - Howard F. Cowan
 #3318 - Top - 807 E. Harry - 11-24-52 - Art Prosser
 14986 - Top - 807 E. Harry - 11-28-61 - Ken Appoldt (17+77.5)
 S/O 16485 - by 807 E. Harry - 12-18-62 - Fred Pibq (19+08.5) - C42379 - 11-26-73 - Henning
 97-74671 B949 - Top - 1634 S. Mead - 3-3-64 - Ray Brock (21+76.5)
 B950 - Top - 1634 S. Mead - 3-3-64 - Ray Brock (22+30.5)