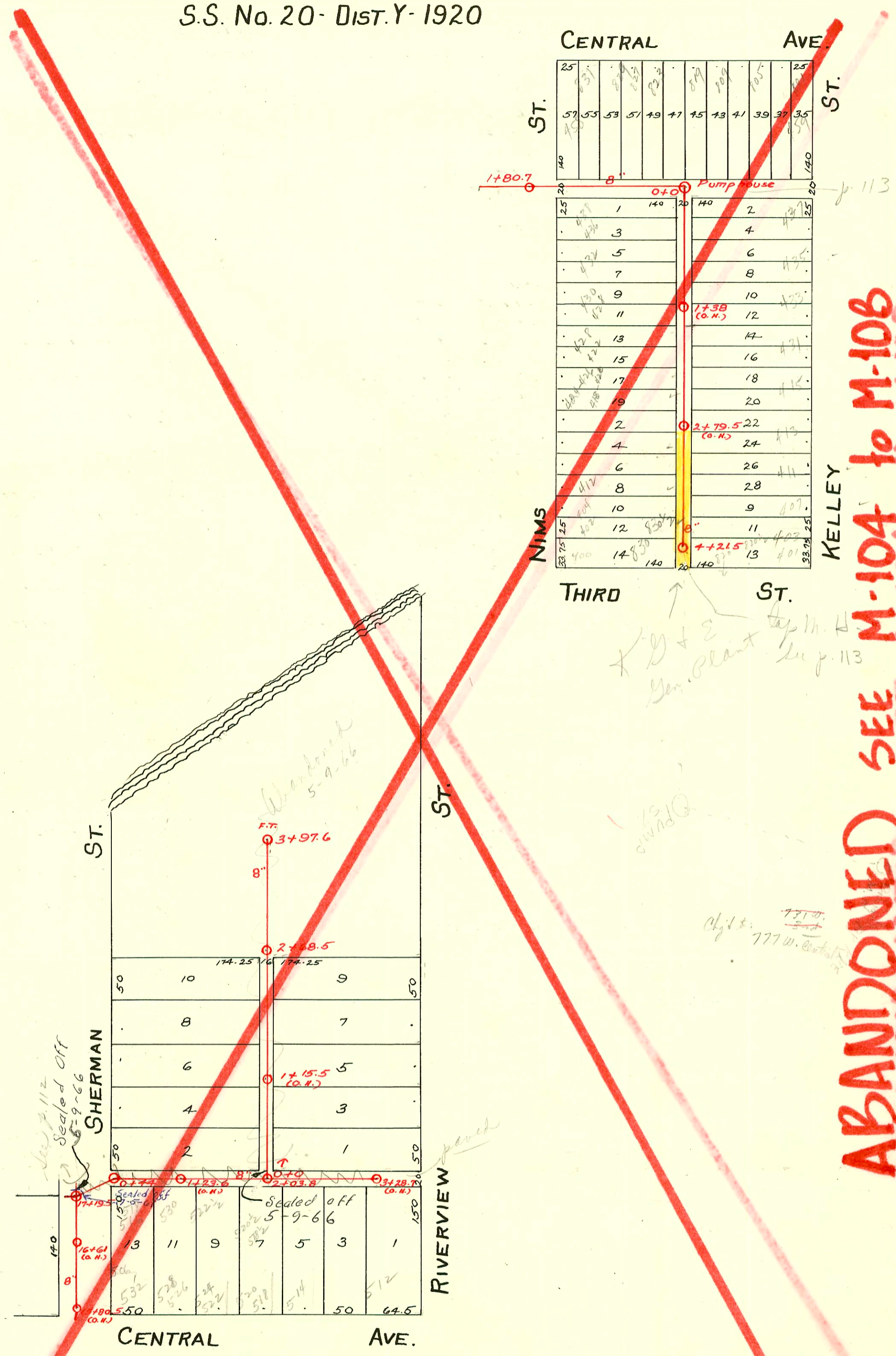


S.S. No. 9-1909
S.S. No. 20-DIST. Y-1920



ABANDONED
SEE M-104 to M-108
SEE M-104 to M-108
SEE SEE

Permit # C17788 - 777 N. Central - Kendall Inc. - (add'n) 10' E. of S.W. cor. of S.W. cor. of Bldg. - 5' so. to exist line)
 777 W Central
 Permit # C16433 - 731 #1, 3 (KGE) - Dep. Robinson & Co. - 10-23-69 (6" top pris. M.H. on KGE property)
 #C16934 seal off - 729 W. 3rd - Al Henning - 11-17-69 pris. line (sealed approx. 60' E. of M.H.) Laboratory
 #C16935 seal off - 729 W. 3rd - Al Henning - 11-17-69 pris. line (sealed on M.H.)

