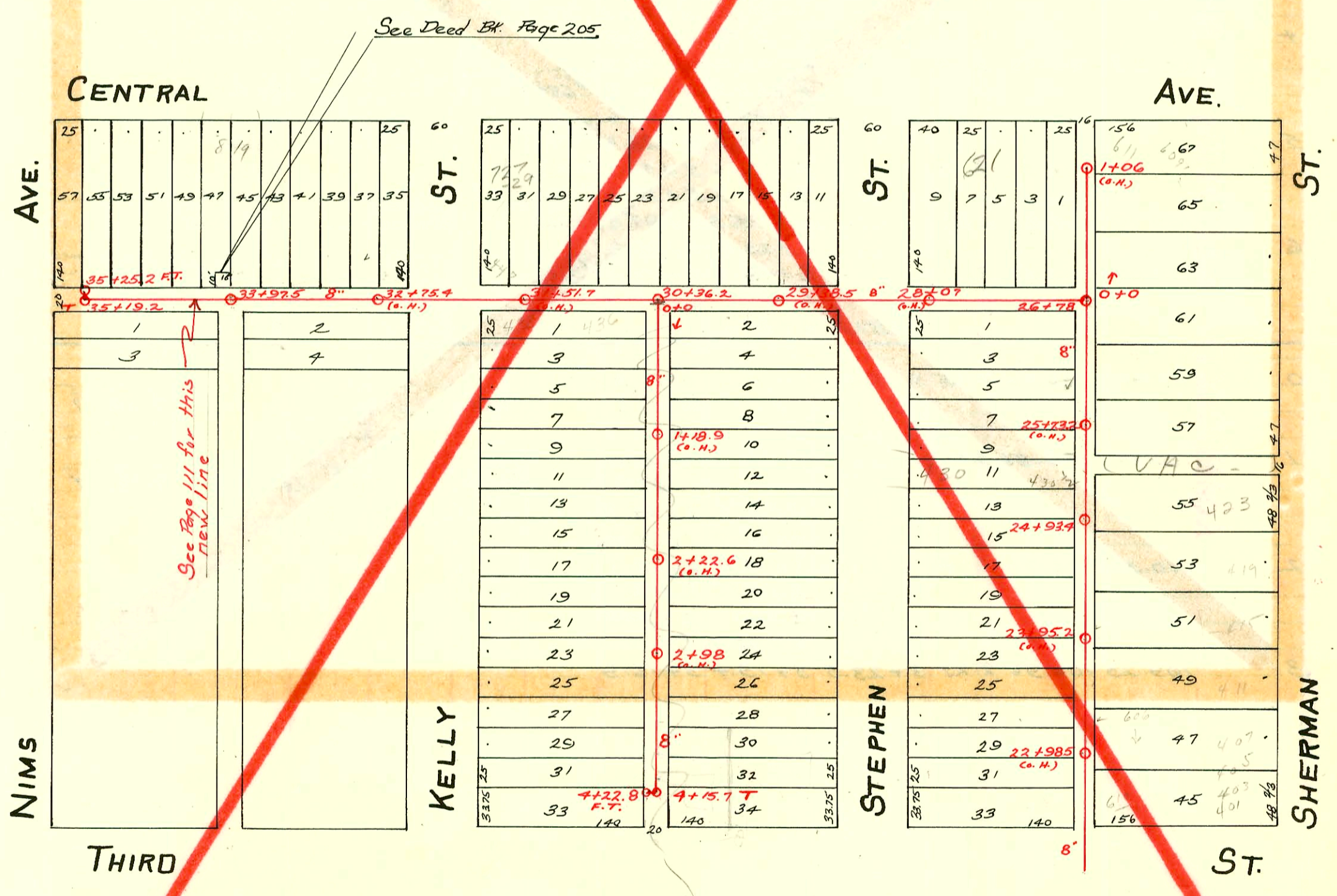


S.S. No. 9-1909  
LAT. A - DIST. 9-1915  
DIST. Y - S.S. No. 20-1920



ABANDONED - SEE M-104 to M-108

CONSTRUCTION RECORD

SERVICE RECORD

STATION	ELEVATION		Depth	MANHOLE	4-INCH "Y" BRANCHES		No. of Permit		House Number		DATE OF PERMITS	
	Ground	Grade			North West	South East	North West	South East	North West	South East	North West	South East
4	111.70	110.13	1.57	4 + 22.8 FT. 4 + 15.7 Tee.	4 + 08.5	4 + 06	#1377		720 W. 3RD		2-2-44	
					3 + 87.5	3 + 85	#60	#90			3-2-18	2-17-14
					3 + 64	3 + 61.5	#396	#509			12-13-15	
					3 + 38	3 + 35.5	#58	#773				9-6-10
3	112.80	109.93	2.87	3 + 12	3 + 09.5	#58	#773				3-18-12	12-23-09
					2 + 82.5	2 + 80		#352				6-12-14
					2 + 58.5	2 + 56	#545				6-14-11	
					2 + 32.5	2 + 30	#5708	#38	422 1/2 Kelly		8-29-51	2-8-15
2	113.90	109.73	4.17	2 + 06.5	2 + 04	#375					12-1-15	
					1 + 80.5	1 + 78	#161	#394			3-30-17	4-28-11
					1 + 55	1 + 52.5	#176				3-27-14	
					1 + 27.5	1 + 25						
1	113.60	109.53	4.07	1 + 01								
						0 + 98.5	#515					10-22-15
					0 + 75.5	0 + 73	#665	#832 1/2	436 Kelly		7-27-66	11-13-17
					0 + 24	0 + 49	#998				6-16-19	
0				0 + 0								
1	113.37	109.16	4.21	1 + 06 (O.H.)	1 + 00		#117		611 W. Central		2-18-20	
					0 + 66	0 + 52	#378		609 W. Central		7-6-67	
						0 + 29		#617	445 Sherman		1-30-09	11-12-13
0				0 + 0			#320				6-1-09	
35		109.89		35 + 25.2 FT. 35 + 19.2 Tee	35 + 16.5	35 + 06.2	#41	#117			2-6-11	3-3-14
					34 + 87							
					34 + 72.5	34 + 77	#95	#18			3-16-09	1-13-14
					34 + 46.5							
34		109.79		33 + 97.5	33 + 90.5		#172		819 W. Central		9-28-65	
					33 + 74.5		#239				4-20-10	
					33 + 46		#90				4-2-12	
33	111.88	109.69	2.19		33 + 15.5		#96				3-16-09	
32	112.44	109.59	2.85		32 + 66		#557				9-3-09	
					31 + 72							
					31 + 54		#562		440 Kelly		7-6-67	
					31 + 27		#72				11-15-15	
31	113.54	109.49	4.05		31 + 01		#570				3-26-10	
					30 + 77.5						8-7-17	
30	113.14	109.39	3.75	30 + 36.2	30 + 52		#997				6-16-19	
					30 + 23		#784				4-11-24	
					29 + 98.5		#358		713 W. Central		4-11-28	
					29 + 74							
					29 + 49		#606		709-11 W. Central		9-6-67	
29	113.64	109.29	4.35		29 + 22	29 + 32	#101	#25B			11-16-10	
28	113.54	109.19	4.35		28 + 97		#700		631 W. Central		3-19-09	5-6-09
					27 + 79		#46		621 W. Central		12-20-10	
					27 + 53						2-25-09	
27	113.44	109.09	4.35		27 + 30							
					26 + 78	26 + 73		#718				8-17-11
					26 + 28.5	26 + 26	#585				6-26-11	
26	113.46	108.99	4.47		26 + 05.5	26 + 03	#591	#779	432 Stephens		11-5-29	12-28-09
					25 + 79.5	25 + 77						
					25 + 70		#305				6-6-13	
					25 + 52	25 + 61	#774	#115			9-19-11	3-23-15
					25 + 27							
25	113.36	108.89	4.47		25 + 01.5		#753				12-1-09	
					24 + 93.4	24 + 99		#5648		423 Sherman		11-8-67
					24 + 75.5	24 + 73	#913	#766			11-7-17	12-10-09
					24 + 49.5	24 + 47						
					24 + 22.5	24 + 20	#216				4-13-10	
24	113.61	108.79	4.82		24 + 00.5			#767				12-10-09
					23 + 98		#1017				6-24-19	
					23 + 70	23 + 72.5	#306				5-25-10	
					23 + 45	23 + 47.5						
23	113.61	108.69	4.92		23 + 19	23 + 21.5	#406	4142	606 W. 3RD		9-5-12	2-17-53
					22 + 94	22 + 96.5	#1394				6-13-24	
					22 + 68	22 + 70.5		#56				2-25-09
22	111.73	108.59	3.14		22 + 43	22 + 45.5	#4126		610 W. 3RD		2-16-53	
21	See Page 110											

ABANDONED SEE M.104 to M.108

This changed - See Page 111 for new line

#1395 - 622 W. 3RD - Connect to private line built by W.A. B. Hrich - from wye 22+94 - 6-13-24  
 Tap #515 - 438 Kelly - 5-19-30 - J.E. Lonsdowne - Sealoff #1244 - 438 Kelly - 12/16/66  
 Tap #705 - 606 W. 3RD - 6-11-43 - Dermody Pkg. Co.  
 #5903 - Tap - 438 1/2 Kelly - 9-25-51 - Harry Mann.  
 #5059 - Tap - 401 Sherman - 5-4-53 - Callison Pkg. Co.  
 K. G. & E. Plant - 3RD & Kelly - W. B. Carter Const. Co. - 3-29-56 - Rec. # 38293 - Special Fe # 25 re Pd.  
 K. G. & E. Plant - 3RD & Kelly - W. B. Carter Const. Co. - 3-29-56 - Tap - into M.H. 4+21.5 - #374. - See page 111  
 9106 - 405 W. 3RD - 1-15-59 - 23+54.5  
 5616 - 417 W. Central - Sealoff - Al Henning - 11-7-67