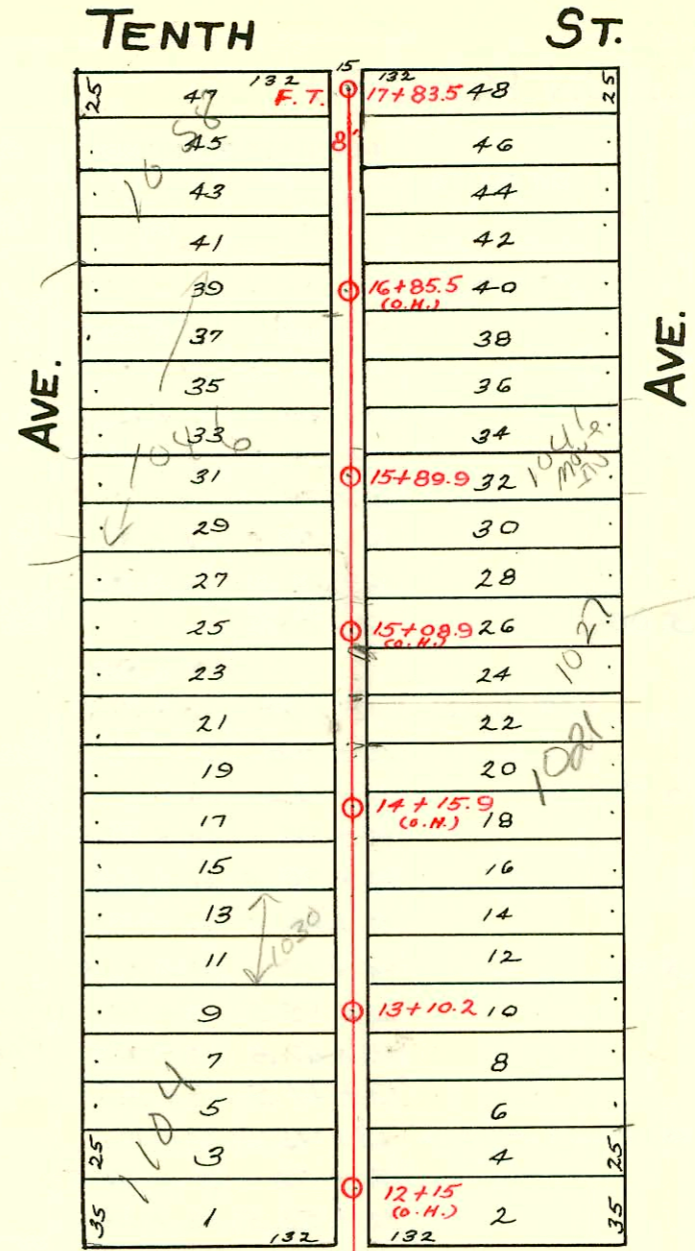
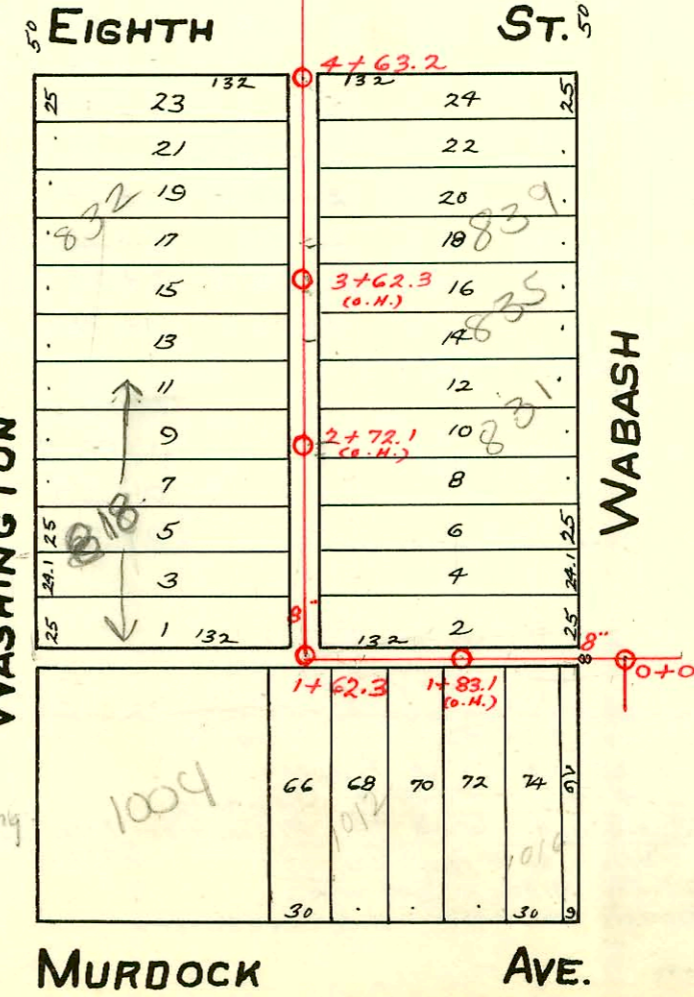
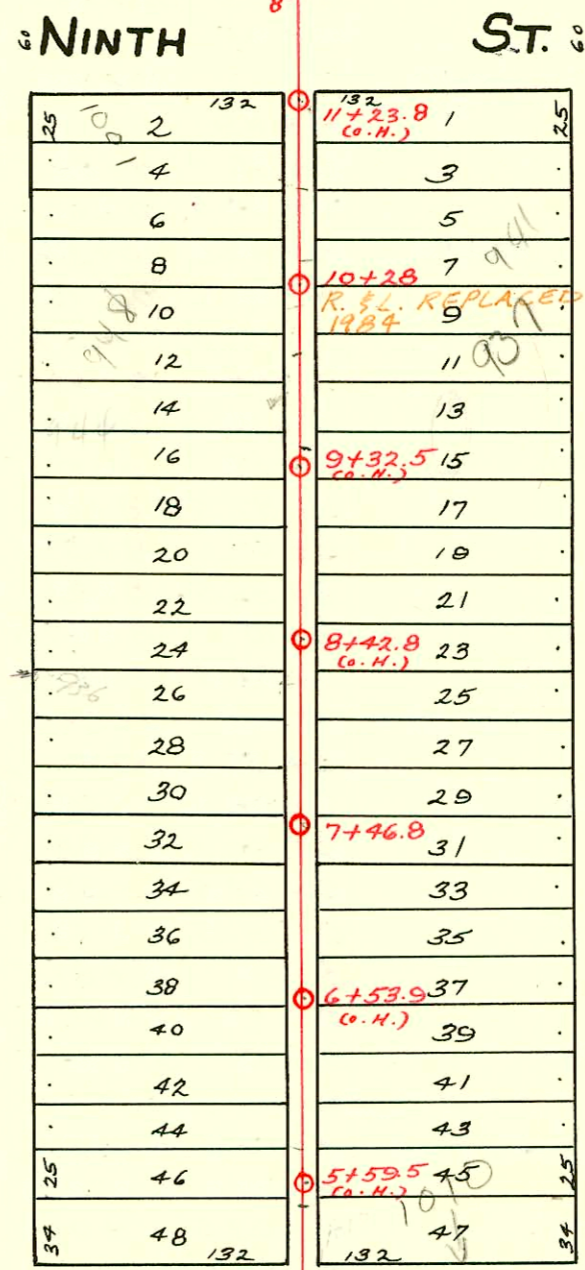


S.S. No. 16 - 1910  
 DIST. Y-S.S. No. 20 - 1920



1027 N Wabash  
 MORRIS City house  
 NO EQUITY Issues due  
 MUST have CURRENT Bldg  
 PERMIT PRIOR to ISSUING  
 permit  
 52996  
 BK

**TRAP AREA**



2003-03116 12/10/03 818 N Washington  
 The GGL Co 1V45, Running trap (4-45-V)  
 Predco by city 5.6' N of MH 1762.3 (1767.9)  
 (DL broke main - city repaired main +  
 made new tap)

2003-02419 - Bob Scott Plug  
 510 1104 Wabash 9/17/03 - 310 clay to  
 concrete 73' N of MH (33' N of curb)  
 on lot (epl) not in alley

SWR 2001-00431 2/27/01 - 1046 N Washington  
 (Bldg Remodel - add with city Todd Hwy: 4" PVC City  
 Tap Predco 119' S of MH 17+83.5 (16+64.5) trap installed  
 ITWIN-co, 1/1/45

# 25367 - 5/8/190 1043 N Wabash - (house is no  
 fear of 1041 - maybe 1041 1/2 originally) - AL Henning  
 (56' 13" N. and 12' from Main.)

#93-95177 - 933 Wabash - R - 4/23 - 4" ABS 40 - Replaced upper 22' - 1/4" of shallow

### CONSTRUCTION RECORD

### SERVICE RECORD

STATION	ELEVATION		Depth	MANHOLE	4-INCH "Y" BRANCHES		No. of Permit		House Number		DATE OF PERMITS	
	Ground	Grade			North West	South East	North West	South East	North West	South East	North West	South East
				17+83.5 FT.	17+76.5	17+74	#199	#298	1056 N. Washington	1061 1/2 Wabash	3-12-25	2-28-23
					17+55.5	17+53		#2428	1058 N. Washington	1053 Wabash	9-8-52	9-8-52
					17+29.5	17+27	#96	#739	1053 N. Washington	1053 Wabash	12-5-41	12-5-41
17	114.62	109.97	4.65		17+04	17+01.5						
					16+80.5	16+78						
					16+55	16+52.5	#2482	#7	1048 N. Washington	1045 Wabash	11-4-24	2-3-81
					16+28.5	16+26						2-2-57
16	114.42	109.87	4.55		16+06	16+03.5						82092
				15+89.9	15+79	15+76.5			1041 Wabash			6-9-50
					15+53	15+50.5			1041 Wabash			9-16-98
					15+27	15+24.5	#5105	#4591	1030 N. Washington	1035 Wabash	11-10-94	2-17-48
15	113.62	109.77	3.85		15+01.5	14+99			1035 Wabash			5-8-51
					14+75.5	14+73			1035 Wabash			7-16-41
					14+52	14+49.5			1035 Wabash			5-6-24
					14+26.5	14+24	#128		1024 Washington		9-17-24	3-22-54
14	113.72	109.67	4.05		14+00.5	13+98			1018 N. Washington			7-25-83
					13+75	13+72.5	#2436				10-28-24	11-1-16
					13+52	13+49.5						
13	113.02	109.57	3.45	13+10.2	13+26	13+23.5	#295	#295	1009 N. Washington	1009 Wabash	9-17-03	7-11-16
					12+99.5	12+97	#550		1009 N. Washington	1009 Wabash	5-17-76	2-13-76
					12+76.5	12+74					5-21-25	2-23-76
					12+51	12+48.5						11-5-23
					12+25.5	12+23						
12	113.02	109.47	3.55		12+00	11+97.5						
11	112.47	109.37	3.10		11+15	11+13.5						
					10+95.5	10+93	#1913	#344	1015 E. Washington		12-27-23	6-6-14
					10+70	10+67.5	#118				12-14-33	
				10+28	10+41.5	10+39						6-18-14
10	112.47	109.27	3.20		10+15	10+12.5	#2484	#484	945 N. Washington	937 Wabash	10-16-89	3-31-54
					9+92	9+89.5	#2173	#484	944 N. Washington		9-23-24	7-13-17
					9+68.5	9+66	#125				11-15-21	
					9+42.5	9+40						5-5-14
9	113.07	109.17	3.90		9+17	9+14.5	#2630		938 N. Washington		12-1-24	
					8+91.5	8+89						5-29-19
					8+66	8+63.5						5-19-41
					8+40.5	8+38						11-5-23
8	113.97	109.07	4.90		8+17.5	8+15	#339	#339	936 N. Washington		4-6-25	5-18-76
					7+92	7+89.5						5-4-23
				7+46.8	7+66.5	7+64						11-5-23
					7+36	7+33.5						
7	113.97	108.97	5.00		7+11	7+08.5						
					6+85.5	6+83						6-21-23
					6+59	6+56.5						8-16-23
					6+33.5	6+31	#1184		908 N. Washington		12-17-70	11-24-72
6	113.87	108.87	5.00		6+08.5	6+06					10-28-25	3-7-28
					5+82.5	5+80						3-18-24
					5+57	5+54.5						2-24-21
5	113.17	108.77	4.40		5+31	5+28.5						
				4+63.2	4+55	4+52.5						
					4+29.5	4+27	#262	#175	834 N. Washington		3-24-25	4-7-13
4	113.27	108.67	4.60		4+03.5	4+01	#878	#878	832 N. Washington		9-10-89	10-17-27
					3+78	3+75.5	#677				6-24-25	12-11-89
					3+52	3+49.5	#971	#595	830 N. Washington	835 Wabash	9-2-25	5-22-29
					3+26.5	3+24	#2000		830 N. Washington		7-26-52	
3	112.17	108.57	3.60		3+00.5	2+98	19245		828 N. Washington		10-6-87	5-21-90
					2+77.5	2+75	#574					4-19-23
					2+52	2+49.5	#2717				12-16-24	
					2+26	2+23.5	#1721	#550	837 Wabash		12-14-22	6-25-26
2	111.97	108.47	3.50		2+00.5	1+98	#179	#802	833 Wabash		10-13-86	11-2-17
					1+72.5				816 N. Washington		3-22-50	
				1+62.3		1+59						
						1+30.5						12-27-22
1	112.75	108.37	4.38		0+89	0+74	#557				10-9-13	
						0+51.5	#809	#42170	1016 E. Wabash		4-3-19	11-8-73
						0+27.5						
0	113.15	108.27	4.88	0+00								

R- 93-009517 - 9331 Wabash - James 4-27-93  
 C53857 - 1016-18 Wabash - 2-23-96  
 C32721 - 725 1/2 Wabash - Goloff - 8-1-82  
 19243- #608 Private line - 835 Wabash - Long Pibg. Co. - 5-25-29  
 #43 - 826 N. Washington - 6-1-34 - Vernon Stollenberger - Used old connection. 10-6-87 - Sealed off 4' from wye and 66' of mtl 1+62.3  
 #18 - Top - 1000 N. Washington - 10-26-34 - C. Frank McCoy  
 #2526 - Top - 944 N. Masley - 12-12-45 - C. Frank McCoy  
 #2663 - Top - 1012 E. 9th - 2-5-46 - C. Frank McCoy  
 24324 - #674 - 6" on 8" wye - 941 Wabash - 18-76-53 - Art Prosser - Hanging - (10+39)  
 #1538 - 6" on 8" wye - 1046 N. Washington - 7-21-54 - Reynolds Pibg.  
 19244 - #3093 - Top - 828 N. Washington - 11-11-50 - Baker Pibg. Co. 10-6-87 - Sealed off 4' from wye and 116' N of mtl 1+62.3  
 #3110 - Top - 1003 E. 9th - 11-3-52 - Frederick Pibg. Co.  
 #2010 - Top - 1041 1/2 Wabash - 7-28-52 - Joe McDonald  
 #5726 - Top - 1001 1/2 E. 9th - 7-6-53 - J. Douglas Lansdowne Pibg.  
 #4252 - 6" on 8" wye - 1010 E. Eighth - Reynolds Pibg. - 4-3-57 - (5+46.2)