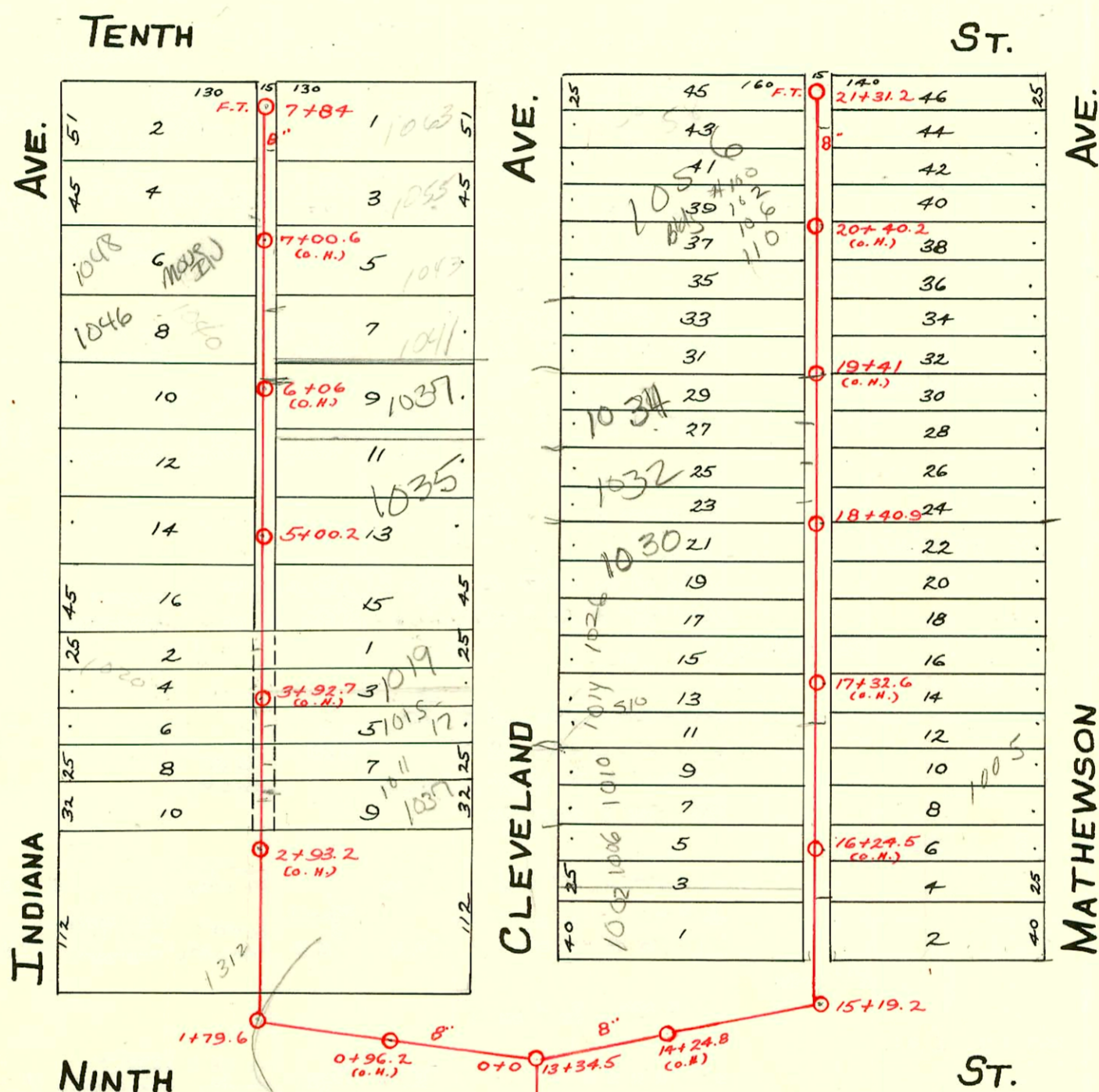


S.S. No. 16-1910
 DIST. Y- S.S. No. 20-1920

TRAP AREA



Easement #511
 E. 7 1/2' of lots 2, 4, 6, 8 & 10.
 Easement #508 W. 7 1/2' of lots 7 & 9.

Site Hold
 4-10-96
 Require P&Y
 Permit

- N/C SWR2006-00100 - 21106 1014 N Cleveland - 212' N 8" MH, (1) twin clo, trap, (1) 22v, Predco saddle
- N/C SWR2002-02893 - 10/23/02 - 1037 N Cleveland - WYE - 12 1/4" NOF MH 5100.12 (6+21.2)
 1-6x4 Reducer, 2TWIN CO, 1H22, 2H45, Running trap
- N/C SWR 2002-02895 - 10/23/02 - 1032 N Cleveland Wichita Ex. City wye repair 16.4' N of
 MH 18+40.9 (18+57.3) Predco Saddle, 4" 40 PVC, 2TWIN CO, 1V22, 5V45, 3H22, 2H45 - repl entire line
- N/C SWR 2002-02896 - 10/23/02 - 1034 N Cleveland: Wichita Ex. City wye repair 16" Predco
 (6x4) 65' N of MH 18+40.9 (17+05.9), 4" 40 PVC - 2TWIN CO, 2V22, 2H22, 4V45, 1H45

CONSTRUCTION RECORD

SERVICE RECORD

STATION	ELEVATION		Depth	MANHOLE	4-INCH "Y" BRANCHES		No. of Permit		House Number		DATE OF PERMITS			
	Ground	Grade			North West	South East	North West	South East	North West	South East	North West	South East	North West	South East
	114.35	111.39	2.96	7+84 FT.	7+79.5	7+77.0	#2255	#253	1060 Indiana		12-4-70	2-23-23		
7	114.15	111.31	2.84		7+54	7+51.5	#3206	#479	1048 S. Indiana		5-24-89	8-29-13		
6	114.65	111.21	3.44		6+52.5	6+50	#165	#432	1045 Cleveland		4-8-18	7-21-10		
5	114.45	111.11	3.34	5+00.2	6+04	6+01.5	#181	#181	1040 N. Indiana	102751 Cleveland	10-4-83	3-21-73		
4	114.95	111.01	3.94		5+55.5	5+53.0	#9361	#384	1026 Indiana	102550 Cleveland	6-2-26	3-15-79		
					5+09.5	5+07.0	#455	#205	1028 Indiana	101772 Cleveland	8-21-46	11-28-11		
					4+64.5	4+62.0	#544	#896	1028 Indiana	1023 Cleveland	12-3-70	4-20-25		
					4+29.0	4+26.5	#1262	#396	1028 Indiana	1023 Cleveland	8-24-23			
					3+97.5	3+78.0	#18744	#605	1017-15 Cleveland			7-19-93		
					3+55	3+52.5	#1183	#6923	1014 Cleveland (Rear)		8-9-23	9-9-69		
3	114.95	110.91	4.04		3+34.5	3+29	#1896	#3129	1012 Indiana	1007 Cleveland	12-24-23	12-26-89		
					3+09	3+06.5	#24513	#1305	1004 Indiana	1004 Cleveland	7-30-74	2-18-41		
					2+67.5	2+57.5	#45975	#292	1004 Indiana	1004 Cleveland	9-4-23	5-29-13		
2	114.85	110.81	4.04		2+32	2+29.5	#1344	#344	1004 Indiana	1004 Cleveland	9-11-23			
1	113.95	110.71	3.24	1+79.6	2+09	2+06.5	#341	#262	1312 E. 9th		6-8-31	6-4-12		
0	113.95	110.61	3.34	0+00.0										

	115.21	111.42	3.79	21+31.2 FT.	21+25.9	21+23.4	#2538	#2628	1056 S. Cleveland	1055 Mathewson	5-21-90	11-30-49
21	115.21	111.38	3.83		21+10.4	21+07.9	#529	#2946	1052 Cleveland		12-29-49	11-23-14
					20+87.4	20+84.9						
					20+59.9	20+62.4						
					20+33.9	20+31.4						
				20+40.2 (o.H.)								
20	114.81	111.28	3.53		20+08.9	20+06.4	#661				12-2-18	
					19+83.4	19+80.9			1036 Cleveland		1-4-95	8-24-27
					19+57.9	19+55.4	#715					
					19+39.4	19+29.9						
19	114.71	111.18	3.53	City Rep	19+07.4	19+04.9	#2896	#3638	1036 Cleveland	1041 Mathewson	10-23-07	10-31-28
					18+81.9	18+79.4	#87	#1160			1-19-23	10-31-28
					18+57.4	18+54.9	#929		1032 Cleveland		8-1-22	
					18+40.9	18+34.9	#2829	#105	1035 Cleveland	1045 Mathewson	10-20-03	2-24-30
18	114.41	111.08	3.33	City Rep	18+06.9	18+04.4	#696	#7024	1030 N. Cleveland		5-2-03	9-19-17
					17+80.9	17+78.4	#1272		1422 E. 9th		12-21-21	1-12-52
					17+55.9	17+53.4						
					17+30.9	17+28.4			1422 E. 9th			2-17-47
17	114.51	110.98	3.53		17+04.9	17+02.4	#405		1014 Cleveland		8-5-97	9-5-12
					16+79.4	16+76.9						
					16+54.4	16+51.9						
					16+28.9	16+26.4	#154				1-29-23	
16	114.61	110.88	3.73		16+02.9	16+00.4	#865	#95	1006 S. Cleveland	1005 R. Mathewson	5-2-03	9-27-34
					15+85.4	15+82.9	#360				9-15-23	
15	113.61	110.78	2.83	15+19.2	15+59.9	15+57.4						

Phyllis Wheatley Home

2003-02830-10/30/03-1035 N Cleveland - N/C - Cummings + Fitzsimmons - 2H22, 1H45 4" 40 PVC, 1-Running trap (4-45) (Twinco, 2V45, City tap 4" Predco 10' N of MH 5+00.2 (5+10.2))

2003-01185-5/2/03-1010 N Cleveland Bob Scott P/bg - concrete in clay No msmt

2002-00814-3/22/02-1034 S Cleveland AE Henning - slow with concrete even with SPL

2002-00546-2/28/02 1046 N Indiana - Roto-Rooter 4" SCH 40 ITWINCO

2001-02675-10/19 N Cleveland 10/24/01 - Adams Custom P/bg - 4" SCH 40 261' N of MH 77.6 (4+40.6) Twinco, Trap, Tied back to clay tile aprx 15' from main

95-7154-7 6-2-95 1048 N Indiana - Move IN house - 4" PVC 40 TAP 6797.3

C 46315-1053 Mathewson - 8-22-74 Seal off - ad Henning (20+12.4)

Tap - 2+19 - #830 - 11-9-20.
Tap - 1007 Mathewson - #615 - 7-20-27 - Nelson P/bg.
Tap - #719 - 1050 Indiana - 6-17-29 - Simmons P/bg.
Tap - #72 - 1312 E. 9th - 8-8-34 - Arthur Hoff.

2002-00818 #16 - 6" on 8" wye - 1037 Cleveland - 2-3-54 - Phipps P/bg - AE Henning 4 1/2" of SPL
#17 - Setting wye - 1318 E. 9th - 2-17-54 - Theodore Jones - Seal off
#107 - 6" on 8" wye - 1011 Cleveland - 12-27-55 - Thompson P/bg. Co.

#16886 - seal off P/L's Trenching + Seal
Serv. a. 4-26-03 at 1030 Indiana
95-16711-7 10-18-15
93-24981-7 9-27-93 1014 N Cleveland - Reconnected (slow increase)
6" PVC 40 Repl 2' of line at main
#92-00004-7 - 1042 Cleveland - Sealed off at Alley 41 Feet North of a Manhole