

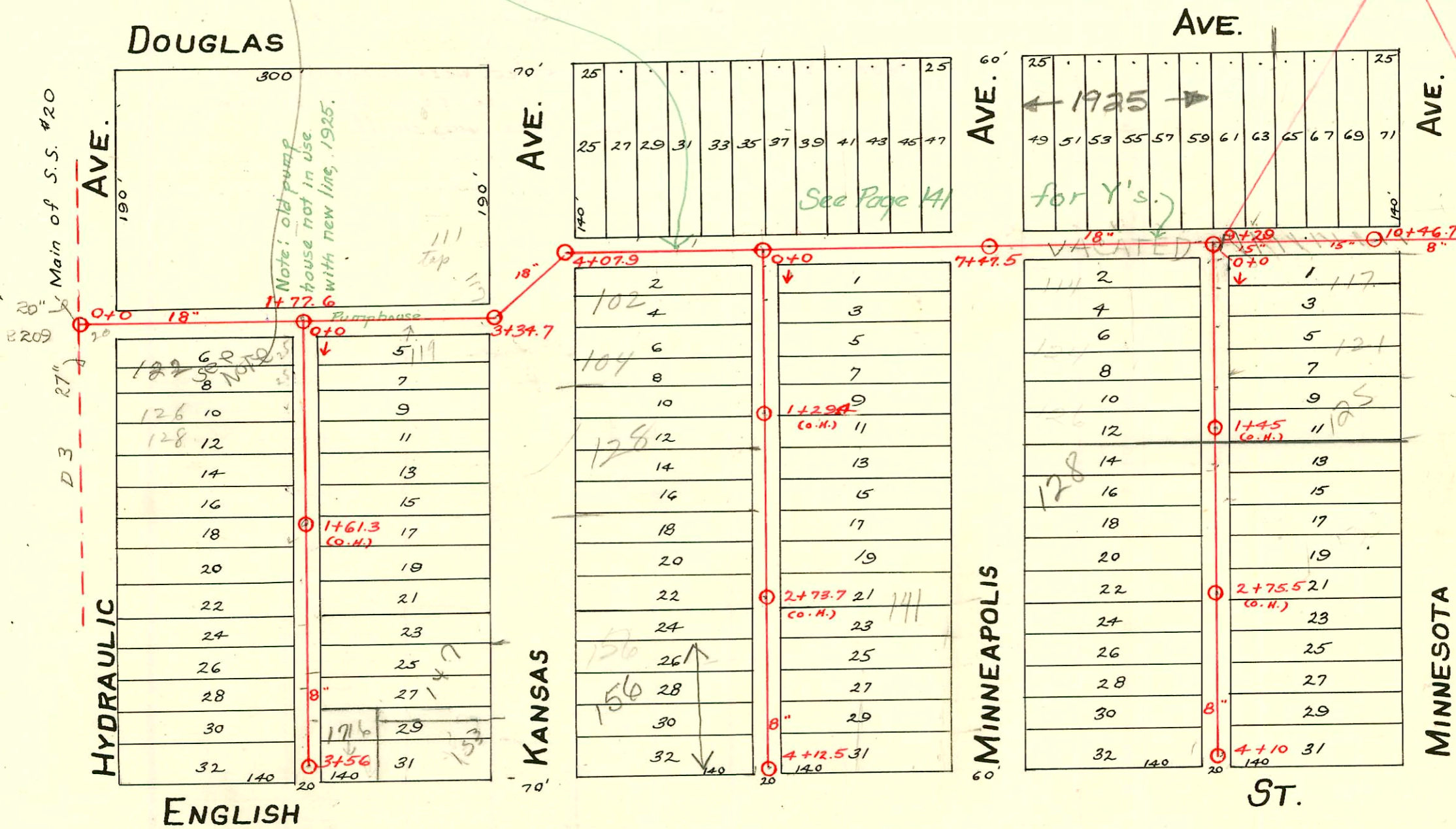
DIST. K- S.S. No. 20- 1914

122 S. Hydraulic  
 Advise P.H. he must contact  
 Sewer Maint. Dept. in advance  
 to have crew on site when  
 he does repair. Also notify  
 Cal will fight when sewer  
 permit is issued. Also notify  
 BSK

**TRAP AREA**

LAT. 1-Dist. K-S.S. No. 20 in alley South of  
 Douglas from sta. 0+0 to 10+46.7 built 1925 by H.L. Miles.  
 replaces old line, built in 1914, now dead. For info. on old line  
 See old BK- Page 139.

Abandoned  
 1-35-W



SWR2000-02077-133 S Minnesota - repair - 53' 5 3/4" dia - 4" sch 40 Pk, (1) 45' (1) 22' - AE Henning 9-13-00

# 26967 - 1-30-91 132 S. Hydraulic - Henning (sealed 187.5' is of MH)

# 93-56057 - 2/22/93 - 104 S Kansas - R 2540 - McClung - 4" PVC 40 - 44' w/c - repaired - 54' 5"  
 - 1/4" pf shallow - replaced entire line - dirt alley road

440

CONSTRUCTION RECORD

SERVICE RECORD

STATION	ELEVATION		Depth	MANHOLE	4-INCH "Y" BRANCHES		No. of Permit		House Number		DATE OF PERMITS	
	Ground	Grade			North West	South East	North West	South East	North West	South East	North West	South East
0	109.34	101.84	7.50	0+0								
					0+13							
					0+38.5	0+36	#332	#828	124 S. Minneapolis	117 S. Minneapolis	3-12-71	2-1-67
					0+66.5	0+64					9-8-14	11-5-20
					0+92	0+89.5						
1	108.44	102.04	6.40		1+17	1+14.5	#424		126 S. Minneapolis	21 S. Minneapolis	5-12-75	2-1-67
					1+43	1+40.5	#406		122 S. Minneapolis		7-3-14	7-13-18
					1+79	1+76.5	#407	#407	130 S. Minneapolis		7-3-14	6-18-17
2	107.27	102.24	5.03		2+12	2+09	#423				7-11-14	
					2+37	2+34.5			132 S. Minneapolis		7-11-14	
					2+63	2+58.5	#425					
					2+88	2+85.5						
3	107.64	102.44	5.20		3+08.5	3+11	#408	#928	136 S. Minneapolis	141 S. Minneapolis	7-3-14	11-1-26
					3+33.5	3+36		#965	N.E. Corner English			11-7-27
					3+58.5	3+61	#144	#806	1920 E. English		4-21-16	9-22-26
					3+82	3+84.5		#126				2-6-24
4	107.14	102.64	4.50	4+10								
0	108.72	101.49	7.23	0+0	0+12	0+14.5	#392	#296	115 S. Minneapolis		6-27-14	4-8-46
					0+37	0+39.5	#125		102 S. Kansas		3-14-31	
					0+61	0+63.5	#391	#396	119 S. Minneapolis		6-26-14	6-27-14
					0+84.5	0+87					4-29-70	
1	109.03	101.69	7.34		1+09.5	1+12	#401	#964	127 S. Minneapolis		7-2-14	11-9-26
					1+65	1+57.5		#416	135 S. Minneapolis			7-9-14
					1+88	1+94						
2	109.35	101.89	7.46		2+15.5	2+18	#814	#1495	138 S. Kansas		7-22-25	10-10-23
					2+41	2+43.5						
					2+67	2+69.5	#792	#300	142 S. Kansas		9-19-27	5-16-17
					2+92							
3	107.99	102.09	5.90		3+17.5	3+20		#2066	145 S. Minneapolis			9-11-24
					3+42.5	3+45	200300816		See below			
					3+73	3+77.5	#9800	#767	156 S. Kansas	1816 E. English	3-27-03	7-17-28
4	106.47	102.29	4.18		4+01	4+03						
	107.52	102.32	5.20	4+12.5								
0		101.0		0+0	0+17		#21664		122 S. Hydraulic		11-6-70	
					0+44.5	0+42						
					0+68	0+65.5	#685				6-19-22	
					0+93	0+90.5		#1234	121 S. Kansas			11-12-25
1	109.68	101.2	8.48		1+18.5	1+16	#227	#683			5-12-15	11-18-14
					1+12.0	1+72	#366		130 S. Hydraulic		8-26-76	
					1+67.5	1+65	#366		136 S. Hydraulic		7-28-15	
					1+85.0	1+87.5	#197				10-1-72	5-20-16
2					2+14.5	2+12.5		#198	#706	141 Kansas	5-20-16	9-21-17
					2+44.5	2+42						
					2+73	2+70.5		#199	140 Hydraulic		5-20-16	
					2+95.5							
3	109.50	101.60	7.90		3+19			#383				6-25-14
					3+46			#384				6-25-14
					3+56							

2003-00816-3127103-156 S Kansas - Overnight Svcs - 4"40 PVC, 1twineo, Newhouse trap, 1422, 1422, 48' N of MH 4+12.5 (3+64.5)  
 City wire repair - 6' Predeo  
 8-7-79 1716 E English - 3+21  
 -2000-01110 53-2000 147 N Kansas - Reddi Kwik (repl. appx 6' of pipe Sch 40 PVC. LHO  
 appears to be 87' N of MH) 4" PVC 40-TWINEO  
 McCullough slow concrete 132.5 of MH 5' from main  
 2-003 01302 5-14-03 Red 510  
 97-8885-7 6-3-97 125 S. Minnesota - Reduct TX wire rep at 132' S of MH 1000  
 4" SCH 40 PVC TWINEO

15453-137 S Minnesota - 1-14-66 Jerry Boardman 4+10.0 71-2+64.0 146.0 N of MH  
 C-5948 122 S Kansas 15-11-75 (1+60.1)  
 C-51930-128 S Kansas 10-10-75 (1+06) Al Henning 10-27-61 (1000MH 58'S - 56)  
 #727-Top - N.E. Corner - Kansas & English - 7-18-30 - H.W. Coldren.  
 #66-Top - S.W. Corner - Douglas & Kansas - 3-19-36 - Moore-Robertson  
 #689-Top - 1901 E. Douglas - 1-31-38 - Plummer & Skinnell - De Coursey Co.  
 #2071 - Private line - 110 S. Hydraulic - 1-29-40 - R.H. Anderson.  
 #1368 - Top - 111 S. Kansas - 4-1-42 - E.B. Brinnon - Seal off #2840 Seal off - 111 S. Kansas - Al Henning - 4-26-67  
 #1776 - Top - 1901 E. Douglas - De Coursey Cream Co. - 10-18-44 - Thompson Plbg. Co. Seal off #5385 - Al Henning - 401 S. Douglas - 4-1-66  
 #1116 - Used old connection - 1815 E. Douglas - Cowan Plbg. Co.  
 #3691 - Top - 1901 E. Douglas - De Coursey Cream Co - Moore-Robertson - 3-1-55.  
 9800 600W 141 S. Minneapolis - Fredrick - 3-25-59 2+80.5

2002 01251