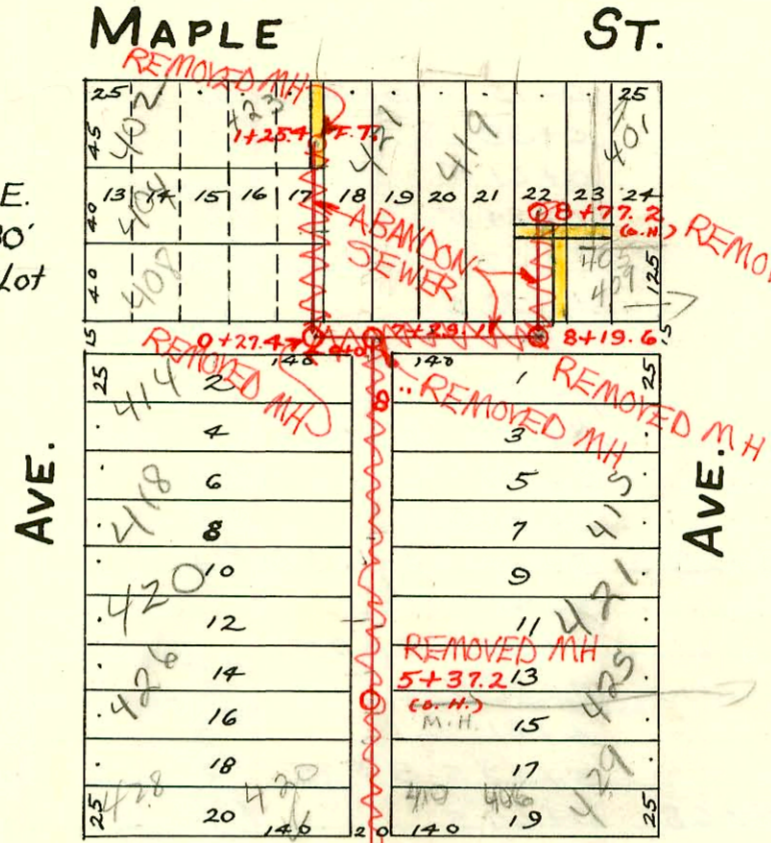


DIST. A - S.S. No. 8 - 1918

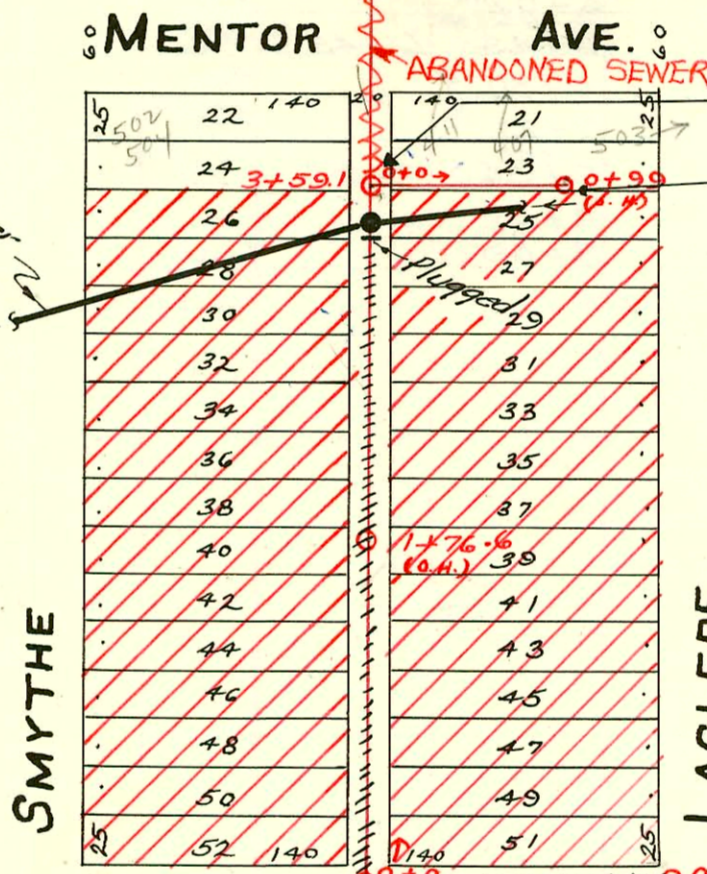
RELOCATION OF A PART OF SUBMAIN, SANITARY SEWER DISTRICT # 21
PROJ. NO. 468-82454 (621037)
BUILT BY DONDLINGER CONST. CO.
BOOKED 7-5-95 FROM AS BUILTS

Easements #767 & 759 Being E. 10' of N. 45' Lot 17 & S. 10' of N. 80' Lots 22 & 23, also E. 10' of S. 60' of Lot 22.

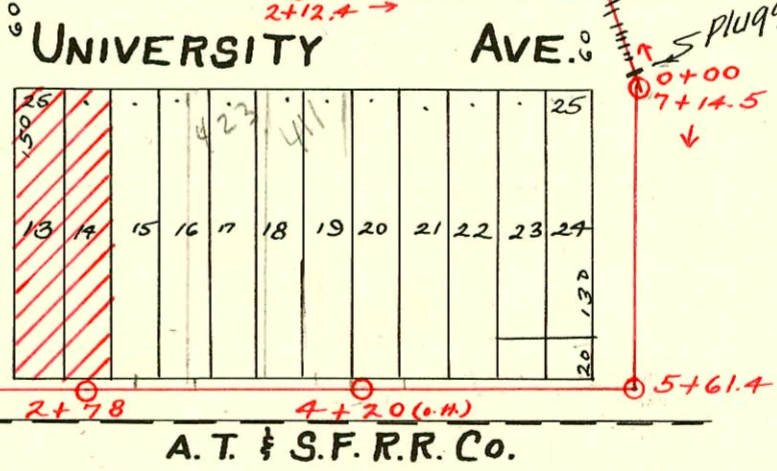


Advised by Alvin Hennings that this M.H. is 50' W in alley instead of 75'

Relocated San. Sewer (See Page 1-87)



NOTE: CROSS-HATCHED AREA CONDEMNED FOR U.S. 54 HIGHWAY R/W



CONSTRUCTION RECORD

SERVICE RECORD

STATION	ELEVATION		Depth	MANHOLE	4-INCH "Y" BRANCHES		No. of Permit		House Number		DATE OF PERMITS	
	Ground	Grade			North West	South East	North West	South East	North West	South East	North West	South East
2	106.88	101.30	5.58		2+03.5							
				2+78	2+27		#914					5-15-19
					2+51		#3920		Sealed off			2-26-57
3	106.50	101.45	5.05		3+03		#31					1-3-17
					3+35.5		#30		423 w/ 4" only Sealed off			1-3-17
					3+48		#3919					2-26-57
					3+71							
					3+94		#3918		Sealed off			2-26-57
4	107.54	101.60	5.94		4+16.4		#3917		Sealed off			2-26-57
					4+41.5		#703					9-16-20
					4+64.8							
					4+87.5							
5	107.04	101.75	5.29		5+12.5							
				5+61.4	5+35.2							
						5+86.5						
6	106.62	101.89	4.73									
7	106.68	102.03	4.65	7+14.5								
0	107.00	102.06	4.94	0+00								
				0+54								
1	107.80	102.51	5.29									
2	107.94	102.96	4.98	2+12.4								
0	107.12	102.42	4.70	0+00	0+23	0+20.5	#525					7-25-17
					0+55.5	0+45.5	#28	#524				1-3-17
						0+65.5						
					0+91	0+88.5						
1	106.77	102.57	4.20		1+06	1+13.5	#24					1-3-17
					1+41.2	1+38.7	#25	#462				1-3-17
					1+66.7	1+64.2						7-6-17
					1+92.3	1+89.8	#1055	#461				7-18-23
2	107.13	102.72	4.41		2+18	2+15.5						7-6-17
					2+42.9	2+40.4	#276	#517				4-12-21
					2+68.3	2+65.8		#423				7-5-17
					2+94.3	2+91.8	#26					1-3-17
3	107.46	102.87	4.59		3+19.5	3+17	#3924		Sealed off			2-26-57
				3+59.1	3+45	3+42.5	#554					7-7-20
					3+70.5	3+68	#465		502-045 Smythe	507 include		7-6-17
					3+96.2	3+92.7						
4	107.77	103.02	4.75		4+82.8	4+80.3	#151231	#69		423 SIO include		3-3-95
5	108.25	103.17	5.08		5+07.8	5+05.3	#32		428 SIO Smythe	425-0 include		1-3-17
				5+37.2	5+33.0	5+30.5	#524		426 SIO Smythe	425-0 include		2-15-95
					5+55.5	5+53	#33		420 SIO Smythe	421 SIO include		1-3-17
					5+76.1	5+78.5	#468		420 SIO Smythe	421 SIO include		2-15-95
					6+06	6+03.5	#348		418 SIO Smythe	415 SIO include		5-9-22
					6+31.7	6+29.2	#436	#207	418 SIO Smythe	415 SIO include		11-4-19
					6+56.6	6+54.1			414 SIO Smythe	411 SIO include		5-24-20
					6+82.7	6+80.2	#587	#460	414 SIO Smythe	411 SIO include		4-14-95
7	107.45	103.47	3.98	7+29.1	7+47		#1521231		417 SIO			8-15-17
					7+59.7		#934					5-22-19
					7+85.2							
8	108.04	103.70	4.34	8+19.6	8+59.6%	8+53.3	#436		105 w/s			10-13-83
					8+74.7	8+74.7	for line	Eggs 21257				2-15-95
					8+98.7	8+98.7	no Y's	but end of line east 4" pipe				9-10-17
0	107.45	103.58	3.87	0+00	Sealed off 4" clay		#620		408 SIO Smythe			1-7-45
				0+27.4	0+61				404 SIO Smythe			8-24-17
					0+81.5				402 SIO Smythe			1-18-95
1	108.91	103.73	5.18		1+13.4	1+11.5	#790	#1304	402 SIO Smythe	421 SIO include		3-27-19
					1+25.4 FT.							10-20-19
Private sewer	0	107.7	103.15	4.55	0+0	0+22.0	#4551		411 SIO Mentor			5-3-51
Final BK M-17					0+64.0	0+64.0	#4550		407 SIO Mentor			5-3-51
Grades BK S-3					0+82.5	0+82.5	#4549		503 SIO LaCleda			1-18-95
	0+99	107.6	103.25	4.35	0+99 (0.1)							5-3-51

C46890-420 Smythe 10-1-74- (Repair) Riggs (5+72.2)

#471- 411 University 4-3-23

#281- Tap- 435 W. Maple - 6-7-37- C.A. Preston

Rec. #18580- Tap into M. H. 3+59.1 for private line -5-7-51- W. B. Carter

95-150- #5856- Tap- 410 Mentor 9-29-51- Harry Mann- (SIO 8" clay line 4" out of MH 5+37.2)

#3738- Tap- Trailer - 414 Smythe - 1-12-53- C.B. Coleman - Seal off C22976-2-17-71 (6+84.1)

#6989- Setting wye- Trailer - 418 Smythe - 11-17-53- C.B. Coleman.

#4482 Seal off trailer #18 Smythe - 3rd Pkwy. 11-4-65 (6+27)

C36804- Seal off- 409 LaCleda - Al Henning - 1-19-73

95-17717 2-6-95 406 w Mentor - 8" clay sealed off 4" outside MH st 37.2.

95-21227 2-15-95 423 w Maple - SIO at Sta 1+134

95-21207 2-15-95 402 SIO Smythe - Tied to line serving 423 Maple - SIO at Sta 5' S. of inside edge of sidewalk and 34.5' W of MH