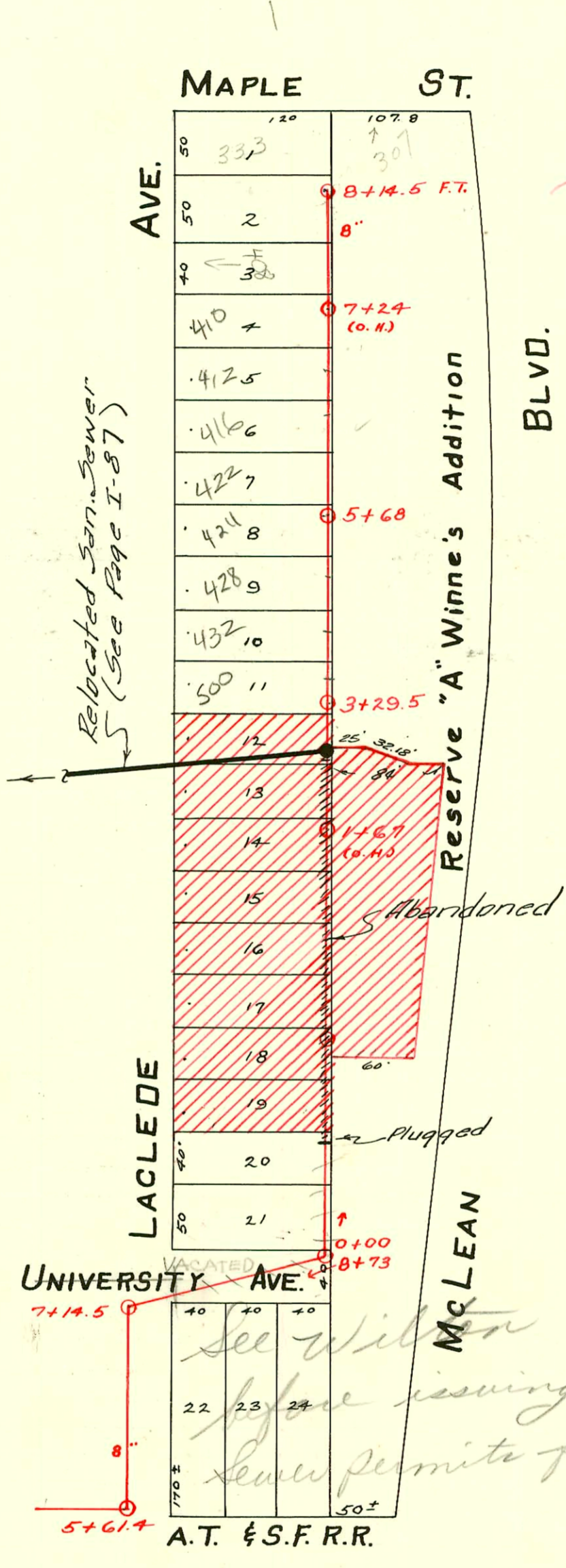


DIST. A - S.S. No. 8 - 1918



TRAP AREA

NOTE:
CROSS-HATCHED AREA
CONDEMNED FOR U.S. 54
HI-WAY R.I.W.

See Wilson
before issuing any
sewer permits for 550 LaClede
6-8-76

CONSTRUCTION RECORD						SERVICE RECORD						
STATION	ELEVATION		Depth	MANHOLE	4-INCH "Y" BRANCHES		No. of Permit		House Number		DATE OF PERMITS	
	Ground	Grade			North West	South East	North West	South East	North West	South East	North West	South East
5	107.04	101.75	5.29	5+61.7		5+86.5						
6	106.62	101.89	4.73									
7	106.68	102.03	4.65	7+14.5		7+58.0						
8	107.06	102.19	4.87	8+73								
0	107.11	102.30	4.81	0+0	0+13	0+16						
					0+39							
					0+61.5							
					0+84.5							
1	106.3	102.45	3.85		1+07	1+09.5	#18				7-7-72	
					1+32.5						1-3-17	
					1+57.5		#17				1-3-17	
					1+83.5		#22				1-3-17	
2	106.00	102.60	3.40		2+01	2+03.5						
					2+41		#21				1-3-17	
					2+81.5		#15				1-3-17	
3	106.40	102.75	3.65	3+29.5	3+21	3+23.5	#14				1-3-17	
					3+61							
4	107.00	102.90	4.10		4+02.5	4+05						
					4+42.5		#12				1-2-59	
					4+81.4		#9				1-3-17	
5	107.8	103.05	4.75		5+22.5	5+25						
					5+62.5		#8				1-3-17	
6	108.36	103.20	5.16	5+68	6+02.5		#7				1-3-17	
					6+43	6+45.5	#6				1-3-17	
					6+80.5		#5				3-31-23	
7	108.40	103.35	5.05		7+21		#10				1-3-17	
					7+56.5	7+59	#7				1-26-20	
					7+84							
8					8+09		#48				7-3-66	
					8+14.5 FT.		#48				11-14-28	

Tap - 503-507 Maple - Lumber Yard - #32 - 1-18-24
 #4733 - Tap - 520 LaCleda - 5-24-51 - Baker Pibg. Co.
 #4913 - Tap - 307 W. Maple - 4-20-53 - Vaughn Pibg. Co.
 21729 #14041 - Tap (307 W. Maple) - 4-5-61 (8+05.5) 10-19-88 1/2" clay
 #B1455 - Seal off - 530 LaCleda - al Henry - 4-9-64