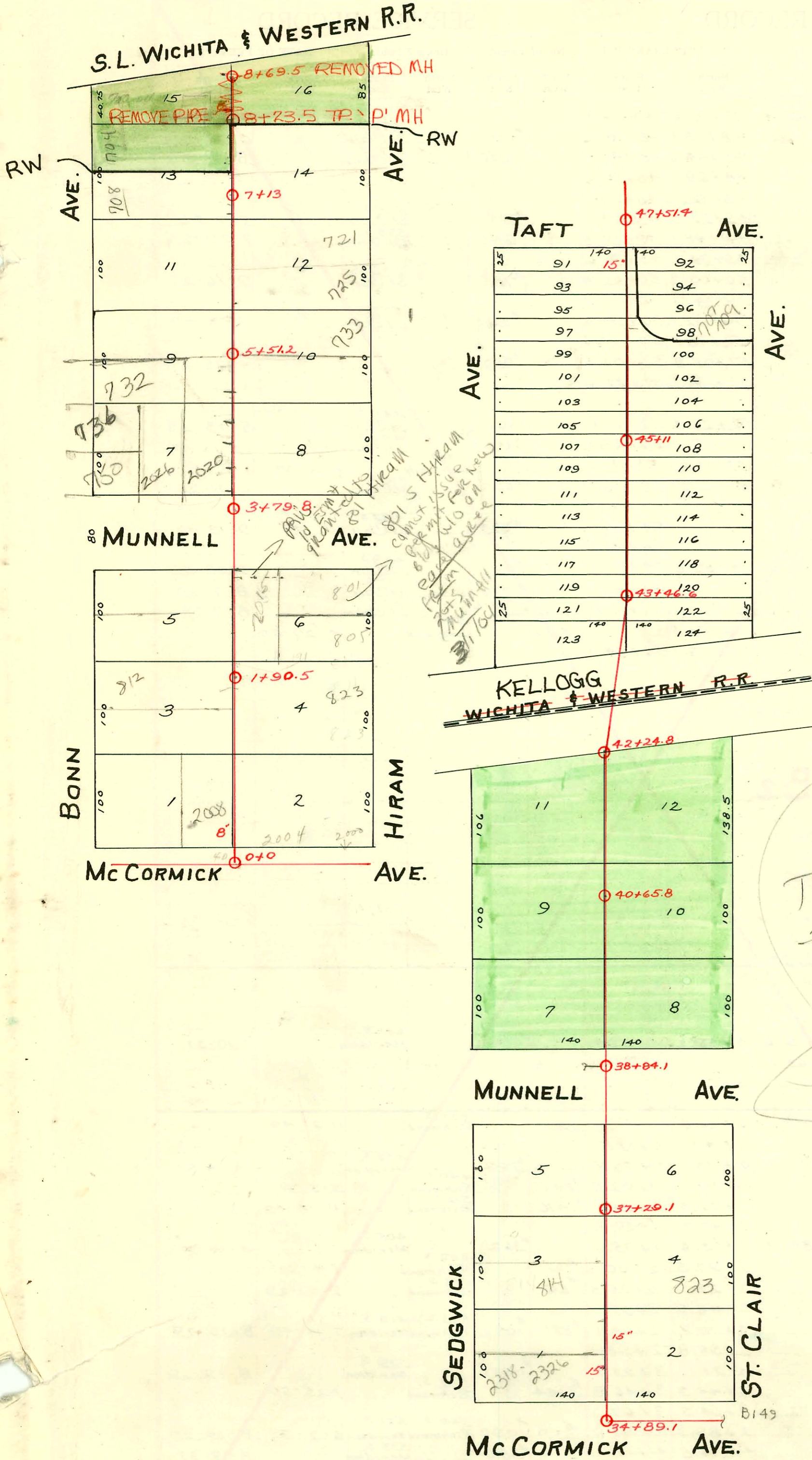


SUB-MAIN A - S.S. No. 21
1922



TRAP AREA
 due to 15" main
 per sewer
 maint
 7-29-98
 BR

2003-02162-8120103- 736 Bonn-Padgett Entrp - 4" 40 PVC - Replaced all but lower 95' - 1/4" fall - shallow - tied into 4" orangeburg at lower connection - 1H45, 1H22, 4" twin co @ house, 4" one-way co @ 35' out. Runs across property at 2020 W. Munnell
 2003-02327-915103- 736 Bonn-Padgett Entrp - 4" 40 PVC (completion of SWR repair from above)
 Replaced all but lower 2' 1/4" fall shallow - 1H22, NO alley
 N/C SWR 2004-00982 419104 Wilks + Assoc

CONSTRUCTION RECORD

SERVICE RECORD

Between St Clair & Sedgwick, McCormick to Taft.

STATION	ELEVATION		Depth	MANHOLE	4-INCH "Y" BRANCHES		No. of Permit		House Number		DATE OF PERMITS	
	Ground	Grade			North West	South East	North West	South East	North West	South East	North West	South East
34+89.1	109.34	103.94	5.40	34+89.1	35+46.1	35+48.6	#1357		2318-26 McCormick		7-27-98	
35+0	109.33	103.95	5.38		35+70.6	35+73.1	#893		827 S. St. Clair			7-10-29
36+0	110.04	104.01	6.03		35+95.6	35+98.1	#936		824 S. Sedgwick		7-26-29	
					36+21.1	36+23.6	#223		825 S. St. Clair			3-21-30
					36+46.9	36+49.4	#1359		818 S. Sedgwick		6-21-50	7-31-29
					36+67.8	36+70.3						
					36+92.9	36+95.4	#1180					
37+0	109.98	104.07	5.91	37+29.1	37+18.9	37+21.4	#872	#933	812 S. Sedgwick	821 S. St. Clair	5-5-29	7-25-29
					37+45.8	37+48.3	#1131	#1189	808 S. Sedgwick	819 S. St. Clair	8-23-29	9-30-29
					37+71.1	37+73.6						
					37+96.8	37+99.3	#1056	#102	800 S. Sedgwick	817 S. St. Clair	8-14-29	10-10-34
38+0	110.14	104.13	6.01		38+22.6	38+25.1						
					38+84.1	38+87.1						
39+0	110.65	104.19	6.46		39+25.4	39+27.9	#147	#860	782 S. Sedgwick	783 S. St. Clair		9-15-30
					39+50.1	39+52.6					3-3-30	
					39+76.6	39+79.1						
40+0	110.14	104.25	5.89		40+02.1	40+04.6	#1015	#465	776 S. Sedgwick	781 S. St. Clair	8-7-29	9-11-31
					40+28.2	40+30.7	#921		772 S. Sedgwick	777 S. St. Clair		7-24-29
					40+65.8	40+68.3	#1359				9-24-29	
					40+80.1	40+82.6						
41+0	110.05	104.31	5.74		41+06.9	41+09.2	#891	#1004	760 S. Sedgwick	775 S. St. Clair	9-23-30	7-10-30
					41+33.1	41+35.6	#991		758 S. Sedgwick	773 S. St. Clair		8-5-29
					41+59.1	41+61.6	#280				3-31-30	
					41+86.1	41+88.6						
42+0	109.42	104.37	5.05	42+24.8		42+10.3						
43+0	109.84	104.43	5.41	43+46.6	43+54.1	43+56.6						
					43+77.9	43+80.4						
44+0	109.73	104.49	5.24		44+02.9	44+05.4						
					44+27.7	44+30.2						
					44+55.8	44+58.3						
					44+82.6	44+85.1						
45+0	109.97	104.55	5.42	45+11	45+04.3	45+06.8	#1813		609 S. St. Clair			12-27-48
					45+29.8	45+32.3	#528		713 S. St. Clair			3-24-52
					45+55.1	45+57.6						
46+0	110.41	104.61	5.80		45+81.1	45+83.6	#24550		711 S. St. Clair			5-25-51
					46+07.1	46+09.6	#21000		709 S. St. Clair			5-1-52
					46+32.1	46+34.6	#1087					5-2-52
					46+60.1	46+62.6						
				killed	46+82.9	46+85.4						
47+0	110.40	104.67	5.73	47+51.4	47+07.8	47+10.3	#1086		701 S. St. Clair			5-2-52
Between Hiram & Bonn, McCormick to Wichita & Western R.R.	0+0	107.0	103.74	3.26	0+0	0+60.8	0+58.3	#102	830 Bonn	2002 McCormick		6-23-32
	1+0	106.81	103.84	2.97		0+86.2	0+83.7	#981	2023 McCormick			5-9-77
						1+12.5	1+10	#1794				8-3-56
						1+37.5	1+35					
						1+62.8	1+60.3	#2131	816 Bonn			3-10-49
					1+90.5	1+86.8	1+84.3	#3147	823 Hiram			3-18-47
2+0	106.78	103.94	2.84		2+12.5	2+10	2132		812 R Bonn			3-10-49
					2+38	2+35.5		#1325	811 Hiram			12-18-28
					2+63.7	2+61.2		#1066	805 Hiram			8-14-29
					2+89.5	2+87		#193047	801 Hiram			7-18-50
3+0	106.98	104.04	2.94		3+14.8	3+12.3	#1538		2025 Munnell			10-25-29
					3+40.9	3+38.4	1262		750 Bonn			5-15-52
4+0	106.49	104.14	2.35		4+28.5	4+26	#402		2020 Munnell			7-13-48
					4+54.3	4+51.8	#16	#898	747 Hiram			5-18-48
					4+79.9	4+77.4	#249		736 R Hiram			8-20-53
5+0	106.77	104.24	2.53		5+05.5	5+03	#248		732 Bonn			3-30-50
					5+31.3	5+28.8		#1200	737 Hiram			3-30-50
					5+57.2	5+54.8	#247		726 Bonn			11-14-28
					5+82.8	5+80.3	#247		733 K Hiram			3-30-50
6+0	107.52	104.34	3.18		6+08.1	6+05.6	#246		722 R Bonn			8-26-47
					6+34	6+31.5						
					6+59.8	6+57.3	#245		716 Bonn			3-30-50
					6+85.3	6+82.8						
7+0	107.47	104.44	3.03	7+13	7+08.2	7+05.7	#3056	#1062	708 Bonn	717 Hiram	2-28-89	10-1-28
					7+34	7+31.5						
					7+59.9	7+57.4						
					7+85.2	7+82.7	#963		714 Hiram			7-1-29
8+0	107.64	104.54	3.10		8+10.8	8+08.3	#1807	#689	705 S. Bonn	707 Hiram	6-30-50	3-27-89
8+69.5	107.87	104.61	3.26	8+23.5	8+36.5	8+34	#530					6-12-29
					8+62.3	8+59.8						5-10-29

No info on new MH OKB 2-12-96

#180 - Tap at 6+39.2 - 725 Hiram - 6-9-47 - Harley Riggs.
 #572 - Used old connection - 773 S. St. Clair - 6-14-49 - P.C. Fish.
 #1238 - Tap - 2026 Munnell - 6-8-50 - Howard Shepherd.
 #2122 - Tap - 806-08 Bonn - 8-11-52 - Howard Self.
 #3242 - Tap - 2022 Munnell - 7-13-51 - Stigers Pkg.
 #4296 - Tap - 2021 Munnell - 2-28-53 - Brodie Pkg. Co.
 #715 - 1-26-77 Tap - 702 S. Bonn - 2-28-77 - 775.5 (7+72.5) +
 #2457 - 7-15-67 Tap - 702 S. Bonn - 2-28-77 - 5-15-62 (8+52.5)
 #4194 - Sedgwick - 2019 Munnell - 4-16-64 - Lister Spencer
 #4884 - 701 Hiram - 11-19-75 - 6-19-75.
 #61602 - 6-14-77 - 2002 McCormick - R. W. ...
 #00982 - 7-18-80 - 2015 Munnell (3+78.9 N.W.) Gorges