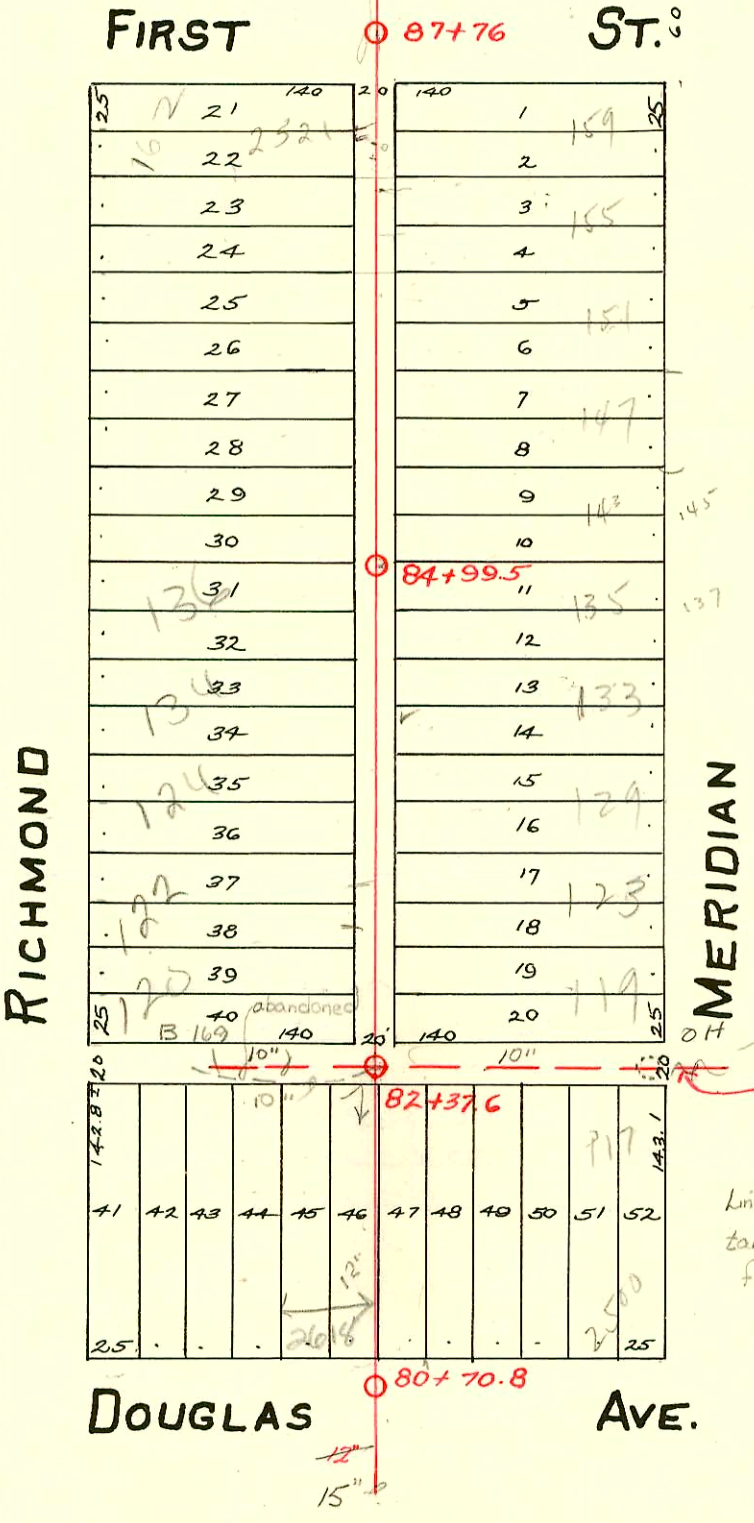


S.S. No. 21
Sub-main A - 1922



25	N 21	140	20	140
10	22	232.1	1	169
	23		2	
	24		3	165
	25		4	
	26		5	161
	27		6	
	28		7	147
	29		8	
	30		9	143
	31		10	145
13	32		11	135
	33		12	137
13	34		13	133
	35		14	
12	36		15	129
	37		16	
12	38		17	123
	39		18	
12	40	abandoned	19	
10	41	169	20	119
10		140		145

143.8	41	42	43	44	45	46	47	48	49	50	51	52	143.1
25													25

S.S. No. 13
Intercepted at Sta. 82+37.6
By Submain A - S.S. No. 21

Line discontinues here, OH. serves as
taint for flow to run west, as per
flow crew 7/12/76

CONSTRUCTION RECORD						SERVICE RECORD						
STATION	ELEVATION		Depth	MANHOLE	4-INCH "Y" BRANCHES		No. of Permit		House Number		DATE OF PERMITS	
	Ground	Grade			North West	South East	North West	South East	North West	South East	North West	South East
80+70.8	114.12	107.33	6.79	80+70.8								
81+70.8	114.33	107.41	6.92									
82+20.8	114.88	107.45	7.43	82+37.6								
82+37.6	114.88	107.66	7.22		82+58.4	82+60.9	#1001		118 N. Richmond	121 N. Meridian	9-17-28	
					82+84	82+86.5	#40					1-19-26
83+00	114.72	107.71	7.01		83+10.5	83+13	#663	#439	128 N. Richmond		5-3-23	4-27-28
					83+36	83+38.5	#2000	#599	122 N. Richmond		9-6-28	
					83+62.7	83+65.2						
					83+83	83+85.5		#108	127 N. Meridian			2-7-28
84+00	115.03	107.79	7.24	84+99.5	84+08.8	84+11.3	#347	#1205	130 N. Richmond	133 N. Meridian	4-9-28	8-4-23
					84+35	84+37.5						
					84+61.3	84+63.8						
					84+86.3	84+88.8	#951		128 N. Richmond		9-4-28	
85+00	115.71	107.87	7.84		85+11.6	85+14.1	#25			143 N. Meridian		2-2-25
					85+38	85+40.5	#1101	#56	144 N. Richmond	147 N. Meridian	10-13-28	2-11-25
					85+63.6	85+66.1						
					85+87.1	85+89.6	#980	#322	150 N. Richmond	151 N. Meridian	8-3-29	
86+00	116.21	107.95	8.26		86+14.3	86+16.8						
					86+38.7	86+41.2	#452	#674	154 N. Richmond	157 N. Meridian	4-30-29	6-22-25
					86+66.7	86+69.2						
					86+89.4	86+91.9	#1026		158 N. Richmond	151 N. Meridian	9-21-28	
87+00	116.15	108.03	8.12	87+76	87+13.1	87+15.6	#6982	#9	252 W. Richmond	151 N. Meridian	1-9-52	1-5-27
88+00	115.28	108.11	7.17		88+14.2	88+16.7						
					88+41	88+43.5	#291	#456	204 N. Richmond	201 N. Meridian	4-3-29	5-1-25
					88+66	88+68.5						
					88+92	88+94.5		#50		207 N. Meridian		1-28-27
89+00	115.11	108.19	6.92		89+18	89+20.5	#454		208 N. Richmond		5-1-28	
					89+44	89+46.5		#468		211 N. Meridian		6-4-26
					89+69.5	89+72	#362		214 N. Richmond		4-12-28	
					89+95.5	89+98	#978		218 N. Richmond		11-15-26	
90+00	115.93	108.27	7.66	90+06.5	90+21.5	90+24						
					90+46.5	90+49						
					90+72.5	90+75	#169		226 N. Richmond		3-9-26	
					90+98		#27		230 N. Richmond		1-14-26	
91+00	117.56	108.35	9.21		91+24	91+26.5						
					91+50	91+52.5		#468		223 N. Meridian		6-3-27
					91+75	91+77.5		#1				1-2-25
92+00	118.29	108.43	9.86	92+20.5	92+00.5	92+03	#687	#175	240 N. Richmond	219 N. Meridian	8-10-26	3-10-26
					92+26.5	92+29		#152				3-4-26
					92+52	92+54.5		#535		229 N. Meridian		6-22-26
					92+78	92+80.5	#1420		244 N. Richmond		10-5-29	
93+00	117.70	108.51	9.19		93+03	93+05.5						
					93+30	93+32.5	#481	#1071	250 N. Richmond	249 N. Meridian	6-8-27	9-28-25
					93+55	93+57.5	#854		258 N. Richmond		10-6-26	
					93+74	93+76.5		#582		253 N. Meridian		5-27-25
94+00	116.18	108.59	7.59	94+33								
94+33	116.65	108.62	8.03									

4446-159 N. Meridian 10-28-81 C. Severo 87+76.0 L.

#230 - Tap - 162 N. Richmond - 5-17-37 - Tess Hanna (87+21)
 #6190 - Used old connection - 2500 W. Douglas - 8-17-53 Harley Riggs, C 12237 - 6-6-79 sealed 137' E. of M.H. 82+37.6