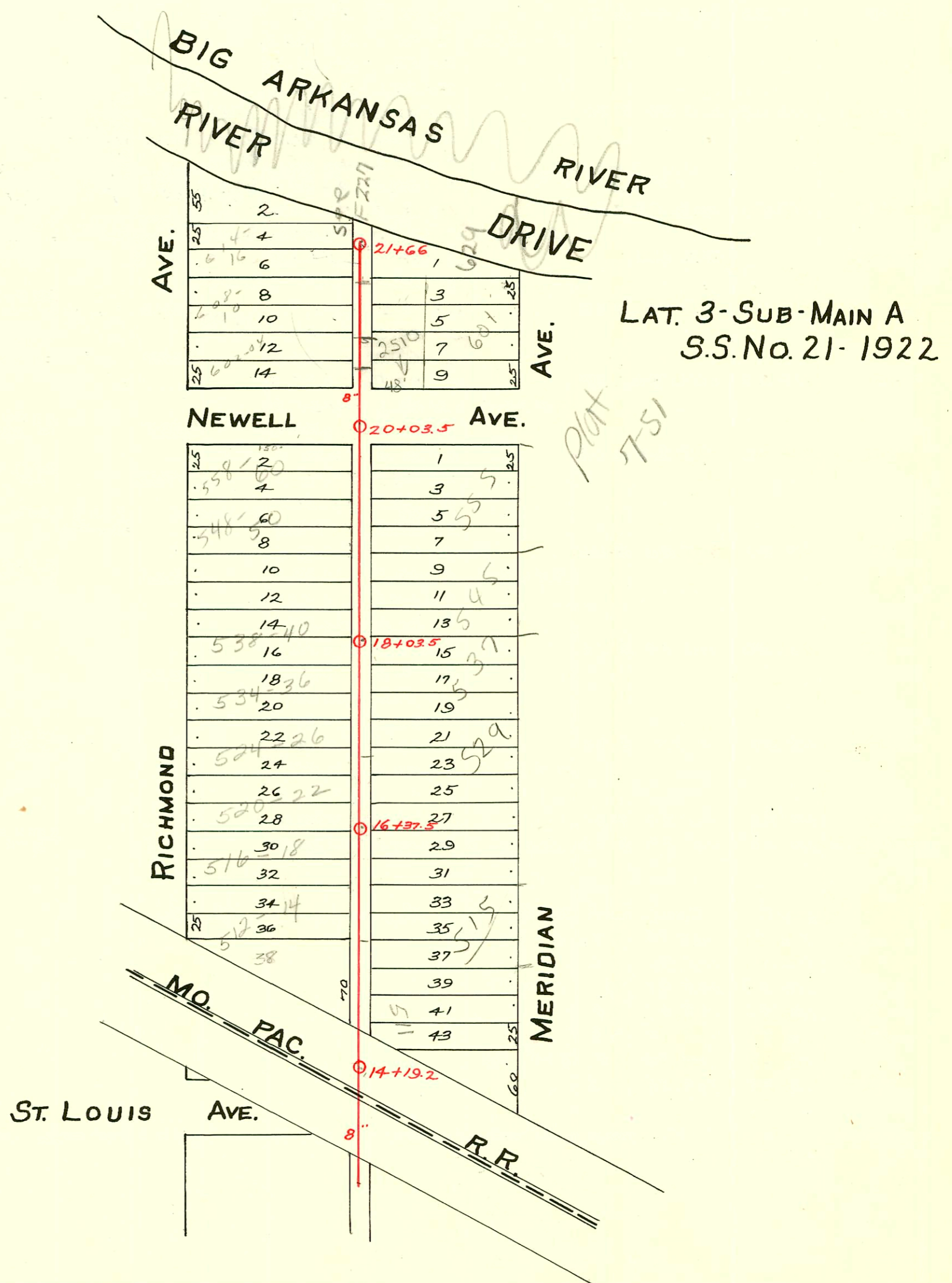
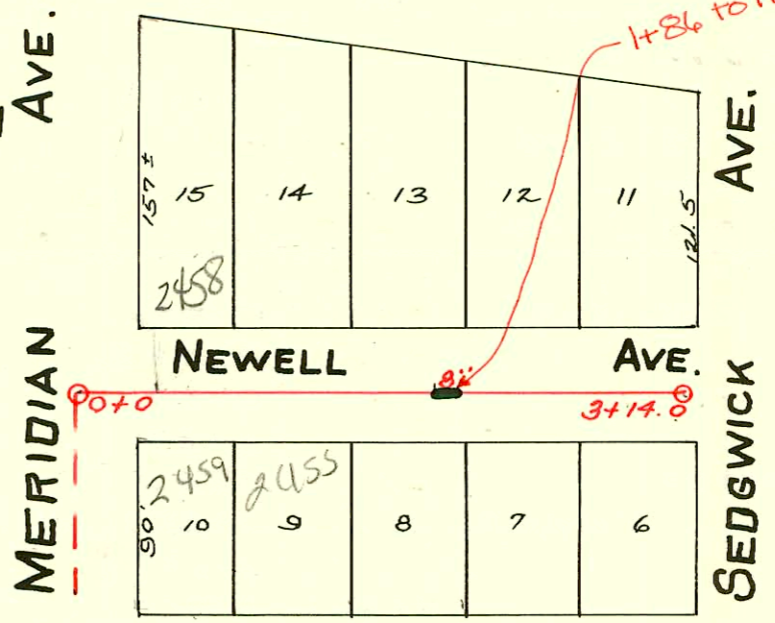


LAT. 20-DIST. A-S.S.No.21  
W.B. CARTER-1942

1995 SANITARY SEWER REHABILITATION  
PROGRAM-PHASE II  
PROJ. NO. N/A (621060)  
BUILT BY W.B. CARTER CONST. CO.  
BOOKED 2-16-96 FROM AS BUILTS



CONSTRUCTION RECORD						SERVICE RECORD						
STATION	ELEVATION		Depth	MANHOLE	4-INCH "Y" BRANCHES		No. of Permit		House Number		DATE OF PERMITS	
	Ground	Grade			North West	South East	North West	South East	North West	South East	North West	South East
14+0	116.60	110.16	6.44	14+19.2		14+24.5		#6043		507 N Meridian		10-6-51
14+19.2	116.60	110.18	6.42			14+35		#12927 #3755		511 N Meridian		1-18-85 1-22-51
15+0	115.85	110.26	5.59		14+57.5	14+55.5		#27968	510 N N Richmond		9-15-71	
					14+83.5	14+81		#25082 #2885	515 N 510 Meridian		4-9-90 4-1-46 4-14-88	
					15+09.5	15+06.5		#27969	510 N N Richmond		9-15-71	
					15+34	15+31.5		#3299	523 N Meridian		9-15-71	2-14-50
					15+54.8	15+52.3			525 N Meridian			
16+0	116.55	110.36	6.19		15+85	15+82.5		#98	526 N Meridian		9-15-71	10-2-34
					16+10.5	16+08		#27970	526 N Richmond		11-24-51	
					16+37.5	16+33		#2736	529 N Richmond		10-16-50	
					16+58	16+55.5		#21971	529 N Meridian		9-15-71	9-30-99
17+0	115.75	110.46	5.29		16+83	16+80.5		#3255	529 N Meridian		9-15-71	2-8-50
					17+08.5	17+06		#27002	529 N Richmond		2-23-68	
					17+33.7	17+31.2						
					17+59.3	17+56.8		#121	527 N Meridian			4-24-36
					17+84.5	17+82		#27001	528-54 Richmond		2-23-68	
18+0	115.69	110.56	5.13		18+11.8	18+09.3		#1658	545 N Meridian			6-19-39
					18+08.5	18+32.5		#6050	542-44 Richmond		12-7-67	
					18+55.2	18+52.7						
					18+80.7	18+78.2		#8641	548-50 Richmond		7-7-83	
19+0	115.77	110.66	5.11		19+06	19+03.5		#821	555 N Meridian		7-7-83	7-5-29
					19+31.5	19+29		#58004	555 N Richmond		10-5-76	
					19+56	19+53.5		#1807	2510 Newell		5-12-42	
20+0	116.16	110.76	5.40		20+32	20+29.5		#6272	601 N Meridian			10-26-51
					20+03.5	20+58		#2029	602 N Richmond		6-4-52	
					20+82	20+79.5		#58005	629 N Richmond		10-5-76	7-9-51
21+0	117.12	110.86	6.26		21+07.5	21+05		#5776	614-16 Richmond		10-5-76	
					21+32.5	21+30		#58006				
21+66	117.94	110.925	7.01	21+66	21+58	21+55.5						
0+0	116.10	111.30	4.80	0+00								
					0+39.6	0+42.6		#2476	2458 Newell		8-6-42	
					0+68.7	0+71.7		Connected				
1+0	117.30	111.40	5.80		0+97.8	1+00.8		#2136	2454 Newell	2455 Newell	6-22-42	6-19-42
					1+32.3	1+35.3		#2464	2450 Newell		8-3-42	
					1+66.0	1+69.0		#2478	2444 Newell		8-6-42	
					1+94.4	1+97.4		#2111	2451 Newell		6-19-42	
2+0	116.20	111.50	4.70		2+30.5	2+33.5		#2477	2440 Newell		8-6-42	
					2+56.7	2+59.7		#1369	2441 Newell		4-2-42	
					2+82.3	2+85.3		#2102	2436 Newell		6-18-42	
3+0	116.60	111.60	5.00		3+05.0	3+08.0						
	116.40	111.62	4.78	3+14.0								

8/06/2001 2458 w Newell - During Meridian St construction, the contractor broke private serv. line and repaired at 272' w. of MH 3+14 per e-mail from Calvin Fugit

1999-00819-9/30/99-529 N Meridian - Bucks Backhoe - City Fredco 4" sch 40 68' 8" N of MH (on MSMT) TWINCO, 2002

602 1/2 N. Richmond - Jim Hanna - Private line - 6-24-42  
93-8544-7 4/14/93 515 N Meridian - NC - Mias Const