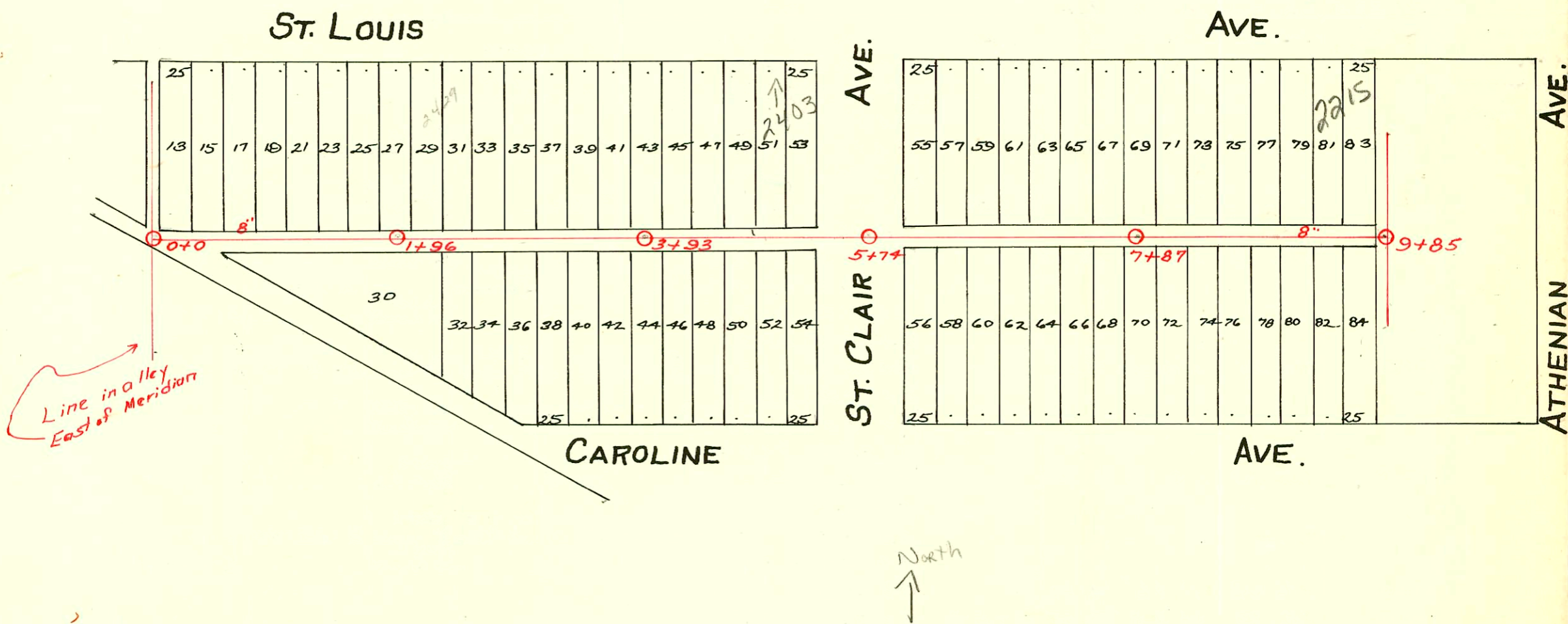


LAT. 3- SUB-MAIN A - S. S. No. 21
1922



2002-00291- 2/1/02- 334 N St Clair - Wichita Exc- Preeco - City Repair - 7' W of MH (on msmt) 1V22,
1H22, 1TWIN CO
2002-00532- 2/26/02- 2215 W St Louis. Redde Rootr- 2 Fernco @ house - Replace 1' of pipe - 4" SCH 40

CONSTRUCTION RECORD

SERVICE RECORD

In alley E. of Meridian Bet. Martha and 3rd St.

Line in St. Clair N. From M.H. 5+70.5

Line in St. Clair S. From M.H. 5+70.5

Line in Alley Bet. St. Louis & Caroline

STATION	ELEVATION		Depth	MANHOLE	4-INCH "Y" BRANCHES		No. of Permit		House Number		DATE OF PERMITS			
	Ground	Grade			North West	South East	North West	South East	North West	South East	North West	South East	North West	South East
0+0	116.02	109.59	6.43	0+0	4+54.0-40 0+17	0+11.5	#200-0028 12/19	#1227 #357	2443 R W3rd	2324 2441 W 3RD	4-17-01 5-19-24	5-28-24 7-3-46		
1+0	115.69	109.69	6.00		1+20.5 1+45.5	1+18 1+43	#667		5446 2422 Martha	2328 Martha		6-8-29		
2+0	115.69	109.79	5.90	1489	1+67.5 1+96.5	1+65 1+94	#964 #1169	#2028	2433 W 2ND 2421 W Martha	2326 Martha	11-7-27	2-26-49		
3+0	115.54	109.89	5.65		2+19.5 2+45.5 2+70.5 2+93.3	2+17 2+43 2+68 2+90.8	#1169 #2199 #963	#2268	2421 W 2ND 2425 W 3RD 2317 W 2ND	2326 Martha	5-21-24	10-6-24 4-8-40 11-9-26		
4+0	115.04	109.99	5.05	3+77.5	3+19.9 3+44.8 3+69.5 3+93.2	3+16.4 3+42.3 3+67 3+90.7	#973 #1118 #1316	#1316 #1568 #288	2439 W 2ND 2317 W 2ND 2315 W 2ND	2422 Martha 2420 Martha	11-12-26 5-15-24 6-5-24	12-14-28 11-22-48 3-27-25		
5+0	113.43	110.09	3.34	5+70.5	4+15.4 4+41.5 4+71.1 4+91	4+03 4+39 4+68.6 4+88.5	#1117 #208 #894	#1472 #2788	2311 W 2ND 2307 W 2ND 2301 Whitney	2336 Martha 2406 Martha	5-15-24	6-24-24 3-8-46 8-13-25		
5+70.5	113.19	110.16	3.03		5+16.5 5+17	5+17								
0+0	113.19	110.16	3.03	0+0	0+09 0+34.5 0+59.5 0+84.7	0+09 0+34.5 0+59.5 0+84.7	#1997		354 N. St. Clair			11-29-39		
1+0	113.14	110.26	2.88		1+10.5 1+38-3 1+63.5	1+10.5 1+38-3 1+63.5	#544 #3480	9410	366 N. St. Clair 368 N. St. Clair			12-17-36 10-17-83 5-13-41		
2+0	114.39	110.36	4.03		1+89	1+89								
2+20	114.43	110.38	4.05	2+20	2+14.3	2+14.3								
0+0	113.19	110.16	3.03	0+0	0+09 0+34.3 0+59.3 0+85.4	0+09 0+34.3 0+59.3 0+85.4	#951		340 N. St. Clair			11-4-26		
1+0	113.46	110.26	3.20		1+10	1+10								
1+30	113.10	110.29	2.81	1+30	4+54.0 1+23	4+54.0 1+23	#2002-00291 #3595		334 N.R St. Clair	see next		1-6-51		
0+0	115.27	110.36	5.09	0+0	0+15 0+40 0+66 0+91	0+15 0+40 0+66 0+91	#6853		2445 St. Louis			11-2-53		
1+0	115.36	110.46	4.90		1+17 1+41 1+71	1+17 1+41 1+71	#2129		2433 St. Louis			3-10-49		
2+0	115.36	110.56	4.80	1+96	1+73.5 2+05.5 2+30.5 2+55.5 2+81.5	1+73.5 2+03 2+28 2+53 2+79	#3224 #2654 #1577 #1135		2435 St. Louis 2451 St. Louis 2429 St. Louis 2423 St. Louis			11-28-50 9-25-52 2-9-48 12-19-46		
3+0	114.96	110.66	4.30		3+06.5 3+30.5 3+55.5	3+04 3+28 3+53								
4+0	116.16	110.76	5.40	3+93	3+82.5 4+07.5 4+33.5 4+58.5 4+84.5	3+80 4+05 4+31 4+56 4+82	#377		2315 St. Louis			7-28-37		
5+0	116.18	110.86	5.32		5+12.5 6+02.5 6+28 6+54.5 6+78.5	5+10 6+00 6+25.5 6+52 6+76	#2301 #1940	#1379	2407 St. Louis 2401 St. Louis	403 N. St. Clair	11-2-49 3-14-45	6-21-45		
6+0	116.16	110.96	5.20	5+74	6+02.5 6+28 6+54.5 6+78.5	6+00 6+25.5 6+52 6+76	#4493	#938	2247 St. Louis 2242 Caroline 2242 Caroline	2248 Caroline	4-27-51	9-27-29 10-17-47 10-13-49		
7+0	116.36	111.06	5.30		7+04.5 7+29.5 7+55.5	7+02 7+27 7+53	#34 #566	#429	2232 St. Louis 2236 Caroline	2236 Caroline	5-1-34	4-29-30		
8+0	117.56	111.16	6.40	7+87	7+80.5 8+06.5 8+31.5 8+55.5 8+77.5	7+78 8+04 8+29 8+53 8+75	#839	#2690	2227 St. Louis 2232 Caroline	2232 Caroline	10-1-26	12-5-49		
9+0	117.52	111.26	6.26		9+03.5 9+28.5	9+01 9+26	#485	#1697	2221 St. Louis 2226 Caroline	2226 Caroline	6-10-49	12-4-29		
9+85	116.99	111.345	5.65	9+85	9+54.5 9+52	9+52	#6479	#2215	2215 St. Louis 2204 Caroline	2204 Caroline	7-22-50	11-19-51		

#121-Tap-400 N. Meridian - 2-25-25
 #2262-Tap-2425 1/2 W. 3RD - J.E. Lansdowne - 8-30-45
 #58-Tap-2302 Martha - Frederick Pibq - 5-7-46.
 #144-Tap-461 N. St. Clair - 2-16-50 - Max Hinshaw (4+80)
 #20247 664584 - 2446 Martha - 12-21-77 - J.C. Lewis (0+61.0)
 #17889-56 455 N. St. Clair - 3-9-87 - Al Henning (4+86)
 #21879-2204 W. Caroline - 11-9-88
 94-12950-7 8-15-94 2403 St. Louis - David Lief - 4+86
 #1735-Jap-3487 - St. Clair - Gowan - 3-31-58
 4'S.O.R.35