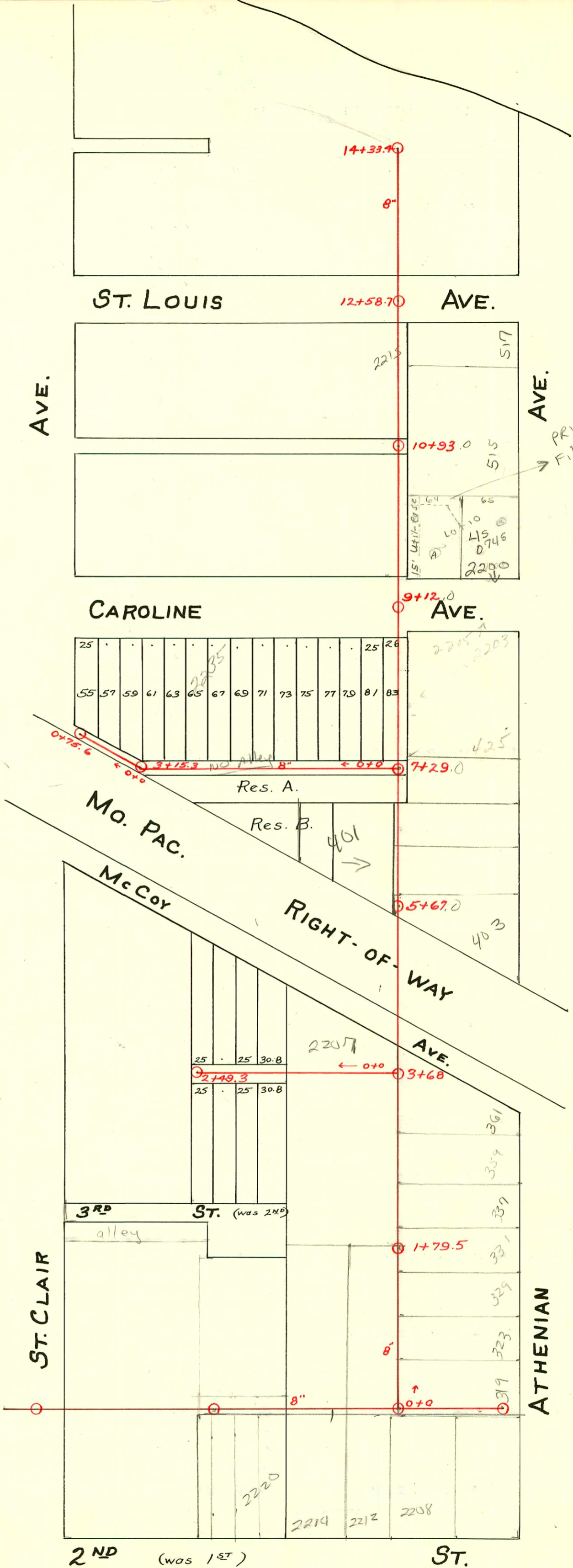


LAT. 3-SUB-MAIN A
S.S.No. 21-1922

Plat 8-49



Private ease
Film 981
Pg 1447

Private easement

2ND (was 1ST) ST.

ST.

ST. CLAIR

ATHENIAN

ST. LOUIS AVE.

AVE.

CAROLINE AVE.

AVE.

MO. PAC. McCoy

RIGHT-OF-WAY

3RD ST. (was 2ND)

alley

14+33.4

8"

12+58.7

2213

517

10+93.0

515

15' Utility Easement
45
0746
2200

9+12.0

0+75.6
0+0

3+15.3

Res. A.

7+29.0

Res. B.

5+67.0

403

2+49.3

3+68

2207

25 25 30.8

25 25 30.8

361

357

339

331

423

323

319

1+79.5

8"

2220

2214

2212

2208

0+0

8"

CONSTRUCTION RECORD

SERVICE RECORD

Line No. from
1st & W. of
Athenian

Line in Alley
So. of Caroline
Ave.

Line So. of
McCoy W. from
Sta. 3+68

STATION	ELEVATION		Depth	MANHOLE	4-INCH "Y" BRANCHES		No. of Permit		House Number		DATE OF PERMITS	
	Ground	Grade			North West	South East	North West	South East	North West	South East	North West	South East
0+0	113.52	110.24	3.28	0+0		0+80						
1+0	114.01	110.34	3.67			1+06.5						
				1+79.5		1+27		#982		329 N. Athenian		7-13-38
						1+52.7		#1240		315 N. Athenian		9-9-29
2+0	113.98	110.44	3.54			1+84		#1192				5-23-24
						2+10						
						2+35.5		#1764				8-1-24
						2+62.4						
						2+88						
3+0	114.16	110.54	3.62			3+14		2005 2054 2		361 N. Athenian		2-29-0
4+0	114.54	110.64	3.90			3+40		#105				4-6-31
				3+68		3+64						
5+0	115.36	110.74	4.62			5+50		#1624		403 N. Athenian		6-28-44
				5+67		5+78						
6+0	116.16	110.84	5.32			6+05		#2083		405 N. Athenian		4-14-48
						6+31.5						
						6+57.5		#111		407 N. Athenian		3-31-37
						6+83						
7+0	116.44	110.94	5.50			7+09.5		#99		409 N. Athenian		4-10-36
				7+29		7+34.5						
						7+63		#490		425 N. Athenian		7-23-47
						7+89.5		#1873		2203 Caroline		10-4-49
8+0	117.06	111.04	6.02			8+12						
						8+37						
						8+53						
9+0	117.81	111.14	6.67			9+49						
				9+12		9+75						
10+0	117.38	111.24	6.14			10+00		#21004		2200 510 Caroline		7-11-88
						10+28 TAP		2741		2200 Caroline		10-7-40
						10+27		21010		2200 Caroline		7-1-68
						10+53		#2613		515 N. Athenian		8-27-40
				10+93		10+80						
11+0	117.22	111.34	5.88			11+09		#1489		517 N. Athenian		4-5-44
						11+35		#1047		519 N. Athenian		11-3-47
						11+61						
						11+88						
12+0	116.86	111.44	5.42			12+14		#1808		555 N. Athenian		11-9-44
				12+58.7		12+81.7						
13+0	117.90	111.54	5.64			13+06.5						
						13+29.5						
						13+58.2						
						13+55.7						
						13+81.3						
14+0	116.79	111.64	5.15			14+07		#1435		601 N. Athenian		3-11-44
14+33.4	116.54	111.67	4.87	14+33.4		14+28						
0+0	116.51	110.97	5.54	0+0	0+17.5			#225	#1972	2219 Caroline	2206 McCoy	6-23-36
					0+42	0+73.4						4-5-48
					0+93.5							
1+0	115.97	111.07	4.90		1+19			#226		2223 Caroline		3-21-30
					1+44							
					1+68.6							
					1+94.7			#222		2227 Caroline		3-21-30
2+0	115.42	111.17	4.35		2+20	2+28						
					2+45.7							
3+0	115.07	111.27	3.80		2+71			8600		2235 Caroline		11-18-58
3+15.3	115.04	111.29	3.75	3+15.3	2+96			#6789		2241 Caroline		10-29-53
0+0	115.04	111.29	3.75	0+0	0+10.5			#19383		2247 Caroline		10/26/87
					0+36.6			#1537				10-25-29
0+75.6	115.10	111.36	3.74	0+75.6	0+61.7							
0+0	114.41	110.61	3.80	0+0		0+13						
						0+45						
						0+63.5	0+61					
						0+88.5	0+86					
1+0	115.38	110.71	4.67		1+14.5	1+12						
					1+38	1+36.5						
					1+64.5	1+62						
					1+90.5	1+88		#3393		2211 McCoy		4-29-41
2+0	114.33	110.81	3.52		2+14.9	2+12.4						
2+49.3	114.43	110.86	3.57	2+49.3	2+40.2	2+37.7						

#6059 Tap - 323 N. Athenian - 8-5-53 - Joe McDonald.
 #535 Tap - 2203 Caroline - 11-7-41 - Harley Riggs
 #2961 Tap - 322 N. St. Clair - 11-2-42 - V.H. Patton.
 #1364 Tap - 334 N. St. Clair - 1-24-44 - Wichita Plbg.
 #2563 Tap - 331 N. Athenian - 1-8-46 - J.N. Hanna.
 #1681 Park Board Private line - West Side Athletic Club - 7-20-50 - Pray Bros.
 #1682 " " " " " " " " - 7-20-50 - Pray Bros.
 92-7079-7 5/14/92 - 359 N Athenian - McCallough - 4" PVC 40
 + City tap into new 3' section of line.