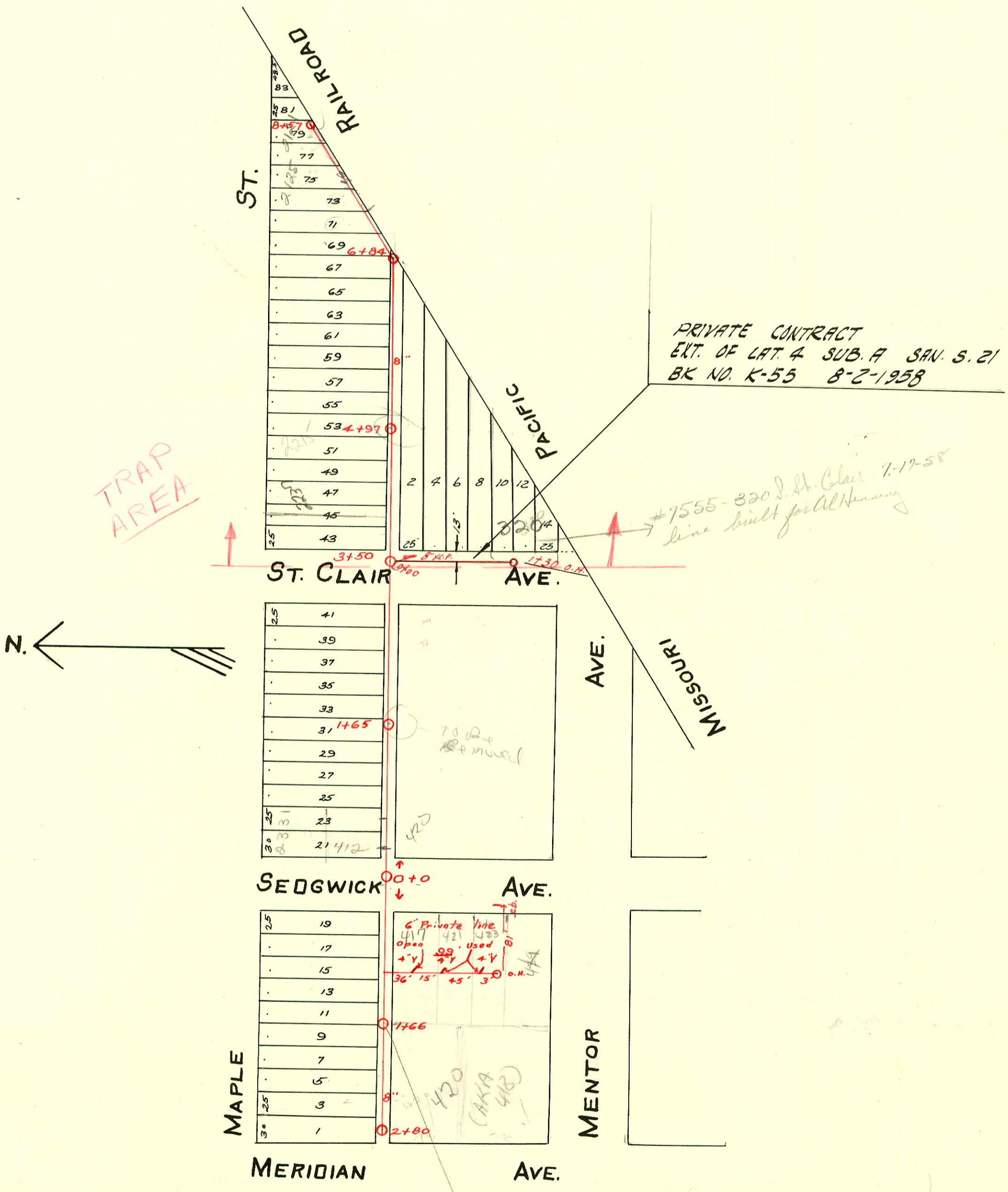


LAT. 4 - SUB-MAIN A - S.S. No. 21 - 1923



PRIVATE CONTRACT
EXT. OF LAT. 4 SUB. A SAN. S. 21
BK NO. K-55 8-2-1958

#7555-320 S. St. Clair 7-17-58
line built for Al Hermy

TRAP AREA

6" Private line
417 421 423
open used
+Y +Y +Y
36' 15' 45' 3' 0" O.H.

420
(AKA 418)

This with pipe removed as part of trap area
11-6-52
20-2-52

CONSTRUCTION RECORD

SERVICE RECORD

STATION	ELEVATION		Depth	MANHOLE	4-INCH "Y" BRANCHES		No. of Permit		House Number		DATE OF PERMITS		
	Ground	Grade			North West	South East	North West	South East	North West	South East	North West	South East	
Line West from M.H. 0+0 in Sedgwick	0+0	111.92	106.22	5.70	0+0	0+41.5	0+44						
						0+76							
						0+91.7							
	1+0	111.58	106.32	5.26		1+13.5							
						1+38.7		#143				2-8-24	
					1+66	1+58.8							
						1+81.8	TAP 1+85.9	#1216	C57796	2415 Maple	420 S. Sedgwick	11-6-25	9-21-76
	2+0	112.23	106.42	5.81		2+04		#1044		2417 W. Maple		9-23-25	
						2+27		11780		2419 W. Maple		11-2-59	
						2+47	2+38.1	#2631	2002-0148	2423 W. Maple	420 S. Sedgwick	12-1-24	5-22-02
						2+69.5	2+49.5	#7242	55731	2423 W. Maple		1-14-54	6-2-76
Line East from M.H. 0+0 in Sedgwick	0+0	111.71	106.32	5.39	0+0	0+65	0+67.5	#799	#1956		420 S. Sedgwick	10-10-23	4-5-48
						0+93		#27		2315 W. Maple		2-3-25	
						1+18.5		#389		2315 W. Maple		3-5-24	
	1+0	111.62	106.42	5.20	1+65	1+43							
						1+67.5							
						1+92.5		#227		2311 W. Maple		3-22-26	
	2+0	111.15	106.52	4.62		2+19		#251				2-20-24	
						2+43	2+45.5	#966		317 S. St. Clair		9-21-48	
						2+67.5		#1240		2301 W. Maple		11-13-25	
					3+50	2+94.3							
	3+0	110.70	106.62	4.08		3+65							
						3+87.7	3+90.2	#566		2241 W. Maple		6-30-26	
	4+0	111.37	106.72	4.65		4+15							
						4+43.3							
						4+65.3							
					4+97	4+90.2		#1331		2215 W. Maple		12-11-25	
	5+0	111.14	106.82	4.32		5+12.3							
						5+38		#919		2213 W. Maple		8-20-25	
						5+62.7							
						5+88		#427				3-7-24	
	6+0	111.35	106.92	4.43		6+13.5		#918		2209 W. Maple		8-20-25	
						6+39							
					6+84	6+64		#780		2205 W. Maple		7-10-06	
	7+0	111.25	107.02	4.23		7+11.4		#1069		2203 W. Maple		9-15-26	
						7+33.5						11-30-73	
						7+62						9-28-25	
						7+87		#38749		2201 W. Maple		5-8-73	
	8+0	111.42	107.12	4.30		8+11		#1316				12-9-25	
	8+60	111.79	107.18	4.61	8+57	8+36							
Ext. of LAT. 4 SUB. A S.S. 21	0+00	111.63	106.60	5.0	Existing M.H.								
	1+00	111.70	106.80	4.9									
								4440-00	2004-20365	320 R. St. Clair		2-12-04	
								121 (E)	7555			7-17-58	
		111.50	106.86	4.6	1+30 O.H.								
#3261	412 S. Sedgwick			5-6-81	VanWhite	(wye repair replaced bkg sewer house to main)							
R-1999-01158-11719-2237 W Maple - Wichita Exc -	4" SCH 40 - Wye Repair 55' E of MH 3+50 (4+05) 4" trap installed, 3H22 - Replaced entire line - no alley cut												

#1277 & #1278 - Top - 421-423 S. Sedgwick - 12-5-28 R.H. Anderson.
 #1752 - Private line - 429 S. Sedgwick - 12-20-29 - Wayne H. Warren.
 #408 - Top - 316 S. St. Clair - Moore - Robertson - 4-22-30
 #534 - Top - 318 S. St. Clair - Tess Hanna - 5-26-30
 #1572 - Top - 319 S. St. Clair - H.J. Geile - 6-1-44
 #1846 - Top - 420 S. Meridian - 12-8-44 - Geo. Sargent - 12-17-73 - at Henning (2+20.3)
 #571 - Top at 1+76 - 315 S. St. Clair - 8-9-47 - Riggs Pibq.
 Receipt - #48303 - wye - 2202 W. Maple - 1-30-57 Callison Pibq.
 #7355 - 320 S. St. Clair - Al Henning - 7-17-58
 #7983 - Top - 2331 W. Maple - 9-7-58 - Smith 0+31
 10513.6088 2301 Maple - McDonald = 25-59 (2125)? (8+52.5)