

2<sup>ND</sup> (was 1<sup>ST</sup>) ST.

2	140'	6+39.6	1
4			3
6			5
8			7
10			9
12			11
14			13
16			15
18			17
20		4+25.5	19
22			21
24			23
26			25
28			27
30			29
32			31
34			33
36		2+14.2	35
38			37
40			39
42			41
44			43
46			45
48	140'		47

AVE.

AVE.

LAT. 6 - DIST. 6 - S.S. No. 21  
H.L. Miles - 1926

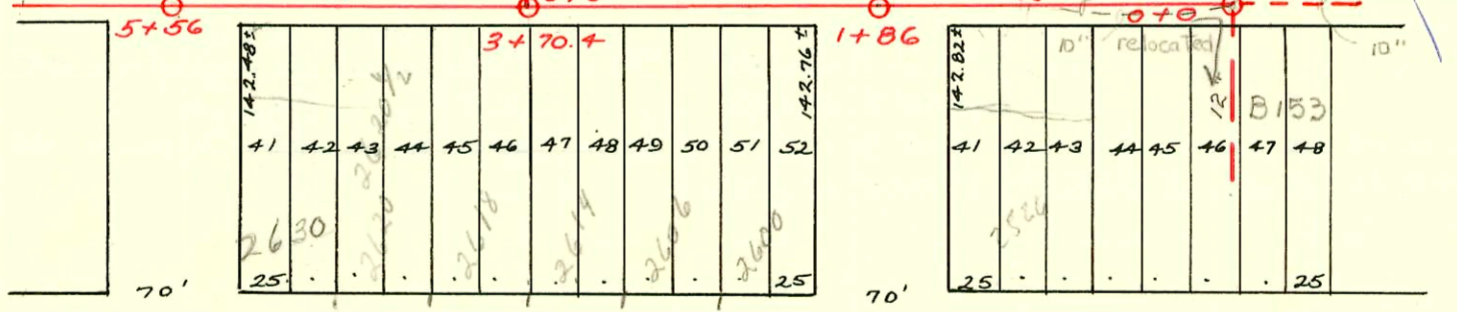
6<sup>TH</sup> ST (was Grand) ST.

21	140'	5+09.4	1
22			2
23			3
24			4
25			5
26			6
27		3+40	7
28			8
29			9
30			10
31			11
32			12
33			13
34		1+69	14
35			15
36			16
37			17
38			18
39			19
40	140'	0+0	20

EDWARDS

RICHMOND

LAT. 5 - DIST. A - S.S. No. 21  
1926 - Snyder & Meilert



DOUGLAS

AVE.

R-1999-01170-4/15/99- 206 N EDWARDS - Board man - 4" x 4" - Replacement - ITWIN CO, 2 Fernco clamps  
 2001-00479- 3/6/01- 236 N EDWARDS - AE HENNING - 3/0 w/ concrete 4' from main 20' N of MH 4+25.5 (4+00.5)  
 Ser 2003-01566 6/17/03 236 N Edwards - Mies CONST. 4" PVC City 4" TAP 20.8' N of  
 MH 4+25.5 (4+04.7) 14" fall, 2V22, 14" TWIN CO @ house, dirt alley cut

CONSTRUCTION RECORD

SERVICE RECORD

In East & West alley N. of Douglas.

In N & S. Alley bet. Edwards & Richmond.

STATION	ELEVATION		Depth	MANHOLE	4-INCH "Y" BRANCHES		No. of Permit		House Number		DATE OF PERMITS	
	Ground	Grade			North West	South East	North West	South East	North West	South East	North West	South East
0+0	115.17	107.76 Out 108.10 In	7.07	0+0		0+16 0+42 0+65.3 0+91						
1+0	115.12	108.25	6.87	1+86		1+14.6 1+37.8 2+34.3	#117 #259		2524 W. Douglas 2526 W. Douglas		2-10-28 4-13-27	
2+0	114.80	108.35	6.45			2+57.8 2+81.7 3+05.8	Connected #234		2620 W. Douglas			3-24-26
3+0	114.62	108.45	6.17	3+70.4		3+26.2 3+50.2 3+76	Connected					
4+0	114.70	108.55	6.15			3+99.1 4+22.9 4+46.7 4+70.3 4+94			2618 W. Douglas			
5+0	115.49	108.65	6.84			4+94						
5+50	114.96	108.70	6.26	5+56		5+15.2						
0+0	114.59	108.70	5.89	0+0	0+22	0+19.5	#344		114 N. Edwards		4-10-29	
					0+47.9	0+45.4						
					0+73.5	0+71		#1501		119 N. Richmond		10-21-29
1+0	114.63	108.80	5.83	1+69	1+00	0+97.5	#114	#357	122 N. Edwards	125 N. Richmond	2-9-28	6-18-31
					1+23.5	1+21		#358	129 N. Richmond			6-18-31
					1+49.5	1+47	#55		126 N. Edwards		2-18-29	
					1+76	1+73.5						
2+0	114.69	108.90	5.79		2+01.5	1+99	#13023 #7556	#1023	128 N. Edwards	133 N. Richmond	5-27-29 10-29-29	9-20-28
					2+24.9	2+22.4	#1476		138 N. Edwards	135 N. Richmond	10-16-29	
					2+51.1	2+48.6	#1080	#1427	212 N. Edwards	139 N. Richmond	12-11-46	10-7-29
					2+77.2	2+74.7		#1262	142 N. Edwards			12-3-28
3+0	114.79	109.00	5.79	3+40	3+00.5	2+98	#39				1-25-29	
					3+24.5	3+22						
					3+50.4	3+47.9	#250	#505	152 N. Edwards	139 N. Richmond	3-27-29	10-4-37
					3+76.8	3+74.3	#388		146 N. Edwards		4-17-29	
4+0	114.96	109.10	5.86		4+03	4+00.5		#78		143 N. Richmond		2-27-29
					4+26.2	4+23.7		#27		155 N. Richmond		1-21-29
					4+52.2	4+49.7	#680		158 N. Edwards		6-6-28	
5+0	115.39	109.20	6.19		4+78.2	4+75.7						
5+09.4	115.34	109.21	6.13	5+09.4	5+05.2	5+02.7	#126	#79	158 N. Edwards	157 N. Richmond	3-7-29	2-27-29
0+0	115.34	109.19	6.15	0+0	0+70.9	0+68.4			204 N. Edwards	201 N. Richmond	8-27-29	3-27-29
					0+97	0+94.5	#155	#251				
1+0	115.91	109.35	6.56		1+19.6	1+17.1			206 N. Edwards	205 N. Richmond	11-15-29	4-30-29
					1+47.3	1+44.8	#1154	#453				
					1+72.6	1+70.1				209 N. Richmond		4-30-29
2+0	115.47	109.45	6.02	2+14.2	1+98.2	1+95.7		#454				
					2+23.7	2+21.2			218 N. Edwards	217 N. Richmond	9-6-29	6-14-29
					2+46.1	2+43.6	#1234	#707		221 N. Richmond		9-9-26
					2+71.6	2+69.1		#769	220 N. Edwards		7-23-28	
3+0	114.95	109.55	5.40		2+96.9	2+94.4	#787	#332		227 N. Richmond		4-4-28
					3+21.5	3+19			228 N. Edwards		5-9-29	
					3+46.9	3+44.4	#525					
					3+72.9	3+70.4			232 N. Edwards			
					3+97.8	3+95.3	#732	#2181	236 N. Edwards	233 N. Richmond	6-19-29	4-22-48
4+0	115.44	109.65	5.79	4+25.5	4+21.2	4+18.7	#1555	#863	236 N. Edwards	237 N. Richmond	3-6-01	10-6-47
					4+46.3	4+43.8						
					4+71	4+68.5			242 N. Edwards		5-21-29	
					4+97.1	4+94.6	#843				7-9-29	
5+0	115.51	109.75	5.76		5+22.1	5+19.6			248 N. Edwards	259 N. Richmond	7-9-29	12-5-27
					5+47.6	5+45.1	#842	#1077		251 N. Richmond		10-21-41
					5+72.4	5+69.9	#466	#976				10-27-30
6+0	116.84	109.85	6.99		5+97.6	5+95.1		#1094		2611 W. Douglas		8-19-29
6+39.6	116.54	109.89	6.65	6+39.6	6+23.5	6+21	#339		254 N. Edwards		4-10-30	

#4653 - Top - 2600 W. Douglas - 3-26-53 - R.K. Ray.  
 Top - 255 N. Richmond - 10-27-30 - #975 - E.L. Stewart.  
 #813 Top - 2526 W. Douglas - 4-19-38 - F. La Foy.  
 B 2596 - 251 N. Richmond - 1-5-65 - Top (5+76.9)  
 #91-29255-7 - 8/9/91 - 212 N. Edwards - Henning (180' N of MH 50. 4" clay)