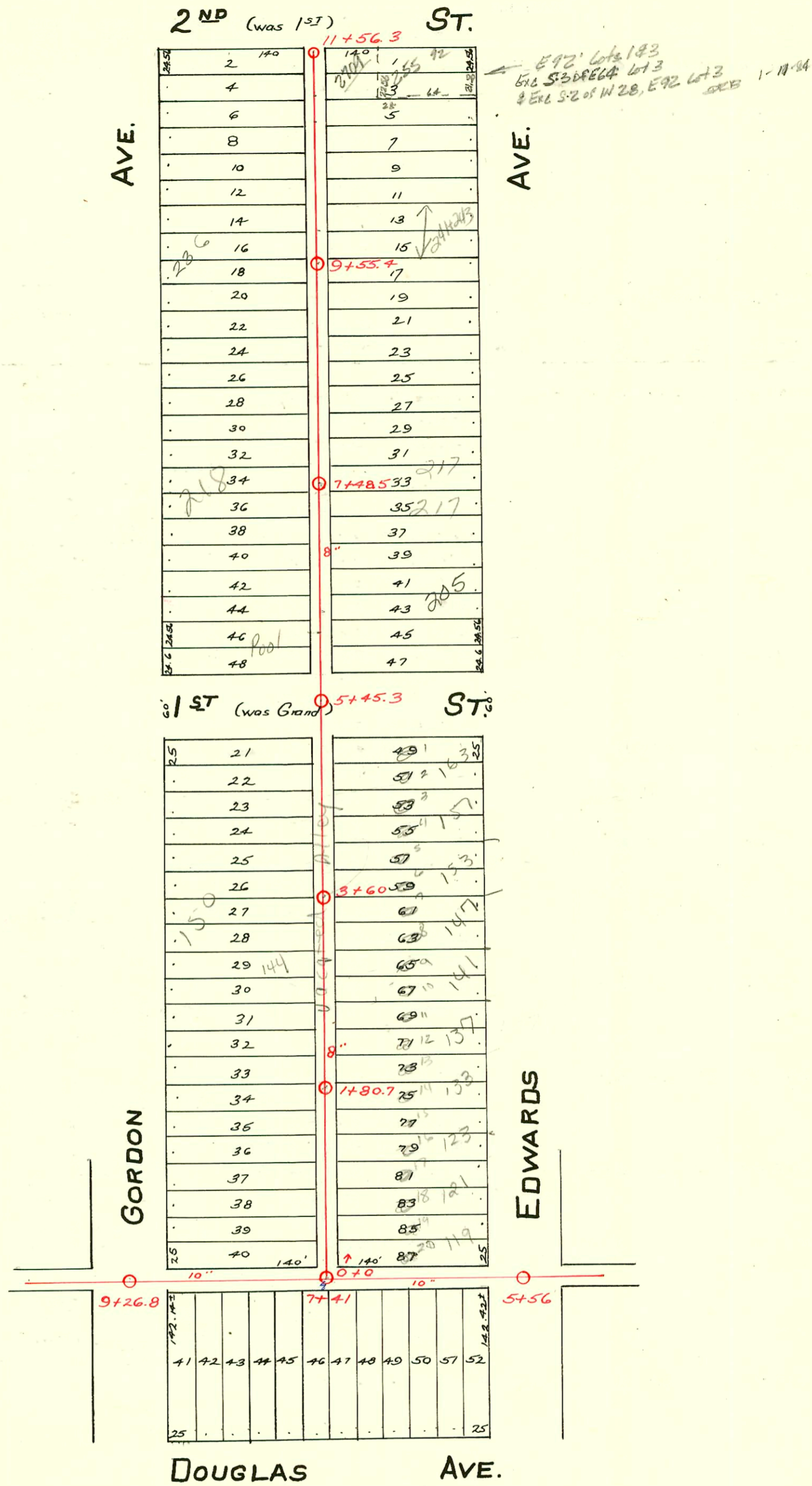


LAT. 5th DIST. A - S.S. No. 21
1926 - Snyder & Meilert



CONSTRUCTION RECORD

SERVICE RECORD

In Alley No. of Douglas, Edwards to Gordon.

In alley bet Gordon & Edwards, Alley No. of Douglas to 2nd NP

STATION	ELEVATION		Depth	MANHOLE	4-INCH "Y" BRANCHES		No. of Permit		House Number		DATE OF PERMITS	
	Ground	Grade			North West	South East	North West	South East	North West	South East	North West	South East
5+50	114.96	108.70	6.26	5+56		5+90.9						
6+0	114.79	108.75	6.04			6+14	#143		2702 W. Douglas			3-25-31
7+0	115.03	108.85	6.18			6+37.3						
						6+60.8	#123		2706 W. Douglas			2-22-26
				7+41		6+84						
						7+08.3	#1026		2706 W. Douglas			11-21-27
						7+32	#1954		2716 W. Douglas			4-5-48
						7+55.2						
8+0	115.02	108.95	6.07			7+78.2						
						8+01.5	#2508		2722 W. Douglas			7-20-40
9+0	115.64	109.05	6.59			8+25	#2056		2728 W. Douglas			12-23-39
						8+48.3						
9+50	115.28	109.10	6.18	9+26.8		8+71.6						
0+0	113.74	109.04	4.70	0+0	0+24.3	0+21.8	#791		121 N. Edwards			9-19-27
					0+50.3	0+47.8						
					0+76.5	0+74	#1760		128 N. Gordon			8-7-39
					1+02	0+99.5	#661		123 N. Gordon			7-1-30
1+0	115.46	109.14	6.32		1+28.5	1+26	#1319		126 N. Gordon			1-25-47
					1+52	1+49.5	#1092		119 N. Edwards			12-9-27
					1+75.5	1+73	#2344		132 N. Gordon			5-27-40
				1+80.7	2+02.1	1+99.6	#2194		133 N. Edwards			11-30-45
2+0	116.01	109.24	6.77		2+27.6	2+25.1	#79		138 N. Gordon			5-9-46
					2+54	2+51.5	#487		139 N. Edwards			5-7-28
					2+76.9	2+74.4	#608		144 N. Gordon			9-12-41
3+0	115.49	109.34	6.15		3+03.2	3+00.7	#1146		150 N. Gordon			7-24-29
					3+28.8	3+26.3	#270		141 N. Edwards			12-20-46
				3+60	3+52.5	3+50			147 N. Edwards			3-30-29
					3+78.5	3+76	#691		156 N. Gordon			5-29-42
4+0	116.46	109.44	6.02		4+04.5	4+02	#985		153 N. Edwards			9-3-47
					4+30	4+27.5	#1173		162 N. Gordon			10-7-48
					4+55.8	4+53.3	#153		157 N. Edwards			5-23-29
					4+81.8	4+79.3			163 N. Edwards			6-6-47
5+0	117.10	109.54	7.56		5+05.3	5+02.8						
				5+45.3	5+82.5	5+80	#97		202 N. Gordon			6-9-28
					6+08.5	6+06	#1314		201 N. Edwards			2-11-26
6+0	115.32	109.64	5.68		6+31.8	6+29.3	#162		206 N. Gordon			9-18-29
					6+57.5	6+55	#50		205 N. Edwards			3-6-26
					6+84	6+81.5			211 N. Edwards			2-20-28
7+0	114.96	109.74	5.22		7+07.2	7+04.7	#20		216 N. Gordon			6-10-35
					7+30	7+27.5	#1330		218 N. Gordon			4-6-36
				7+48.5	7+55.8	7+53.3	#622		217 N. Edwards			9-20-29
					7+82.1	7+79.6	#497		217 N. Edwards			8-16-48
					8+08	8+05.5	#716		219 N. Edwards			5-13-30
8+0	114.76	109.84	4.92		8+31.3	8+28.8						
					8+57.5	8+55	#1043		220 N. Gordon			8-12-29
					8+83.5	8+81	#1061		237 N. Edwards			12-9-30
9+0	115.03	109.94	5.09		9+09.8	9+07.3	#1020		232 N. Gordon			12-1-46
				9+55.4	9+35.7	9+33.2	#453		227 N. Edwards			5-18-28
					9+62.2	9+59.7	#422		236 N. Gordon			7-31-06
					9+87.5	9+85	#828		237 N. Edwards			7-22-47
10+0	114.98	110.04	4.94		10+11.5	10+09	#716		246 N. Gordon			9-30-47
					10+37.2	10+34.7	#3789		241 N. Edwards			7-8-41
					10+63.5	10+61	#2490					
					10+89.5	10+87	#5125		250 N. Gordon			5-17-48
11+0	115.26	110.14	5.12		11+15.9	11+13.4	#1214		251 N. Edwards			7-21-30
					11+56.3	11+41.5	#456		256 N. Gordon			5-8-53
						11+39			251 N. Edwards			10-15-48
												5-5-30

3005-00225 - 151N Edwards - repair - replaced upper 40' only - American SWR - 2-4-05

98-19860-7 19/4/88 - 205 N Edwards - Whitetail SVC - 4" SCH 40 - 4" WPE repaired 83' N of MH 5+45.3 (6+28.3) entire line - dirt talk cut

#295 - Tap - 2709 W. 2nd NP - 7-27-36 - Carl E Carr.
 #1554 - Tap - 128 N. Gordon - 5-12-39 - F.R. Watson - Connected to East & West Sewer.
 #4971 - 255 N. A-27-53 - Frederick Pibq. - Used old connection.