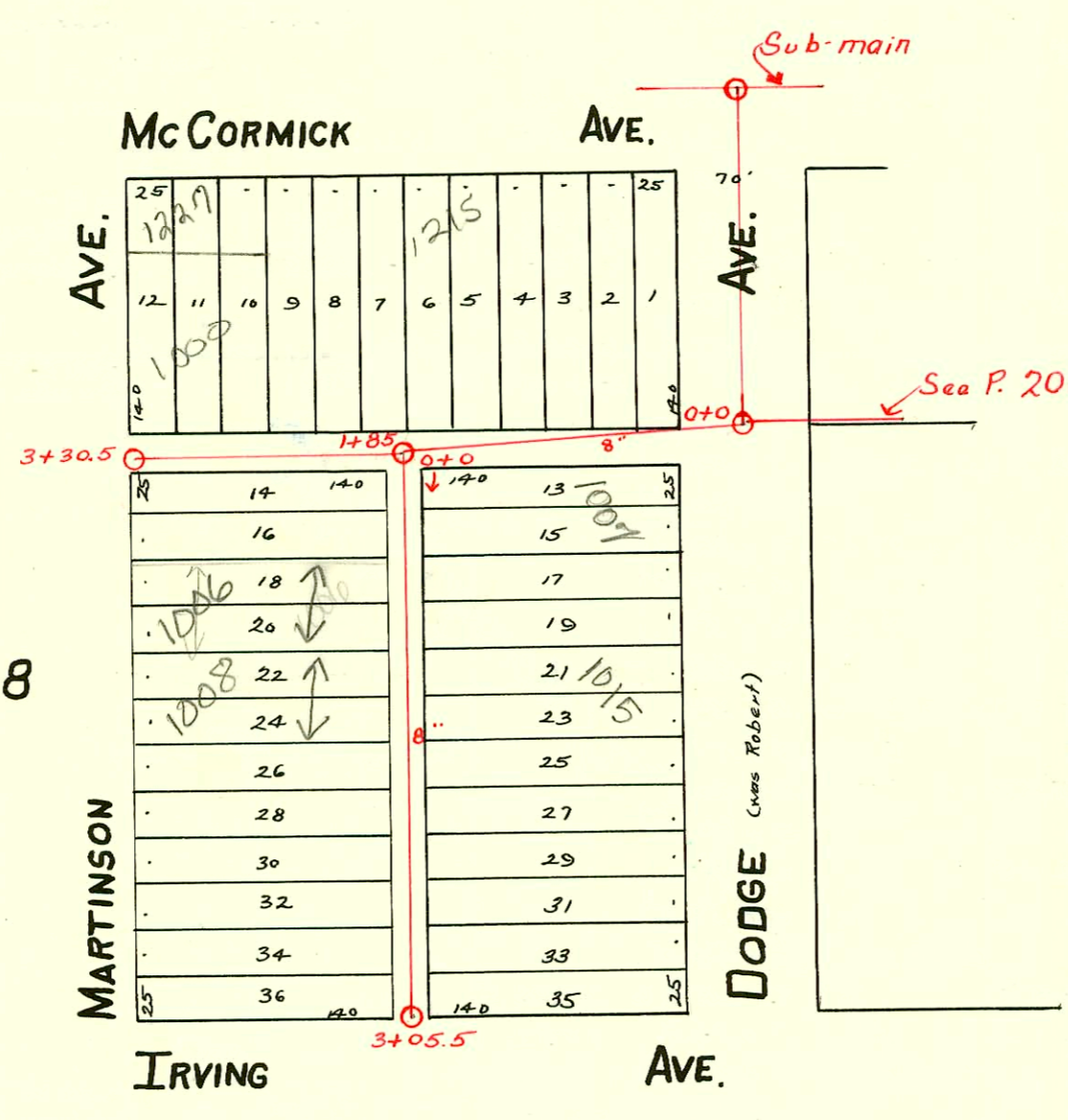


LAT. 8 - DIST A - S.S. No. 21  
H.L. MILES - 1927

LAT. F - S.S. No. 8  
Miles - 1927



1227 w McCormick & 1000 S Martinson  
Both on same line Tapped at 39.7' E of  
Mbl 37305 per 040 test by sewer Maint  
on 12/27/07. Owner of 1227 McCormick will  
TRY to obtain priv. & SM to separate away and  
have new tap See E Mail  
OK

CONSTRUCTION RECORD

SERVICE RECORD

STATION	ELEVATION		Depth	MANHOLE	4-INCH "Y" BRANCHES		No. of Permit		House Number		DATE OF PERMITS	
	Ground	Grade			North West	South East	North West	South East	North West	South East	North West	South East
Line in W.S. Hiram, & McCormick to Alley South.	0+0	106.80	103.5	3.30	0+0							
	1+0	107.53	103.6	3.93								
	1+85.8	106.77	103.69	3.08	1+85.8							
In Alley So. of McCormick, Hiram to Bonn.	0+0	106.77	103.69	3.08	0+0	4" 40 PVC - CO 0+61.6	#2093 #1678	2009 2007 R McCormick			6-20-03 11-22-48	
	1+0	106.79	103.79	3.0		0+87.3 1+12.6 1+38.2 1+64	#1678	2011 McCormick			2-27-48	
	2+0	107.10	103.89	3.21		1+96.2 2+14.5 2+40 2+65.2 2+91	#3410 #440 #4730 #2155	2017 McCormick 2025 McCormick 2027 McCormick 2031 McCormick			12-18-50 3-14-44 5-24-51 3-14-49	
	3+0	106.86	103.99	2.87		3+15.8 3+29.7 3+42	2003-02439 C79621	2037 R McCormick			9-19-03 5-22-75	
	3+89.6	107.02	104.08	2.94	3+89.6	3+67.3						
In Alley bet. Hiram & Bonn, Alley S. of McCormick to Alley N. of Irving.	0+0	106.97	103.90	3.07	0+0	0+14.3 0+39.1 0+64.5	0+11.8 0+36.6	#3239	918 Bonn	923 Hiram	2-7-50	1-15-47
	1+0	107.12	104.00	3.12		0+89.1 1+15.5 1+41.1 1+66.3	0+87.1 1+13 1+38.6 1+63.8	#2637 #11 #1842	924 Bonn 926 Bonn	927 Hiram	2-7-05 9-13-40 3-3-33	
	2+0	106.73	104.10	2.63		1+91.7 2+17.5 2+42.9	1+89.2 2+15 2+40.4	#1746 #3053	932 Bonn	931 Hiram 1035 Hiram	7-25-50	8-3-50 1-13-50
	2+95.3	106.77	104.20	2.57	2+95.3	2+68.5	2+66					
In Alley N. of Irving - Hiram to Bonn - Line E. from N. & S. Alley.	0+0	106.78	104.20	2.58	0+0		0+09 0+34.5 0+60 0+85.6 1+10.9 1+36.7	#1524 #2519 #9	2016 Irving 2010 Irving		5-5-44 7-23-40	
	1+0	106.78	104.30	2.48			1+64.5	C3960	2006 Irving		4-15-49	
	1+79.5	106.68	104.38	2.30	1+79.5				2002 Irving		6-21-73	
Line W. from N. & S. Alley	0+0	106.78	104.20	2.58	0+0		0+09 0+34.6 0+60 0+85.7	#10338 #257	2020 Irving		2-28-80 10-30-35	
	1+0	106.78	104.30	2.48			1+10.8 1+36.5	57842 57842	2024 Irving		4-24-76	
	1+80	106.88	104.38	2.50	1+80		1+62.2					
Alley So. of McCormick, Dodge to Martinson	0+0	107.58	103.10	4.48	0+0	0+42.5 0+68.3 0+92.8		#1724	1207 McCormick		7-20-39	
	1+0	108.29	103.20	5.09		1+18 1+43		#925357 #1153	1211 McCormick		4-17-92 8-27-29	
	1+85	107.29	103.29	4.0	1+85	1+68.8		#2736	1217 McCormick		2-26-46	
	2+0	107.57	103.31	4.26		2+19 2+44.8		#2735	1219 McCormick		2-26-46	
	3+0	107.40	103.41	3.99		2+70 2+96			1227 McCormick			
	3+30.5	107.34	103.45	3.89	3+30.5	3+21			SEP 1945 OPP. PAGE			
In N. & S. Alley bet. Dodge & Martinson.	0+0	107.36	103.28	4.08	0+0	0+19.2 0+70.2 0+96	0+16.7 0+55.7 0+93.5	#83 #531	1006 S. 1011 S. Martinson Dodge		4-26-35 6-25-27	
	1+0	107.28	103.38	3.90		1+21.1 1+46.5 1+72 1+97.3	1+18.6 1+44 1+69.5 1+94.8	#63 #532 #2419 #533	2002-00810 #63 1008 S. 1015 S. Martinson Dodge		3-19-02 4-15-32 6-25-27	3-27-03 6-25-27
	2+0	107.36	103.48	3.88		2+22.5 2+48.5 2+63.4	2+20 2+46 2+60.9	#1996 #1139 #2188	1036 S. 1021 S. Martinson Dodge		9-17-56 6-25-27	
	3+05.5	106.24	103.59	2.65	3+05.5	2+97.1	2+94.6		1038 S. 1027 S. Martinson Dodge		11-28-39 12-27-27	
									1042 S. 1031 S. Martinson Dodge		4-3-40 6-25-27	

997287 #930 - Tap - 2001 McCormick - Riggs Pibq. - 9-14-48  
 #753 - Tap - 1229 McCormick - Simmons Pibq. - 9-7-27  
 #273 - Tap - 921 Hiram - 3-26-28  
 Private line - 906 S. Martinson - #1063 - 12-9-30 - R.H. Anderson.  
 Tap - #4391 - 940 Bonn - Eugene Reynolds - 4-18-51  
 Tap - #5395 - 1039 Hiram - Frederick - 7-30-51  
 #5615 - Tap - 924 Bonn - 8-16-51 - Joe McDonald.  
 #626 - Tap - 1014 Martinson - S & B Pibq. - 4-25-56  
 #16487 tap - Hiram 1039 S. Hiram - Covers Pibq. 12-17-62 (2+56.3)  
 #16505 private line - Bonn - 1039 S. Hiram - Bonn Pibq. 12-17-62