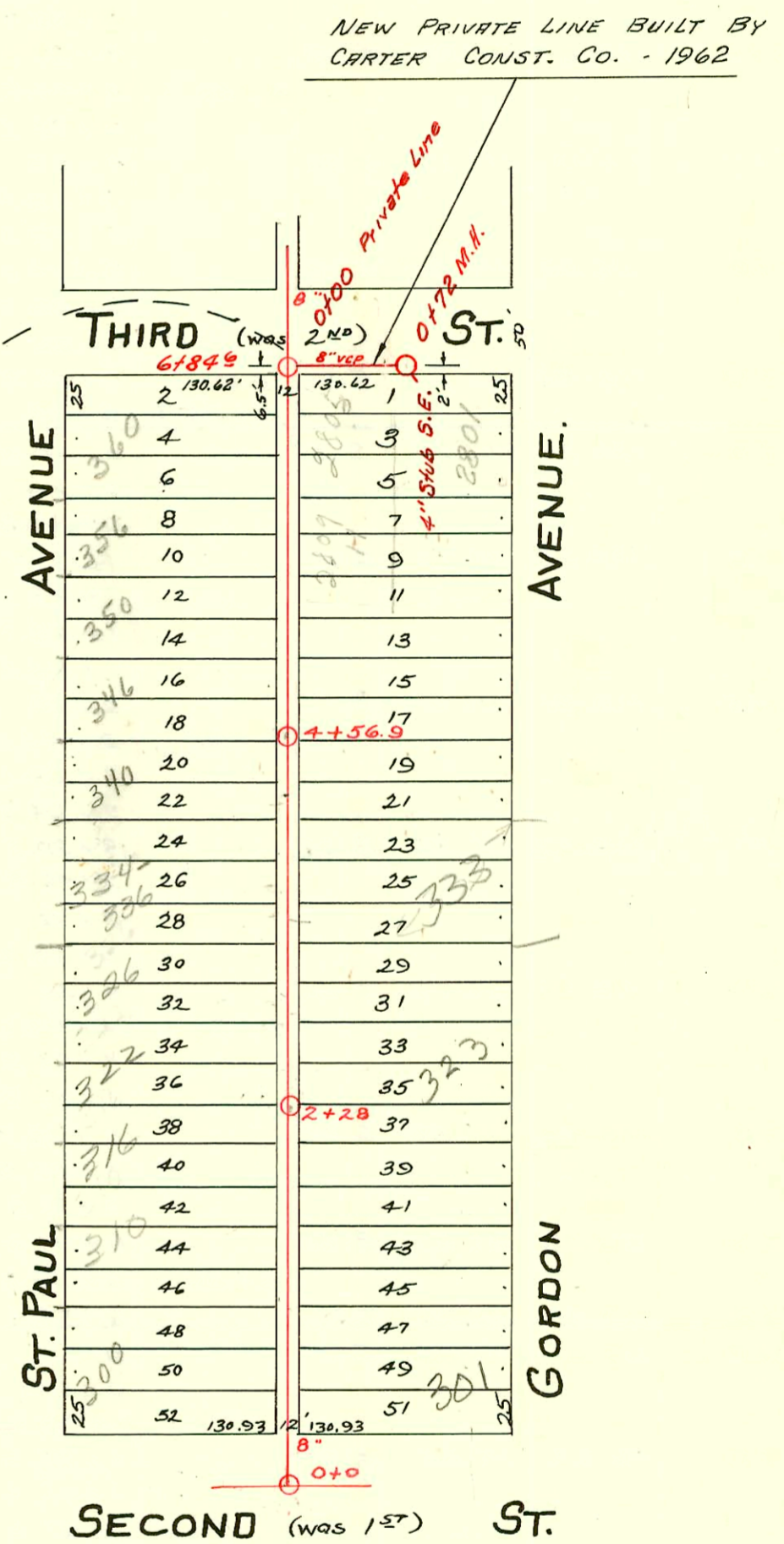


LAT. 12 - DIST. A-S.S. No. 21  
Meilert - 1928



*New line built by Carter # 16679 - 2801 W. 3rd - M.H. Lab. S.E. 3rd - State Survey 2-19-63*

2002-00144 116602 407 N Gordon - Shalloup Pkg - 4" PVC, twinco, 1045, tied to clay tile 104' N of MH 6+84(7+88) Dirt alley cut

2003-01376 5122103 2822 W 3rd Dennis Cleanout - installed 4" PVC TWINCO, SCH40 PVC, 1H22, 1H45, Replaced 6' high end

### CONSTRUCTION RECORD

### SERVICE RECORD

STATION	ELEVATION		Depth	MANHOLE	4-INCH "Y" BRANCHES		No. of Permit		House Number		DATE OF PERMITS	
	Ground	Grade			North West	South East	North West	South East	North West	South East	North West	South East
0+0	116.22	110.35	5.87	0+0	0+37.7 4" PVC-20	0+35.2 4" PVC-20	#341	#5700 #5399	2812 W. 2nd	301 N. R. Gordon	7.8-37	7.31.51 11-17-03 7.31.51
1+0	115.68	110.45	5.23		0+88.1 1+13.5 1+39.5	0+85.6 1+11 1+37		#6138				8-24-55
2+0	115.18	110.55	4.63	2+28	1+65.1 1+90.7	1+62.6 1+88.2	#5978 #1174	#27 #2056	312 N. St. Paul	311 N. Gordon	9-28-51 8-12-49	3-2-50 3-1-49
3+0	115.78	110.65	5.13		2+16.3 2+42.2 2+67	2+13.8 2+39.7 2+64.5	#1142 #2505	#2000 #650	322 N. St. Paul	323 N. Gordon	6-7-84 11-17-49	11-12-00 8-11-48
4+0	116.16	110.75	5.41		2+93 3+18.1 3+44.1	2+90.5 3+15.6 3+41.6	#2506	#781	326 N. St. Paul	329 N. Gordon	11-17-49	6-28-29
5+0	116.81	110.85	5.96		3+69.6 3+95.4	3+67.1 3+92.9	#23590 #1554	#743	334-336 N. St. Paul	333 N. Gordon	4-5-71 1-22-48	7-1-49
6+0	117.08	110.95	6.13		4+20.8 4+46.2 4+72.9	4+18.3 4+43.7 4+70.4	#556 #7361	#3020 #996	334 N. St. Paul	335 N. Gordon	6-2-30 2-1-52	4-6-81 9-14-28
7+0	Pavement 117.02	111.03 111.05	5.97	6+84.6	4+98 5+23.5 5+49	4+95.5 5+21 5+46.5	#10229 #1539	#977 #2349 #6965	346 N. St. Paul	337 N. Gordon	5-3-48	9-11-28
8+0	117.35	111.15	6.20		5+74 6+00 6+25.5	5+71.5 5+97.5 6+23	#1404	#604	350 N. St. Paul	2809 W. 3rd	7.5.50	11-13-53
9+0	117.19	111.25	5.94	9+13.7	6+51 7+40.5 7+63.3	6+48.5 7+38 7+63.8	#1404 #352	#604 #992 #3743	360 N. St. Paul	401 N. Gordon	11-3-48	5-24-29 9-13-28
10+0	117.87	111.35	6.52		7+91.5 8+17.5 8+43.9	7+89 8+15 8+41.4	#860 #852	#931	406 N. St. Paul	407 N. Gordon	7-12-29 12-31-41	6-26-41 8-29-28
11+0	118.41	111.45	6.96		8+69 8+95 9+20.5	8+66.5 8+92.5 9+18	#1660		418 N. St. Paul		5-1-42	
12+0	118.42	111.55	6.87	11+40.8	9+45.9 9+71.8 9+97.5	9+43.4 9+69.3 9+95	#1361 #1362	#762	422 N. St. Paul	421 N. Gordon	1-2-48	12-10-41
13+0	117.99	111.65	6.34		10+23 10+48.5 10+74.2	10+20.5 10+46 10+71.7	#1390	#729	428 N. St. Paul	427 N. Gordon	1-2-48	1-7-48
14+0	118.39	111.75	6.64		11+00 11+25.5 11+51.2	10+97.5 11+23 11+48.7	#263	#909	430 N. St. Paul	425 N. Gordon	9-30-46	8-27-28
15+0	118.74	111.85	6.89		11+77.2 12+02.7 12+28.4	11+74.7 12+00.2 12+25.9	#932	#365	444 N. St. Paul	445 N. Gordon	5-11-31	3-13-00 9-14-36
16+0	119.33	111.95	7.38	16+33.7	12+53.7 12+79 13+04.8	12+51.2 12+76.5 13+02.3	#1061 #506	#742 #4217	450 N. St. Paul	451 N. Gordon	11-4-47	9-11-47
17+0	117.55	112.05	5.50		13+31.1 14+13.7 14+39	13+28.6 14+11.2 14+36.5	#1105 #1480	#928	454 N. St. Paul	455-57 N. Gordon	8-13-46	4-13-55
18+0	117.53	112.15	5.38		14+64.9 14+90 15+15.3	14+62.4 14+87.5 15+12.8	#1566		440 N. St. Paul	431 N. Gordon	9-26-38	8-29-28
18+74.8	118.03	112.23	5.80	18+74.8	15+40.5 15+65.7 15+92.1	15+38 15+63.2 15+89.6	#1654	#1535	502 N. St. Paul	501 N. Gordon	10-16-29	4-10-31
Private Line	117.10 116.18	111.03 111.18	6.1 5.0	0+00 0+73.2	17+96.4 18+22.3 18+47.5	17+93.9 18+19.8 18+45	#218 #4416 #5139	#64550	512 N. St. Paul	512 N. St. Paul	11-22-48 6-17-39	
					18+68	—			516 N. St. Paul	517 N. Gordon	10-25-29	
									520 N. St. Paul	519 N. Gordon	1-20-53	7-11-28
									526 N. St. Paul	523 N. Gordon	5-6-53	
									529 N. St. Paul	525 N. Gordon	5-6-29 5-19-30	
									532 N. St. Paul		11-7-38	
									536 N. St. Paul	527-29 W. Gordon	5-13-49	12-22-77
									542 N. St. Paul		3-11-53	
									546 N. St. Paul		5-8-53	
									2801 W. 3rd		2-19-63	

#928-Top-435 N. Gordon - 10-15-47- Jim Hanna  
 #929-Top-431 N. Gordon - 10-15-47- Jim Hanna.  
 #893-Private line-350 N. St. Paul - 9-11-48- Tess Hanna  
 SWR2000-02862 - 503 N. Gordon - Tap @ 108' N. y. m. H. shallow, clo @ base, (U)45H, (U)22H, (U)45V - Wichita Ex 11/10