

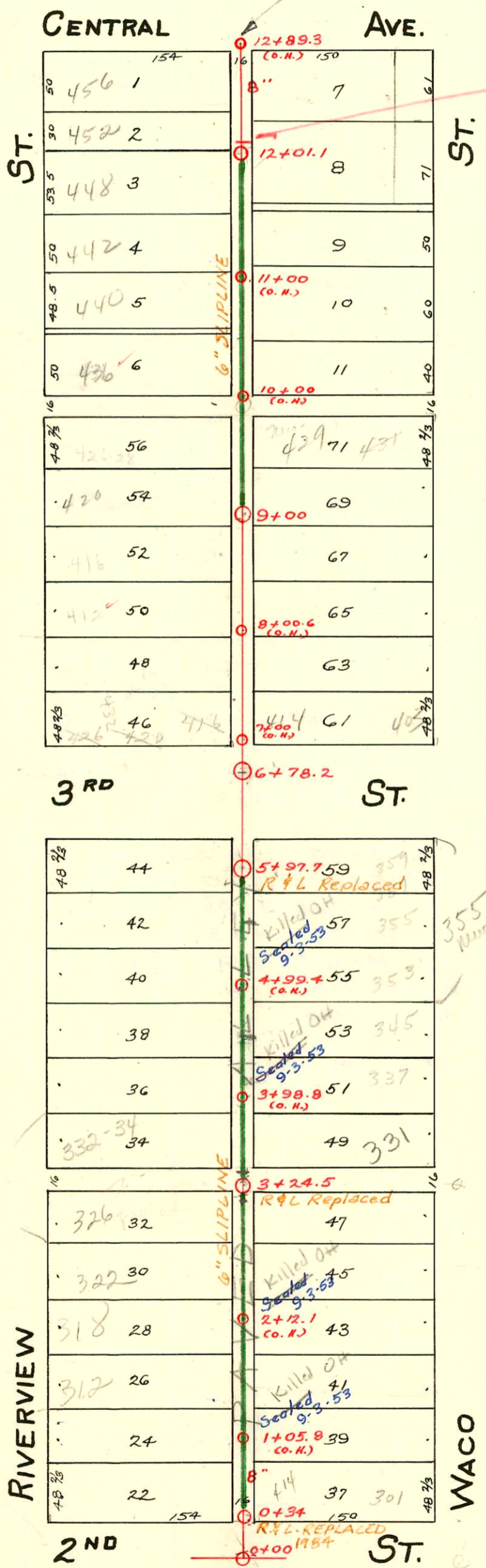
S.S. No. 17-1910

SERVICE RECORD

DATE OF RECORD

TRAP

Sealed off to north  
5-9-66



PLUGGED 1970

- 10+48 6" SERVICE E.S-17-84
- 10+09 6" SERVICE EAST 5-17-84
- 9+43.5 6" SERVICE WEST 5-9-84
- 9+42 6" SERVICE EAST 5-9-84

Sewer Rehab. & Mosley St. Relief Sewer  
Dist. 1 & 20, N. of Douglas  
Built By Stannard Const.  
#68-80-990-80271-000-000-001  
Booked 7-25-85 FROM AS BUILT

- 355  
5+49 6" SERVICE EAST 5-10-84
- 335  
4+09.5 6" SERVICE EAST 5-14-84
- 331  
3+35 6" SERVICE EAST. 5-15-84

N/C # 3474 - 432 W. 3rd 6-10-81 Jake Kuitland (8+29.05)  
 N/C 4228 - 432 W. 3rd 10-1-81 Martin Dendlinger, Jr - Install 4" conn (78.10 N 8m H in 353) (7+56.3)  
 % # 5187 (321 N WACO) 2-16-82 Henry (24' N of 0+34.0) (0+58.0) on 8" MAIN

CONSTRUCTION RECORD

SERVICE RECORD

STATION	ELEVATION		Depth	MANHOLE	4-INCH "Y" BRANCHES		No. of Permit		House Number		DATE OF PERMITS	
	Ground	Grade			North West	South East	North West	South East	North West	South East	North West	South East
19+0	118.50	113.45	5.05	17+88.6	18+51.9 18+77.5	18+49.4 18+75.0	#281657 #2951	#2380	548 N.R. Mt. Carmel	547 N. Custer	11-1-43 12-29-49	11-9-49
20+0	118.42	113.55	4.87	19+97.2	19+52.6 19+78.3	19+50.1 19+75.8	#2952	#1033	554 N.R. Mt. Carmel	555 N. Custer	12-29-49	8-5-38
21+0	118.37	113.65	4.72	20+97.2	20+63.4 20+89.3	20+60.9 20+86.8	#623 #624	#2450	3108 Newell 608 Mt. Carmel	609 N. Custer	4-13-54 4-13-54	11-19-63 6-21-43
22+0	118.86	113.75	5.11	22+13.4	21+40.8 21+66.6	21+38.3 21+64.1	#14	#653	611 N. Custer	618 N. 615 N. Mt. Carmel Custer	2-29-72 2-3-54	5-14-48 4-16-54
23+0	119.09	113.85	5.24	22+64.7	22+41.5 22+64.7	22+39 22+62.2	#13	#21055	622 N.R. Mt. Carmel	631 N. Custer	2-3-54	7-11-88
24+0	118.89	113.95	4.94	23+41.3	23+69.8 23+95.8	23+67.3 23+93.3						
24+30	119.00	113.98	5.02	24+30	24+19.5							
12	112.26	108.40	3.86	12+01.1	12+39 12+13.5	12+44 12+05	C13864 connected	#48	431 N. Waco	431 N. Waco	4-30-69	3-12-12
11	111.76	108.30	3.46	10+92.5	11+72 11+46.5	11+74.5 11+44	C131691 connected	#250	448 N. Riverview	448 N. Riverview	4-18-72	4-25-14
10	112.06	108.20	3.86	10+66.5	10+18 10+92.5	10+15.5 10+90	#95	#98	437 N. Waco	437 N. Waco	6-21-71	4-4-12
9	112.56	108.10	4.46	9+00	9+51 8+95	9+41 8+82.5	C12889 connected	#93	426 N. Riverview	431 N. Waco	2-18-69	4-3-12
8	112.66	108.00	4.66	8+06	8+61.5 8+06	8+59 8+26	#671 #432	#469	416 S. Riverview	415 N. Waco	12-8-10 7-9-52	3-18-12 3-21-12
7	112.06	107.90	4.16	7+46	7+60.5 7+46	7+58 7+43.5	#495	#462	416-420 N. Waco	403 N. Waco	6-21-71	4-18-72 10-26-12 10-10-12
6	113.32	107.80	5.52	6+78.2	6+80 6+72.5	6+12.5	connected	#541	357 N. Waco	357 N. Waco	9-3-18	6-17-68 2-27-18
5	113.82	107.70	6.12	5+92.7	5+64.5 5+39.5	5+62 5+37	#625	#1149	358 Riverview	353 N. Waco	6-10-63 10-30-18	6-17-68
4	113.82	6.22		4+43	4+82 4+64.5	4+69 4+40.5	#818	#799	344 Riverview	345 N. Waco	10-14-71	1-21-65
3	114.12	107.50	6.62	3+24.5	3+94 3+76	3+91.5 3+70.5	#23019 connected	#1839	332-34 Riverview	323 N. Waco	4-26-89 7-15-67	7-17-72 9-30-49
2	113.82	107.40	6.42	2+10	2+91 2+51	2+75.5 2+48.5	C33624 connected	#33250	326 Riverview	323 N. Waco	5-2-68	6-29-72
1	113.72	107.30	6.42	1+62	1+72.5 1+62	1+91.5 1+51	#33419 connected	#61	318 Riverview	318 Riverview	7-7-72	3-18-12
0	113.32	107.20	6.12	0+34	0+78.5 0+40	0+70.5 0+40	#72	#72	301 N. Waco	301 N. Waco	1-6-66	2-2-20

5083 (309 N. Waco) Kennedy 1-21-82 (15' 5" sq. m.H.)  
 #294 - Tap - 331 N. Waco - 12-7-35 - Tess Hanna.  
 #1126 - Tap - 314 W. 2nd - 10-5-48 - R. LaFoy.  
 #6062 - Setting wye - 8-6-53 - Tess Hanna, Jr. - 427-29 W. 3rd.  
 B4764 - 329 N. Waco - Seal off - See Duffin 12-15-65 (3+91.5)  
 C-1108 - top - 429 N. Waco - Kennedy Pkg - 12-7-66 (9+69.5)  
 C14202 - top 420 Riverview - Wynn & Country - 5-23-69 (9+20)  
 C14557 - top - 355 N. Waco - Hoover Patching 6-27-69 (5+49.7)  
 C26358 - Seal off - 336 Riverview - 8-11-71 al Henning  
 C26359 - Seal off - 426 N. 2nd - 8-11-71 al Henning

8890 Campbell 8-3-83  
 3062 Kennedy, N/C, 345 N. Waco - Mini 3104.5  
 20522 2nd ST. 4140.5, 116.0 N. R. 2-15-85 (Patched)  
 C31695-440 Riverview - 4-18-72 (10+36.1)  
 SO. C31693-452 Riverview - 4/18/72 - J.C. Lamm - (12+15.1)  
 C33418 - 312 Riverview - 7-7-72 J.C. Lamm (11+43)  
 C66547 (S.O.) 414 W. 2nd - 5-24-78 al Henning  
 - INST 11 6" PVC CO 311400 - WICHITA EXC  
 266549 - 50 - 429 W. 3rd - 5-21-78 - al Henning (5+77.6)