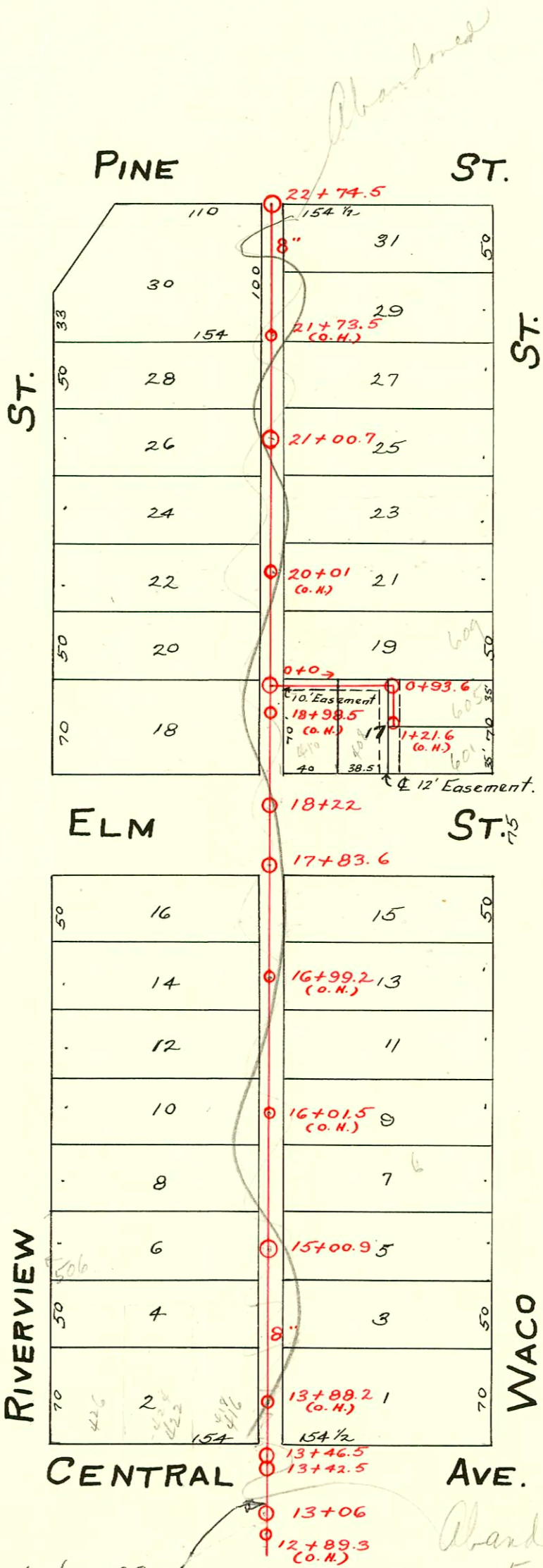


S.S. No. 17 - 1910



Private San. Sewer - Lot 17 - Lakeside Add. Callison Pibg Co. Dec., 1953. BX JF G)

CONSTRUCTION RECORD						SERVICE RECORD						
STATION	ELEVATION		Depth	MANHOLE	4-INCH "Y" BRANCHES		No. of Permit		House Number		DATE OF PERMITS	
	Ground	Grade			North West	South East	North West	South East	North West	South East	North West	South East
0+00	113.8	109.30	4.5	0+0								
	114.4	109.59	4.8	0+93.6								
1+00	114.3	109.60	4.7									
						1+05.0		#7199		605 N. Waco		12-10-53
						1+18.0		#7198		601 N. Waco		12-10-53
	114.0	109.62	4.4	1+21.6 (O.H.)								
					22+745 F.T.							
					22+69.5	22+67						
22	113.28	109.40	3.38		22+43.5	22+41						
					21+89	21+86.5						
					21+58.5		#606		638 Riverview		7-16-26	
21	113.78	109.30	4.48	21+00.7	21+07	21+56	#51			623 N. Waco		2-10-11
						20+86.5	#1076					2-23-42
					20+66	20+50.5	#666	#465				5-3-23
					20+16.5	20+14	#665					5-3-23
20	113.78	109.20	4.58			19+84	#165					4-19-12
						19+66	19+42.5	#589	#172			10-27-13
						19+22		#316				7-1-12
19	113.28	109.10	4.18			19+19.5						
					18+38							
18	112.68	109.00	3.68	18+22	Syphon							
				17+83.6	Also Y conn. in this M.H.							
					17+38	17+51.5	#20					2-10-12
17	114.08	108.90	5.18		17+13		#530					8-29-18
					16+96.5	16+94		#6				1-5-16
					16+56	16+40	#705					9-21-17
						16+22.5	#162					3-30-17
16	113.78	108.80	4.98			16+09.5						
					15+96.5		#868					4-24-19
					15+75	15+72.5	connected					
15	113.78	108.70	5.08	15+00.9	15+21.5	15+17						
					14+76.5	14+86	#1216					9-11-19
					14+34	14+31.5						
14	112.58	108.60	3.98		14+26.5	14+29	#229					3-29-11
					13+46.5							
					13+42.5							
13	111.58	108.50	3.08	13+06	Syphon							
12	112.26	108.40	3.86	12+89.3	(O.H.)							

#7197 - Private line - 408 W. Elm - 12-10-53 - Callison Pibg Co.  
 #1032 - 452 Riverview - 12-3-46 - LaFoy Pibg Co. - (no record of wye used for this location)  
 #925 - Top - 410 W. Elm - 4-17-52 - W.B. Carter Const. Co.  
 #10815 top - 416 W. Elm - 7-1-59 - 19+45  
 #8577 - Seal off - 529 N. Waco - 12-16-63 - T.M. Tunley  
 #8578 - Seal off - 609 N. Waco - 12-16-63 - T.M. Tunley  
 #1536 - Seal off - 410 W. Elm - Cherry Pibg - 6-11-64