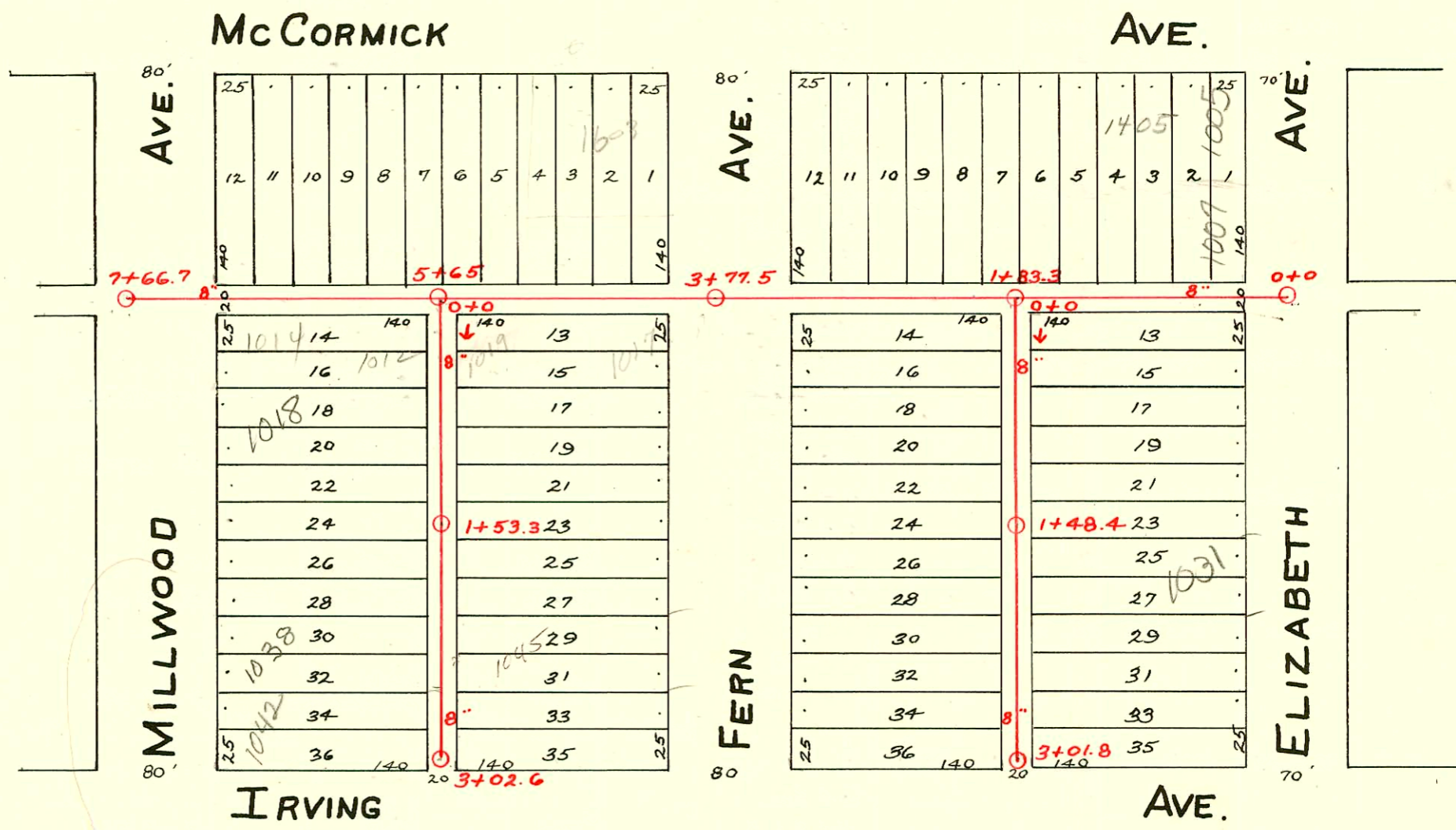


LAT. - DIST. A - S.S. No. 21



2006-00209 - 1053 W McCormick - 1/24/06 - American Sewer - 4" sch 40 PVC, 4" @ 10' @ 10' - 1/24/06

CONSTRUCTION RECORD

SERVICE RECORD

Line in E & W Alley No. of Irving

Line E. of Fern St.

Line E. of Millwood

STATION	ELEVATION		Depth	MANHOLE	4-INCH "Y" BRANCHES		No. of Permit		House Number		DATE OF PERMITS			
	Ground	Grade			North West	South East	North West	South East	North West	South East	North West	South East	North West	South East
0+0	106.85	102.15	4.70	0+0	0+89.8	0+92.3	#886		1437 McCormick		8-20-28			
1+0	107.21	102.25	4.96		1+35.7		01-00025		1413 McCormick		1-8-07			
					1+61.5		#469				5-1-29			
2+0	106.98	102.35	4.63	1+83.8	1+86.2				1415 McCormick		8-20-28			
					2+12		#885							
					2+37.4									
					2+63		#470		1013 Fern		5-1-29			
					2+89.3									
3+0	106.86	102.45	4.41	3+77.5	3+15.5									
4+0	107.26	102.55	4.71		4+25.3									
					4+50	4+61	#1081		1017 S. Fern		10-8-28			
					4+76.2									
5+0	107.11	102.65	4.46		5+01.5		#1023		1609 McCormick		8-8-29			
					5+27.4		#1150		1613 McCormick		5-6-52			
					5+54		#910		1513 McCormick		7-22-29			
				5+65	5+78.6									
6+0	106.58	102.75	3.83		6+04.5		#471		1517 McCormick		5-1-29			
					6+30.2									
					6+53.8	6+56.6	#976		1553 McCormick		8-2-29			
7+0	107.92	102.85	5.07		6+76.7									
7+66.7	107.92	102.92	5.00	7+66.7	6+97.2									
0+0	106.80	102.40	4.40	0+0	0+42.3	0+44.8	#947		1020 S. Fern		9-4-28			
					0+68.2	0+70.7	#698			1025 S. Elizabeth		9-23-46		
					0+91.3	0+93.8	#222							
1+0	106.77	102.50	4.27	1+48.4	1+16.6	1+19.1	#1311		1024 S. Fern		11-20-28			
					1+42.3	1+44.8	#888		1028 S. Fern		12-13-28			
					1+67.8	1+70.3	#762		1028 S. Fern		7-18-49			
					1+93.4	1+95.9			1031 S. R. Elizabeth		12-2-02	6-25-29		
2+0	106.82	102.60	4.22		2+16	2+18.5								
					2+45	2+47.5	#965	#873	1044 S. Fern	1039 S. Elizabeth	9-6-28	8-17-28		
					2+70.7	2+73.2								
					2+92.9	2+95.4	#948		1050 S. Fern		9-4-28			
3+0		102.70		3+01.8										
3+01.8	107.05	102.70	4.35											
0+0	106.84	102.73	4.11	0+0	0+44.4	0+46.9	#514		1019 S. Fern		10-25-25			
					0+69.4	0+71.9	#488		1017 S. Fern		11-25-36			
					0+95.8	0+98.3			1018 S. Millwood		5-3-29			
1+0	106.76	102.83	3.94		1+22.4	1+24.9	#827		1023 S. Fern		10-24-46			
				1+53.3	1+45.8	1+48.3	#1153		1037 S. Fern		8-24-45			
					1+72.1	1+74.6	#1185	#1029	1028 S. Millwood		1-12-59			
					1+97.8	2+00.3	#1006	#956	1043 S. Millwood	1045 S. Fern	10-9-48			
2+0	106.56	102.93	3.63		2+24	2+26.5	#541		920 S. Millwood		11-8-28	9-21-22		
					2+52.9	2+55.4			1038 S. Millwood	1045 S. Fern	3-9-01	9-5-28		
					2+76.2	2+78.7			1042 S. Millwood		7-24-61	7-29-47		
3+0				3+02.6	2+97.4	2+99.9	#943		1047 S. Fern		9-1-28			
3+02.6	106.58	103.03	3.55											

2002-03242-1031 S Elizabeth 1/2" 102 Aosh NoLeaks-4" PVC-4" wye repaired 21.9'S of mh 1+48.4 (1+70.3) Replaced entire line, twin co @house, 1415, 1422

C68352-1026 S. Fern Jack Brannon 9-14-78-Repairs (01194)

- #6360- Tap - 1645 McCormick - 9-3-53 - Utility Contractors Inc.
- #139- Private line - 1411 McCormick - 7-2-35 - L. A. Creed.
- #190- Tap - 1413 McCormick - 8-8-35 - L. A. Creed.
- #1859- Tap - 1017 S. Elizabeth - 3-25-48 - Harries Pibq. Co.
- #4910- 6" 8 wye - 860 S. Fern - Henning - 7-22-59
- #11339 - 2 1/2" 8 wye - trailer - 1014 Millwood - Dales Sewerworks - 8-26-59 6+39
- #11340 - Private line @ house - trailer
- #835 - 1026 S. Fern - trailer - Earl Queen - 8-28-63 - Tap (1+74.8)