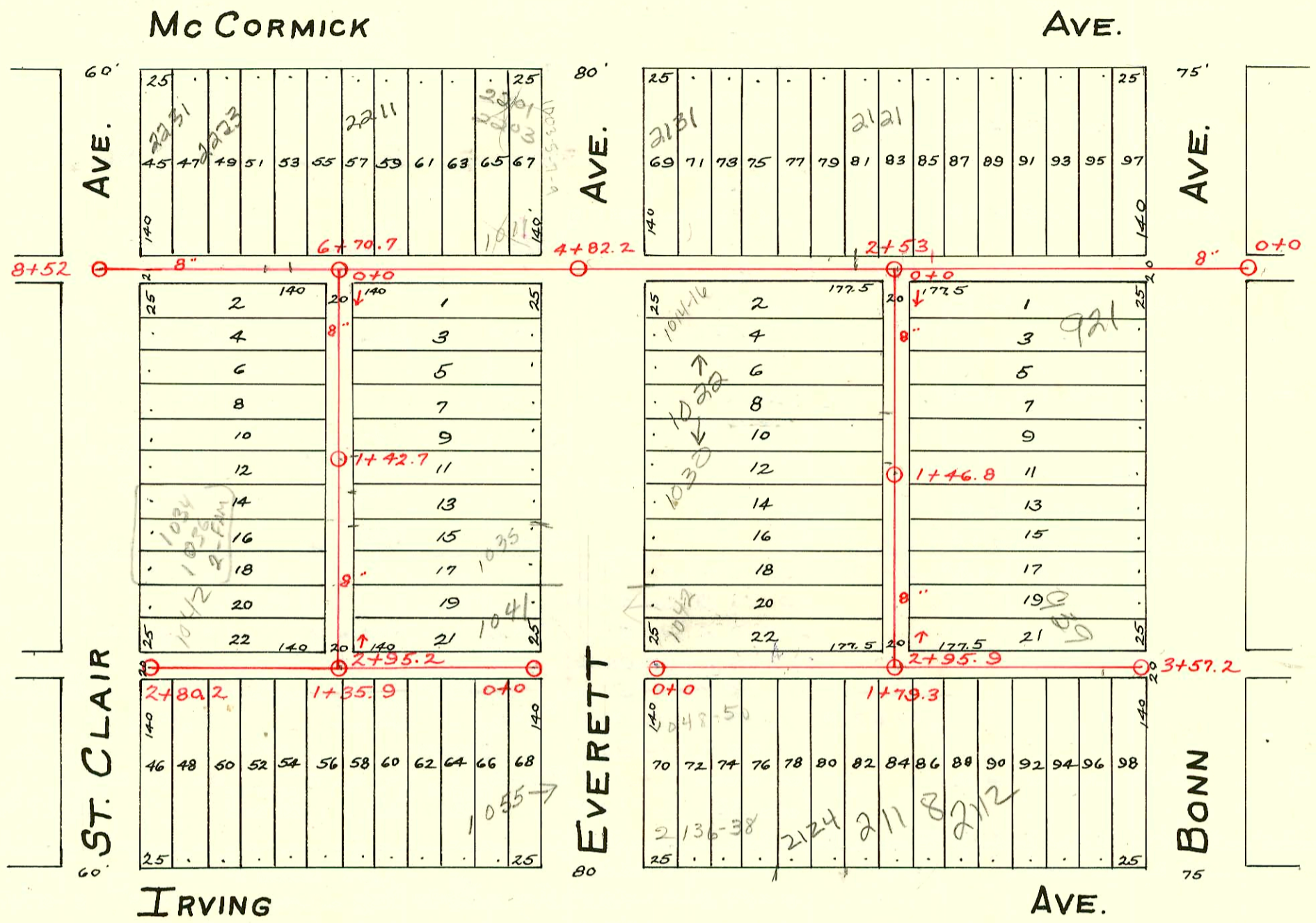


LAT. 13- DIST. A- S.S.No. 21



11551 trailer - let 60' 8" wye 10 22 Everett - 3rd P.lbg. 9-17-59. 0+73
 # 11552 trailer - private line connection 1022 Everett - 3rd P.lbg. 9-17-59
 # 16777 Trailer - Private line connection 1050 S St. Clair - JC Severs - 5-15-63

2002-01440 - 1022 S Everett - 512102 Dutchmans Drain - 4" PUC40 - Replaced all but lower 6" of line. Wye is 26.5' N of SPL, 3 Stubouts, 2 TWIN CO @ house * NO room for CO at 3rd stubout, 1145, 1122, Dirt alley cut, shallow - 14" fall

Rep-2000-01113 - 2124 W IRVING - 5/4/00 - KS DITCH - 4" SCH40 - Replaced all but lower 6', 1 TWIN CO

#93-1283-7 933 S. Bonn - Repair - 4" SDR35 - 4" Wye Replaced - 2+16.9
 79' North .14" pf shallow - Complete alley cut

CONSTRUCTION RECORD

SERVICE RECORD

M. H. East Side of Bonn.

Line in N. & S. Alley West of Bonn.

Line in E. & W. Alley N. of Irving & W. of Bonn.

Line in N. & S. Alley W. of Everett

Line in E. & W. Alley N. of Irving

STATION	ELEVATION		Depth	MANHOLE	4-INCH "Y" BRANCHES		No. of Permit		House Number		DATE OF PERMITS			
	Ground	Grade			North West	South East	North West	South East	North West	South East	North West	South East	North West	South East
0+0	106.93	103.95	2.98	0+0	0+73.5		#7232		2101 McCormick		1-25-52			
1+0	107.89	104.05	3.84		0+96	0+98.5	#1308	#238	2101 McCormick	1021 Bonn	3-26-42	3-26-29		
2+0	108.46	104.15	4.31		1+25				2107 McCormick		10-31-29			
3+0	109.11	104.25	4.86	2+53	1+50.5		#1567		2115 McCormick		11-22-48			
4+0	109.11	104.35	4.76		1+76.5				2121 McCormick	R R	9-24-02	2-10-03		
5+0	109.35	104.45	4.90	4+82.2	2+28		2003-00450		2125 McCormick		7-9-48			
6+0	108.58	104.55	4.03		2+78.7		#2319		2127 McCormick		5-1-48			
7+0	108.41	104.65	3.76		3+05	3+32.8	#1013				8-7-29			
8+0	108.13	104.75	3.38		3+58				2131 McCormick		12-5-30			
8+52				8+52	3+84				1003-5-77	Everett	2-3-84			
0+0	109.39	104.25	5.14	0+0	4+10.5		#1052		220150 McCormick		2-25-84			
1+0	109.65	104.35	5.30		5+27.3		10124		2207 B McCormick	1015	7-24-48			
2+0	109.45	104.45	5.00		5+53.7		#929		2207 B McCormick	Everett	3-23-39	12-23-29		
2+95.9	108.93	104.55	4.38	2+95.9	5+79.2	5+81.7	#407	#1755						
0+0	109.30	104.73	4.57	0+0	6+05.2		2003-00466		2211 R McCormick		9-23-03			
1+0	109.15	104.63	4.52		6+30.7		#569		2217 R McCormick		8-4-48			
2+0	109.20	104.67	2.63		6+56.3		#570		2223 McCormick		6-9-95			
3+0	106.95	104.67	2.28		6+79.7		#949		2227 McCormick	(outhouse)	3-24-45			
3+57.2	106.83	104.73	2.10	3+57.2	7+05.5	7+31.9	#1436		2231 McCormick	(Church)	10-11-66			
0+0	108.41	104.65	3.76	0+0	7+29.4	7+31.9	#1436				4-10-42			
1+0	109.91	104.75	5.16		7+54.6		#1436				10-11-66			
2+0	109.66	104.85	4.81		7+80.7									
2+95.2	109.31	104.95	4.36	2+95.2	8+06.5	8+06.5								
0+0	109.54	105.10	4.44	0+0	0+34.6	0+37.1	C23622		1014-10 S. Everett		4-7-71			
1+0	109.46	105.0	4.46	1+35.9	0+60.9	0+63.4	#1857		925 Bonn		8-30-54			
2+0	109.16	105.02	4.14		0+86.4	0+88.9	#2007	#1440	1022 R sec next pg		5-12-02			
2+80.2	109.26	105.10	4.16	2+80.2	1+10.9	1+13.4	2249		929 Bonn		8-25-45			
96-865-7	1-23-96	1030 S. Everett - N.C.			1+46.8	1+37	#2010				10-13-49			
					1+63.7	1+66.2								
					1+88.7	1+91.2								
					2+14.2	2+16.7	#1644	#3614	916 Everett	933 A Bonn	11-19-29	1-10-51		
					2+42.5	2+42.5								
					0+10	0+10								
					0+37.3	0+37.3	255763		1042 S. Everett		6-10-76			
					0+55.0	0+63.7	C4382	C55864	1042 S. Irving		1-22-74	6-10-76		
					1+11.9	0+89.3	6097	2000-0118	918 Everett	2124 Irving	7-27-82	2-5-85		
					1+12.3	1+14.8	#3	2082	918 Everett	Irving	1-2-30	10-18-49		
					1+40.2	1+40.2								
					1+79.3	1+79.3								
					1+65.9	1+65.9	#1304		2118 Irving		6-16-50			
					1+90.3	1+90.3								
					2+15.5	2+15.5	#1321		2112 Irving		8-14-97	1-20-39		
					2+41.8	2+41.8								
					2+70.6	2+68.1	#3615		939 S. Bonn		8-10-88	1-10-51		
					2+93.3	2+93.3	#2081		2106 Irving		10-18-49			
					3+18.4	3+18.4								
					3+43.8	3+43.8	#2080		2102 Irving		10-18-49			
					0+59.9	0+62.4	#1753		922 S. St. Clair		12-23-29			
					0+85.7	0+88.2	#293				7-25-36			
					1+11.5	1+14	#23	#198	1028 S. St. Clair	919 S. Everett	2-3-54	3-15-30		
					1+37.2	1+39.7								
					1+63.3	1+65.8	#2504	#1667	1036 S. St. Clair	939 S. Everett	9-26-50	11-25-29		
					1+88.8	1+91.3								
					2+14.4	2+16.9								
					2+40.3	2+42.8								
					0+22.2	0+22.2								
					0+48.2	0+48.2	C49309	#1332	1055 Everett		4-30-75	1-27-46		
					0+70.9	0+73.4	#891		9371041 Everett		10-8-47			
					0+99	0+99			2212 Irving		11-19-51			
					1+24.6	1+24.6			2218 Irving		3-1-50			
					1+51.4	1+51.4	#3488							
					1+77.5	1+77.5								
					2+06.5	2+04								
					2+26.7	2+25.7	23837	#5121	1042 B St. Clair	2224 Irving	9-6-89	7-2-51		
					2+51.9	2+51.9	#5253		1050 S. St. Clair		7-17-51			

10058427-1011 Everett - Al Henning - 10-2-76 (5140) Tap #2812 - 936 S. St. Clair - 10-28-40 - Simmons Pibg. Co.
 Tap #2109 - 1018 Everett - 6-20-45 - Geo. Sargent. Tap #392 - 2201 McCormick - 7-12-46 - Riggs. check above
 Tap #2298 - 2118 Irving - Riggs Pibg. - 10-19-54 Tap #1540 - 1018 S. St. Clair - 1-21-48 - J.E. Lansdowne.
 Tap #378 - 2121 McCormick - 7-9-48 - Baker Pibg. Co. Tap #290 - 1036 S. St. Clair - 5-5-54 Phipps Pibg. (trailer)
 Tap #5420 - 2121 McCormick - 6-30-51 Creekmore Pibg. Tap #2218 - 1036 S. St. Clair - Trailer - 9-6-56 Al Henning - 1-3-74
 Tap #2387 - 916/89 - 1042 S. St. Clair - Repair - Haney - #2359 1034-36 S. St. Clair - N/C - Bob Scott - (4" SDR 35 - 1+88.7 tap)