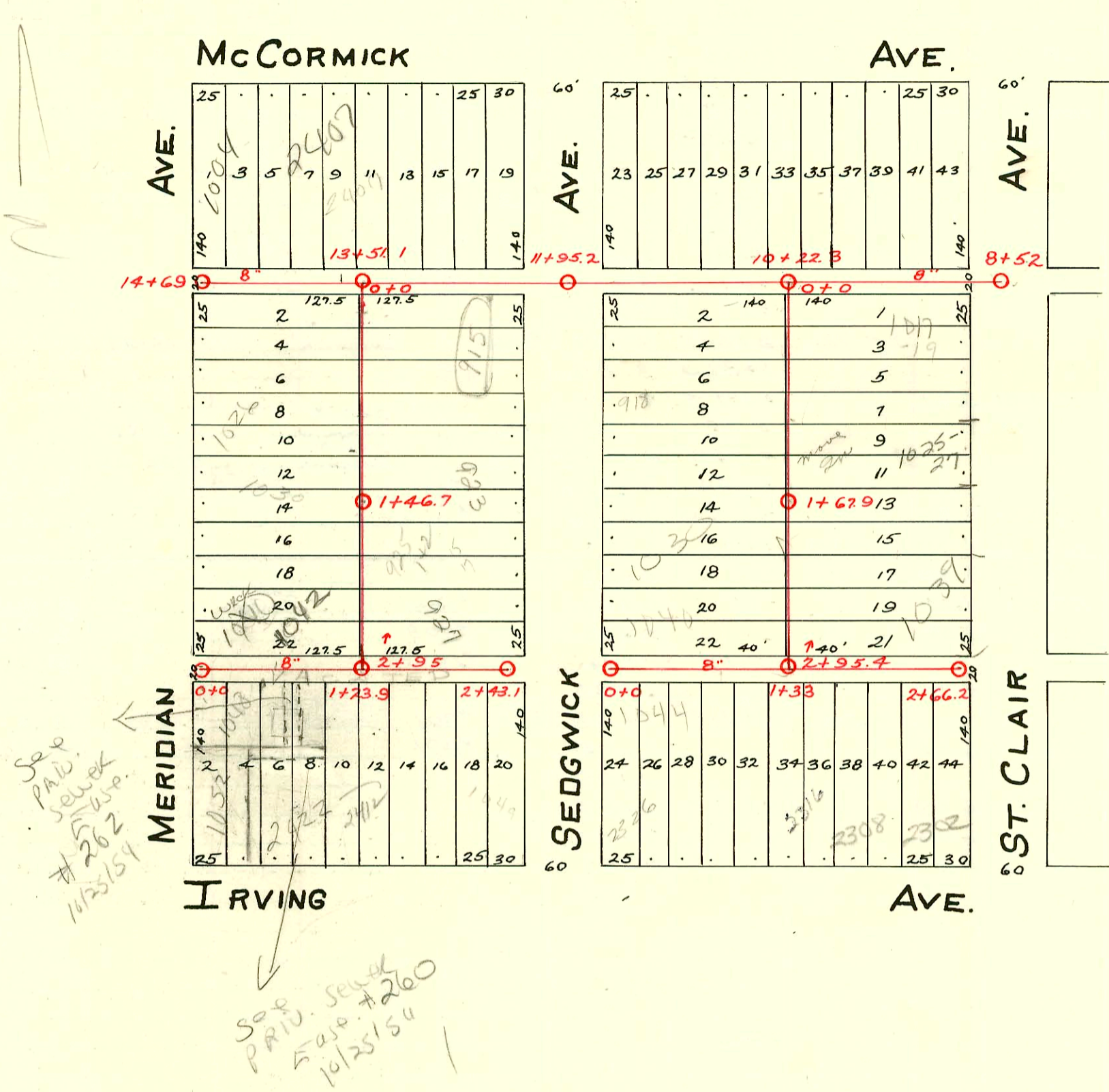


L.A.T. 13 - DIST. A - S.S. No. 21



Sewer 2001-21912 8/26/1 1042 S Meridian - Mies: 4" SCH 40 - 4" WFE 56.6' E of MH, IRVING CO,
 1H45, 1H46, 1H22, 1V22
 #92-30143-7 (9/21/92) 2308 W Irving - This conn shows orig. address of 2304 Irving. No listing under 2308.
 Wye 74 1/2' W. of M.H.; 1-4" C.O.; 4" SDR 35; gasket into wye; (w-1+91.6)
 #92-30144-7 (9/21/92) 2302 W. Irving - Repair - wye 20' W. of M.H. (2+46.2) 1-4" C.O. 4" SDR 35 gasket into wye

CONSTRUCTION RECORD

SERVICE RECORD

STATION	ELEVATION		Depth	MANHOLE	4-INCH "Y" BRANCHES		No. of Permit		House Number		DATE OF PERMITS	
	Ground	Grade			North West	South East	North West	South East	North West	South East	North West	South East
8+52				8+52	8+91		#768		2303 McCormick		6-26-29	
9+0	108.81	104.85	3.96		9+13.7	9+16.2	#4073		1011 S. St. Clair		9-5-73	
				Tap	9+41.8		#766		2305 McCormick		6-26-29	
					9+71.8		#1105		1019 S. St. Clair		9-6-73	
					9+67.3		#653		2311 R. McCormick		8-26-47	
10+0	109.27	104.95	4.32	10+22.3	10+19		#571		2317 McCormick		8-5-48	
					10+44.3							
					10+69.6							
11+0	109.19	105.05	4.14		10+93.3	10+95.8	#2026		2323 McCormick		4-9-48	
					11+21.2							
					11+95.2							
12+0	110.52	105.15	5.37		12+39		#1345		901 S. Sedgwick		9-20-29	
					12+64.6	12+67.1						
					12+91							
13+0	109.95	105.25	4.70		13+16.3		#799		2407 McCormick		7-2-29	
					13+51.1		#5201		2423 McCormick		6-14-55	
					13+41.8							
					13+67							
14+0	109.62	105.35	4.27		13+92.6	13+95.1	#5468		2425 McCormick		6-4-53	
					14+18.8							
14+69	109.45	105.42	4.03	14+69	14+47							
Line in N. & S. Alley W. of St. Clair	0+0	109.31	105.00	4.31	0+0	0+26.8	8105		918 S. Sedgwick		9-5-73	
						0+52.9	#1662				5-9-83	
						0+78.2						
						0+46.2						
						0+67.0						
						0+55.4						
						0+80.7						
						1+04.1	#4517		1025 S. St. Clair		12-7-73	
						1+30.1	#342		922 S. Sedgwick		5-3-51	
						1+67.9	#342		1031 S. St. Clair		9-20-29	
						1+57.6	#3548		924 S. Sedgwick		12-17-52	
						1+83.6	#1098		1039 S. St. Clair		5-18-50	
						1+88.9	#1007				9-27-48	
						2+08.9						
						2+11.4						
						2+35						
						2+37.5						
						2+60.9						
						2+63.4						
Line in E. & W. Alley No. of Irving.	0+0	109.28	105.45		0+0	0+21	#3457		1040 S. Sedgwick	1044 S. Sedgwick	2-25-50	6-5-51
						0+70.3	#5633		2322 Irving			8-20-51
						0+72.8						
						0+97.3	#3147		2316 S. Irving			11-10-52
						1+22	#1224		2304 Irving			6-25-56
						1+42	#1186		2302 Irving			7-21-72
						1+68.1	#853		1018 S. Meridian	1045 S. Sedgwick	12-18-51	11-4-29
						1+93.4	#1224		1021 S. Sedgwick			9-9-29
						2+20	#43		1026 S. Meridian	923 S. Sedgwick	4-21-50	5-5-30
						2+45	#1613		1030 S. Meridian		7-14-50	
						2+45	#47		936 S. Meridian		3-23-32	1-31-84
						2+45	#876		927 S. Repl. entire line		6-7-00	9-18-30
Line in N. & S. Alley W. of Sedgwick	0+0	109.93	105.33	4.60	0+0	0+27.5	#6853		1018 S. Meridian	1015 S. Sedgwick	12-18-51	11-4-29
						0+53	#1238		1021 S. Sedgwick			9-9-29
						0+78.8	#458		1026 S. Meridian	923 S. Sedgwick	4-21-50	5-5-30
						1+04.7	#1613		1030 S. Meridian		7-14-50	
						1+29.7	#47		936 S. Meridian		3-23-32	1-31-84
						1+46.7	#876		927 S. Repl. entire line		6-7-00	9-18-30
						1+81.9						
						1+84.4						
						2+07.7						
						2+10.2						
						2+32						
						2+34.5						
						2+58.3						
						2+60.8						
Line in E. & W. Alley N. of Irving.	0+0	109.16	105.76	3.40	0+0	0+31.3	#2603		940 S. Meridian	942 S. Meridian	1-22-46	5-15-44
						0+56.5	#1541		2422 Irving			1-3-55
						0+84.5	#3078		2412 Irving			7-25-45
						1+10.6	#2170		949 S. Sedgwick			9-26-83
						1+35.9						
						1+61.5	#936					
						1+87.3						
						1+84.8						
						2+10.8						
						2+37.1						
						2+43.1						
						2+43.1						

7490 - 1052 S. Meridian - Al Manning - 2-18-83 (70110' E of 0100)

223263 - 2407 McCormick - 3-5-71 - J.C. Jensen - Tap (14+00.1)

#1212 - Tap - 911 S. St. Clair - 10-14-48 - Chas. W. Burgan.

#6014 - Tap - 927 S. Sedgwick - 10-2-51 - Shepherd Plbg. Co.

#6853 - Tap - 1018 S. Meridian - 12-18-51 - Headgapath Plbg. Co.

#6074 - Tap - 918 1/2 S. Sedgwick - 8-22-55 - Bowers Plbg. Co.

#455 - Tap - 9048 S. Meridian - 4-9-56 - Bowers Plbg. Co. - (495' of MH)

#6484 - Tap - 1019 S. St. Clair - 11-19-51 - Joe McDonald

#545 - Tap - 2326 Irving - 3-25-52 - Jack Durham.

Rec. #48304 - Tap - 2414 McCormick - Thompson Plbg. - 1-25-57

#14624 - Tap - 908 S. Sedgwick - Al Manning - 8-31-61 (11+03.3)

#21305 - 8/15/88 - 1085-27 S. St. Clair - NK - (wye H32.6)