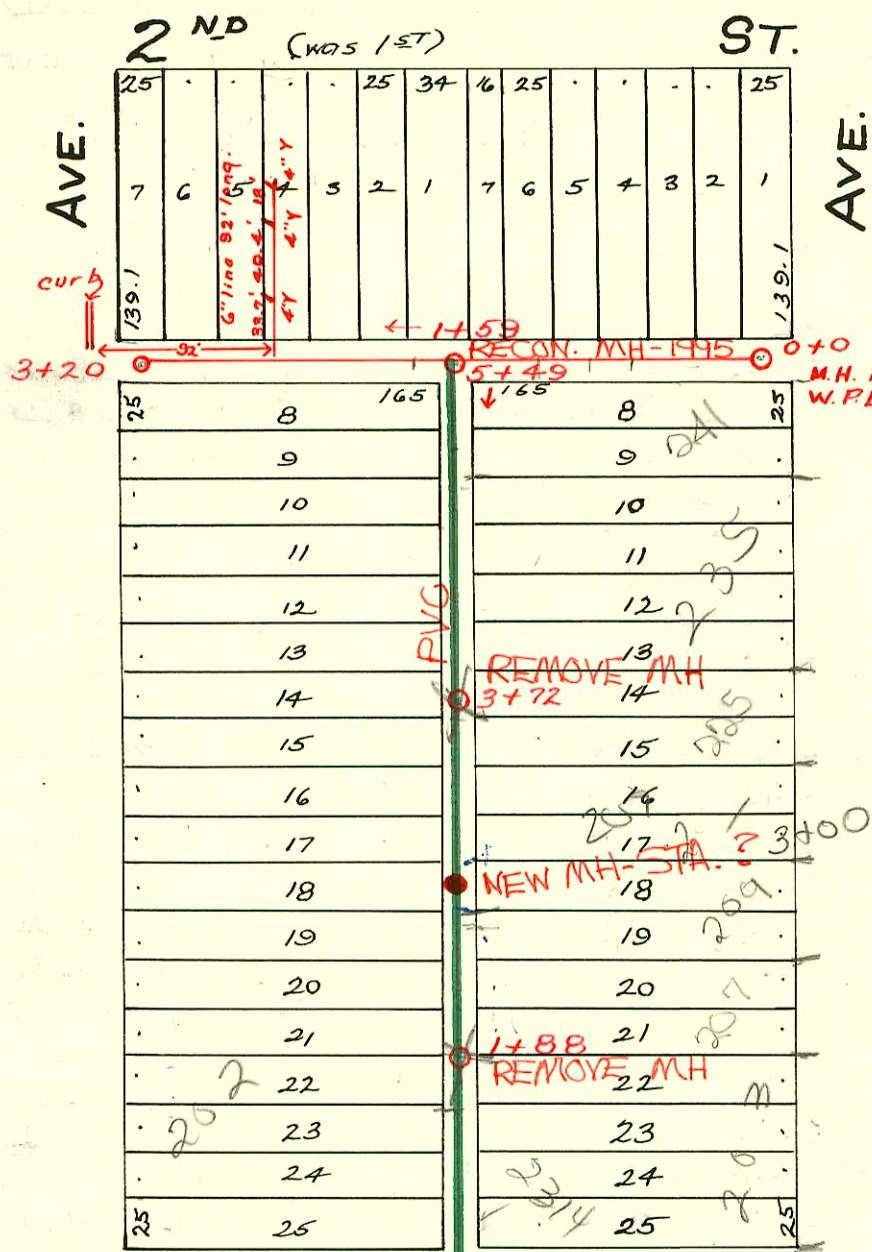


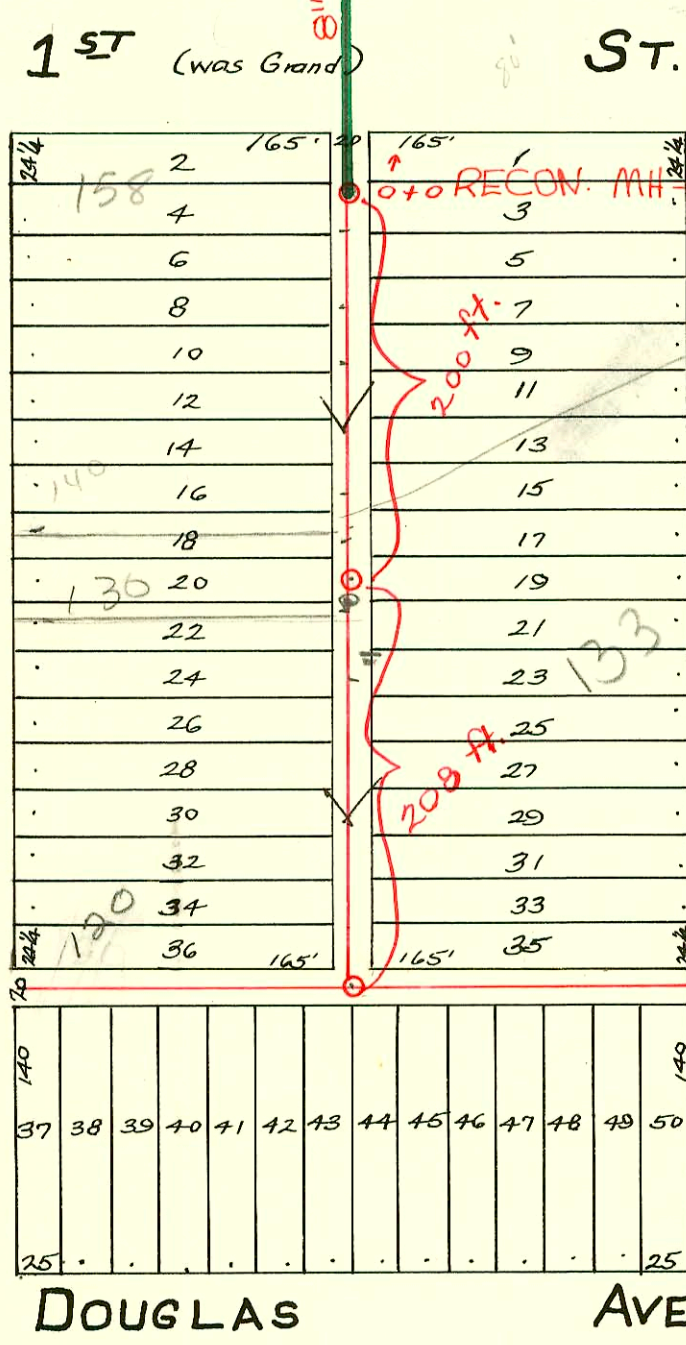
LAT. F - S.S. No. 13
1923

1995 SANITARY SEWER RECONSTRUCTION PROGRAM - PHASE II
PROJ. NO. N/A (621060)
BUILT BY W.B. CARTER CONST. CO.
BOOKED 2-20-96 FROM AS BUILT



RECONNECTIONS

STA.	ADDRESS	DIRECTION
4+30	232 N. Sedgwick	West
4+84	235 N. St. Clair	East
5+34.5	241 N. St. Clair	East
4+61	242 N. Sedgwick	West
4+07	236 N. Sedgwick	West
3+63	225 N. Sedgwick	West
3+60	220 N. Sedgwick	West
3+12	218 N. Sedgwick	West
2+80	209 N. St. Clair	East
2+61	214 N. Sedgwick	West
2+21	207 N. St. Clair	East
2+10	210 N. Sedgwick	West
1+83	202 W. Sedgwick	West
1+55	203 N. St. Clair	East
0+94	200 N. Sedgwick	West



rehab line is PVC

No record of wye's in this block. M.H. meas. by F. Madson 2-3-29

- 2005-03269 - 12/29/05 - 225 N St Clair - Reddi Ind - 4" PVC (1) twinco 12/29/05
- 2000-01006 - 4/25/00 - 225 N St Clair - Reddi Rootr - 4" SCH40 - 1TWINCO
- 2002-01139 - 4/22/02 - 130 N Sedgwick - Reddi Rootr - 4" SCH40 - 2TWIN CO - 2 KICKOUTS

SwR 2003-01994 7/30/03 133 N St Clair - Mtes Const - SDR stub 43' S of MH
5347-337, 2 Fernco, 3H22, 1trap, 1H45, 2TWINCO, shallow, 4" 40 PVC

CONSTRUCTION RECORD

SERVICE RECORD

In N. & S. Alley N. of 1st Ave.

E. & W. Alley S. of 2nd

STATION	ELEVATION		Depth	MANHOLE	4-INCH "Y" BRANCHES		No. of Permit		House Number		DATE OF PERMITS			
	Ground	Grade			North West	South East	North West	South East	North West	South East	North West	South East	North West	South East
0+0	113.81	109.41	4.40	0+0	1+08	1+05.5	#740	#663			4-8-24	4-2-24		
1+0	113.86	109.51	4.35		1+33.5	1+31								
					1+58.5	1+56	#616	#1470		2057 St. Clair	3-31-24	10-5-23		
					1+83.5	1+81								
2+0	114.53	109.61	4.92		2+10	2+07.5	#764	#865			4-10-24	4-17-24		
				1+88	2+35	2+22.3	#899	#1520		2071 N St. Clair	4-22-24	10-16-23		
					2+59.9	2+57.4								
					2+86	2+80.5				2091 N St. Clair		10-15-23		
3+0	115.77	109.71	6.06		3+11.5	3+09	#1514	#392		2071 N St. Clair		3-5-24		
					3+37.5	3+35								
				3+72	3+61.5	3+59	#590		220 N. Sedgwick		7-13-27			
					3+87.5	3+85								
4+0	115.42	109.81	5.61		4+12.5	4+10								
					4+38	4+35.5	#142		240 N. Sedgwick		3-2-25			
					4+63	4+60.5	#942		236 N. Sedgwick		8-25-25			
					4+89	4+86.5		#131		235 N St. Clair		2-7-24		
5+0	114.72	109.91	4.81		5+13.9	5+11.4		#1004				5-2-24		
5+49	114.25	109.96	4.29	5+49	5+35.5	5+33								
0+0	113.62	110.13	3.49	0+0		0+39				245 N. St. Clair		9-9-24		
0+59	113.35	110.06	3.29			0+63		#2051				4-7-24		
1+09	113.55	110.01	3.54			0+88		#708				9-20-23		
						1+16		#1390						
1+59	114.25	109.96	4.29			1+39								
				1+59	Rehab 4" sch 40 1+65	1+79	2002- 01139	#391	110 N R 500 Sedgwick next		4-22-02	3-5-24		
2+09	116.45	110.01	6.44			2+04		#891				4-18-24		
						2+29								
2+59	116.15	110.06	6.09			2+54								
3+09	116.20	110.11	6.09			2+80								
3+20	116.00	110.13	5.87	3+20		3+05								

235 N ST. CLAIR - 1-24-96
New Conn point rec'd from
W.B. Carter after line Rehab is 4784.0

C68351-158 N Sedgwick - Jack Brannon - 9-14-78 - Repair (23' S of 0+0)
#57836-2309 W. 2nd - Quatara (S) (Stop) - 9-24-76

#659 - 124 N Sedgwick - 12-29-37
Tap - #139 - 258 N Sedgwick - 3-9-29 - R.H. Anderson.
Tap - #374 - 244 N Sedgwick - 4-15-29 - Sargent.
Private line - Trailer - #1269 - 232 N Sedgwick - 5-15-52 - Jack Durham.
#1270 - Setting wye - 5-15-52 - Jack Durham - 232 N Sedgwick.