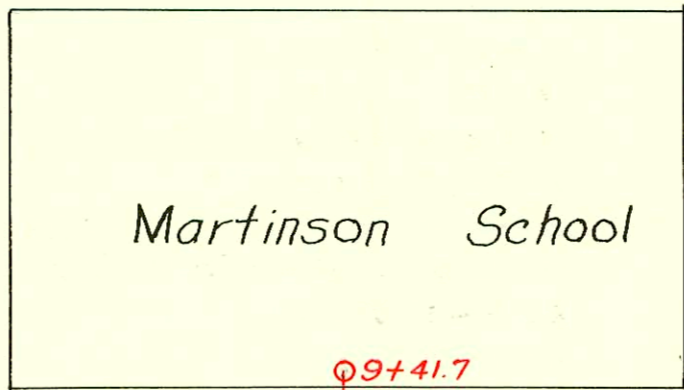


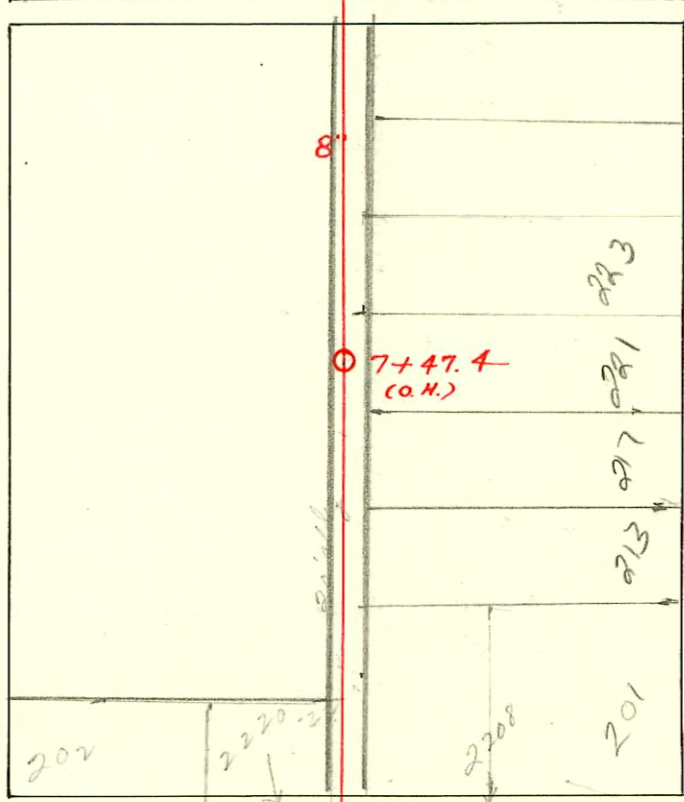
LAT. A-S.S. No. 13 - 1916  
S.S. No. 13 - 1909

SECOND (was 1st St.) ST.



AVE.

AVE.

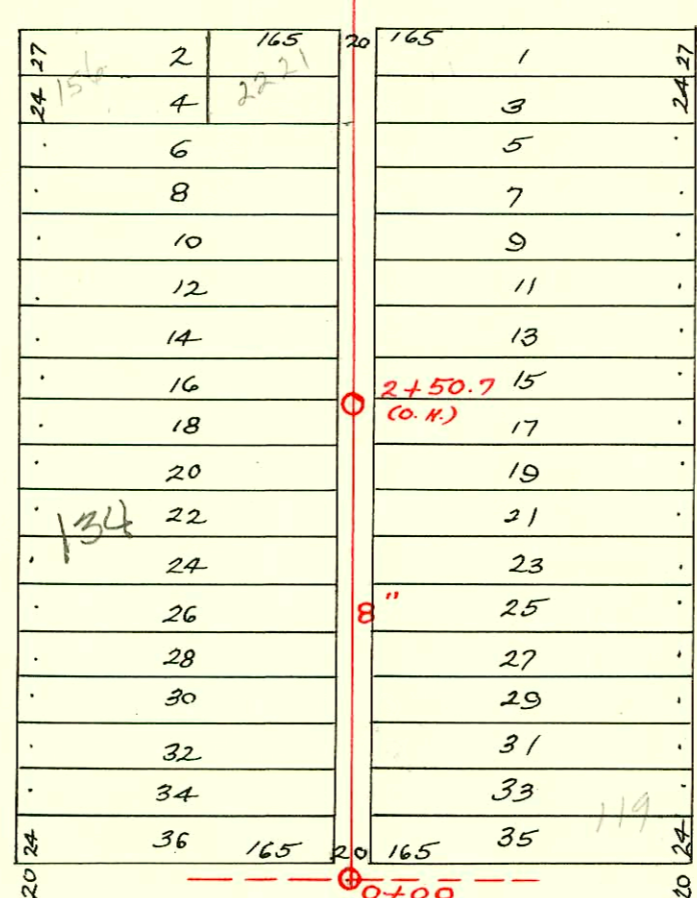


TRAP AREA

80 FIRST (was Grand Ave.) ST. 80

ST. CLAIR

ATHENIAN



DOUGLAS AVE.

CONSTRUCTION RECORD						SERVICE RECORD						
STATION	ELEVATION		Depth	MANHOLE	4-INCH "Y" BRANCHES		No. of Permit		House Number		DATE OF PERMITS	
	Ground	Grade			North West	South East	North West	South East	North West	South East	North West	South East
	113.5	109.22	4.28	9+41.7 - Flush tank								
					9+35.2	9+32.7	#1	#832	229 N. Athenian		1.2.17	8.7.28
					9+25.4	9+22.9						
9	113.3	109.18	4.12		9+05	9+02.5		#1052				8.21.22
					8+79.7	8+77.2	#875	#			4.18.24	
					8+54.9	8+52.4	#2622	#826	239 N. St. Clair		11.28.24	7.13.22
					8+29.7	8+26.2						
8	113.3	109.08	4.22		8+04.2	8+01.7						
					7+80.2	7+77.7	#192				2.7.23	
					7+56	7+53.5	#481		222 N. St. Clair		5.6.25	
					7+30.7	7+28.2						
7	113.3	108.98	4.32		7+05.5	7+03	#1269	#75			9.29.22	2.15.21
					6+80.2	6+77.7		#496	211 N. Athenian			9.28.37
					6+54.7	6+52.2	#1482	#51			11.6.22	2.9.21
					6+29.8	6+27.3						
6	113.7	108.88	4.82		6+04.6	6+02.1	#275				10.2.22	
					5+79.3	5+76.8		#3668	201 N. Athenian			6.9.41
					5+54.2	5+51.7	#233		2220-22 W. 1st		10.4.40	
					5+29.1	5+26.6		#217				4.19.17
5	112.8	108.78	4.02									
				4+98.5								
4	113.6	108.68	4.92		4+22.7	4+20.2	#251	#			1.5.99	
					3+97.5	3+95	#859	#272	156 N. St. Clair		6.5.23	4.9.21
					3+72.3	3+70.1	#858	#764	154 N. St. Clair		6.5.23	10.11.20
					3+44.5	3+42	#728				5.14.23	
3	114.0	108.58	5.42		3+19	3+16.5		#763				10.11.20
					2+94.2	2+91.7	#381				3.16.23	
					2+68.7	2+66.2		#715				4.7.24
					2+41.3	2+38.8	#374				3.14.23	
2	112.5	108.48	4.02		2+12.8	2+10.3	#842				6.2.23	
					1+90.3	1+87.8						
					1+65	1+62.5	#1006	#443 1/2	134 N. St. Clair		11.12.02	7.10.23
					1+39.8	1+37.3		#611				8.2.20
1	112.6	108.38	4.22		1+14.5	1+12						
					0+89.5	0+87	#879				4.18.24	
					0+64	0+61.5						
					0+39	0+36.5						
0	114.00	108.28	5.72	0+00	0+14	0+11.5						

2002-02881-202 N St Clair - 161/162-Reddi Rootr. 4" PVC 40- 4" CO @house

99-37167 3-17-97 223 N. Athenian - Approach -

#1212 - Top - 213 N. Athenian - top at 6+57.2 - 11.21.38  
 #481 - Private line - 124 N. St. Clair - 5-2-29  
 #2732 - Top - 202 N. St. Clair - 10-4-40 - Frederick Pibq.  
 #3692 - Top - 2221 W. 1st - 6-19-97 - J.C. Hendricks Top at 3+92, AE Henning - 4" SCH 40 - old wye 101' of MH 4+98.5 (3+97.5)  
 #3749 - Top at 5+71.5 - 2208 W. 1st - 6-27-41 - Tess Hanna. Trap installed, Fernco, 6x4 Fernco, 17W100