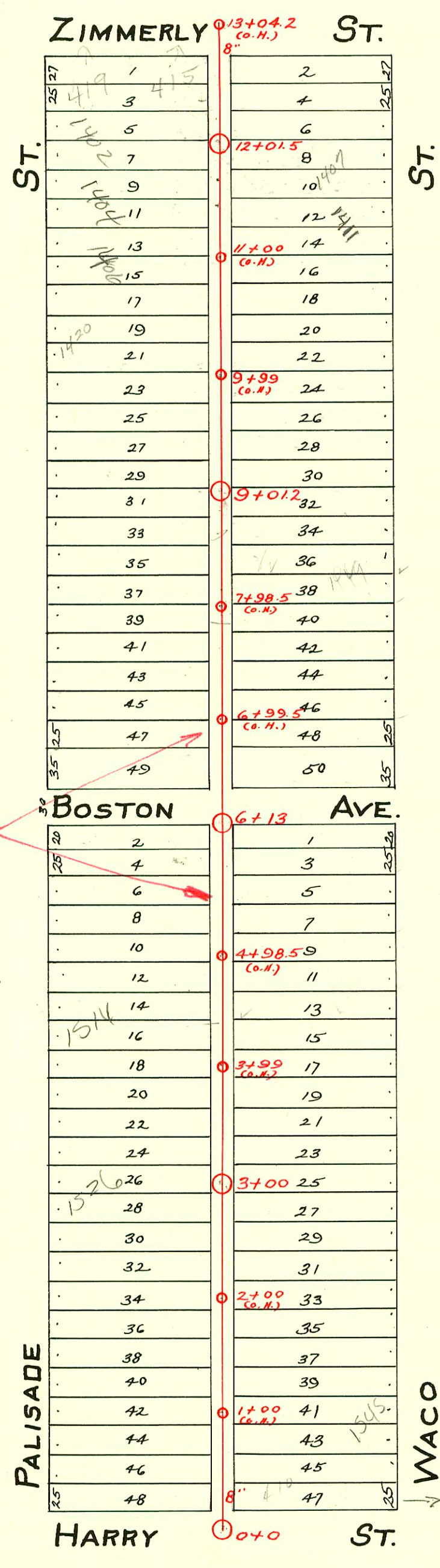


S.S. No. 18-1910
DIST. Y- S.S. No. 20-1920

Trap Area



→ and 35' of Lot 49

| CONSTRUCTION RECORD | | | | | | SERVICE RECORD | | | | | | |
|---------------------|-----------|--------|-------|---------------|---------------------|----------------|---------------|------------|-----------------|-----------------|-----------------|-------------------|
| STATION | ELEVATION | | Depth | MANHOLE | 4-INCH "Y" BRANCHES | | No. of Permit | | House Number | | DATE OF PERMITS | |
| | Ground | Grade | | | North West | South East | North West | South East | North West | South East | North West | South East |
| 13 | 107.46 | 101.80 | 5.66 | 13+04.2(O.H.) | 12+68.5 | 12+66 | #750 | | 419 W. Zimmerly | | 5-11-56 | |
| | | | | | 12+38.5 | 12+36 | #445 | #4753 | 415 W. Zimmerly | 405 W. Zimmerly | 5-5-22 | 4-7-53 |
| | | | | | 12+21.5 | 12+19 | #1261 | #446 | 1402 Palisade | | 8-25-23 | 10-19-16 |
| 12 | 107.66 | 101.60 | 6.06 | 12+01.5 | 11+97 | 11+94.5 | | #01206 | | 1407 S. Waco | | 9-12-20 |
| | | | | | 11+69.5 | 11+67 | | | | | | |
| | | | | | 11+46 | 11+43.5 | #1215 | #774 | 1406 Palisade | 1411 S. Waco | 8-12-23 | 4-9-81 3-15-19 |
| | | | | | 11+21 | 11+18.5 | | | | | | |
| 11 | 107.46 | 101.40 | 6.06 | | 10+95.5 | 10+93 | #1349 | | | | 9-12-23 | |
| | | | | | 10+70 | 10+67.5 | | | | | | |
| | | | | | 10+44.5 | 10+42 | | #388 | | 1420 S. Waco | | 5-18-20 |
| 10 | 106.96 | 101.20 | 5.76 | | 10+21.5 | 10+19 | 67414 | #152 | Palisade | | 7-18-78 | 3-15-11 |
| | | | | | 9+94.5 | 9+92 | | | | | | |
| | | | | | 9+89.5 | 9+87 | | | | | | |
| | | | | | 9+43.5 | 9+41 | | | | | | |
| | | | | | 9+18 | 9+15.5 | | #568 | | | | 11-18-15 |
| 9 | 106.96 | 101.00 | 5.96 | 9+01.2 | 8+93 | 8+90.5 | #2017 | #918 | 1428 Palisade | | 9-5-24 | 9-30-21 |
| | | | | | 8+67.5 | 8+65 | | #642 | | | | 8-19-20 |
| | | | | | 8+43 | 8+40.5 | #1740 | #80 | | | 11-25-23 | 2-8-22 |
| 8 | 106.33 | 100.80 | 5.53 | | 8+17 | 8+14.5 | | | | | | |
| | | | | | 7+92 | 7+89.5 | | #81 | | | | 2-8-22 |
| | | | | | 7+66.5 | 7+64 | #1871 | #446 | 1450 Palisade | | 8-15-24 | 7-27-10 |
| | | | | | 7+40.5 | 7+38 | #1787 | #447 | | | 9-23-49 | 7-27-10 |
| 7 | 106.53 | 100.60 | 5.93 | | 7+15 | 7+12.5 | | | | | | |
| | | | | | 6+88.5 | 6+86 | #235 | | 1460 Palisade | | 5-2-31 | 11-19-25 |
| | | | | | 6+59.5 | 6+57 | #1110 | | | 1408 Waco L.D. | | 11-12-21 |
| 6 | 106.33 | 100.40 | 5.93 | 6+13 | 5+97.5 | 5+95 | #948 | | | | 6-26-23 | |
| | | | | | 5+85.5 | 5+83 | | #1200 | | | | 9-3-19 |
| | | | | | 5+62.5 | 5+60 | | | | | | |
| | | | | | 5+40 | 5+37.5 | #78 | | 1507 Palisade | | 2-13-24 | |
| 5 | 106.13 | 100.20 | 5.93 | | 5+14 | 5+11.5 | #705 | #355 | Palisade | | 8-22-27 | 4-20-11 |
| | | | | | 4+89 | 4+86.5 | | #1286 | | | | 10-14-19 |
| | | | | | 4+66 | 4+63.5 | | | | | | |
| | | | | | 4+40 | 4+37.5 | #179 | #50 | 1514 Palisade | | 2-13-24 | 3-6-16 |
| 4 | 105.73 | 100.00 | 5.73 | | 4+14.5 | 4+12 | | | | | | |
| | | | | | 3+89.5 | 3+87 | | | | | | |
| | | | | | 3+64 | 3+61.5 | | | | | | |
| | | | | | 3+38.5 | 3+36 | #1898 | #129 | | | 12-24-23 | 3-27-18 |
| | | | | | 3+12.5 | 3+10 | #852 | | 1520 Palisade | | 10-5-26 | |
| 3 | 105.73 | 99.80 | 5.93 | 3+00 | 2+87.5 | 2+85 | #4 | #1039 | ? | | 1-7-24 | 9-1-19 |
| | | | | | 2+62 | 2+59.5 | | | | | | |
| | | | | | 2+36.5 | 2+34 | | #292 | | 1537 S. Waco | | 12-4-35 |
| | | | | | 2+10.5 | 2+08 | #1066 | | 1538 Palisade | | 12-9-46 | |
| 2 | 105.73 | 99.60 | 6.13 | | 1+82.5 | 1+80 | #870 | #1290 | 1542 Palisade | 1541 S. Waco | 10-31-46 | 3-24-42 |
| | | | | | 1+59.5 | 1+57 | #674 | | 1546 Palisade | | 8-5-26 | |
| | | | | | 1+34 | 1+21 | | | | | | |
| | | | | | 1+09 | 1+06.5 | | #514 | | ? | | 9-12-10 |
| 1 | 105.63 | 99.40 | 6.23 | | 0+83.5 | 0+81 | #6551 #837 | | 1544 S. Waco | | 9-14-21 | |
| | | | | | 0+58 | 0+55.5 | #772 | #413 | | 410 W. Harry | | 12-9-57 |
| | | | | | 0+32 | 0+29.5 | | | | | 8-25-21 | 7-13-10 |
| 0 | 105.23 | 99.20 | 6.03 | 0+00 | | | | | | | | |

62284-1428 Palisade 7-27-77 AR Henning (9+60.7)
 #1533- Trailer - 1544 Palisade - 7-20-54 - H.H. Cree Kriore - Private line conn.
 #2988 - Top - 1449 S. Waco - 4-29-46 - Burqan Pibq.
 #1600 - Top - 1446 Palisade - 3-17-47 - Burqan Pibq.
 #14128 - Top - 1449 S. Waco - A.E. Leveson - 4-28-61 (8+10.2)
 #14129 - private line connection 1449 1/2 S. Waco - A.E. Leveson - 4-28-61
 #16916 - Top - 1445 S. Waco - A.E. Leveson - 4-5-63 - Top (8+34.2)
 #2100 - 12-15-80 1404 Palisade - W.K. - 32' sag MH
 #2099 - 12-15-80 1404 Palisade - 57' sag MH