

SCALE 1"=150'

SEE N-205  
For New 8" Sewer

Note:  
See Bk. H, P. 123  
for relocation.

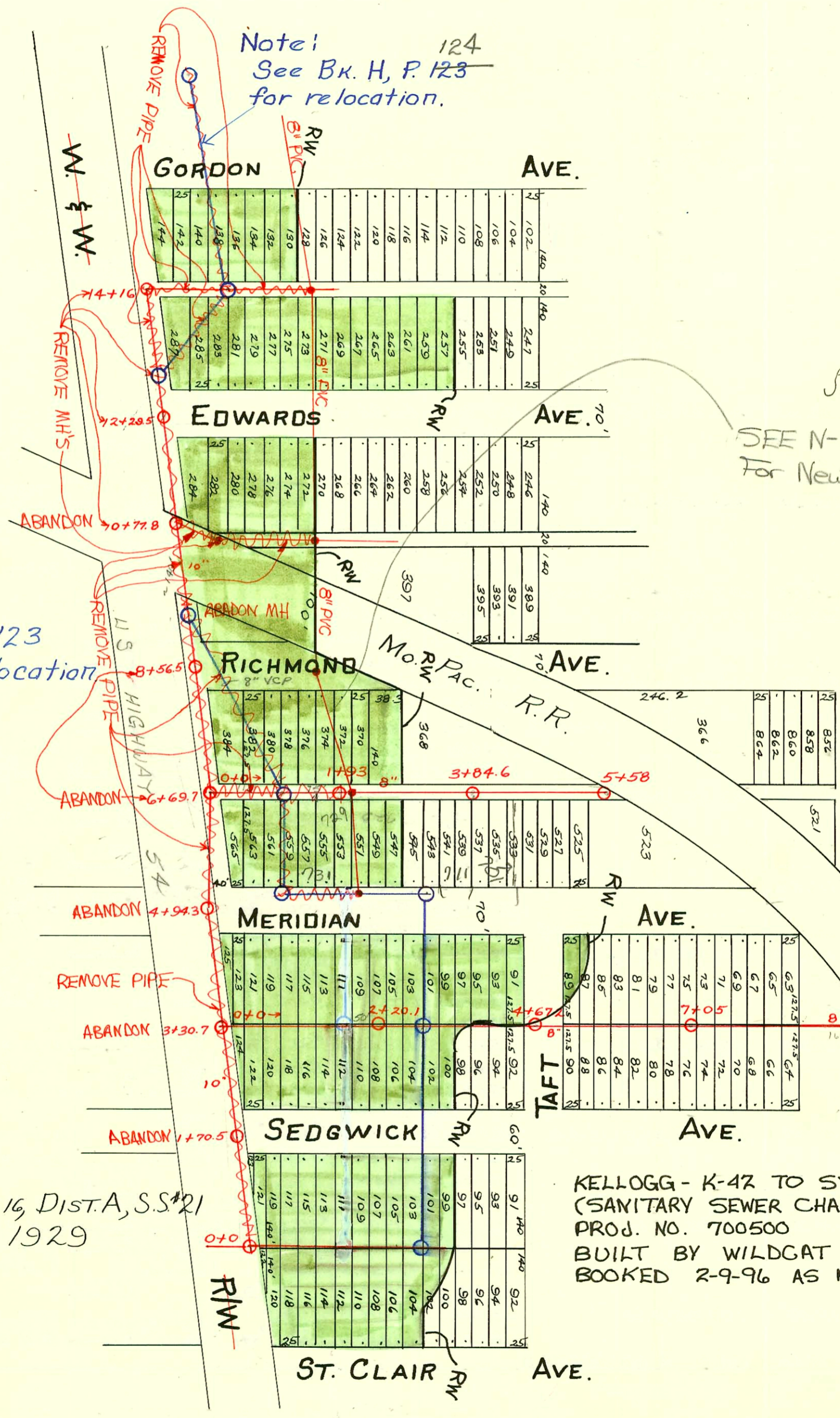
See Bk. H, P. 123  
for sewer relocation

See P. 202  
For line North

Part of LAT 16, DIST. A, S.S. #21  
Carter - 1929

KELLOGG - K-42 TO SYCAMORE  
(SANITARY SEWER CHANGES)  
PROJ. NO. 700500  
BUILT BY WILDGAT CONST. CO.  
BOOKED 2-9-96 AS PER PLAN

2001-02661 10/23/01 711 S Meridian - A Good Pibr - 4" sch 40 Replaced all but lower 1' at main - 17W/100@house, 11/22



### CONSTRUCTION RECORD

### SERVICE RECORD

10" Line along R.R. R/W.

8" Line Bet. Meridian & Sedgwick From R/W No. to N.L. University.

Line Bet. Meridian & Richmond From R/W North.

STATION	ELEVATION		Depth	MANHOLE	4-INCH "Y" BRANCHES		No. of Permit		House Number		DATE OF PERMITS	
	Ground	Grade			North West	South East	North West	South East	North West	South East	North West	South East
0+0	108.60	104.90	3.70	0+0								
1+0	108.65	105.00	3.65	1+70.5								
2+0	110.00	105.10	5.10									
3+0	109.67	105.20	4.47	3+30.7								
4+0	109.72	105.30	4.42									
5+0	112.57	105.40	7.17	4+94.3								
6+0	110.28	105.50	5.22									
7+0	112.87	105.60	7.27	6+69.7								
8+0	110.35	105.70	4.65	8+56.5								
9+0	110.25	105.80	4.45									
10+0	110.25	105.90	4.15	10+77.8								
11+0	110.30	106.0	4.30									
12+0	110.30	106.10	4.20	12+29.5								
13+0	111.28	106.20	5.08									
14+0	112.38	106.30	6.08									
14+16	112.65	106.32	6.33	14+16								
0+0	109.70	105.30	4.4	0+0	0+35.5	0+33						
					0+61.3	0+58.8						
					0+85.5	0+83.0						
1+0	110.30	105.40	4.90	1+12	1+12	1+09.5						
					1+37.2	1+34.7						
					1+62.5	1+60						
					1+86.2	1+83.7						
2+0	110.70	105.50	5.20	2+12	2+12	2+09.5						
				2+20.1	2+20.1	2+38.0						
					2+65.5	2+63.0						
					2+88	2+85.5						
3+0	110.45	105.60	4.55	3+14.2	3+14.2	3+11.7						
				3+39.5	3+39.5	3+37.0						
				3+63.0	3+63.0	3+60.5						
				3+88.5	3+88.5	3+86						
4+0	111.07	105.70	5.37	4+14.5	4+14.5	4+12						
				4+39.5	4+39.5	4+37						
				4+67.2	4+67.2							
5+0	110.70	105.80	4.90	5+03.9	5+03.9	5+01.4						
				5+29.5	5+29.5	5+27.0						
				5+55	5+55	5+52.5						
				5+81.1	5+81.1	5+78.6						
6+0	110.60	105.90	4.70	6+06.5	6+06.5	6+04						
				6+32.0	6+32.0	6+29.5						
				6+57.5	6+57.5	6+55						
				6+82.5	6+82.5	6+80						
7+0	110.50	106.00	4.50	7+14.5	7+14.5	7+12						
				7+41.0	7+41.0	7+38.5						
				7+68.0	7+68.0	7+65.5	7384		2401 392		1-18-53	
				7+92.5	7+92.5	7+90.0	5710		2415-3401 R		4-23-52	
8+0	110.50	106.10	4.40	8+16.0	8+16.0	8+13.5			University		9-26-57	
				8+41.5	8+41.5	8+39	5391		2415-3401		9-26-57	
9+0	111.40	106.20	5.20	9+46	9+46				University			
9+52.2	111.10	106.25	4.85	9+52.2	9+52.2			55957	2320		6-16-76	
0+0	112.50	105.70	6.8	0+0	0+34.3	0+31.8						
					0+59.8	0+57.3		#689		762 Meridian		7-9-30
					0+85.5	0+83.0						
1+0	110.09	105.80	4.29	1+12	1+12	1+09.5						
					1+37.3	1+34.8						
					1+63.5	1+61.0						
					1+89	1+86.5						
2+0	110.60	105.90	4.70	2+14.9	2+14.9	2+12.4						
				2+40.5	2+40.5	2+38.0						
				2+66.1	2+66.1	2+63.6						
				2+91.5	2+91.5	2+89.0						
3+0	110.95	106.00	4.95	3+15.5	3+15.5	3+13						
				3+42.1	3+42.1	3+39.6						
				3+65.5	3+65.5	3+63.0						
				3+93.5	3+93.5	3+91.0						
4+0	110.94	106.10	4.84	4+19.3	4+19.3	4+16.8						
				4+47.5	4+47.5	4+45						
				4+74.9	4+74.9	4+72.4						
5+0	110.98	106.20	4.78	4+99.5	4+99.5	4+97.0						
5+38.0	111.00	106.26	4.74	5+38	5+38	5+35.0						

#2358 - Top - 416 S. Meridian - 8-30-52 - Frederick Pibq.  
 #5365 - Top - 717 S. Meridian - 5-28-53 - Lee Layton  
 #4984 - Trailer - 1016 S. Richmond - 5-31-55 - Smith Pibq.  
 #2663 - Top - 617 S. Meridian - S & B Pibq. - 10-4-56  
 #5364 - Top - 723 S. Meridian - Ray McCoy - 9-25-57  
 2 Trailers - 607 S. Meridian - #5344 - 5345 - Smith - 9-23-57  
 Jap # 214084 - Kendall Pibq Co. - 2100 University - 5-14-69 (6+11)  
 #26080 9-5-70 729 S. Meridian - Boardman - (32' S of NP2)