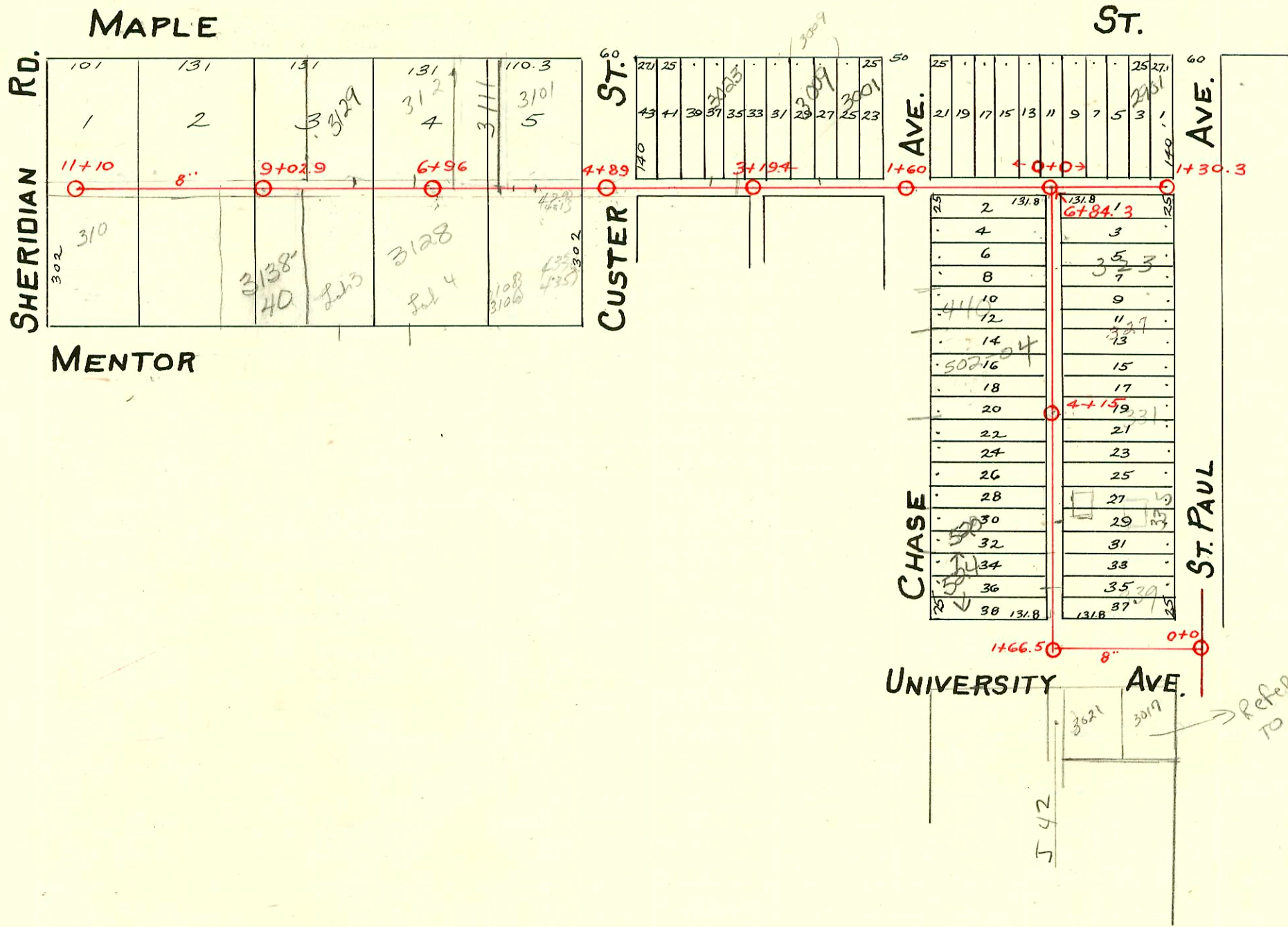


PART OF LAT. 16- DIST. A - S.S. No. 21

Carter - 1929

1=150



2001-00939 - 4/18/61 - 3009w Maple - AE Henning - 4" SCH 40 Tied to u/c w/donut 99' w of MH 1+60 (2+59) ITWINCO, 1422

CONSTRUCTION RECORD

SERVICE RECORD

Line in Alley Bet. St. Paul & Chase.

Line in E & W Alley from St. Paul 1/2 Blk. West.

Line S. of Maple from Sheridan East.

STATION	ELEVATION		Depth	MANHOLE	4-INCH "Y" BRANCHES		No. of Permit		House Number		DATE OF PERMITS	
	Ground	Grade			North West	South East	North West	South East	North West	South East	North West	South East
0+0	112.30	108.40	3.90	0+0								
1+0	112.30	108.50	3.80									
2+0	112.30	108.75	3.55	1+66.5	2+15.3	2+12.8	#2003	#424	524 S.R. Chase	339 S. St. Paul	10-15-03	4-4-56
					2+38.0	2+35.5	2345	02663			9-11-50	
					2+63.5	2+61.0		#107		337 S. St. Paul		
					2+88.5	2+86.0	C15108		538 Chase		7-25-69	
3+0	112.90	108.85	4.05		3+15.5	3+13.0		#959	335 S. St. Paul		5-28-66	10-20-30
					3+50.8	3+48.3						
					3+76.1	3+73.6						
4+0	113.20	108.95	4.15	4+15	4+02.5	4+00	#1841	14373	510 Chase	331 S. St. Paul	7-9-52	6-28-61
					4+27.5	4+25.0						
					4+53.7	4+51.2	C64027		508 S. Chase		11-16-77	
					4+78.5	4+76.0	C46643	#530	505-04 Chase	329 S. St. Paul	9-13-74	10-13-37
5+0	116.01	109.05	6.96		5+00.7	4+98.2						
					5+26.7	5+24.2		#1870	327 S. St. Paul		8-5-50	
					5+51.5	5+49.0	C1883		440 Chase		5-21-79	
					5+77.5	5+75.0						
6+0	117.75	109.15	8.60		6+02.7	6+00.2		C37549		323 S. St. Paul		3-2-73
					6+29.5	6+27.0						
6+84.3	118.50	109.25	9.25	6+84.3	6+54.8	6+52.3						
0+0	118.50	109.38	9.12	0+0	0+05				2911 W. Maple		9-20-29	
					0+32		#1335		290 S. W. Maple		12-11-29	
					0+58		#1728		321 S. St. Paul		11-17-38	
					0+92.5	0+90		#1209	2001 W. Maple		7-14-30	
1+0	115.40	109.45	5.95		1+25.5		#711					
1+30.3	114.70	109.48	5.22	1+30.3								
0+0	118.50	109.35	9.15	0+0	0+26.5		#1266		2915 W. Maple		9-11-29	
					0+70.3	0+86.3	#1129	#632	2917 W. Maple	320 S. Chase	8-22-29	5-29-29
1+0	118.20	109.45	8.75		1+14.0		#201		2925 W. Maple		6-3-46	
2+0	113.50	109.55	3.95	1+60	2+29.0	2+31.5	#478		3001 W. Maple		8-3-46	
					2+57.8	2+60.3	#575		3009 W. Maple	R see next pg	5-20-29	
					2+85.6	2+88.1	#1333		3018 W. Maple		12-26-47	
3+0	113.60	109.65	3.95		3+11.5	3+14.0						
				3+19.4	3+36.5	3+39.0		#438	442 Custer		8-20-31	
					3+62.7	3+65.2						
					3+88.7	3+91.2						
4+0	114.50	109.75	4.75		4+14.3	4+16.8						
				4+89	4+38.8	4+41.3	#66		3025 W. Maple		5-7-37	4-19-32
					4+55.8	4+58.3						
5+0	114.10	109.85	4.25		5+39.6	5+42.1						
					5+66.1	5+68.6	#803	15405	3101 W. Maple	4-29-31	7-3-29	4-3-62
6+0	114.30	109.95	4.35		5+91.5	5+94.0		15406			1-3-62	
					6+26.3	6+28.8		15407			4-3-62	
					6+57.0	6+59.5	#8		3111 W. Maple		1-3-30	
				6+96	6+82.2	6+84.7		00381	3118-28 Mentor		5-30-91	2-25-59
7+0	116.40	110.05	6.35		7+31.3	7+33.8	#804	00381	3127 W. Maple	318-25 Mentor	7-3-29	5-30-91
					7+74.0	7+76.5						
					7+95.8	7+98.3		#3141	3130 Mentor		1-10-55	
8+0	116.80	110.15	6.65		8+20.8	8+23.3		#1990	3129 W. Maple		5-8-47	
					8+46.1	8+48.6						
					8+71.1	8+73.6		C11252	3138-40 Mentor		4-13-79	
9+0	114.90	110.25	4.65	9+02.9	9+07.5	9+10.0						
					9+33.2	9+35.7						
					9+58.5	9+61.0	#2733		3147 W. Maple		2-26-46	
					9+83.0	9+85.5		#5175	3148 Mentor		7-9-51	
10+0	113.80	110.35	3.45		10+13.9	10+16.4	#4082	C03192	3149 W. Maple		4-7-55	2-9-71
					10+49.9	10+52.4		#76	310 S. Sheridan		2-17-30	
11+0	113.40	110.45	2.95		10+70.0	10+72.5	C70317		3149 W. MAPLE		6-13-79	
11+10	113.40	110.46	2.94	11+10	11+05.2	11+07.7						

2000-00860-3023 W Maple St - Photo Rooter - 4/7/00 4" SCH40 Install 1 TWIN CLEAN OUT

C71223-310 S. Sheridan - New Conn. 4-13-79 (10+54)

#2910 Used old connection @ 2917 W. Maple - 11-29-40 - V.H. Patton.
 #2512 - J.E. Lansdowne - 3027 University - Tap - 9-12-50
 C4991350 #3119 - Tap - 326 Chase - 6-30-51
 #3142 - 3124 Mentor - 7-10-55 - Roy Ferrell Pibq. Co. - Redd Rooter 4-29-03-4" PVC - (1 twin) Co.
 #1679 - Tap - 3137 W. Maple - 6-18-52 - Frederick Pibq. Co.
 #1680 - Tap - 3143 W. Maple - 6-18-52 - Frederick Pibq. Co.
 #1681 - Tap - 3147 W. Maple - 6-18-52 - Frederick Pibq. Co.
 #290 - Tap - 3150 Mentor - 3-8-52 - Max Hinshaw.
 #1884 & 1885 - Taps - 3145 Maple - 7-16-52 - Frederick Pibq. Co.
 #1284 - Tap - 3145 Maple - 6-29-56 - Frederick Pibq. Co.
 #1283 - Tap - 3143 Maple - 6-29-56 - Frederick Pibq. Co.
 5607 ✓ 514 S Chase 11-6-87 m. Donald - Al Henning - 4150 S (75.5' - 3137.5)