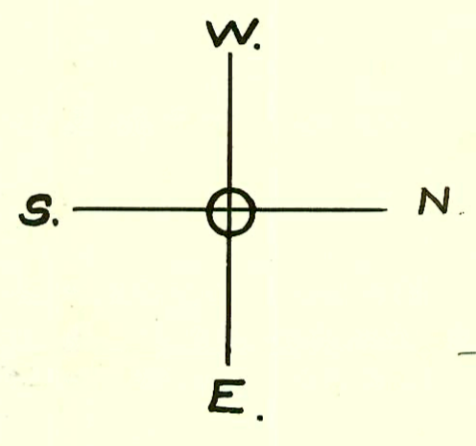
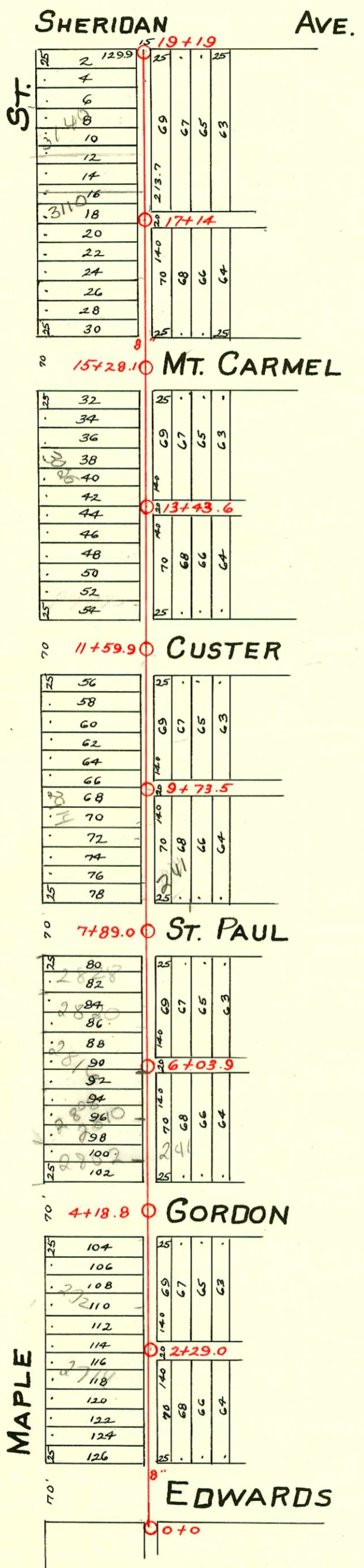


PART OF LAT. 16 - DIST. A-S.S.No.21  
Carter - 1929



1=150

TU Record from 4/03 shows  
TAP at 103' E of Mt 6+03.9  
for 241 S. Gordon

2004-03156 - 241 S St Paul - Reddi Router 12-7-04 4" pvc 44, 4" wye repaired, 100' W. 4" clo @ base,  
(1) 45 vert. replaced entire line - Dist Allegat (shallow)

CONSTRUCTION RECORD						SERVICE RECORD						
STATION	ELEVATION		Depth	MANHOLE	4-INCH "Y" BRANCHES		No. of Permit		House Number		DATE OF PERMITS	
	Ground	Grade			North West	South East	North West	South East	North West	South East	North West	South East
0+0	112.40	107.35	5.05	0+0								
1+0	112.10	107.45	4.65					#10970 #1793	2702 Maple 257 S. Edwards		10-17-65 9-24-49	
								#1078 #1205	2706 Maple		9-25-50 11-26-47	
2+0	112.00	107.55	4.45					#1553 #1514	2718 W Maple 2718 W Maple 2718 W Maple		1-22-48 6-8-55	
				2+29				#1215 #1718	2718 W Maple 2724 W Maple		9-4-29 1-25-74 12-3-41	
3+0	113.40	107.65	5.75					C53499 C53500	2728 W Maple 2728 W Maple		1-29-76 1-29-76	
4+0	112.40	107.75	4.65	4+18.8				#173	2802 W Maple		4-22-37	
5+0	113.50	107.85	5.65					#263	2810 W Maple	See below 26' W of EPL + 6.5' from main	3-13-01 3-27-30	
6+0	114.20	107.95	6.25	6+03.9				#337	2816 W Maple		6-27-46	
								#858	2830 W Maple		12-15-80 9-15-30	
7+0	114.20	108.05	6.15					#1688	2828 W Maple		12-2-29	
				7+89.0				C6494	2828 W Maple		9-8-82	
8+0	114.20	108.15	6.05					#1005 #418	2902 W Maple 2908 W Maple		11-27-46 8-3-31	
9+0	113.00	108.25	4.75					#917 #386	2916 W Maple 2914 W Maple		7-23-29 9-24-36	
				9+73.5								
10+0	113.70	108.35	5.35					#1943 #549	2918 W Maple 242 S. Custer		4-3-48 12-9-31	
11+0	114.50	108.45	6.05	11+59.9				#638	2924 W Maple		6-3-29	
12+0	117.40	108.55	8.85					#1037	3004 W Maple		8-12-29	
13+0	115.40	108.65	6.75					#625	3008 W Maple		12-3-37	
				13+43.6				C71423 #773	3010 W Maple		4-25-77 6-27-29	
14+0	114.80	108.75	6.05					#861 #1991	3026 W Maple 3028 W Maple		7-13-29 11-27-39	
15+0	114.50	108.85	5.65									
				15+28.1								
16+0	114.20	108.95	5.25					#824	3108 W Maple		10-24-46	
17+0	113.30	109.05	4.25					#313 #1826 #928 #1128	3110 W Maple 3112 W Maple 3110 W Maple 3130 W Maple	Rept entire line	6-22-37 9-12-39 7-24-29 8-22-29	
				17+14								
18+0	113.70	109.15	4.55					#603	3140 W Maple		5-24-29	
								#655 #593	240 S Sheridan		10-27-72 6-11-30	
								#55606 #3902 #676	3128 W Maple		5-25-76 7-12-67 6-11-29	
19+0	113.40	109.25	4.15									
19+19	113.40	109.27	4.13	19+19								

2001-00263-21601-2808 W Maple - Overnight Sues - 4" SCH 40 CITY TAP 84' E MH 6703.9 (St 19.9) 17 W IN CO, Dirt Alley cut  
 2001-00264-21601-2810 W Maple - Overnight Sues - 4" SCH 40 CITY TAP 41.6' E of MH 6703.9 (St 62.3) 17 W IN CO, NO BELTOS - Dirt Alley Cut

C 10971 - 2702 Maple + 257 S. Edwards - top Regg Alley 10-17-65 (1+20)  
 #550 - Tap - 242 S. St. Paul - 10-21-37 - Carl Carr.  
 #1562 - Tap - 241 S. St. Paul - 4-20-42 - Jim Hanna.  
 #1575 - Tap - 242 S. Gordon - 3-8-47 - Harley Riggs.  
 Tap - School Bldg. N.W. Corner Sheridan & Maple - 9-10-52 - Receipt #1629 - J.N. Hanna.  
 240 S Sheridan - connection at sta 18+64 - field verified by T.V. dye testing on 10/17/99 per C. Fujit Sewer Maint.