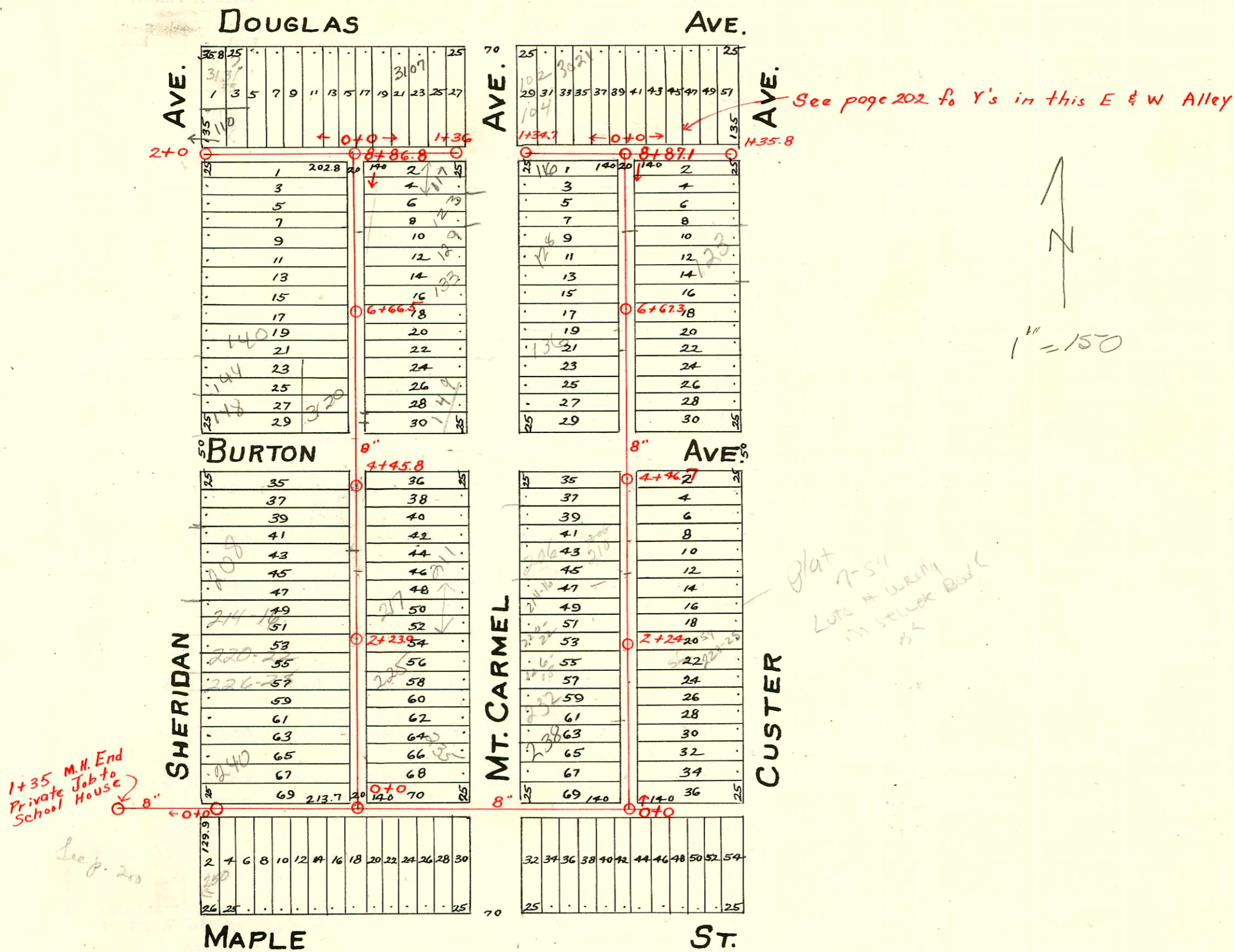


PART OF LAT. 16 - DIST. A - S. S. No. 21

Carter - 1921



- 2007-00072-134 S Sheridan-8.6' South of mtl - Wichita Ex - 11/1/07
- 2003-00341-2/7/03-232 S Mt Carmel- Redd Rootr- 4" PVC40 - 4" WYE REP. 102.5' S of MH 2124, 4" TWIN CO @ house - Replaced entire line, 2422, dirt alley cut
- 2003-00371-2/11/03-238 S Mt Carmel- Redd Rootr- 4" PVC-4" WYE repaired 78' N of MH 0200 (0+71) 4" TWIN CO @ house, Replaced entire line - dirt alley cut - NO bends
- 2001-00276-2/7/01-133 S. MTCARMEI- IRWIN PLBG- 4" SCH 40 - 14' S of MH 6766.5 (6780.5) Repl all but lower 2' - TWIN CO, 1V22, Dirt Alley cut
- 2000-00501-2/24/00-123 S. Mt Carmel- Wichita Exc- 4" SCH 40 - Replace lower 18' of line to point 2' from Wye. (Wye is apr 112' N of MH 6766.5) Dirt Alley cut - 1H22
- 2005-02794-11/8/05-123 S Mt. Carmel- wye repair 107' South of mtl. (1) 45H (3) Fernco, (1) twindo, shallow. Pipeburst 4" pvc, tv tape viewed by inspector Grandstaff + was Satisf. - Roto Rooter
- 234 S. Sheridan - connection field verified by T.V. and dye testing old connect at sta 0+95 1017199 per E. Fusit Sewer Maint.
- 97-2710-7 2-18-97 128 S Mt Carmel -
- #1905 1-23-92 206 S Mt Carmel - Keok house - Boardman -

CONSTRUCTION RECORD

SERVICE RECORD

Line in N & S Alley bet. Sheridan & Mt. Carmel

Line in E & W Alley, W. to Sheridan.

Line in E & W Alley - East to Mt. Carmel

Line in N & S Alley bet. Mt. Carmel & Custer.

Table with columns: STATION, ELEVATION (Ground, Grade), Depth, MANHOLE, 4-INCH 'Y' BRANCHES (North West, South East), No. of Permit (North West, South East), House Number (North West, South East), DATE OF PERMITS (North West, South East). Rows include stationing from 0+0 to 8+86.8 and 0+0 to 8+87.1.

#2655 - Repair - 310 W. Douglas - Riggs Plbg. - 11-19-54
#3842 - Private line - 3440 Maple - Lawrence School - Jim Hanno - 1-23-53
#6931 - Wye set - 209 S. Sheridan - School - Private line - Rex Robertson - 12-27-51
#112 - Tap in E & W sewer - 234 S. Mt. Carmel - 3-13-50 - Eugene Reynolds
#6705 - Tap - 3011 Burton - 12-4-51 - H. P. Dunaway
#410 - Tap - 3123 W. Douglas - 6-2-49 - Tess Hanno
#2112 - Private line - 200 S. Sheridan - 6-20-45 - Horley Riggs
#1063 - Tap - 3131 W. Douglas - 9-2-46 - Tess Hanno (106.0)
#1444 - Tap - Mt. S. Sheridan - 2-17-47 - Wichita Plbg. Co.
#1652 - Tap - 203 S. Mt. Carmel - 3-20-47 - Frederick Plbg. Co.
#5792 - Tap - 239 - 201 S. Mt. Carmel - 12-3-57 (see 1479.9)
#519 - Tap - 119 - 201 S. Mt. Carmel - 10-29-58 8116.1
#59268 - Tap - 202 S. Mt. Carmel - 12-23-76 - B. P. Dunaway (411.9)