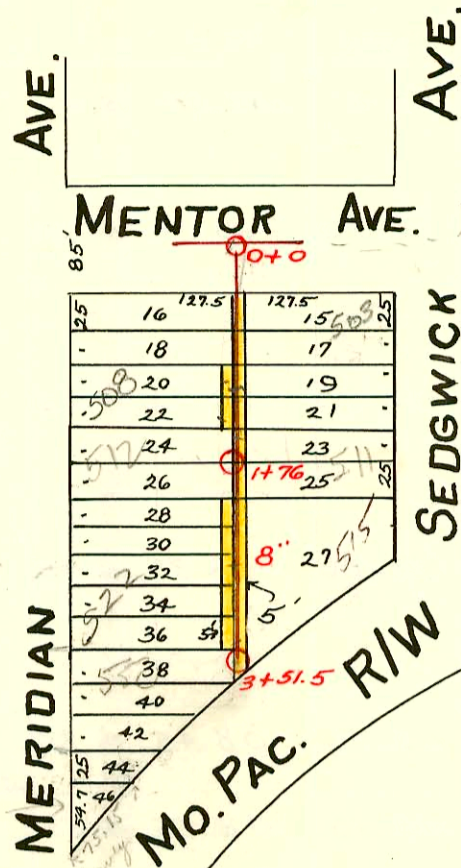
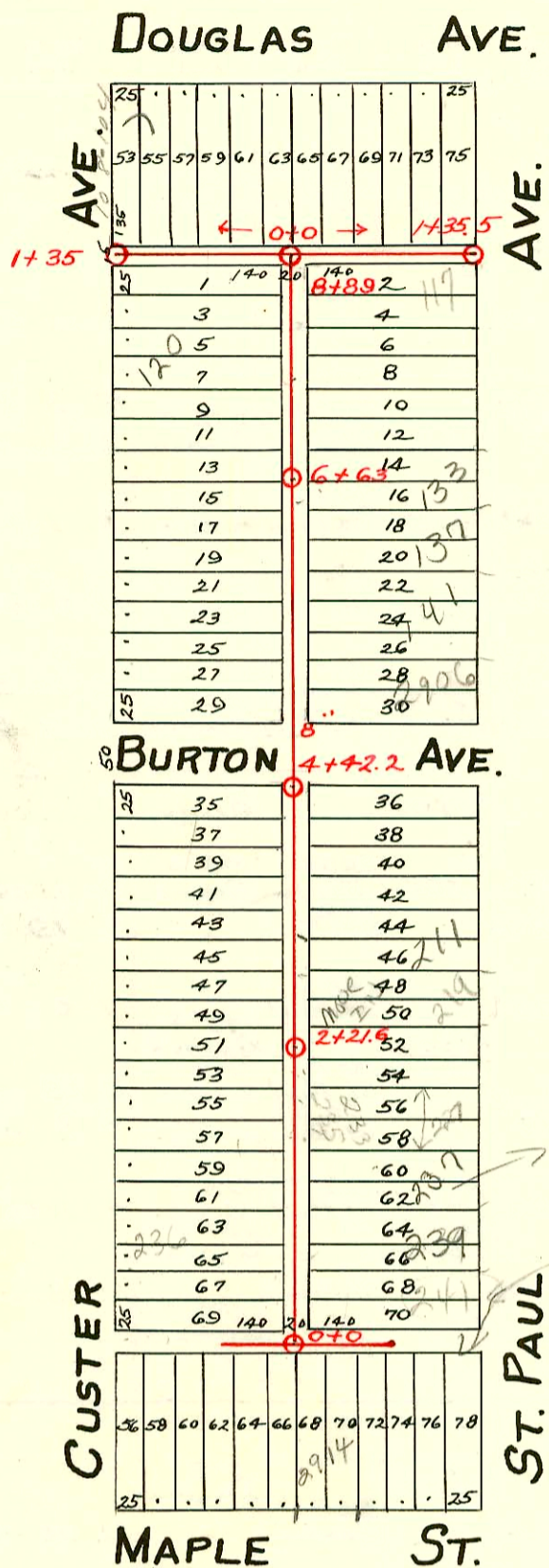


Carter - 1929



add chg. JO ST PAUL
233-235 S. ST PAUL
See p. 200

Easement filed Dec. 16, 1929, from H.E. Conqhenour & wife. The rear 5' of lots 15, 17, 19 & 21, Maple St. Addn. Said lots face Sedgwick Ave.

N/C SWR 2000-03132-508 S Meridian - wye @ 95.5' S mtl, shallow, 4" twin riser clo, @ 145, 4" sch 40 PVC - Roto etc. 12 1/2' dia

Easement filed Dec. 16, 1929, from Zettie F. Wharry & husband. The rear 5' of lot 27, Maple St. Addn.

Easement filed Dec. 16, 1929, from Zettie M. Wharry & husband. The rear 5' of lots 28, 30, 32 & 34, and beg. 122.5' E. of the W.P.L. a strip 10' wide parallel to W.P.L. of lot 36, Maple St. Addn.

Easement filed Dec. 16, 1929, from J.S. Giwosky & wife. The rear 5' of lots 20 & 22, Maple St. Addn.

Easement filed Dec. 16, 1929, from J. Wirth Sargent & wife. The rear 5' of Lots 23 & 25, Maple St. Addn. Grantors make no covenants as to title or right to grant this easement.

#B 313 top-trailer - 511 S. Sedgwick - Fish Alley, 10-23-63 (1+79)

#B 743 top-trailer - 500 S. Meridian - Van White, 1-27-64 (3+51.5)

B 3769 top-trailer - 550 S. Meridian - Zerkovich Alley, 7-9-65 (3+41.5)

R-1979-00640-9/10/79-239 S St Paul - Roto - 4" sch 40 - Replace co at house (4' of line)

99-4813-7-2/22/99-3021 W Douglas - McClung - 4" sch 40 Replace upper 40'

SWR 2000 02359 10/30/00 133 S. ST PAUL - Reddi-Kootik - 4" sch 40 - 4" ROW CO - DIRT ALLEY CUT
Replaced all but lower 21' of sewer

SWR 2003-01101 4/22/03 508 S. Meridian Betzen Renchng.

CONSTRUCTION RECORD

SERVICE RECORD

See Page 201 for plot.

See Page 201 for plot.

Line in N. & S. Alley Bet. Custer & St. Paul

Line in E & W. Alley.

Line in E & W Alley.

Line Bet. Meridian & Sedgwick.

STATION	ELEVATION		Depth	MANHOLE	4-INCH "Y" BRANCHES		No. of Permit		House Number		DATE OF PERMITS		
	Ground	Grade			North West	South East	North West	South East	North West	South East	North West	South East	
0+0	113.40	109.80	3.60	0+0	0+19.5		#1461		3015 W. Douglas		2-17-47		
					0+47.5								
					0+72.2	0+74.6	#1948137		3021 W. Douglas	see next pg	3-22-49		
1+0	113.40	109.90	3.50		1+0		#2922		152-104 S. Mt. Carmel		12-23-49		
1+34.7	113.80	109.95	3.85	1+34.7	1+30.0		#4117				9-15-65		
0+0	113.40	109.80	3.60	0+0	0+06		#948		3011 W. R. Douglas		5-17-85		
					0+32						10-14-30		
					0+56.5								
					0+78.5								
1+0	113.20	109.90	3.30		1+04	1+00.8	#6275	#63	103-85 Custer	117 S. Custer	5-25-77	4-5-35	
1+35.8	113.50	109.95	3.55	1+35.8	1+30.8		16076		104-8 Custer		4-9-86		
0+0	113.20	108.45	4.75	0+0	0+21	0+18.5	#1284		236 S. Custer		9-13-29		
					0+49.6	0+47.1							
					0+74	0+71.5			1999-00640 #691	239 S. R. St. Paul	see next	9-10-99	
1+0	113.20	108.55	4.65		0+99.5	0+97.0	#479	#310	234 S. Custer	237 S. St. Paul	5-11-88	10-23-78	
					1+21.8	1+19.3	#550		1688	233 S. St. Paul		6-27-47	
					1+46.3	1+43.8						11-4-80	
					1+68.9	1+66.4	#2242		232 S. Custer		4-18-40		
2+0	113.10	108.65	4.45		1+94	1+91.5	#237		227 S. St. Paul		1-30-7	2-28-52	
					2+21.6	2+30.4	2+27.9	#1665	#2464	222 S. Custer	223 S. St. Paul	3-22-47	4-12-49
					2+55.5	2+53.0							
					2+80.2	2+77.7			95-8497	219 S. St. Paul		6-6-95	
3+0	113.10	108.75	4.35		3+05.5	3+03							
					3+30.1	3+27.6	#1663	#2154	212 S. Custer	211 S. St. Paul	3-22-47	3-12-49	
					3+55.1	3+52.6							
					3+80.5	3+78	#1669	#1255	208 S. Custer	207 S. St. Paul	11-19-85	6-10-50	
4+0	113.10	108.85	4.25		4+05	4+02.5							
					4+42.2	4+29.6	4+27.1	#1668	#1296	202 S. Custer	203 S. St. Paul	6-15-87	6-15-50
5+0	113.00	108.95	4.05		5+12.5	5+10	#548		140 S. Custer		8-2-48		
					5+37.8	5+35.3							
					5+62.9	5+60.4			#2570	2906-08 Burton		11-25-49	
					5+88.2	5+85.7	#3630		146 S. Custer		1-11-51		
6+0	113.20	109.05	4.15		6+12.5	6+10							
					6+63.0	6+45.5	6+43.0	#430	#392	138 S. Custer	135 S. St. Paul	10-17-36	7-13-48
7+0	113.60	109.15	4.45		7+85.9	7+83.4	#51		124 S. Custer		5-22-48		
					7+11.5	7+09							
					7+35.3	7+32.8			#598	127 S. St. Paul		11-13-37	
					7+60.5	7+58.0			#1212	122 S. Custer		11-29-47	
8+0	113.40	109.25	4.15		8+85.3	8+82.8	#1506	#1154	120 S. Custer	121 S. St. Paul	11-12-48	10-9-48	
					8+12.5	8+10.0							
8+89	113.90	109.35	4.55	8+89	8+42.5	8+40.0							
0+0	113.20	109.45	3.75	0+0	0+72.8	0+75	#1034	#917	118 S. Custer	2921 W. Douglas	8-10-29	10-1-30	
					0+74.5	0+74.5						12-23-49	
1+0	113.60	109.55	4.05		1+00	1+00						9-13-48	
1+35	113.60	109.60	4.00	1+35	1+29.5	1+29.5							
0+0	113.20	109.45	3.75	0+0	0+82	0+84.5		#417	2907 W. Douglas		7-15-47		
1+0	113.60	109.55	4.05		1+06.3	1+06.3		#635	2903 W. Douglas		8-21-47		
1+35.5	113.60	109.60	4.00	1+35.5	1+30.0	1+30.0							
0+0	112.00	106.60	5.4	0+0	0+46.5	0+44	#730		502 S. Meridian		7-1-49		
					0+65.2	0+67.7							
					0+95.5	0+93.0							
1+0	111.40	106.70	4.7		1+17	1+19.5	#1412		508 S. Meridian		4-22-83	9-8-86	
					1+47.8	1+45.3	#1243		416 S. Meridian		10-3-29		
					1+98.5	1+96					9-9-29		
2+0	111.80	106.80	5.0		2+25.2	2+22.7	#115		418 S. Meridian		3-14-50		
					2+48.3	2+45.8							
					2+72.5	2+70.0	#4723		520 S. Meridian		2-4-53		
					2+95.3	2+92.8	#1045		420 S. Meridian		8-12-29		
3+0	112.00	106.90	5.1		3+19.7	3+17.2							
					3+51.5	3+48	3+50.5						
3+51.5	111.30	106.95	5.35	3+51.5									

Top #1683 - 203 S. Sedgwick 8-8-44
 Top #1664 - 218 S. Custer 3-22-47
 Top #1089 - 117 S. St. Paul 11-10-47
 Top #675 - 219 S. St. Paul 8-13-48
 Top #721A - 515 S. Sedgwick 1-10-56
 #2937 - Used old connection - 234 S. Custer 12-27-49 - Max Hinshaw.
 #4210 - Top - 141 S. St. Paul 3-26-51 - Kendall Plbg.
 Top #117 - 141 S. St. Paul 4-24-58
 14306 top - 526 S. Meridian 6-15-61
 Top line in Mentor - Roy McCoy (75 ft. W. of MH 58+848)
 Wichita Plbg.
 Robinson Plbg.
 Simmons Plbg. (Slo at Sta 2+85.1)
 92-21220-7 8/17/92 512 S. Meridian - Honey (1+17.0+17)
 (41502 35)