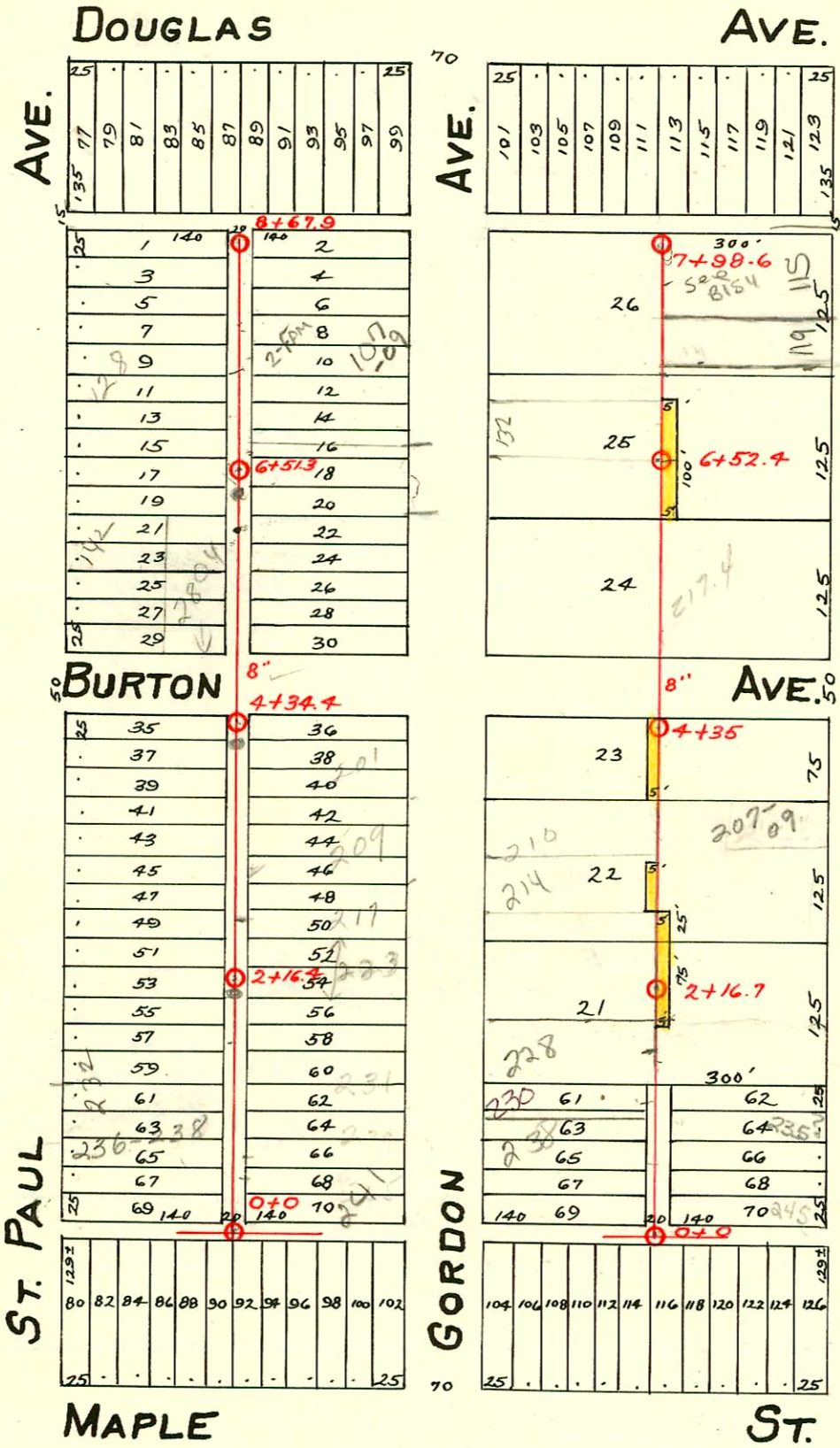


PART OF LAT. 16 - DIST. A - S.S. No. 21

Carter - 1929



Easement filed Dec. 16, 1929, from Cecil O. & Lucile B. Fyle, his wife, The rear 5' of the south 100' of the E. 1/2 of lot 25 in Smithson Addn.

Easement filed Dec. 16, 1929, from E. L. Stewart & Emily Stewart, his wife. The rear 5' of the N. 75' of E 1/2 of Lot 21 & the rear 5' of the S 25' of E 1/2 of lot 22 both lots in Smithsons Addn.

Easement filed Dec. 16, 1929, from Charles Farmer & Minnie Farmer, his wife. The rear 5' of the W. 1/2 of Lot 23, Smithsons Addn.

Easement filed Dec. 16, 1929, from Adrien Sautter & Susie Sautter, his wife. The rear 5' of the S. 50' of the N. 100' of the W 1/2 Lot 22, Smithson Addn.

### CONSTRUCTION RECORD

### SERVICE RECORD

Line bet  
St. Paul &  
Gordon

STATION	ELEVATION		Depth	MANHOLE	4-INCH "Y" BRANCHES		No. of Permit		House Number		DATE OF PERMITS	
	Ground	Grade			North West	South East	North West	South East	North West	South East	North West	South East
0+0	114.0	108.05	5.95	0+0	0+24.4	0+21.9						
					0+49.2	0+46.7						
					0+75.2	0+72.7	#546		236 S. St. Paul	239 S. Gordon	9-29-47	8-22-46
1+0	113.10	108.15	4.95		1+00.3	0+97.8						
					1+24.9	1+22.4						
					1+50.3	1+47.8	#1685		232 S. St. Paul		7-20-50	
					1+74.6	1+72.1						
2+0	112.90	108.25	4.65		2+00.4	1+97.5	#2340		226 S. St. Paul		5-3-48	
					2+26.7	2+24.2	#717	#3279	222 S. St. Paul	223 S. Gordon	6-30-49	2-11-50
					2+49.7	2+47.2						
					2+75.3	2+72.8	#1043	#3280	218 S. St. Paul	217 S. Gordon	8-1-49	2-11-50
3+0	112.80	108.35	4.45		3+01	2+98.5						
					3+27.6	3+25.1	#2383	#29984	212 S. St. Paul	209 S. Gordon	11-9-49	8-8-68
					3+51.2	3+48.7						
					3+77.5	3+75	#1254		206 S. St. Paul		4-4-55	
4+0	112.80	108.45	4.35		4+02	3+99.5	#2266	#211	202 S. St. Paul	201 S. Gordon	9-7-50	5-12-49
					4+28	4+25.5						
5+0	113.10	108.55	4.55		5+18.3	5+15.8			151 S. Gordon			11-7-45
					5+42.8	5+40.3						
					5+69.6	5+67.1	#5784	#204	2804 Burton	143 S. Gordon	7-11-53	6-3-46
					5+94.3	5+91.8	#4409		142 S. St. Paul		4-19-51	
6+0	113.00	108.65	4.35		6+18.9	6+16.4						
					6+43.9	6+41.4	#375		138 S. St. Paul		7-8-48	
					6+70.5	6+68	#1423		135 S. Gordon		7-6-51	10-5-29
7+0	113.10	108.75	4.35		6+94.6	6+92.1	#711	19342	132 S. St. Paul	135 S. Gordon	8-19-48	10-19-47
					7+19.9	7+17.4	#374		128 S. St. Paul	127 S. Gordon	7-8-48	9-26-48
					7+45	7+42.5						
					7+69.8	7+67.3	#1920	#885	122 S. St. Paul	123 S. Gordon	4-1-48	7-17-29
					7+94.9	7+92.4	#1809		107 S. Gordon			8-30-39
8+0	113.50	108.85	4.65		8+20.5	8+18	#3079		118 S. St. Paul		1-18-50	
					8+45.5	8+43				105 S. Gordon		10-7-29
8+67.9	113.40	108.95	4.45	8+67.9	8+63.2	8+60.7						

Line bet.  
Gordon &  
Edwards

0+0	112.1	107.70	4.4	0+0	0+14.0	0+11.5						
					0+39	0+36.5	#1502		219 S. Edwards			10-21-29
					0+64	0+61.5	#1445		238 S. Gordon		12-20-46	
					0+89	0+86.5						
1+0	114.1	107.80	6.3		1+14	1+11.5	#100	#89	230 S. Gordon	235 S. Edwards	4-26-49	11-6-79
					1+39	1+36.5						2-19-30
						1+47.8			237 S. Edwards			7-21-47
					1+64	1+61.5	#1278		228 S. Gordon		9-13-29	
2+0	113.4	107.90	5.5		1+89	1+86.5	#2345		224 S. Gordon		11-5-49	
					2+16.7	2+23.2	#1594		225 S. Edwards			11-5-29
					2+64.5	2+62.0			217 S. Edwards			?
					2+88.5	2+86.0	#1772		214 S. Gordon		3-7-48	
3+0	112.5	108.00	4.5		3+14.6	3+12.1	#969		215 S. Edwards			10-22-47
					3+39.1	3+36.6	#1771	#326	210 S. Gordon	209 S. Edwards	3-16-48	7-1-47
					3+64.8	3+62.3						
					3+90.3	3+87.8						
4+0	112.8	108.10	4.7		4+15.7	4+13.2						
					4+43.2	4+40.7	#989		200 S. Gordon		11-4-30	
5+0	113.00	108.20	4.8		5+07.6	5+05.1						
					5+34.2	5+31.7			150 S. Gordon		8-30-48	
					5+59.3	5+56.8	#783		149 S. Edwards			7-15-46
					5+85.2	5+82.7	#397		143 S. Edwards			10-21-47
6+0	113.30	108.30	5.0		6+11	6+08.5	#822	#608	Gordon	Edwards	10-23-46	8-14-47
					6+52.4	6+32.8	#80	#391	Gordon	Edwards	5-9-46	7-12-46
					6+62.4	6+59.9	#793		201 S. Edwards			8-8-30
					6+86.7	6+84.2	#677	#997	132 S. Gordon	129 S. Edwards	8-28-47	11-27-46
7+0	113.50	108.40	5.1		7+12.9	7+10.4						
7+98.6	113.80	108.50	5.3	7+98.6	7+38	7+35.5						
					7+63.1	7+60.6	#854	#1696	122 S. Gordon	131 S. Edwards	7-12-29	12-4-29
					7+88.1	7+85.6	#344		Gordon		4-11-30	

R-3000-00452-128 S. St Paul Ave - 21760 - KS DITCHING - (city replaced 3' of main) replaced lower 10' of house.  
sewer - Dirt Alley cut - (7+55.9) 1" dia 4" sch 40 PVC made new tap

Top #1559 - 117 S Edwards - 10-29-29 L. W. Murphy  
 Tap #732 - 242 S. St. Paul - 3-8-38 Carl E. Carl  
 Tap #745 - 243 S. Gordon - 10-3-46 Harley E. Harleys  
 Tap #932 - 220 S. Gordon - 11-14-46 Kenneth Harleys  
 Tap #153 - 144 S. St. Paul - 5-2-49 Coleman Plbg Co  
 Tap #138 - (into E. & W. sewer) - 245 S. Edwards - 6-4-48 Harley Riggs.  
 #3189 - Tap - 231 S. Gordon - 1-31-50 - J.V. Mc Kee.  
 #1428 - Tap - 118 S. Gordon - 6-28-50 - V.H. Patton.  
 #1900 - 118 S. Gordon - N/C 9/18/87 (add tap into house line)

#93-32617 - 206 S. St Paul - Ripon - W/ 16" dia main; 2" Edwards; 2-4" CO. 1" dia  
 2-45" 4" SBR 35 (100M)  
 96-11301-7 229 S. Edwards 7-17-96  
 Ser 1949-00158 16/107-109 S Gordon - N/C -  
 4" sch 40 7+90.9 (Dirt Alley cut) Padgett Exc