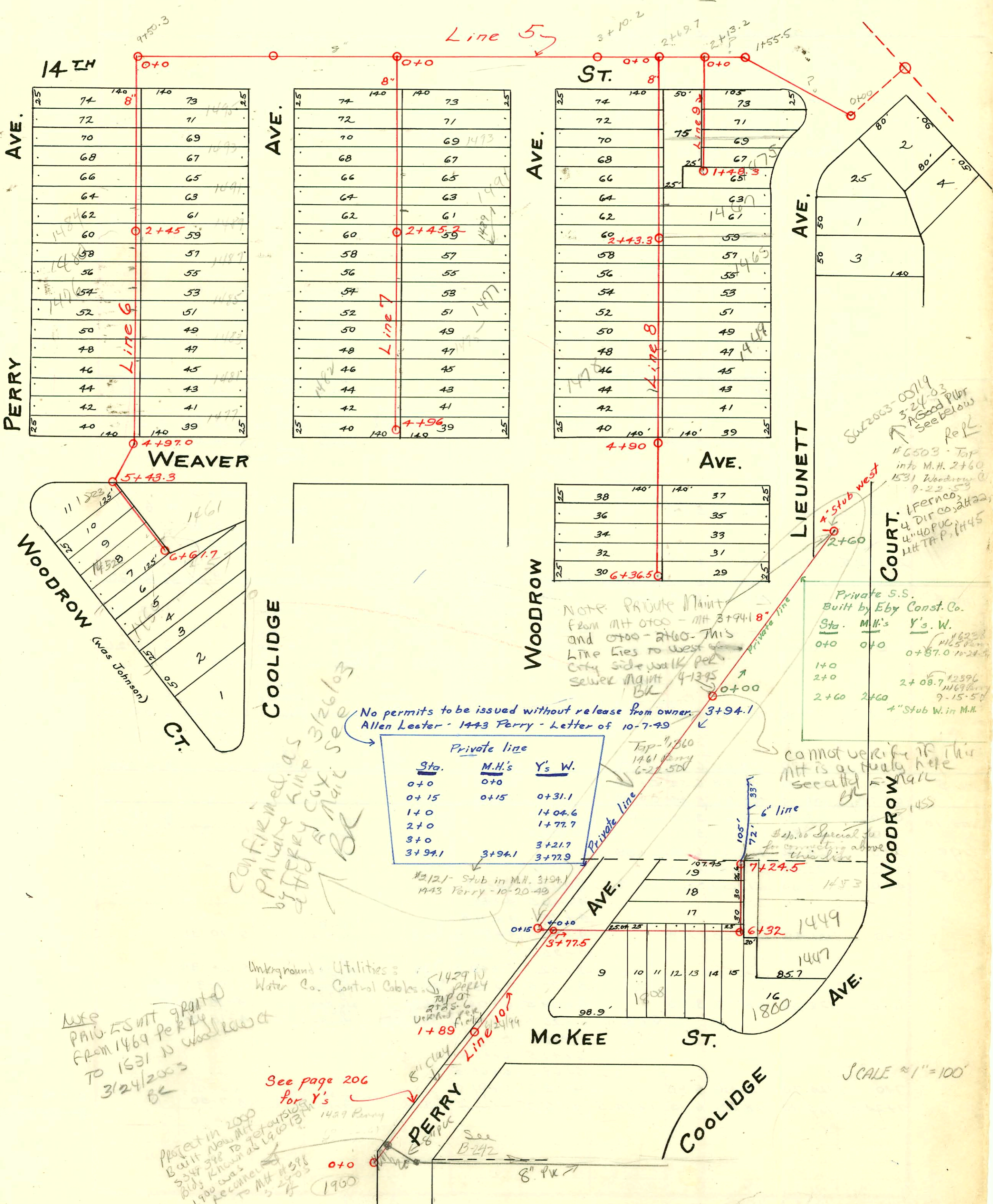


Meilert - 1929



74	140	73
72		71
70		69
68		67
66		65
64		63
62		61
60	2+45	59
58		57
56		55
54		53
52		51
50		49
48		47
46		45
44		43
42		41
40	4+97.0	39

74	140	73
72		71
70		69
68		67
66		65
64		63
62		61
60	2+45.2	59
58		57
56		55
54		53
52		51
50		49
48		47
46		45
44		43
42		41
40	4+96	39

74	140	73
72		71
70		69
68		67
66		65
64		63
62		61
60	2+43.3	59
58		57
56		55
54		53
52		51
50		49
48		47
46		45
44		43
42		41
40	4+90	39

38	140	37
36		35
34		33
32		31
30	6+36.5	29

Private line

Sta.	M.H.'s	Y's W.
0+0	0+0	
0+15	0+15	0+31.1
1+0		1+04.6
2+0		1+77.7
3+0		3+21.7
3+94.1	3+94.1	3+77.9

Private S.S. Built by Eby Const. Co.
 Sta. M.H.'s Y's W.
 0+0 0+0 0+87.0
 1+0
 2+0 2+08.7
 2+60 2+60 4" Stub W. in M.H.

Confirmed as private line by Perry Cox 3/26/03
 See page 206 for Y's

Like priv. S.S. with grant from 1469 Perry to 1631 N Woodrow Ct 3/24/2003

Project in 2000 Built New M.H. 3347 388 To get out of bid known as 1469 Perry 1900 was reconnected to M.H. 3378 3-27-03

TWP - B1724 - 1450 Woodrow Ct. - Moon & Sons - 8-3-64 (Tap M.H. 6767.7)
 99-10675-7 5/26/99 AE Henning - 4" SCH 40 - Predco 103' N M.H. 4797 (3+94) 1V45, 1Fernco

SCALE 1" = 100'

CONSTRUCTION RECORD

SERVICE RECORD

Line 6

Line 7

Line 8

Line 9

STATION	ELEVATION		Depth	MANHOLE	4-INCH "Y" BRANCHES		No. of Permit		House Number		DATE OF PERMITS	
	Ground	Grade			North West	South East	North West	South East	North West	South East	North West	South East
0+0	128.40	112.75	10.65	0+0	0+39.3	0+36.8			1496	1495		
					0+63.0	0+60.5	#1962	#509	Ferry	Coolidge	11-8-39	11-23-36
1+0	123.55	113.25	10.30		0+89.3	0+86.8			1492	1493		
					1+13.6	1+11.1	#1961	#1759	Ferry	Coolidge	11-8-39	12-26-29
					1+39.3	1+36.8			1488			
					1+65.0	1+62.5	#2008		Ferry		12-5-39	
2+0	123.90	113.74	10.16		1+90.0	1+87.5			#11	1491		
					2+16.8	2+14.3	#2007	#88	Ferry	Coolidge	12-5-39	2-19-30
				2+45	2+39.3	2+36.8	#2107	#56	Ferry	Coolidge	2-28-40	2-12-30
					2+67.4	2+64.9			1476			
3+0	123.53	114.23	9.30		2+93.0	2+90.5	#2108		Ferry		2-28-40	
					3+19.3	3+16.8			#607	1483		
					3+45.0	3+42.5	#2298		Ferry		5-8-40	
					3+70.3	3+67.8			#457	1483		
4+0	123.48	114.72	8.76		3+96.5	3+94.0	#1605		Coolidge		10-28-36	5-26-39
					4+21.2	4+18.7	#2498		Ferry		7-15-40	
					4+47.5	4+44.8	#2145	#119	Ferry	Coolidge	3-19-40	10-1-38
					4+73.3	4+70.8						
5+0	124.78	115.20	9.58	4+97	4+93.6	4+91.1			1823			
				5+43.3	5+54.3	5+51.8	#1670		Weaver		6-22-39	
					5+76.0	5+73.5						
6+0	126.25	115.90	10.35		6+01.8	5+99.3						
					6+26.6	6+24.1	#2294		1452		5-6-40	
6+61.7	126.48	116.02	10.46	MHTAP 6+61.7	6+54.3	6+51.8	#189		Woodrow	Coolidge	8-3-64	4-29-37
0+0	122.01	112.50	9.51	0+0	0+49.5	0+47.0			#164	1495		7-23-35
					0+75.2	0+72.7	#510		Coolidge		11-23-36	
1+0	122.31	112.60	9.71		1+00.1	0+97.6	#103	#44	Coolidge	Woodrow	2-24-30	2-10-30
					1+25.5	1+23.0			1492		7-5-77	
					1+49.0	1+46.5	#104		Coolidge		2-24-30	
					1+74.2	1+71.7	#412		1491		8-21-35	
2+0	121.96	112.70	9.26		1+99.8	1+97.3			1489		4-23-30	
					2+25.5	2+23.0	#1668		Coolidge		11-25-29	
				2+45.2	2+56.0	2+53.5	#1586	#116	Coolidge	Woodrow	11-4-29	6-3-35
					2+81.8	2+79.3						
3+0	121.78	112.80	8.98		3+07.9	3+05.4	#364	#115	1486	1477	9-11-36	9-29-38
					3+31.5	3+29.0						
					3+59	3+56.5	#81	#190	Coolidge	Woodrow	2-18-31	3-13-30
					3+85.5	3+83.0						
4+0	121.91	112.90	9.01		4+10.7	4+08.2	#7019	#1509	1482	1469	11-18-34	10-22-29
					4+36.5	4+34.0			Coolidge	Woodrow		
					4+59.3	4+56.8	#881	#752	Coolidge	Woodrow	9-19-30	7-25-30
4+96	122.55	113.00	9.55	4+96	4+81.8	4+79.3						
0+0	121.52	112.10	9.42	0+0	0+42.3	0+39.8			1496			
					0+66.8	0+64.3	#501		Woodrow		5-14-30	
					0+92.8	0+90.3	#87		1494		2-19-30	
1+0	121.57	112.20	9.37		1+19.1	1+16.6						
					1+44	1+41.5						
					1+69.5	1+67.0	#880		1492		9-19-30	
2+0	121.57	112.30	9.27		1+95.2	1+92.7	#157	#250	Woodrow	Lieunett	7-18-35	10-22-35
					2+21.8	2+19.3						
				2+43.3	2+37.7	2+35.2	#80	#46	1488	1465	3-12-37	5-9-33
					2+70.1	2+67.6			Woodrow	Lieunett		
3+0	121.40	112.40	9.00		2+95.8	2+93.3			1486	1461	7-3-30	6-6-35
					3+21.1	3+18.6	#671	#119	Woodrow	Lieunett	7-10-35	
					3+46.3	3+43.8	#147		1480			
					3+73.0	3+70.5			1453			
4+0	120.97	112.50	8.47		3+97.0	3+94.5			Lieunett		5-9-31	
					4+23.7	4+21.2	#228		1478		10-1-35	
					4+49	4+46.5	#230	#390	Woodrow	Lieunett	10-3-35	7-9-31
					4+75.3	4+72.8						
5+0	121.29	112.60	8.69	4+90	5+02.5	5+00						
					5+28.1	5+25.6						
					5+56.8	5+54.3						
					5+84.7	5+82.2	#1073	#379	1458	1437	12-16-30	4-17-30
6+0	121.69	112.70	8.99		6+13.5	6+11.0	#384		Woodrow	Lieunett	7-6-31	
6+36.5	121.90	112.74	9.22	6+36.5	6+31.5	6+29.0			1452			
							#83		Woodrow	Lieunett	2-19-30	
0+0	121.75	112.10	9.65	0+0		0+34.8						
						0+59.7			#436	1481		10-21-36
						0+85.5						
1+0	121.17	112.20	8.97			1+10.8						
1+48.3	121.19	112.25	8.94	1+48.3	1+41.5	1+39.0						

Tap #464 - 9-11-31 - Stewart Pibg Co.
 #669 - Tap - 1444 Perry - 10-19-51 - Howard Shepherd Pibg Co.
 #2868 - Tap - 1900 Parker - Chas. Callison - 3-28-46
 #44 - Tap - 1455 Johnson - Ray Kendall - 3-10-36 - \$10.00 Special Fee Pd. 11/18/76
 #253 - Tap - 1457 Johnson - L.A. Creed - 5-29-37 - \$25.00 Special Fee Pd.
 #254 - Tap - 1461 Johnson - L.A. Creed - 5-29-37 - \$25.00 Special Fee Pd.
 #869 - Tap - 1471 Lieunett - John Riedel - 5-16-38
 #2526 - Tap - 1456 Woodrow Ct. - Dermody Pibg. - 7-25-40
 #3599 - Tap - 1449 Perry - 12-23-52 - Callison Pibg.
 #1534 - Tap - 1441 Perry - 7-20-54 - Callison Pibg.
 #1708 - Tap - 1437 Perry - 3-31-47 - Ray Bryant - \$25.00 Special Fee Pd.
 #494 - Private - 1462 Woodrow Ct. - Ray Yackley - 7-29-48 - \$25.00 Special Fee Pd.

96-25121-7 121296 1449 10 Lieunett