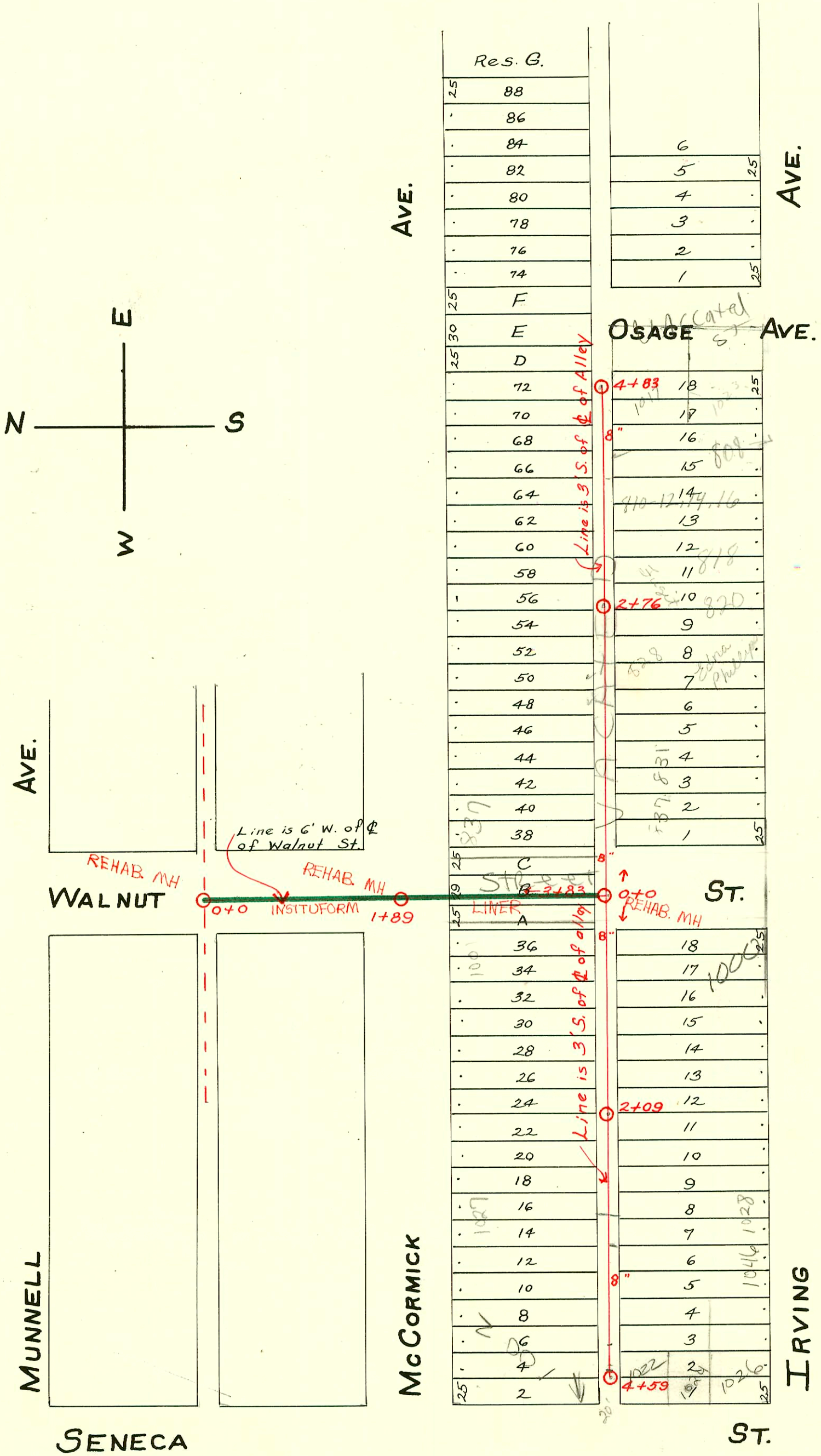
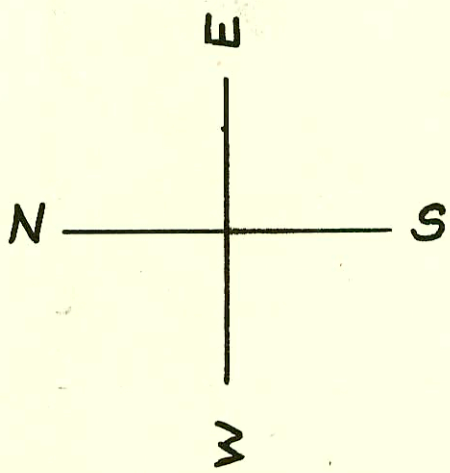


LAT. B - S.S. No. 8

1923



1992 SANITARY SEWER REHABILITATION PROGRAM - PHASE IV
 PROJ. NO. 468-82220 (631879)
 BUILT BY INSITUFORM PLAINS, INC.
 BOOKED 8-6-93 AS PER PLAN

CONSTRUCTION RECORD

SERVICE RECORD

East From M.H. in Walnut Alley S. of McCormick.

West From M.H. in Walnut & Alley So. of McCormick.

STATION	ELEVATION		Depth	MANHOLE	4-INCH "Y" BRANCHES		No. of Permit		House Number		DATE OF PERMITS	
	Ground	Grade			North West	South East	North West	South East	North West	South East	North West	South East
0+0	107.19	103.09	4.10	0+0	0+62	0+64.5	#181	#1758	837 McCormick	840 Irving	4-27-37	12-20-48
1+0	107.54	103.19	4.35		0+87	0+89.5		#1272	836 McCormick	Irving		8-15-47
					1+13	1+15.5			831 McCormick	832 Irving	2-5-87	
					1+38	1+40.5	#180	#2738	836 McCormick	Irving	4-27-37	2-26-46
					1+64	1+66.5		#285	840 McCormick	Irving		6-18-46
					1+89.5	1+92	#121		825 McCormick		2-25-30	
2+0	107.05	103.29	3.76		2+14	2+16.5	#277		823 McCormick		5-23-49	
					2+40	2+42.5	#1123		823 McCormick		6-15-56	
				2+76	2+65	2+67.5	#482	#225	821 McCormick	820 Irving	5-6-25	3-8-83 9-26-35
					2+91	2+93.5			815 McCormick		7-8-31	
3+0	106.06	103.39	2.67		3+16	3+18.5	#388		818 McCormick	Irving		2-2-39
					3+40	3+42.5		#1335				
					3+65.7	3+68.2			808 McCormick			12-29-99 1-20-65
					3+91.5	3+94		#2697				
4+0	106.64	103.49	3.15		4+17	4+19.5	#982		807 McCormick		11-16-26	
					4+42	4+44.5						
4+83	107.60	103.57	1.03	4+83	4+67	4+69.5	2237		801 McCormick		10-3-24	
0+0	107.19	103.09	4.10	0+0	0+23	0+25.5			1001 McCormick		4-6-37	
					0+48	0+50.5	#131					
					0+75	0+77.5			1007 McCormick	1000 R Irving		10-24-00
1+0	108.09	103.19	4.90		1+00	1+02.5	#129	#2011	1007 McCormick	1000 R Irving	4-5-37	10-13-49
					1+25	1+27.5						
					1+50	1+52.5	#27	#214	1015 McCormick	1012 Irving	2-12-37	6-15-48
2+0	107.70	103.29	4.41		1+75	1+77.5						
				2+09	2+01	2+03.5	#28	#7126	1019 McCormick	1016 Irving	2-12-37	12-2-53
					2+26.5	2+29						
					2+52	2+54.5	#182	#6657	1023 McCormick	1020 Irving	4-27-37	10-9-53
3+0	108.29	103.39	4.90		2+77.5	2+80						
					3+03	3+05.5	#183	#154	1027 McCormick	1026 Irving	4-27-37	3-13-29
					3+29	3+31.5		#660	1042 McCormick	Irving		8-2-26
					3+54	3+56.5	#1813		1033 McCormick		8-8-24	
					3+79	3+81.5						
4+0	107.86	103.49	4.37		4+04.5	4+07						
					4+29	4+31.5	#114		1002 S. Seneca		12-16-46	
4+59	108.25	103.55	4.70	4+59	4+54	4+56.5	#1008		1002 McCormick		11-13-30	

* SWR 1999-01536 808 W IRVING - 12/17/77 - Replaced all but lower 2' w/4" SCH 40
 98-24320.7 12-23-98 1046 W IRVING - Misc
 95-94277 6-23-95 1024 S Seneca 4+13
 95-9428-1 6-23-95 1022 S Seneca 4+13

C 21867- 810-12-14-16 21 Irving - Donald Thompson - 11-20-70 Top (3+64.6)

#2353 - Con 8 wye - 832 Irving - S & B Pibq. - 10-25-54 #17763 2-4-87 831 McCormick New Conn - 133 E 40700
 #1281 - Top - 803 McCormick. 610
 #1679 - Private line - 1026 S. Seneca - 8-4-44 - P.O. Fish (4'6" eq M.H. from main) #177572 5-87 831 McCormick SJ - (Sealed off or prep. line at Fence on east side)
 #1209 - Top - 1008 S. Seneca - 12-30-46 - Geo. Sargent.
 #1210 - Private line - 1006 S. Seneca - 12-30-46 - Geo. Sargent.
 #1211 - Private line - 1004 S. Seneca - 12-30-46 - Geo. Sargent.
 #1112 - Top - 1023 S. Osage - 8-31-49 - Geo. Magruder. (From to E-146 for re connection)
 #1858 - Top - 1017 S. Osage - 8-3-56 - Geo. Magruder.
 C17383 - Private line - Seal off - 1006-08-10-12 S. Seneca, Earl Bullen - 12-19-69
 S.O. C33384 - 1014-1018 S. Seneca - at Humming - 7/6/72 #20553 804 W. IRVING - 4/26/80 Repair (at P.O. sewer)