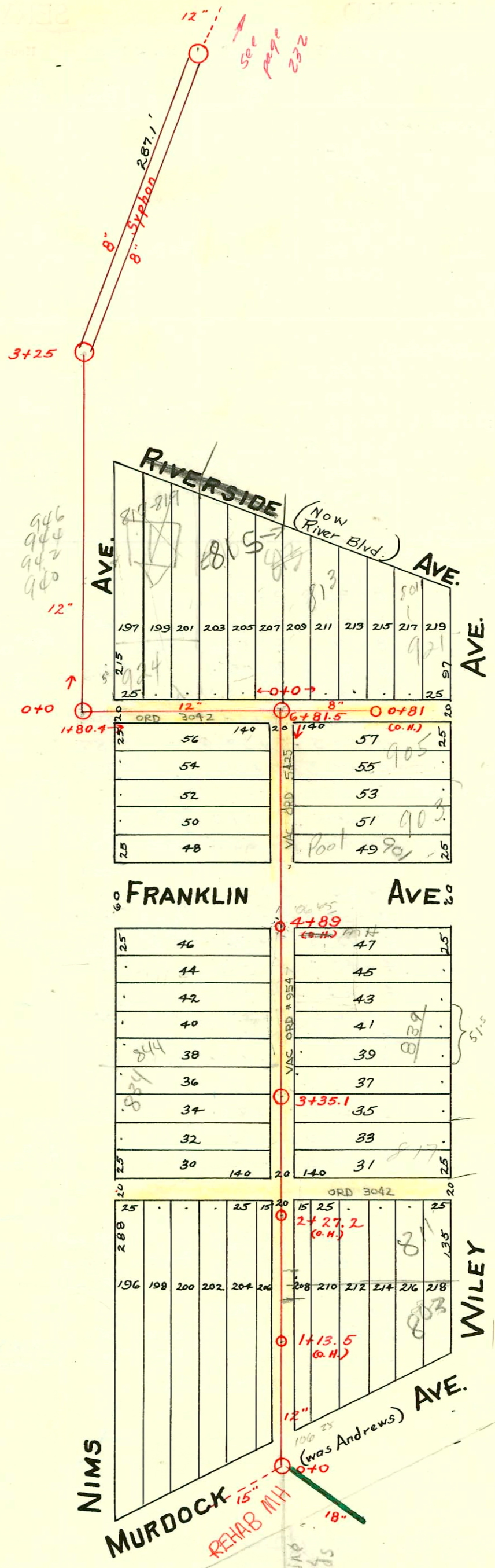


S.S. No. 15- 1910
DIST. Y- S.S. No. 20- 1920



946
944
942
940

197	199	201	203	205	207	209	211	213	215	217	219
215	217	219	221	223	225	227	229	231	233	235	237

56	57
54	55
52	53
50	51
48	49

46	47
44	45
42	43
40	41
38	39
36	37
34	35
32	33
30	31

196	198	200	202	204	206	208	210	212	214	216	218
288	290	292	294	296	298	300	302	304	306	308	310

Central Riverside Park

conc Stand

Local Thru Park

Ponds

Central Riverside Park

Re Goose and Duck Ponds
 This private line carries discharge from Goose pond and Duck pond. Permission to continue discharging to sanitary sewer per D. Warren 1-26-96. However, this is to be temporary measure per Mr. Warren until staff can come up with alternate discharge to storm sewer as drainage of surface water to sanitary sewer is prohibited by sewer ord. Discharge only during off-peak hours (10 pm to 6 AM or 12 noon to 4 pm) no discharge when sewer system is stressed/surcharged by storm events.

PK 1-21-96

CONSTRUCTION RECORD

SERVICE RECORD

STATION	ELEVATION		Depth	MANHOLE	4-INCH "Y" BRANCHES		No. of Permit		House Number		DATE OF PERMITS	
	Ground	Grade			North West	South East	North West	South East	North West	South East	North West	South East
0+81				0+81 (O.H.)	0+78		#420		921 Wiley		5-8-11	
0+0					0+55 0+32 0+09		#691		813 Riverside		6-12-29	
3	113.97	107.44	6.53	3+25								
2	113.81	107.30	6.51			2+44						
1	114.21	107.20	7.01			1+40	#15909 #622	940-42-44-46 Nims		9-15-69 11-22-10		
0	114.54	107.10	7.44	0+0		0+98 0+48	#636					
1	114.08	107.02	7.06	1+80.4		1+01	#1198 #260	12-13-66		4-5-11		
					0+83.0	0+70	#201 #269	3-24-11		4-6-11		
0	113.86	106.92	6.94	0+0	0+61.4	0+41	#690 #615	12-16-10		11-18-10		
6	113.44	106.85	6.59			6+62 6+33.5 6+09.5	#3870 #689	903 Wiley 901 Wiley		4-30-67 12-15-70		
5	112.88	106.75	6.13		5+81.5 5+95.0 5+57		#75290			10-5-62 11-9-79		
4	113.00	106.65	6.35	4+89 (O.H.)	4+47	4+44.5	#911 #877	S.E. Cor. Franklin & Nims 811 Franklin		4-9-35 8-19-25	4-18-24	
					3+83.0	3+80.5	#105 #76	842 30		11-13-62 2-30-79	3-25-12	
					3+58.0	3+55.5						
3	111.72	106.55	5.17	3+35.1	3+31.5	3+29	#342	834 Nims		4-17-11		
					3+06.5	3+04	#127	837 Nims		3-9-11	4-29-14	
					2+83.5	2+81	#836	817 Wiley			11-14-17	
					2+55.5	2+58	#632	825 Wiley			11-21-10	
					2+32.5	2+30	#254			4-27-14		
2	110.93	106.45	4.48		2+07.5	2+05	#5401	820 Nims		7-31-51		
					1+79.5	1+77.0	#631	811 Wiley		11-21-10	12-3-24	
					1+54.5	1+52.0	#812	803 R Wiley		12-18-01	10-5-11	
					1+29.0	1+26.5	#28			1-20-14		
1	111.21	106.35	4.86		1+04.0	1+01.5						
					0+78.0	0+75.5	#701			12-20-10		
0	112.14	106.25	5.88	0+0	0+52.5	0+50	#119			3-8-11		

2001-03204-1218101-803 N Wiley-Sigg Pibg-IFerreo, 1-6x4 Bush, 17winco, 4" PVC40, Replace 15' pipe @ house

96-10587 1-26-96 704 N NIMS - Reroute private line serving office - Reuter - 4" PVC 40

96-9977 1-26-96 704 N NIMS (goose + duck ponds central river side AK) - Both ponds have been discharging into city sewer. This permit redirects sewer for duck pond to flow together with existing sewer for goose pond going N to Murdock and connecting into junction MH for 18" line thru park + 15" main going W in Murdock st. Also known as 0+00 MH for 8" line serving Nims + Wiley N of Murdock

#942 - Top - 938 Nims - 10-9-30 - Simmons Pibg. Co.

#6269 - Top - 800 Wiley - Park Dept. - 8-24-53 - Earl Mc Kee.

#14561 top - trailers 830 Nims - Dick Turnbull 8-14-61 (2+24)

#00114 N.C. 244 NIMS 4-18-50 (top 98.5' S of 4+89.0 - 3+90.5)

#00113 N.C. 866 NIMS 4-18-50 (top 97.5' S of 4+89.0 - 3+91.5)

#00112 N.C. 898 NIMS 4-18-50 (top 78.5' S of 4+89.0 - 4+10.5)

#00111 N.C. 599 FRANKLIN 4-18-50 (top 77.0' S of 4+89.0 - 4+11.4)