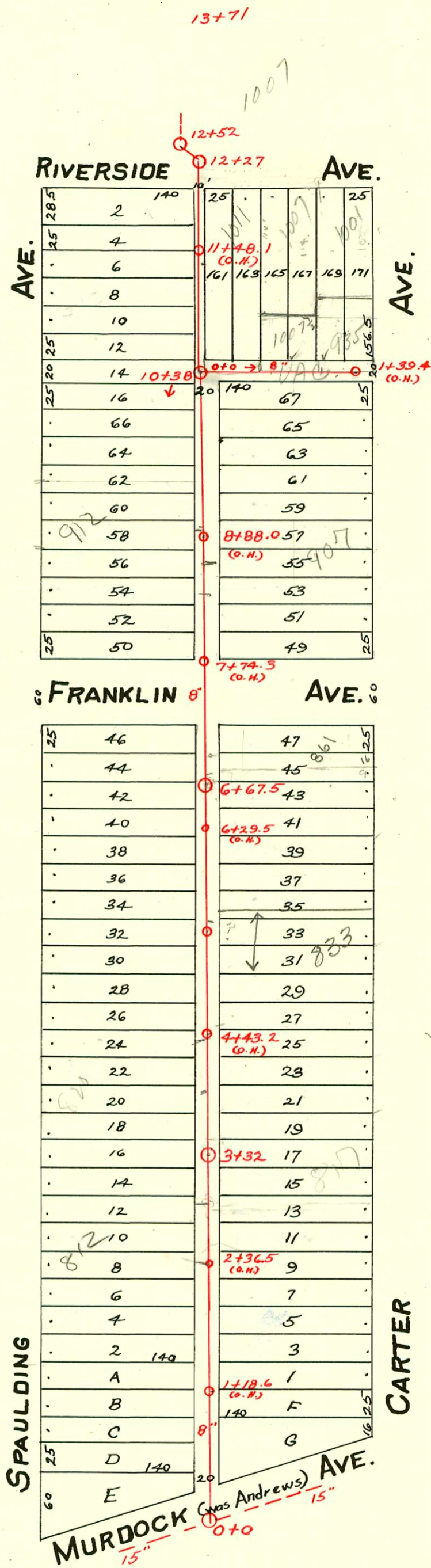


S.S. No. 15- 1910  
Dist. Y- S.S. No. 20- 1920



2006-01299 - 5/19/06 - 868 N Spaulding - 1st outlet (1) 22H, (1) twin do, (1) 45H, 2nd outlet using (1) 45H (1) 22H - Ruto Rooter

CONSTRUCTION RECORD						SERVICE RECORD						
STATION	ELEVATION		Depth	MANHOLE	4-INCH "Y" BRANCHES		No. of Permit		House Number		DATE OF PERMITS	
	Ground	Grade			North West	South East	North West	South East	North West	South East	North West	South East
				1 + 39.4 (0.4)								
1	115.04	109.80	5.24									
	114.80	109.40	5.40		1+09.5		#231		1001 Riverside		5-14-15	
					0+86		#235		1005 Riverside		5-2-18	
0					0+63							
					0+40.5							
	114.01	108.40	5.61	0+0	0+17.5							
13	116.23	108.98	7.25	13+71								
	116.04	108.64	7.20									
12				12+52								
	115.78	108.54	7.24	12+27								
11					11+52		#819		940 Spaulding		10-7-11	
					4" SDR 35 11+37		#324		94-167067 936 Spaulding	1011 N. R. RIVERSIDE	10-14-94	5-26-14
	115.30	108.44	6.86		11+26.5		#678				12-9-10	
10					10+81							
					10+57.5							
	114.02	108.34	5.68	10+38	10+20.5	10+18		#511				5-16-22
9					9+95	9+92.5	#1121		918 Spaulding		12-19-27	
					9+69.5	9+67	#2530	#1095	916 Spaulding		11-12-24	11-7-21
	113.40	108.24	5.16		9+44.5	9+42		#1640				11-8-23
8					8+93	8+91.5	#2002-21 #254		912 Spaulding		9-12-00	
					8+65.5	8+63	#1045				6-19-16	
	113.29	108.14	5.15		8+39.5	8+37		#346				5-7-21
7					8+14.5	8+12	#856				7-18-22	
					7+88.5	7+86		#253				6-19-16
	112.91	108.04	4.87		6+97.5	6+95						
6					6+72.5	6+70		#104				2-25-14
					6+45		#92				3-22-16	
	112.89	107.94	4.95	6+67.5	6+42.5	6+40	#91	#654			3-22-16	12-2-13
5					6+18	6+15.5	#679	#379			12-10-10	7-8-13
					5+93	5+90.5						
	113.50	107.84	5.66		5+68	5+65.5	#617		2002-03716 #135	833 N. R. Carter	6-5-22	10-2-02 3-7-21
4					5+42.5	5+40						
					5+17.5	5+15						
	113.76	107.74	6.02		4+92.5	4+90	#769				10-19-17	
3					4+67.5	4+65						
					4+41.5	4+39		#569				5-26-22
	113.82	107.64	6.18	3+32	3+92.5	3+90	#1368	#5	820 Spaulding		11-13-19	1-6-11
2					3+67	3+64.5	#469	#767	821 Carter			11-17-60
					3+42.5	3+40					8-25-13	10-18-17
					3+10	3+07.5						
1					2+85	2+82.5	#150	#745			4-25-16	8-30-11
					2+60.5	2+58		#1296				10-16-10
	113.52	107.54	5.98		2+35.5	2+33	#218				3-25-21	
0					2+24.3		#462				7-31-18	
					2+10.5	2+08		#648				11-26-13
	112.44	107.44	5.00		1+85.5	1+83						
0					1+60.5	1+58	#1643				11-9-23	
					1+33.5	1+33						
					1+00.5		#176		804 Spaulding		3-11-20	
0					0+98			#683				5-7-23
					0+72.5	0+70.5						
		107.34		0+0	0+43.5	0+41	#519		802 Spaulding		5-8-29	