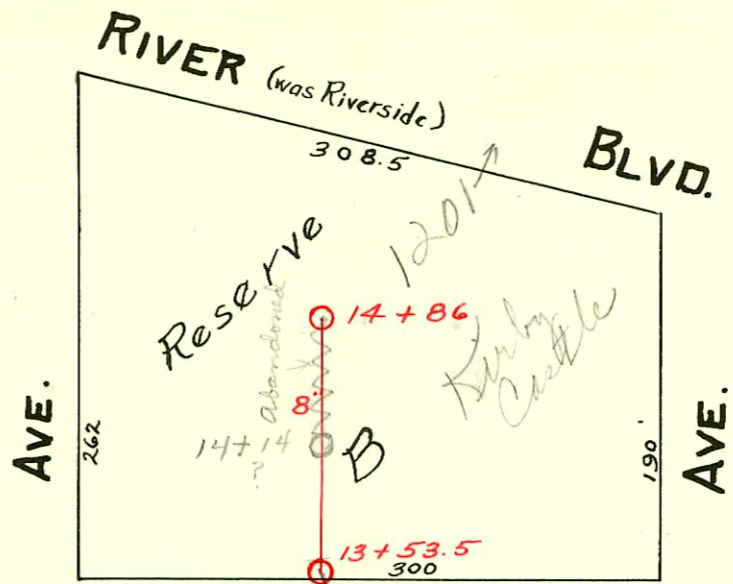


SEWER EASEMENT:

Made May 13, 1910, from Tipton Cox & wife: A strip of land 26' wide, 10' on either side of a line parallel with and 130' East of E. L. Faulkner Ave., from Harrison Ave to Riverside Ave.



HARRISON AVE.

25	96	140	120	12+84.6	95	25
956	94				93	
952	92				91	
	90				89	
150	88		11+71	(C.H.)	87	
	86				85	
	84				83	
948	82				81	
	80				79	
946	78		10+62	(C.H.)	77	
	76				75	
932	74				73	
	72				71	
928	70				69	
	68		9+30.3		67	
924	66				65	
	64				63	
918	62		8+39	(C.H.)	61	
	60				59	
910	58				57	
906	56				55	
	54				53	
	52		7+28	(C.H.)	51	
902	50				49	

Plot 8, p. 47
 Lot 10

FRANKLIN AVE.

25	48		6+22.2	47	851	25
960	46				45	
	44				43	
856	42				41	847
	40		5+18	(C.H.)	39	845
854	38				37	843
	36				35	841
852	34				33	
	32		4+20.5	(C.H.)	31	837
850	30				29	
832	28				27	831
	26				25	
830	24		3+16.5		23	825
	22				21	
824	20				19	817
	18				17	
822	16		2+14.3	(C.H.)	15	815
	14				13	
808	12				11	811
	10				9	809
806	8		1+16	(C.H.)	7	807
	6				5	
804	4				3	801
25	2	140	0+0	15	1	25

FAULKNER

BUFFUM

MURDOCK (was Andrews) AVE.



CONSTRUCTION RECORD						SERVICE RECORD						
STATION	ELEVATION		Depth	MANHOLE	4-INCH "Y" BRANCHES		No. of Permit		House Number		DATE OF PERMITS	
	Ground	Grade			North West	South East	North West	South East	North West	South East	North West	South East
	118.88	111.86	7.02	14+86								
					14+61	14+80.5						
					14+36.5	14+39						
14	118.26	111.56	6.70									
					14+08							
					13+88							
13	116.84	111.18	5.66	13+53.5	13+65	13+62.5						
				12+84.6	12+65							
					12+51.5	12+49						
					12+26.5	12+24	#151	#752	956	957	3-4-25	9-5-11
12	116.80	111.08	5.72		12+00.5		#703				12-21-10	
						11+98						
					11+77.5	11+75						
					11+51.3	11+49.1	#312	15048	950	953	6-9-13	11-13-85
11	116.98	110.98	6.00		11+25.5	11+23						
					11+03	11+00.5	#734	#208	948	945	8-24-11	3-27-11
					10+76.5	10+74		#694				12-16-10
					10+52.5	10+50	#663		936			12-9-13
					10+26	10+23.5	#430	#1369	932	939	8-2-13	11-13-19
10	116.41	110.88	5.53		10+00.5							
						9+98		#96		937		3-15-15
					9+75.5	9+73						
					9+49.5	9+47	#390	#844	924	923	8-26-12	4-16-19
9	116.63	110.78	5.85	9+30.3	9+24.5	9+22						
					8+99.5	8+97	#389	#860	920	921	8-26-12	4-22-19
					8+77.5	8+73	#288	#1322			5-14-17	10-25-19
					8+48.5	8+46	#287		914 R		5-14-17	
8	116.52	110.68	5.84		8+23.5	8+21		#860		921		4-22-19
					7+98.5	7+96	#158		908		3-30-17	
					7+74.5	7+72		#687		909		12-14-10
					7+49.5	7+47	#136		906		3-22-17	
7	116.54	110.58	5.96		7+23.5	7+21	#147	#764	902	903	3-26-17	10-18-17
					6+98	6+95.5						
6	117.74	110.43	7.31	6+22.2	6+07.5	6+05						
					5+83.5	5+81	#720	#679	856	850	1-29-19	8-3-21
					5+61.5	5+59	#621	#244	852	851	10-28-18	5-25-15
					5+36.5	5+34	#324		847		7-1-15	
5	117.43	110.13	7.30		5+10.5	5+08		#211			5-3-15	
					4+85.5	4+83	#729				9-24-20	
					4+62	4+59.5		#334		841		6-1-14
					4+35.5	4+33	#802		852		10-26-20	
4	116.96	109.83	7.13		4+11.5	4+09	#241	#240	850	851	10-10-11	4-27-14
					3+87.5	3+85	#341		850	851	10-10-11	
					3+61.5	3+59	#695	#542	852	853	12-17-10	9-14-14
					3+36.5	3+34						
3	116.94	109.53	7.41	3+16.5	3+10.5	3+08	#936		830		5-22-19	
					2+85	2+82.5						
					2+59.5	2+57	#1119		824		8-4-19	
					2+34.5	2+32		#874		817		11-13-11
2	116.96	109.23	7.73		2+09.5	2+07	#140		822		3-7-21	
					1+85	1+82.5		#235		815		5-17-15
					1+60.5	1+58		#383				9-18-16
					1+34.5	1+32	#26		808		1-26-21	
1	116.34	108.78	7.77		1+08.5	1+06	#108	#353	806	807	2-28-21	6-14-18
					0+83.5	0+81		#278		807		6-9-15
					0+58	0+55.5	#402		804		7-3-14	
0		108.63		0+00	0+33	0+30.5						

#1662 - Tap - 801 Buffum - 7-19-24
 #3286 - Tap - Rear 957 Buffum - 4-8-41 - Pray Plbg. Co.
 #1035 - Tap - 951 Buffum - 10-30-47 - Thompson Plbg. Co.
 B1618 - 1201 River Blvd - Koback Bldg - 7-7-64 - stub in M.H.
 B1619 - 1201 River Blvd - Koback Bldg - 7-7-64 - stub in M.H.