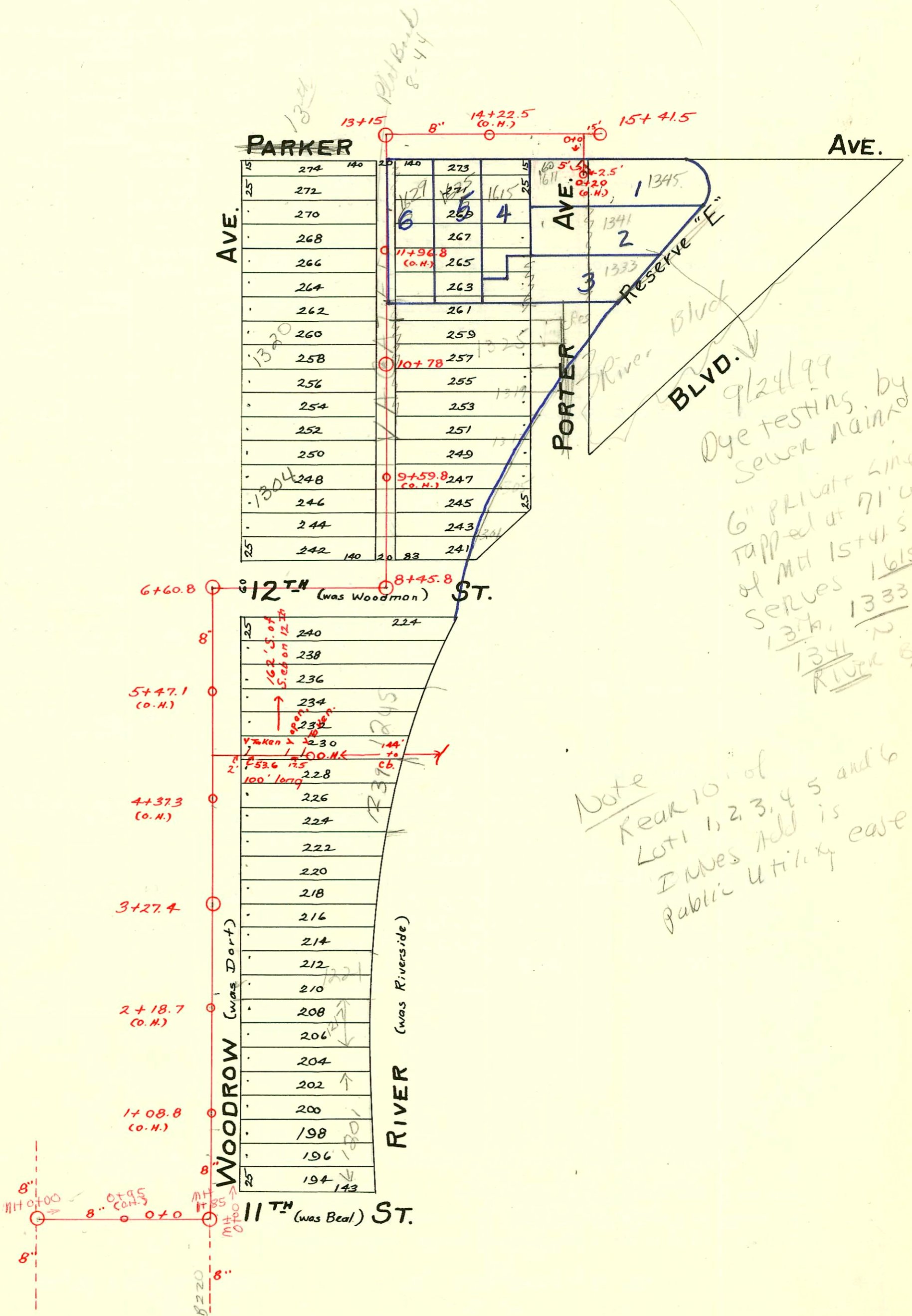


S.S. No. 15 - 1910
Dist. Y-S.S. No. 20 - 1920



9/24/99
Dye testing by
Sewer main
6" private line
tapped at 71' W.
of Mt 15+41.5
serves 1615 W
1341, 1333,
1341 N.
River Blvd

Note
Rear 10' of
lots 1, 2, 3, 4, 5 and 6
IMVes Add is
Public Utility case

CONSTRUCTION RECORD

SERVICE RECORD

STATION	ELEVATION		Depth	MANHOLE	4-INCH "Y" BRANCHES		No. of Permit		House Number		DATE OF PERMITS	
	Ground	Grade			North West	South East	North West	South East	North West	South East	North West	South East
	123.03	117.34	5.69	15+41.5								
15						15+34.5						
14+45.8	123.79	117.14	4.65			15+26.5		#111		1345 River Blvd.		2-23-27
14												
13+45.8	123.62	116.94	6.68									
13				13+15				#1247		1731 W. 13th 1340 Woodrow		8-22-23
12+45.8	122.03	116.74	5.29					#719				5-11-23
12												
						11+94.5	11+92					
						11+69.5	11+67		#1081			10-1-25
11+45.8	122.61	116.54	6.05			11+44.5	11+42	#503	#835	1625 Parker 1323 River Blvd.	6-10-21	4-26-38
11						11+18.5	11+16	#103	#1428 (repair)	1320 Woodrow 1325 Woodrow N River Blvd.		2-12-26
						10+92.5	10+91					7-10-67
				10+78		10+68.5	10+66	#970				6-3-19
10+45.8	122.96	116.34	6.62			10+40.4	10+38	#392				3-21-23
10						10+15.5	10+13	#1318				10-25-19
						9+90.5	9+88					
						9+64.5	9+62					
9+45.8	122.61	116.14	6.47			9+39.5	9+37	#44	#189	1304 Woodrow 1305 N. River Blvd.	1-24-20	3-18-29
9						9+14.5	9+12	#45				1-24-20
8+45.8	122.05	115.94	6.11			8+89.5	8+87					
8		115.74		8+45.8								
7		115.50										
				6+60.8								
6	122.15	115.26	6.89			6+15						
						5+90						
						5+65						
						5+40.5		#896				9-27-21
5	121.67	115.02	6.65			5+15						
						4+90		#640		1245 River Blvd.		6-15-28
						4+65						
						4+40		#54		1239 River Blvd.		2-12-30
4	121.45	114.78	6.67			4+15						
						3+90						
						3+66						
						3+40		#306		1233 River Blvd.		4-19-26
3	121.00	114.54	6.46	3+27.4		3+14.7						
						2+90		#1276				10-2-22
						2+64						
						2+49.4		#732-Top				6-26-22
						2+36.3		#943				10-7-21
2	120.29	114.29	6.00			2+12						
						1+86.4						
						1+64.2		#1149		1217 N River Blvd.		11-21-21
						1+39						
						1+14.5						
1	119.40	114.05	5.35			0+89						
						0+64.5						
						0+36.5		1999-00821 #392		1201 R. See below River Blvd.		9-30-99
0	119.30	113.81	5.49	0+0								4-20-25

1999-00821-9/30/99-1201 N River Blvd (APC-119) AET Henning-4" SCH 40, 1" WID CO, 1" V45, 6" CO, 2-6" 45 ELL, 1-6X4 WYE

99-00627 9-9-99 1615 W 13th - Reddi Rock

B 11384 1341 N. River Blvd 7-10-84 (Larger) Private Line

#419-1629 Parker-Top.
#294-Top-1601 River Blvd.-3-28-28
#736-Private line-1245 River Blvd.-7-11-28